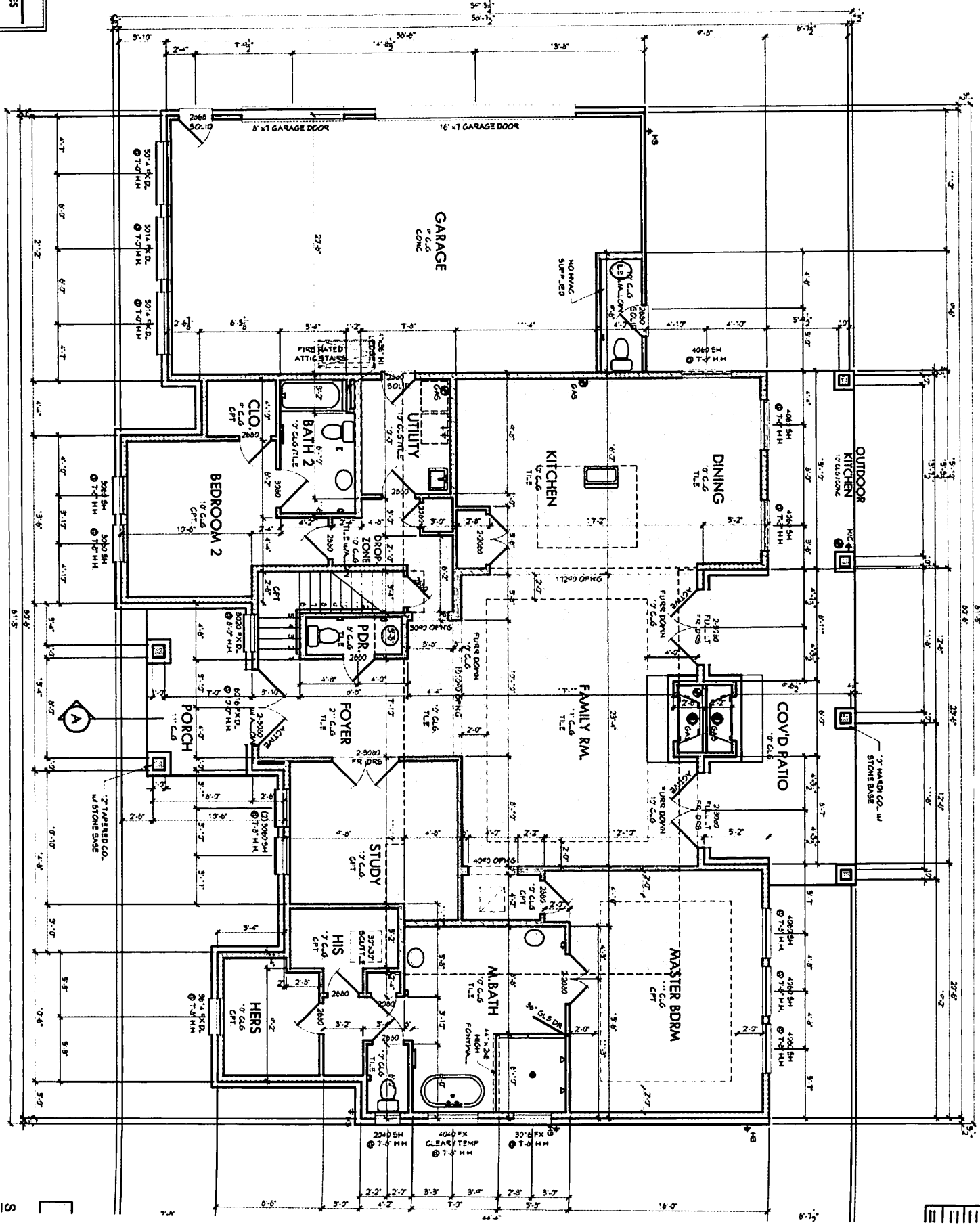
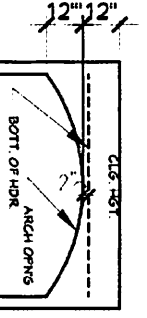


FINAL DRAWINGS
 APPROVED PERMITTED CHANGES
 HOME OWNERS

24'

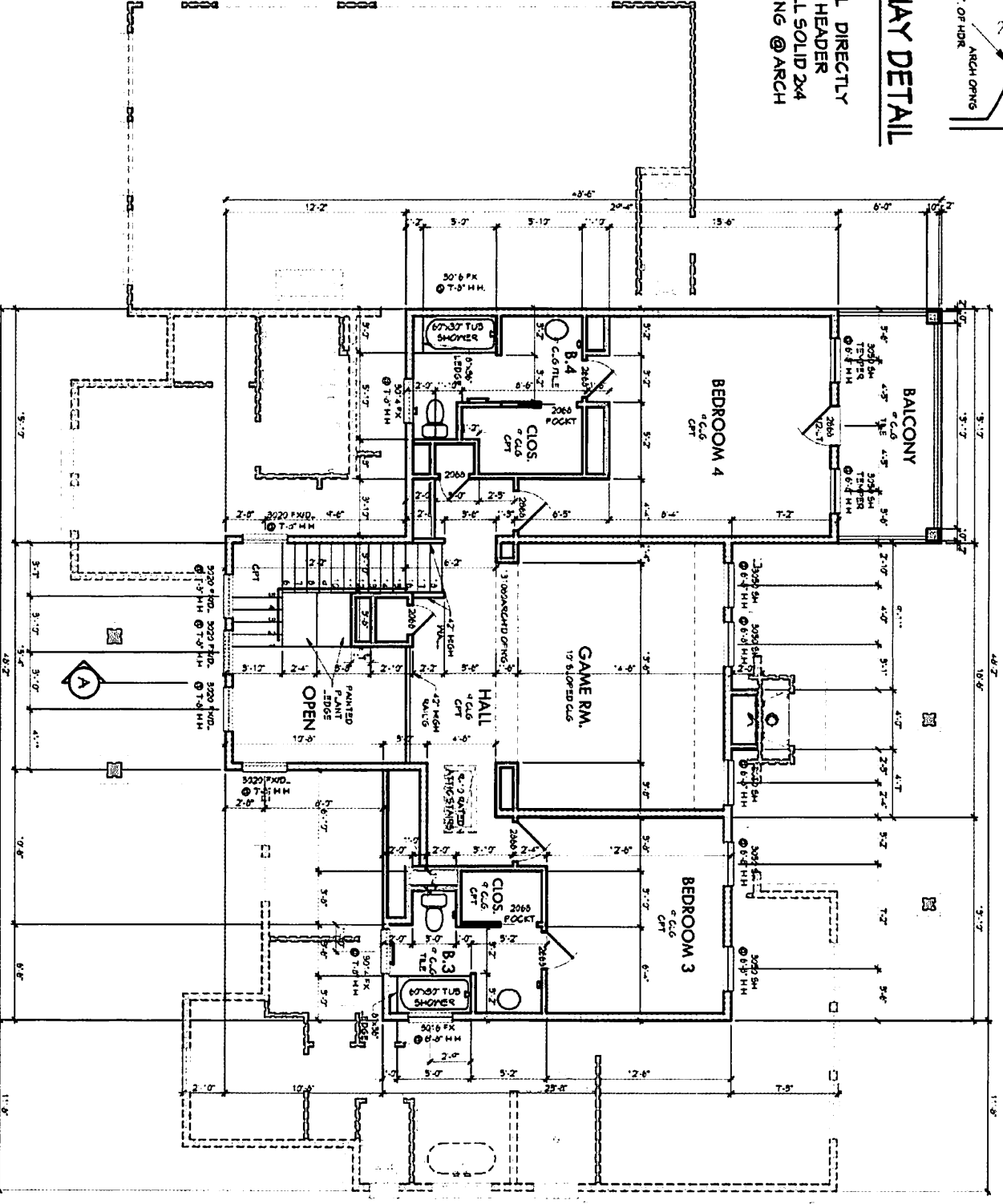




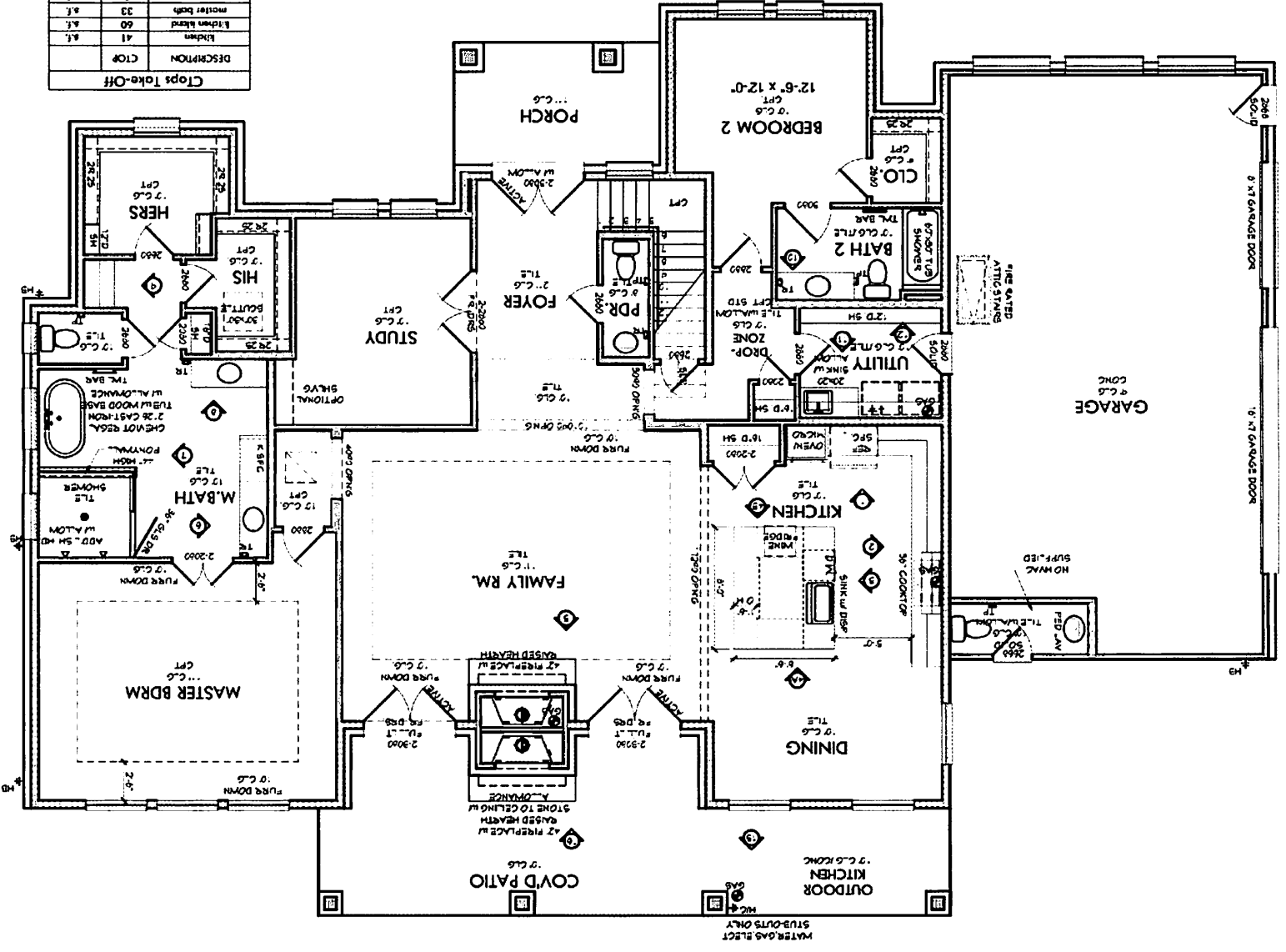
ARCHWAY DETAIL

NOTE:

1. INSTALL DIRECTLY UNDER HEADER
2. INSTALL SOLID 2x4 BLOCKING @ ARCH

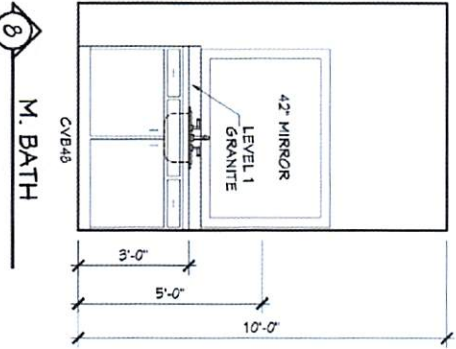
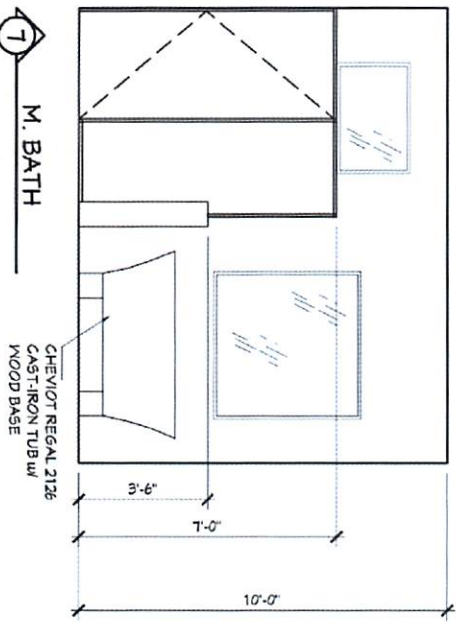
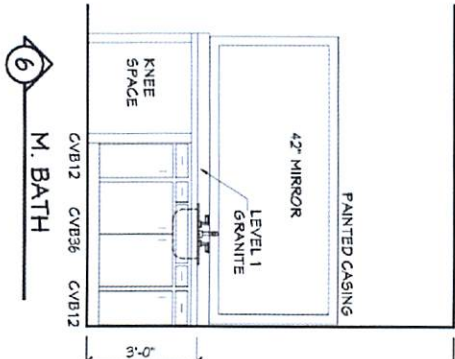
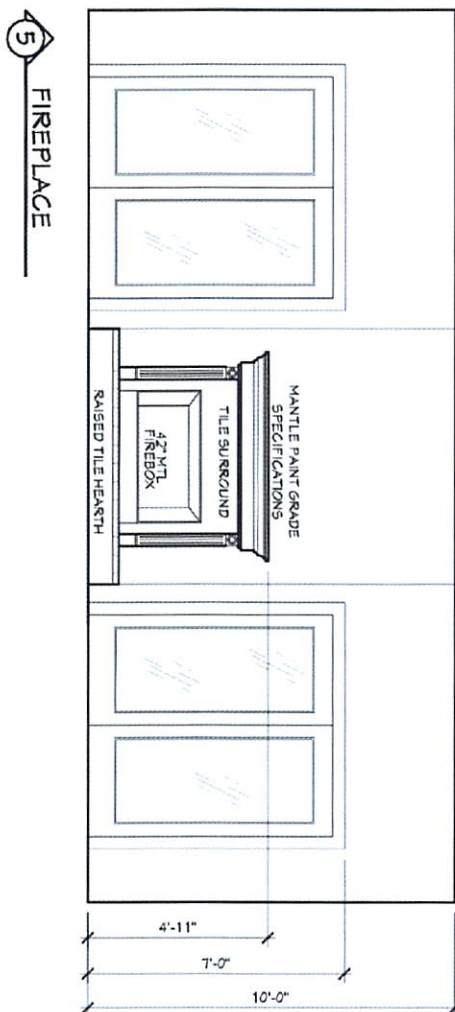
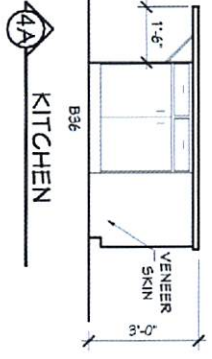
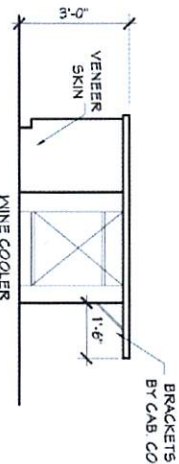
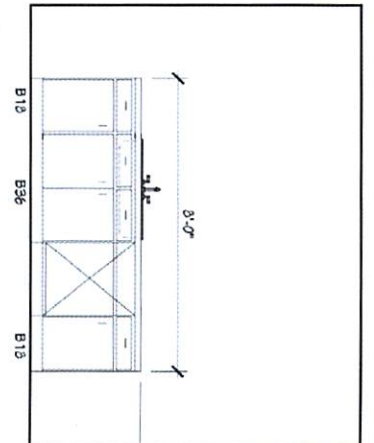
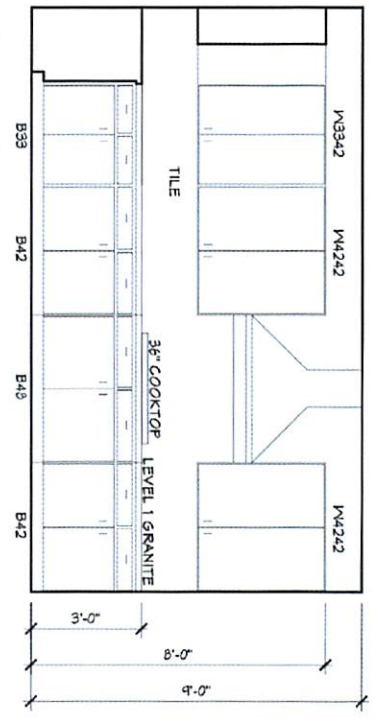
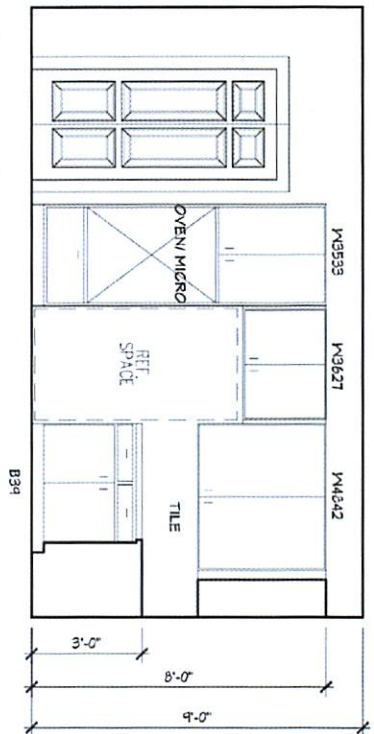


FINAL DRAWINGS
 APPROVED FOR NOTED CHANGES
 HOME OWNERS



Closets Take-Off

DESCRIPTION	CTOP	sq. ft.
Kidmen	41	sq. ft.
Kidmen Island	60	sq. ft.
master bath	33	sq. ft.
utility	9	sq. ft.
bath 2	13	sq. ft.
bath 3	12	sq. ft.
bath 4	15	sq. ft.
DOOR HARDWARE	34	
1st		
2nd	7	

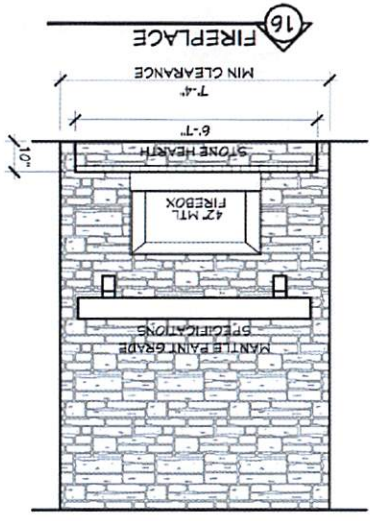


DEPENDENT ON GRANITE SELECTION, ISLAND MAY HAVE A SEAM

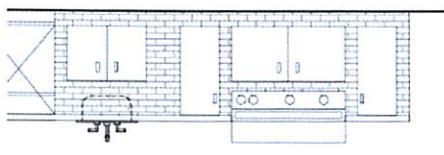
ALL CABINETS PROVIDED WITH ALLOWANCE FROM SUPPLEMENTAL

CABINET HARDWARE IS AN OPTION. HARDWARE SHOWN FOR PURPOSE OF DRAWER PULL AND DOOR SWING.

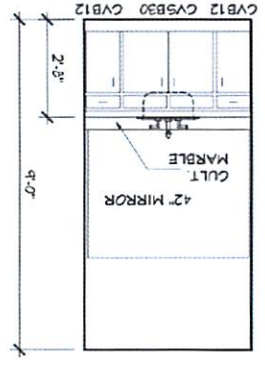
FINAL DRA
APPROVED PER INC
SSP
HOME OF



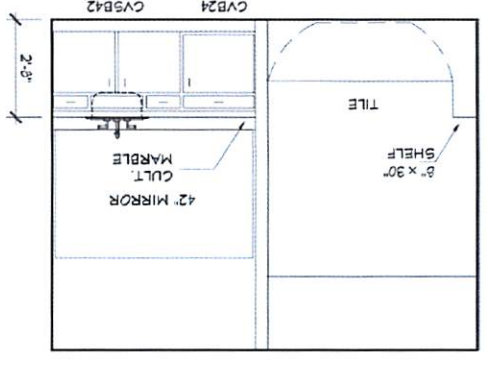
15 OUTDOOR KITCHEN (OPTIONAL)



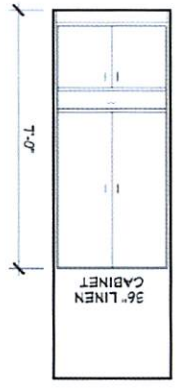
14 BATH 3



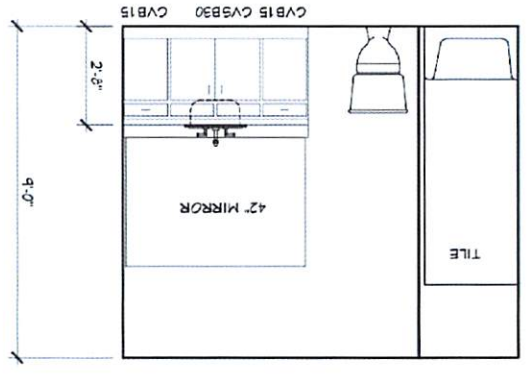
13 BATH 4



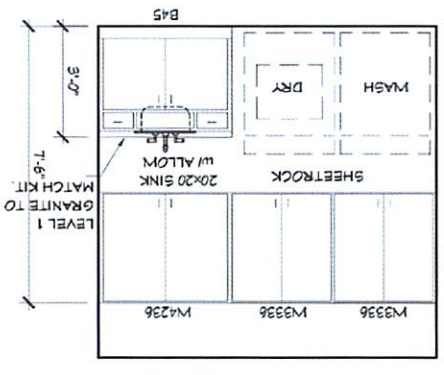
9 M. BATH



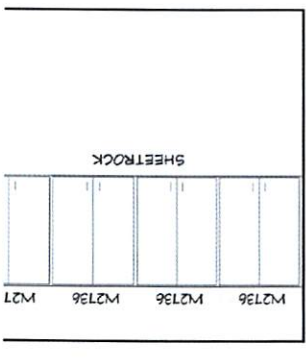
10 BATH 2



11 UTILITY



12 UTILITY



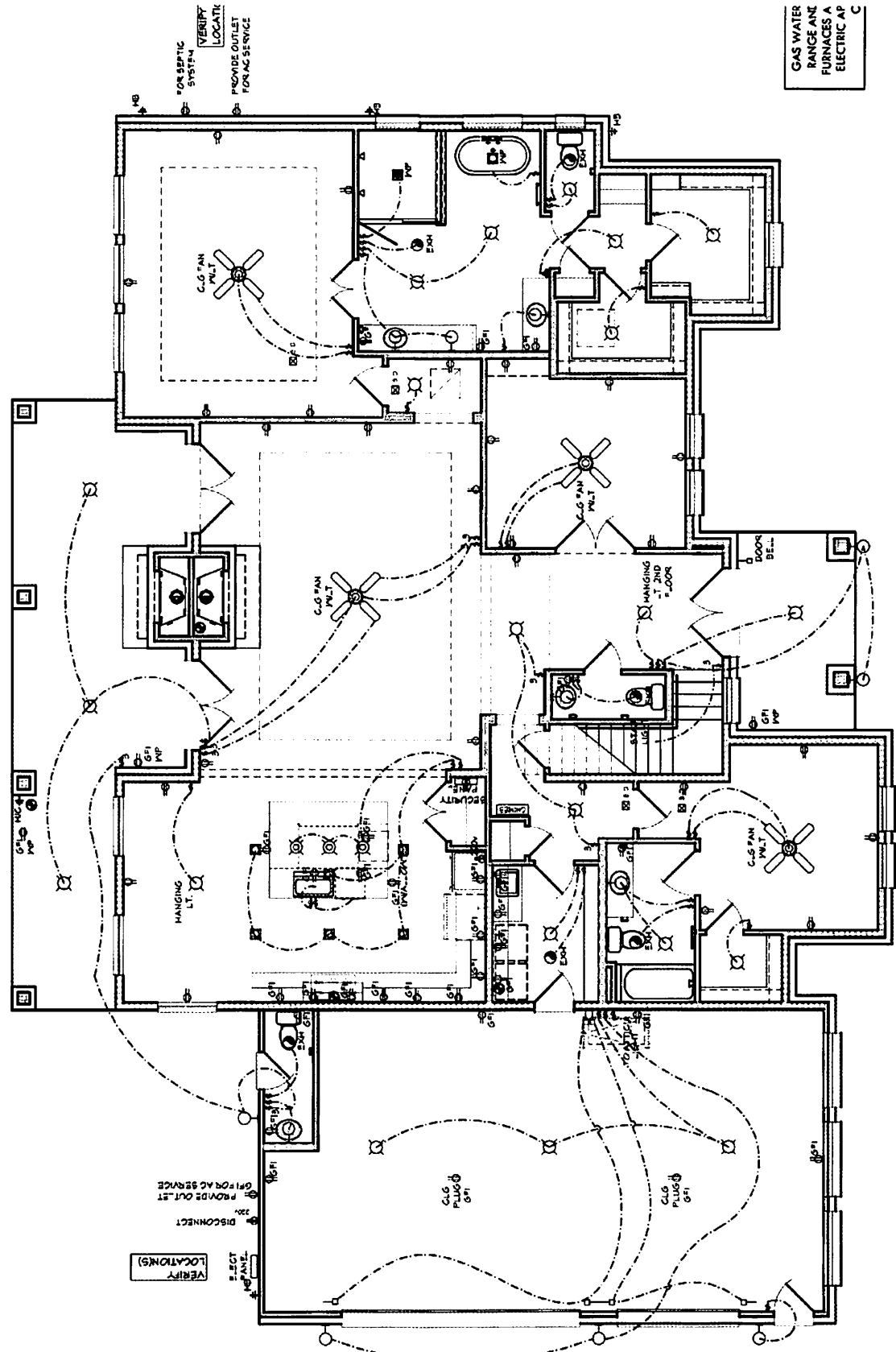
ELECTRICAL LEGEND

- SWITCH
- 3 POLE SWITCH
- 4 POLE SWITCH
- WALL MOUNTED
- 18" MOUNTED
- CEILING MOUNTED
- 18" MOUNTED
- SMOKE DETECTOR
- MINI RECESS CAN
- RECESS CAN
- DIRECTIONAL CANNON
- C-POLES
- CATS DATA LINE
- TELEPHONE JACK
- TELEVISION JACK
- DOOR BEL
- GAS
- EXHAUST FAN
- 1/2" ORE BB / WATER LINE
- CEILING FAN WITH LIGHT
- CEILING FAN
- 120V RECEPTACLE
- 220V RECEPTACLE
- GROUND FAULT INTERRUPTOR
- HEAT-SEEKING GROUND FAULT INTERRUPTOR
- SWITCH TOP POLE ONLY
- 1-REPOSITION
- FLUORESCENT LIGHT
- HOUSING CABINET - A-DJEN
- STEP 1 B.J.B
- EXTERIOR FLOOR LIGHT

BUILDER NOTE:
 (6) TV OUTLETS AND/OR PHONE OUTLETS WILL BE PROVIDED PER BUILDERS SPECIFICATIONS AND WILL LOCATED DURING FRAME STAGE PER OWNER/BUILDER.

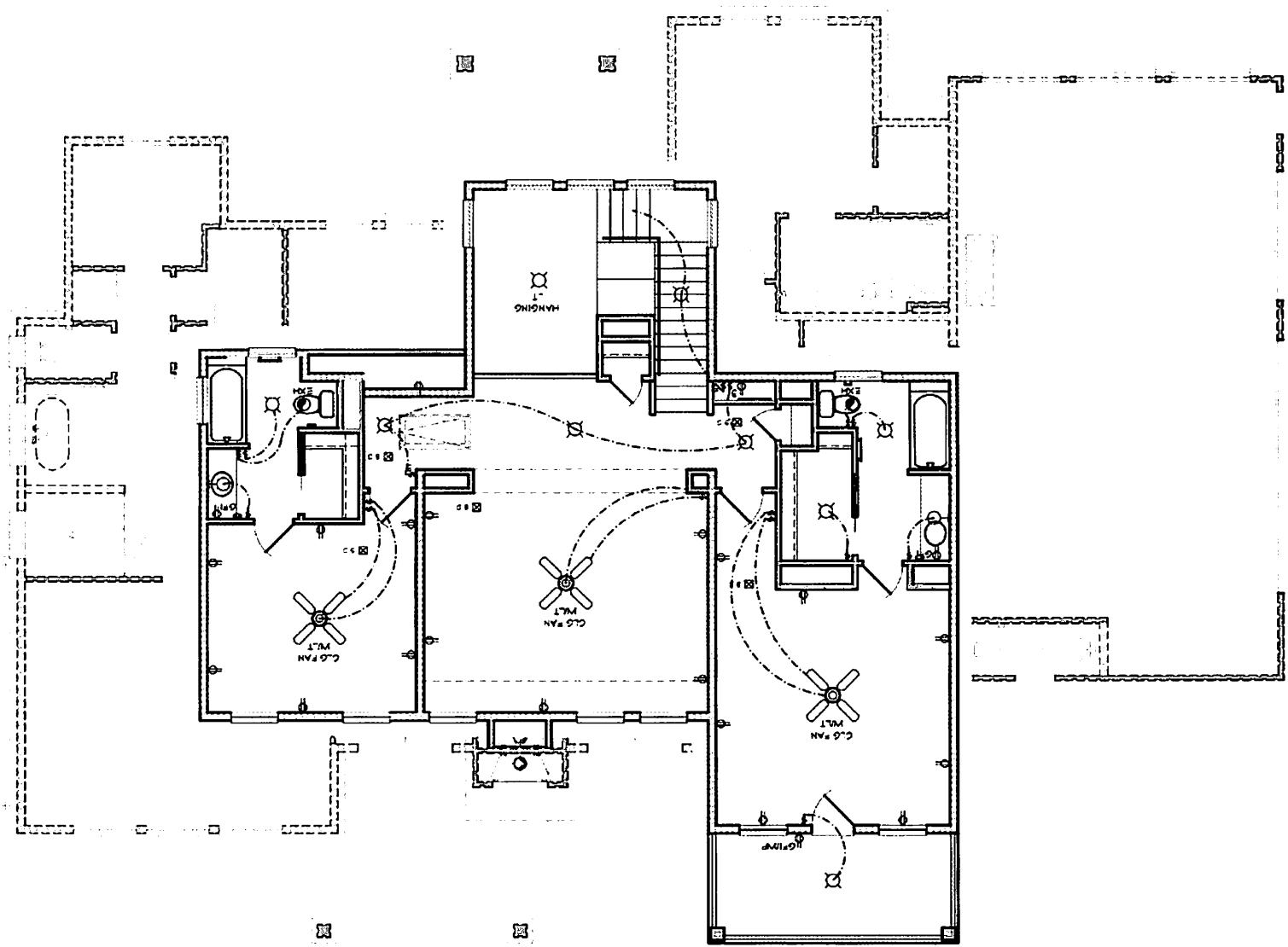
ALL SMOKE DEVICES SHALL BE HARD-WIRED, INTERCONNECTED AND HAVE A BATTERY BACK-UP PER LOCAL CODES

FINAL DRAWINGS
 APPROVED PER-ANGLED CHANGES

GAS WATER RANGE AND FURNACES A ELECTRIC AP

ALL LIGHTING PROVIDED WITH LIGHTING (WITH EXCEPT RECESSED LIGHT SMOKE

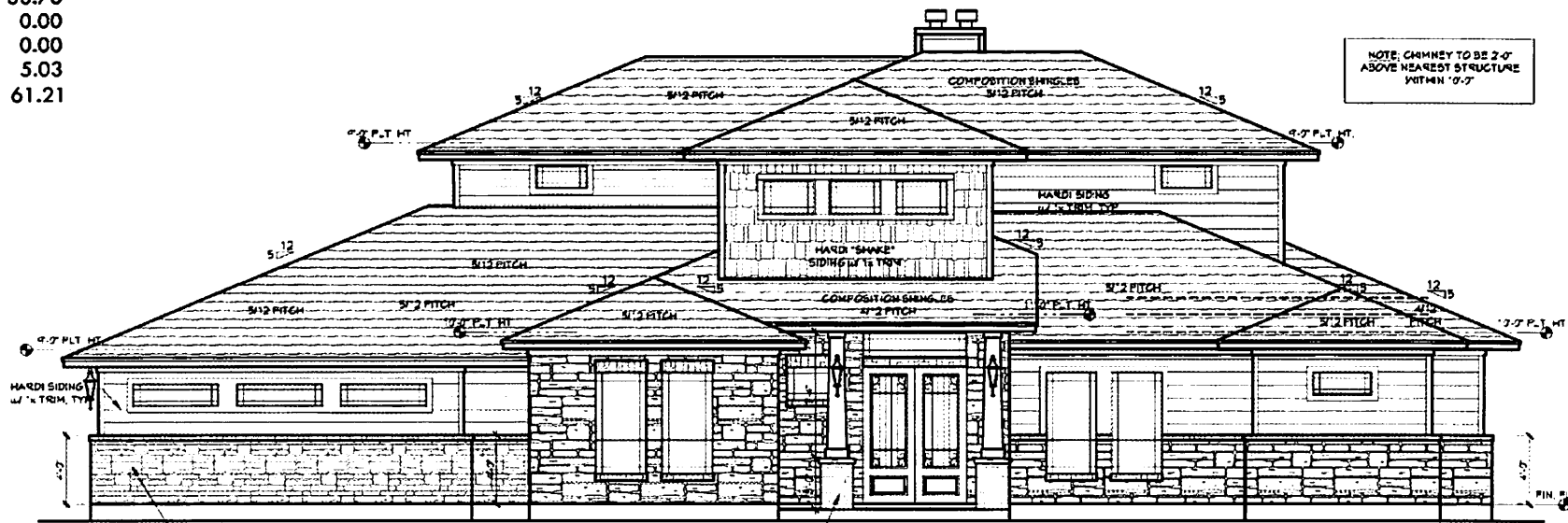


ELECTRICAL LEGEND

SWITCH	↕
3 POLE SWITCH	↕↕↕
4 POLE SWITCH	↕↕↕↕
WALL MOUNTED LIGHT FIXTURE	○
CEILING MOUNTED LIGHT FIXTURE	⊗
SHOCK DETECTOR	⊗
RECESS CAN	⊠
PRO RECESS CAN	⊠
DIRECTIONAL CAN (DB)	⊠
C-WPS	⊠
CATS DATA LINE	⊠
TELEPHONE JACK	⊠
TELEPHONE JACK	⊠
TELEVISION JACK	⊠
DOOR BEL.	⊠
GAS	⊠
EXHAUST FAN	⊠
HOSE BIB WATERLINE	⊠
CEL. NO. FAN	⊠
BATH LIGHT	⊠
CEILING FAN	⊠
120V RECEPTACLE	⊠
120V RECEPTACLE	⊠
220V RECEPTACLE	⊠
600V FAULT INTERRUPTOR	⊠
WEATHER PROOF 600V FAULT INTERRUPTOR	⊠
600V FAULT INTERRUPTOR	⊠
SWITCH TOP POLE ONLY	⊠
F-EMPSTAT	⊠
FLO. PRESENT LIGHT PANEL	⊠
INTEGRATED CABINET - A. LOZEN STEP 1 BULB	⊠
EXTERIOR FLOOD LIGHT	⊠

exterior finish

total exterior	3323	cov'd pct
brick	0	0.00
stone	1122	33.76
stucco	0	0.00
v.siding	0	0.00
shake	167	5.03
siding	2034	61.21
fireplace	117	
(optional stone)		

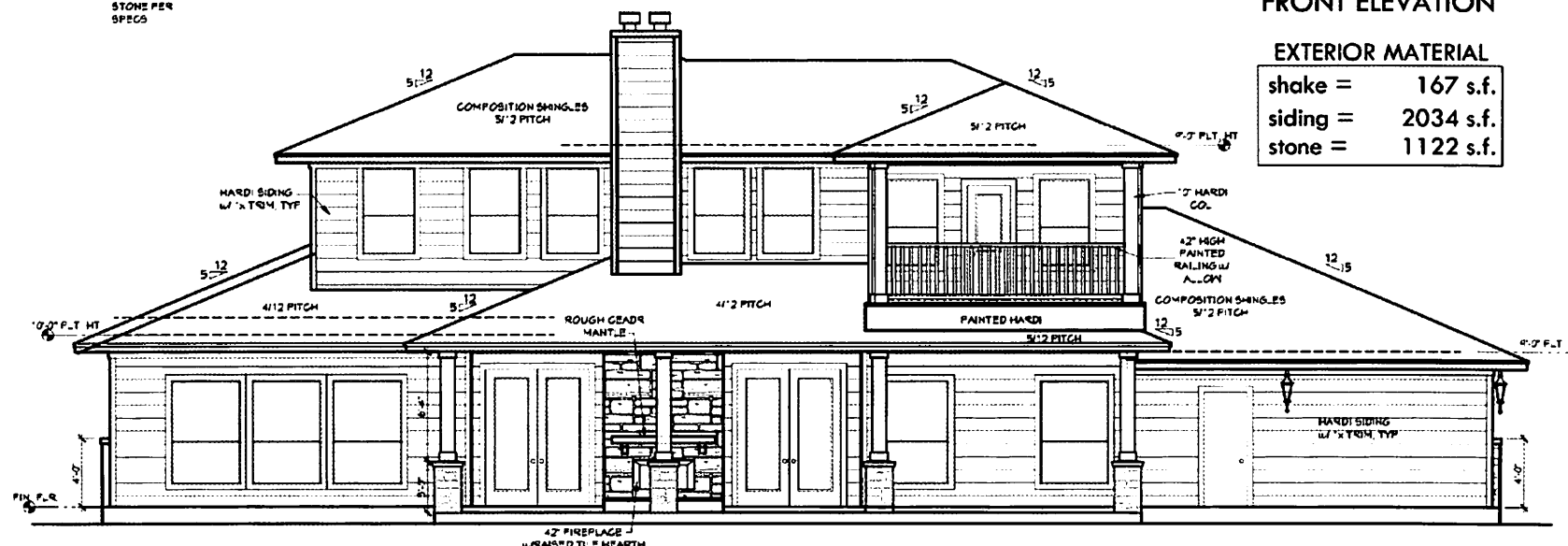


NOTE: CHIMNEY TO BE 2'-0\"/>

FRONT ELEVATION

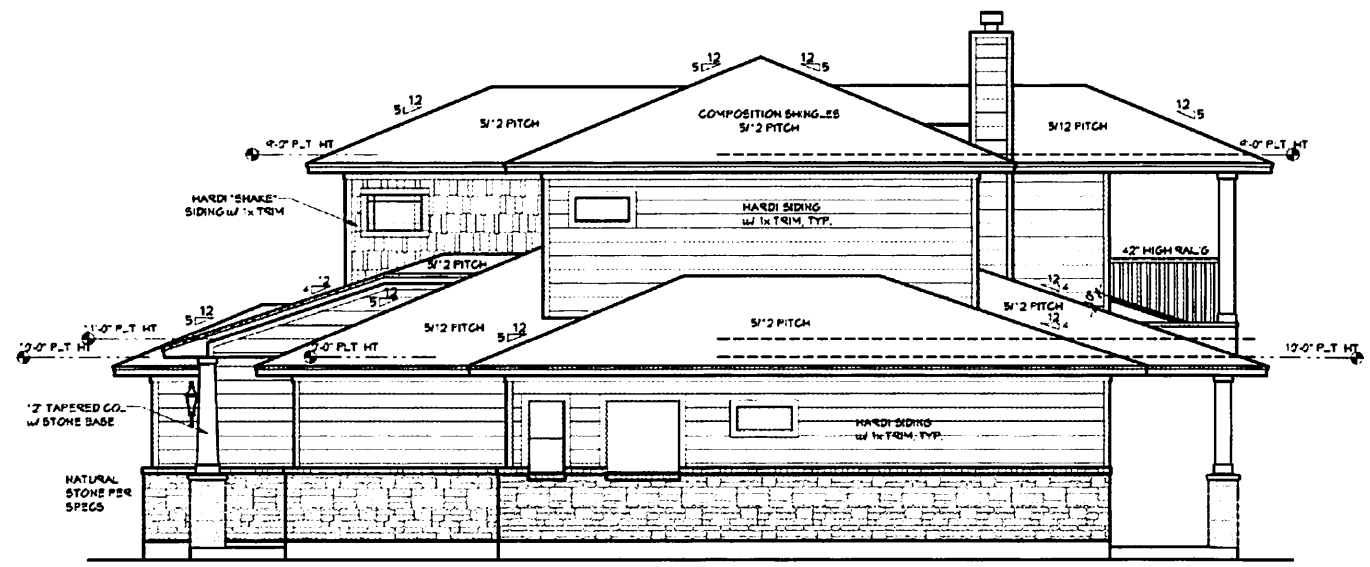
EXTERIOR MATERIAL

shake =	167 s.f.
siding =	2034 s.f.
stone =	1122 s.f.

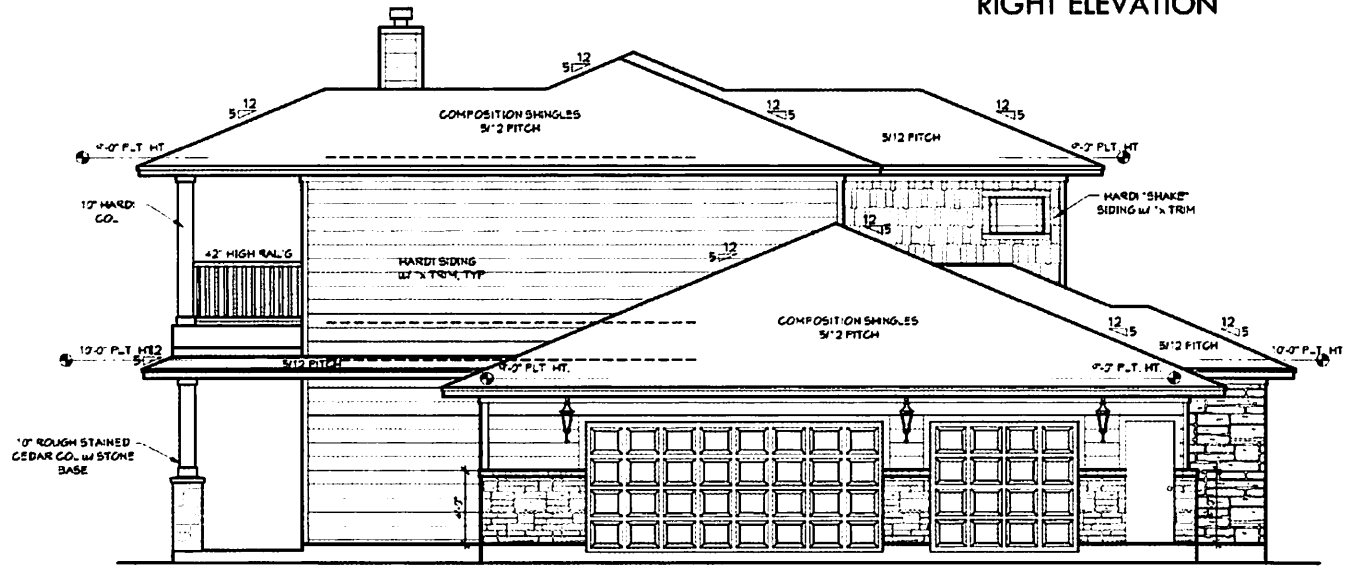


REAR ELEVATION


FINAL DRAWINGS
 APPROVED PER NOTED CHANGES
 HOME OWNER



RIGHT ELEVATION



LEFT ELEVATION

FINAL DRAWINGS
APPROVED PER NOTED CHANGES

HOMEOWNER

