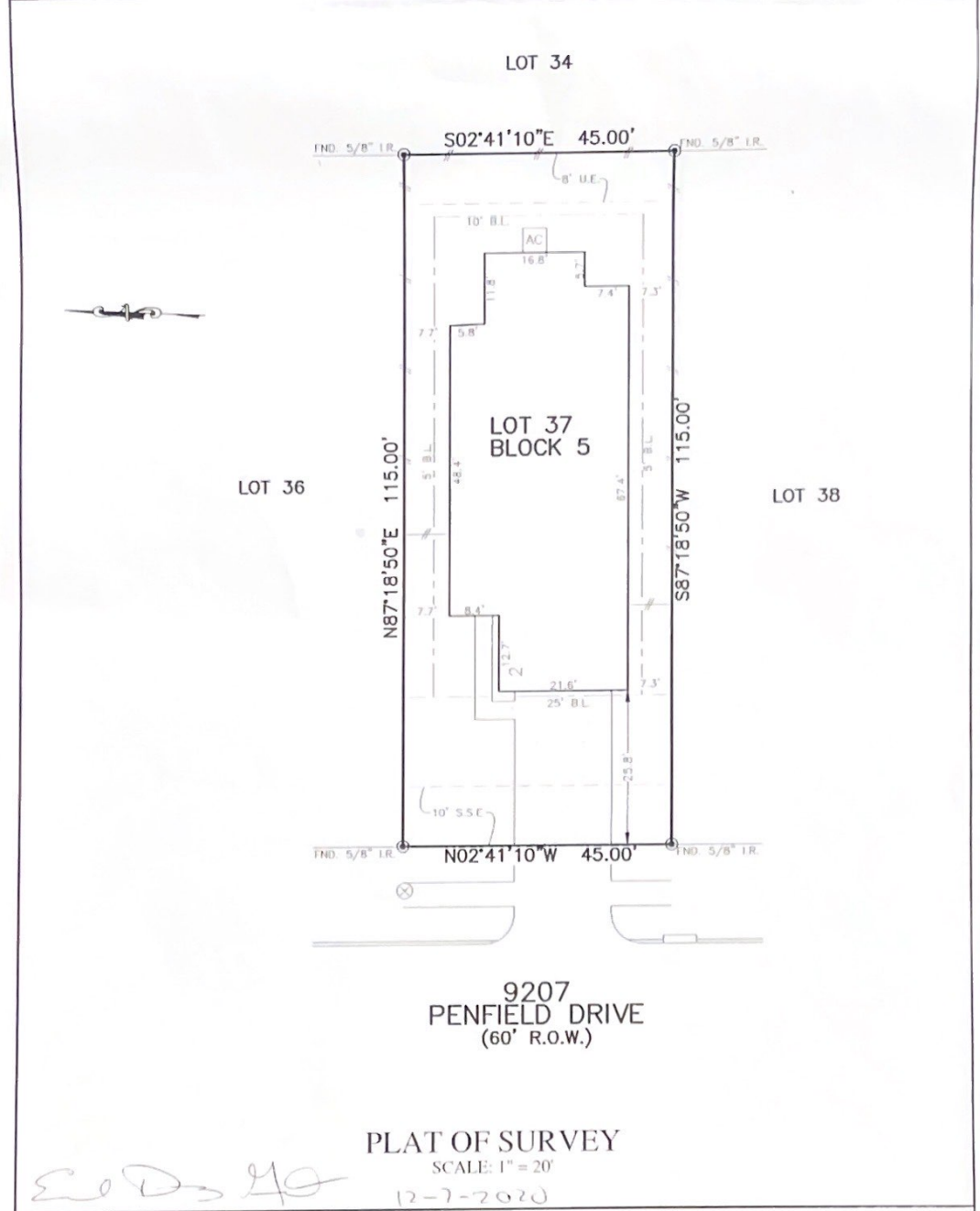


	PLATWORK FRONT Y LINE BUILDING LINE EASEMENT WOODEN FENCE WROUGHT IRON FENCE CHAIN LINK FENCE OVERHEAD ELECTRIC	B.L. BUILDING LINE P.L. FRONT LOAD BERE BUILDING LINE B.L. V.I. VEHICLE BUILDING LINE B.L. V.C. VEHICLE BUILDING LINE C.B.L. CURB BUILDING LINE B.O.W. BOUNDARY OF WAY F.T. FINISHED FLOOR EXT. EXTENDED PROP. PROPOSED ELEV. ELEVATION	LOT. LOT OR PART U.L.E. UTILITY EASEMENT S.W.E. SANITARY SEWER EASEMENT P.A.E. PRIVATE ACCESS EASEMENT P.U. PRIVATE UTILITY EASEMENT FND. FOUND I.P. IRON PIPE W.A.V.E. WATER LINE EASEMENT S.W.E. SANITARY SEWER EASEMENT P.A.E. PRIVATE ACCESS EASEMENT P.U. PRIVATE UTILITY EASEMENT FND. FOUND I.P. IRON PIPE	U.V. UNDERGROUND UTILITY EASEMENT M.A.E. MAINTENANCE & ACCESS EASEMENT A.E. ACCESS EASEMENT A.F.E. AERIAL EASEMENT D.F.E. DRAINAGE EASEMENT F.E. FENCE EASEMENT W.V. WATER VALVE F.W.P. FIRE WATER PUMP W.A.R. WATER ARRESTOR GUY ANCHOR MANDIBLE 8 INCH 12 INCH 18 INCH 24 INCH 30 INCH 36 INCH 42 INCH 48 INCH 54 INCH 60 INCH 66 INCH 72 INCH 78 INCH 84 INCH 90 INCH 96 INCH 102 INCH 108 INCH 114 INCH 120 INCH 126 INCH 132 INCH 138 INCH 144 INCH 150 INCH	RANDOM E. CHAIRMAN PADLOCKED UNLOCKED TELEPHONE TOWER GAS METER FURNACE WATER ARRESTOR GUY ANCHOR 8 INCH 12 INCH 18 INCH 24 INCH 30 INCH 36 INCH 42 INCH 48 INCH 54 INCH 60 INCH 66 INCH 72 INCH 78 INCH 84 INCH 90 INCH 96 INCH 102 INCH 108 INCH 114 INCH 120 INCH 126 INCH 132 INCH 138 INCH 144 INCH 150 INCH
--	--	--	---	--	--



NOTES:
 1. ALL BEARINGS SHOWN HEREON ARE BASED ON THE RECORDED PLAT.
 2. ALLPOINTS LAND SURVEY, INC. IS NOT LIABLE FOR ANY DAMAGES DUE TO INFORMATION NOT PROVIDED TO SURVEYOR OR BUILDER PLACING ANY IMPROVEMENTS WITHIN A BUILDING LINE OR EASEMENT.
 3. SUBJECT TO APPLICABLE RESTRICTIVE COVENANTS LISTED IN ITEM 1, SCHEDULE "B" OF DEED COMMITMENT ISSUED BY OLD REPUBLIC NATIONAL TITLE INSURANCE Co. UNDER O.F. No. 20009154.

FOR EMMANUEL A DOMINGUEZ GO/AY ADDRESS: 9207 PENFIELD DRIVE ALLPOINTS JOB#: CO206137 BY: HK G.F. 20009154 JOB	LOT 37, BLOCK 5, STERLING LAKES AT IOWA COLONY, SECTION 13, C.F. No. 2019001428, MAP RECORDS, BRAZORIA COUNTY, TEXAS	
FLOOD ZONE: X COMMUNITY PANEL: 48039C0105H EFFECTIVE DATE: 6/5/1989 LOMR: DATE	I HEREBY CERTIFY THAT THIS PLAT REPRESENTS THE RESULTS OF A SURVEY MADE ON THE GROUND ON THE 23RD DAY OF NOVEMBER, 2020 	

ALLPOINTS LAND SURVEY, INC. - 1515 WITTE ROAD - HOUSTON, TEXAS 77080 - PHONE: 713-468-7707 - T B P E L S # 10122600