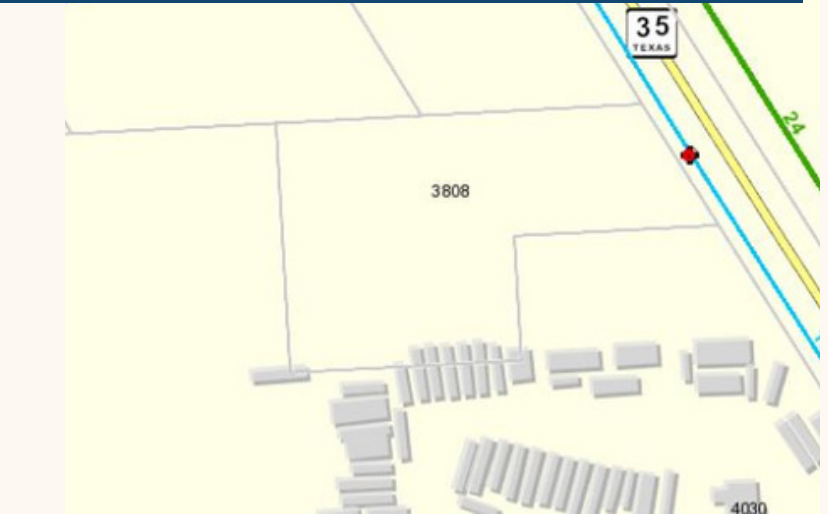
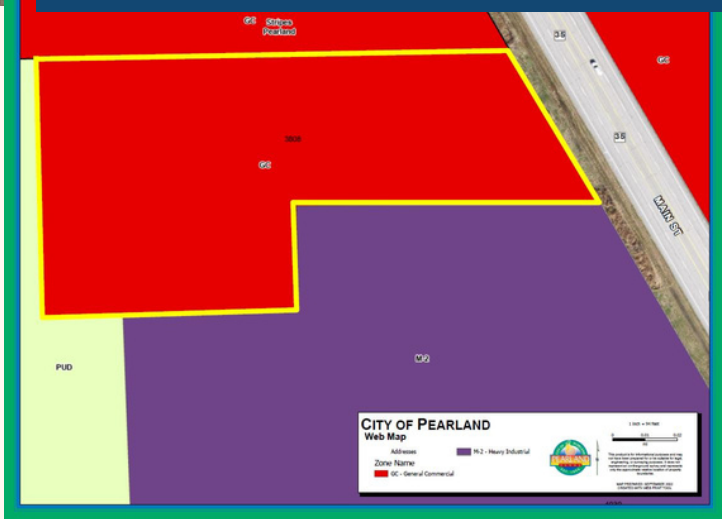


OFFERED AT  
\$910,000



3808 Main Street, Pearland, TX 77581



## ABOUT THE PROPERTY

ZONED GENERAL COMMERCIAL USE.

3.61 acres of cleared land in the heart of Pearland with frontage on Highway 35/Main St. The land is ready to develop with city utilities available in this rapidly developing area near Pearlman High School. See attached maps. Easy access to Telephone Road, I-45, Beltway 8 and SH 288. Great property for a retail center and/or fast food location. Located minutes from downtown Houston, Pasadena and Galveston. For questions call Mona Malone at 832-647-4340 or [mona@christybuckteam.com](mailto:mona@christybuckteam.com).

Infinity  
Real Estate Group  
Creating endless opportunities

MONA MALONE



[mona@christybuckteam.com](mailto:mona@christybuckteam.com)



832-647-4340