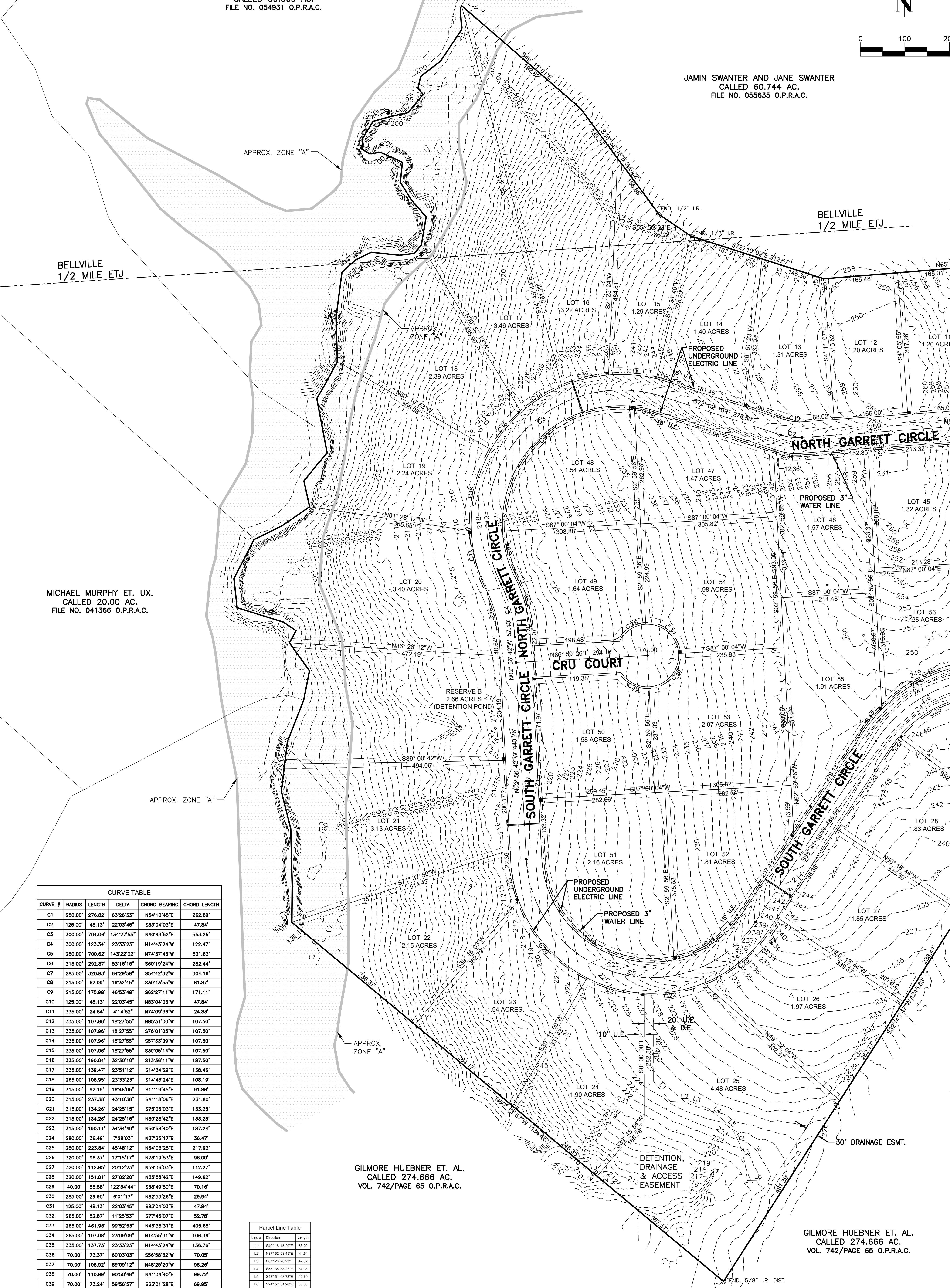
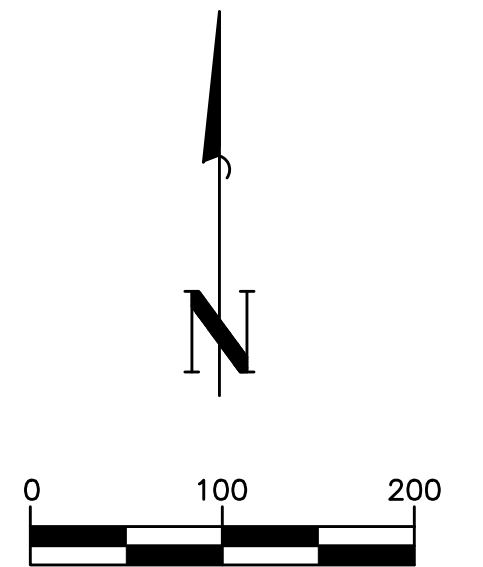


KENDALL MORELAND ET. UX.
CALLED 59.069 AC.
FILE NO. 054931 O.P.R.A.C.

JAMIN SWANTER AND JANE SWANTER
CALLED 60.744 AC.
FILE NO. 055635 O.P.R.A.C.



MICHAEL MURPHY ET. UX.
CALLED 20.00 AC.
FILE NO. 041366 O.P.R.A.C.

GILMORE HUEBNER ET. AL.
CALLED 274.666 AC.
VOL. 742/PAGE 65 O.P.R.A.C.

GILMORE HUEBNER ET. AL.
CALLED 274.666 AC.
VOL. 742/PAGE 65 O.P.R.A.C.

CURVE #	RADIUS	LENGTH	DELTA	CHORD BEARING	CHORD LENGTH
C1	250.00'	276.82'	63°28'33"	N54°10'48"E	262.89'
C2	125.00'	48.13'	22°03'45"	S83°04'03"E	47.84'
C3	300.00'	704.06'	134°27'55"	N40°43'52"E	553.25'
C4	300.00'	123.34'	23°33'23"	N14°43'24"W	122.47'
C5	280.00'	700.62'	143°22'02"	N74°37'43"W	531.63'
C6	315.00'	292.87'	53°16'15"	S60°19'24"W	282.44'
C7	285.00'	320.83'	64°29'59"	S54°42'32"W	304.16'
C8	215.00'	62.09'	16°32'45"	S30°43'55"W	61.87'
C9	215.00'	175.98'	46°53'48"	S62°27'11"W	171.11'
C10	125.00'	48.13'	22°03'45"	N83°04'03"W	47.84'
C11	335.00'	24.84'	4°14'52"	N74°09'36"W	24.83'
C12	335.00'	107.96'	18°27'55"	N85°31'00"W	107.50'
C13	335.00'	107.96'	18°27'55"	S76°01'05"W	107.50'
C14	335.00'	107.96'	18°27'55"	S87°33'09"W	107.50'
C15	335.00'	107.96'	18°27'55"	S39°05'14"W	107.50'
C16	335.00'	190.04'	32°30'10"	S13°36'11"W	187.50'
C17	335.00'	139.47'	23°51'12"	S14°34'29"E	138.46'
C18	285.00'	108.95'	23°33'23"	S14°43'24"E	108.19'
C19	315.00'	92.19'	16°46'05"	S11°19'45"E	91.86'
C20	315.00'	237.38'	43°10'38"	S41°18'06"E	231.80'
C21	315.00'	134.26'	24°25'15"	S75°06'03"E	133.25'
C22	315.00'	134.26'	24°25'15"	N80°28'42"E	133.25'
C23	315.00'	190.11'	34°34'49"	N50°58'40"E	187.24'
C24	280.00'	36.49'	7°28'03"	N37°25'17"E	36.47'
C25	280.00'	223.84'	45°48'12"	N64°03'25"E	217.92'
C26	320.00'	96.37'	17°15'17"	N78°19'53"E	96.00'
C27	320.00'	112.85'	20°12'23"	N59°36'03"E	112.27'
C28	320.00'	151.01'	27°02'20"	N35°58'42"E	149.62'
C29	40.00'	85.58'	122°34'44"	S38°49'50"E	70.16'
C30	285.00'	29.85'	6°01'17"	N82°53'26"E	29.94'
C31	125.00'	48.13'	22°03'45"	S83°04'03"E	47.84'
C32	285.00'	52.87'	11°25'53"	S77°45'07"E	52.78'
C33	285.00'	461.96'	99°52'53"	N46°35'31"E	405.65'
C34	285.00'	107.08'	23°09'09"	N14°55'31"W	106.36'
C35	335.00'	137.73'	23°33'23"	N14°43'24"W	136.76'
C36	70.00'	73.37'	6°03'03"	S56°58'32"W	70.05'
C37	70.00'	108.92'	89°09'12"	N48°25'20"W	98.26'
C38	70.00'	110.99'	90°50'48"	N41°34'40"E	99.72'
C39	70.00'	73.24'	59°56'57"	S63°01'28"E	69.95'
C40	245.00'	422.99'	98°55'12"	N52°24'18"W	372.38'
C41	245.00'	190.06'	44°28'50"	S55°54'41"W	185.33'
C42	350.00'	66.74'	10°55'30"	S39°09'01"W	66.64'
C43	350.00'	236.25'	38°40'27"	S63°57'00"W	231.79'
C44	350.00'	22.43'	3°40'18"	S85°07'22"W	22.43'
C45	250.00'	108.76'	24°55'37"	S74°29'42"W	107.91'
C46	250.00'	172.67'	39°34'22"	S42°14'43"W	169.26'
C47	265.00'	74.77'	16°10'01"	S14°22'32"W	74.53'
C48	332.50'	93.82'	16°10'01"	S14°22'32"W	93.51'

Line #	Direction	Length
L1	S40°18'15.20"E	58.29
L2	N87°52'03.49"E	41.51
L3	S67°29'28.23"E	47.82
L4	S53°39'38.27"E	34.08
L5	S43°51'08.72"E	40.79
L6	S24°52'51.26"E	33.08
L7	S15°39'17.34"E	42.16
L8	S88°21'21.91"E	55.34

MATCHLINE
SEE SHEET 1



1906 NEIBUHR BRENHAM, TEXAS
(979) 836-7937 FAX (979) 836-7936