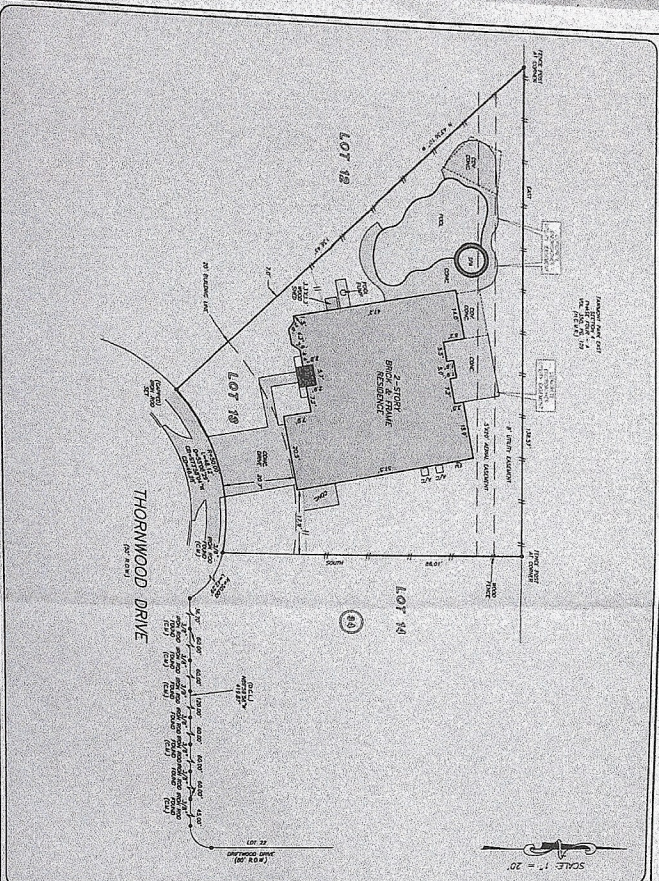




shewart  
SURVEYING & TITLE WORK  
10101 W. 48th Street  
Midvale, UT 84046



PRECISION  
SURVEYS



**NOTICE TO CONTRACTORS:**  
THESE PLATS SHOW THE LOCATION OF ALL UTILITIES AS SHOWN ON THE PLATS. CONTRACTORS ARE RESPONSIBLE FOR VERIFYING THE LOCATION AND DEPTH OF ALL UTILITIES PRIOR TO CONSTRUCTION. THE SURVEYOR DOES NOT WARRANT THE ACCURACY OF THE LOCATION OR DEPTH OF UTILITIES SHOWN ON THESE PLATS.

**NOTICE TO BUYERS:**  
THESE PLATS SHOW THE LOCATION OF ALL UTILITIES AS SHOWN ON THE PLATS. BUYERS ARE RESPONSIBLE FOR VERIFYING THE LOCATION AND DEPTH OF ALL UTILITIES PRIOR TO CONSTRUCTION. THE SURVEYOR DOES NOT WARRANT THE ACCURACY OF THE LOCATION OR DEPTH OF UTILITIES SHOWN ON THESE PLATS.

**NOTICE TO ADJACENT PROPERTY OWNERS:**  
THESE PLATS SHOW THE LOCATION OF ALL UTILITIES AS SHOWN ON THE PLATS. ADJACENT PROPERTY OWNERS ARE RESPONSIBLE FOR VERIFYING THE LOCATION AND DEPTH OF ALL UTILITIES PRIOR TO CONSTRUCTION. THE SURVEYOR DOES NOT WARRANT THE ACCURACY OF THE LOCATION OR DEPTH OF UTILITIES SHOWN ON THESE PLATS.



**LOT 13, BLOCK 34  
FARMINGTON PARK EAST, SECTION 4,  
PHASE 4-C**

APPROVED TO THE MAP BY THE TARRANT COUNTY CLERK'S OFFICE ON 05/28/2022.

**10101 W. 48th Street  
Midvale, UT 84046**

