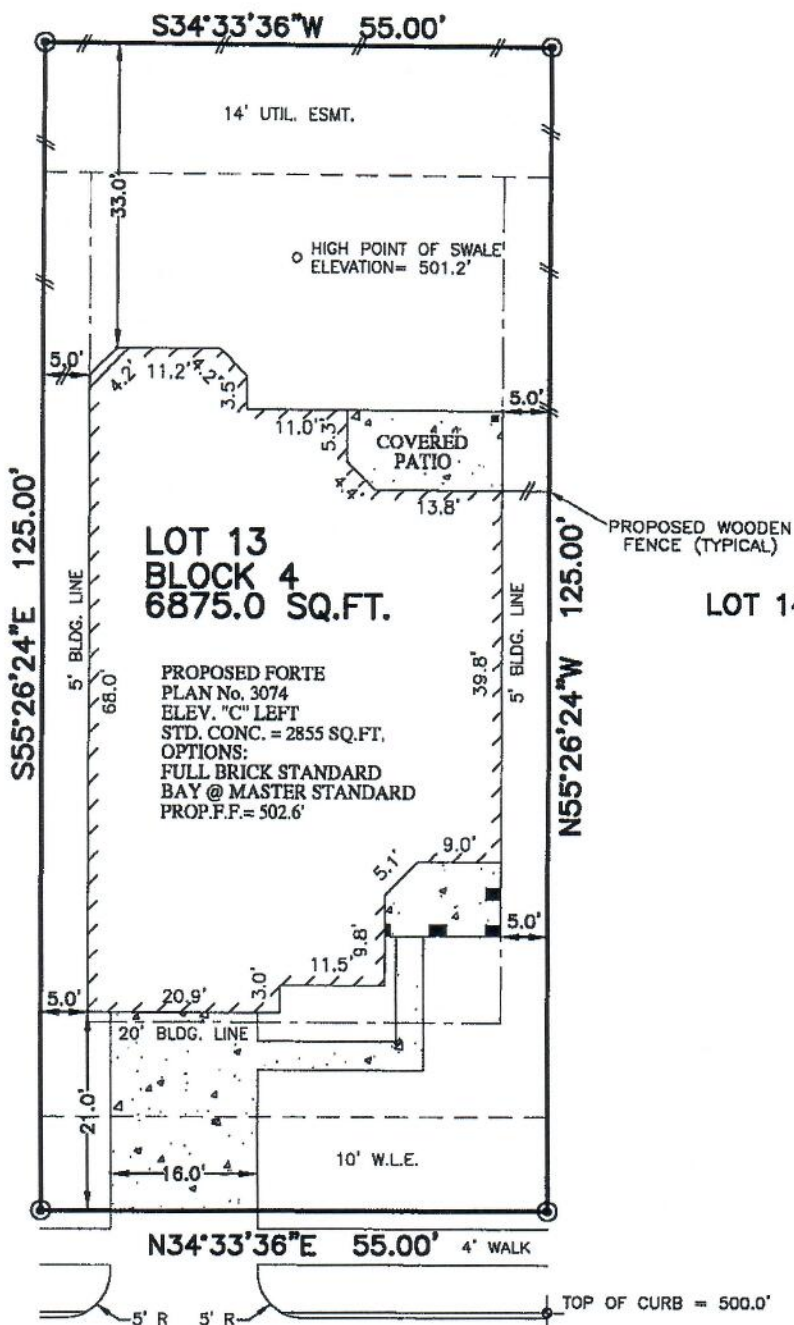


OPEN SPACE

LOT 12

LOT 14



**20318 WINDSOR FIELD
(50' R.O.W.)
28' CONCRETE PAVEMENT**

APPROX. LOT COVERAGE: 41.53%

FRONT SOD:	195 SQ. YD.
BACK SOD:	233 SQ. YD.
APPROX. SQ. FT. OF FLATWORK:	
4" PAVING:	581 SQ. FT.
INTURN	196 SQ. FT.
A/C PAD:	16 SQ. FT.
FENCE:	LINEAR FT.
BACK:	55 FT.
LEFT:	36 FT.
RIGHT:	48 FT.
FRONT LT.	5 FT.
FRONT RT.	5 FT.

PLOT PLAN

SCALE: 1 = 20'

- NOTES:
1. ALL BEARINGS SHOWN HEREON ARE BASED ON THE RECORDED PLAT.
 2. THIS PLOT PLAN WAS PREPARED WITHOUT BENEFIT OF A TITLE REPORT. THERE MAY BE EASEMENTS, BUILDING LINES & OTHER MATTERS OF RECORD NOT SHOWN HEREON. SURVEYOR OR ALLPOINTS SERVICES CORP. IS NOT LIABLE FOR ANY DAMAGES THAT MAY INCUR IN ANY EVENT THE BUILDER BUILDS ANY IMPROVEMENTS CLOSER THAN 5.0' OR WITHIN AN EASEMENT.

©2015, ALLPOINTS SERVICES CORP., ALL RIGHTS RESERVED

FOR: RYLAND HOMES
ADDRESS:
20318 WINDSOR FIELD
ALLPOINTS JOB #: RH95301 NH
G.F.:



**ALLPOINTS
SERVICES CORP**
PHONE: 713-468-7707
FAX: 713-827-1861

**LOT 13, BLOCK 4,
LAUREL PARK, SECTION 1,
PLAT No. 671267, PLAT RECORDS,
HARRIS COUNTY, TEXAS**

**RYLAND
HOMES®**

ISSUE DATE: 3/24/2015