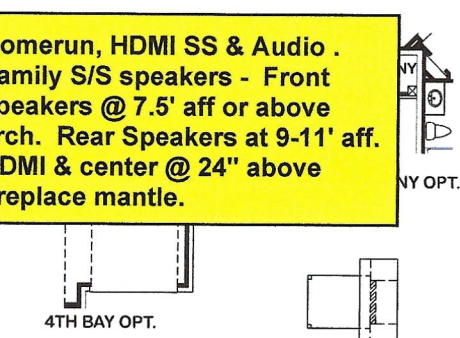
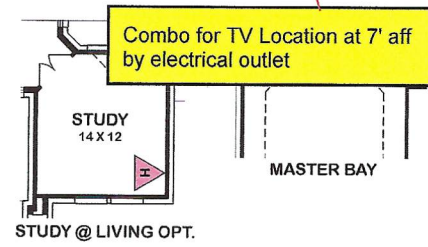
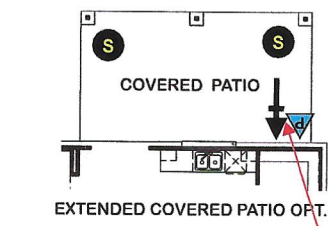
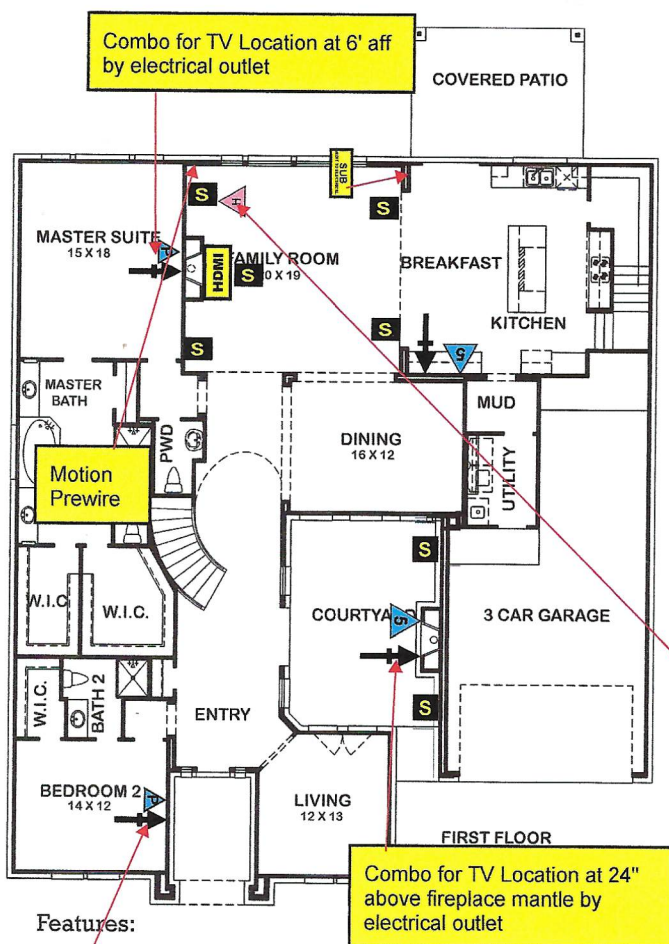


VERSAILLES



CATERER'S KITCHEN OPT.

| | |
|---|-----------------------|
| ▲ | Phone/Cable |
| ▲ | HOH (2-data/1-cable) |
| ▲ | Phone |
| ▲ | Data |
| ▲ | Cable |
| ▲ | Phone/Data |
| ▲ | Quad (2-data/2-cable) |
| ▲ | 3-Phone/1-Cable |
| ▲ | Conduit |
| ▲ | In-Ceiling Speaker |
| ▲ | In-Wall Speaker |
| ▲ | Subwoofer |
| ▲ | HDMI |
| ▲ | Carbon Monoxide |
| ▲ | GlassBreak Detector |
| ▲ | Smoke Detector |
| ▲ | Motion Detector |

MA
MASTER CLOSET OPT.

Homerun, HDMI SS & Audio . Family S/S speakers - Front speakers @ 7.5' aff or above arch. Rear Speakers @ 9-11' aff. HDMI & center @ 24" above fireplace mantle.

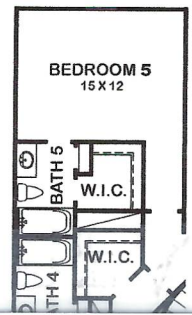
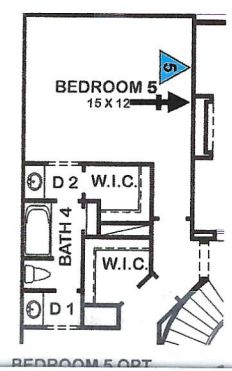
Combo for TV Location at 24" above fireplace mantle by electrical outlet

- Features:
- Approx. 4379 Square Feet
 - 17 1/2 Bath
 - 3-Car Garage

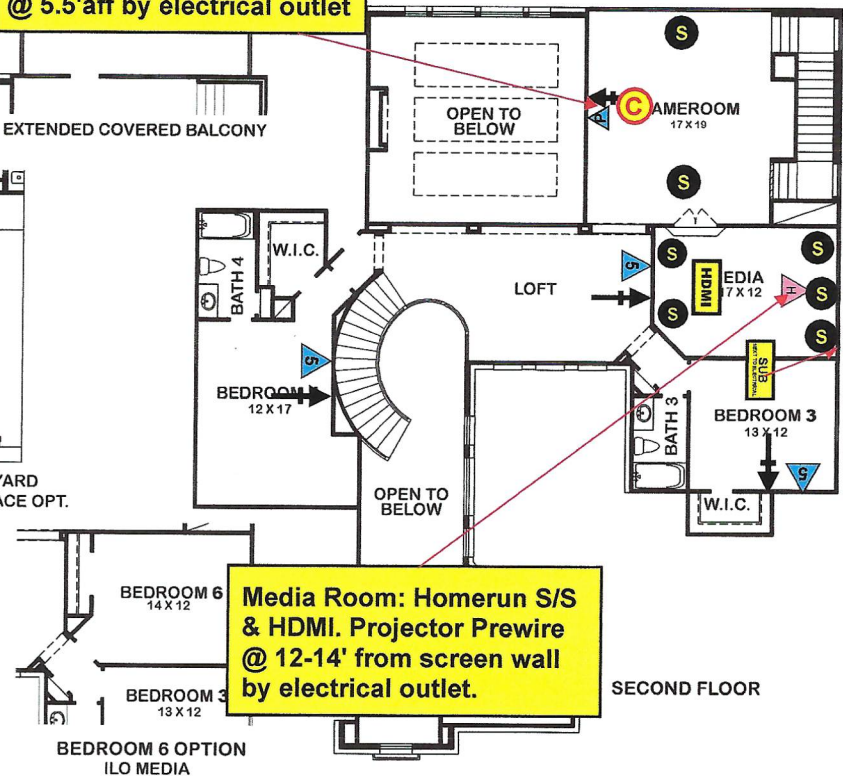
Combo for TV Location at 6' aff by electrical outlet



Homerun Conduit. Conduit @ 5.5' aff by electrical outlet



COURTYARD FIREPLACE OPT.



Media Room: Homerun S/S & HDMI. Projector Prewire @ 12-14' from screen wall by electrical outlet.

relied upon as representations, express or implied, of the final detail of the residences. The builder expressly reserves the right to change. Dimensions and square footages are approximate and may vary with actual construction. rev 12/17 (7020)