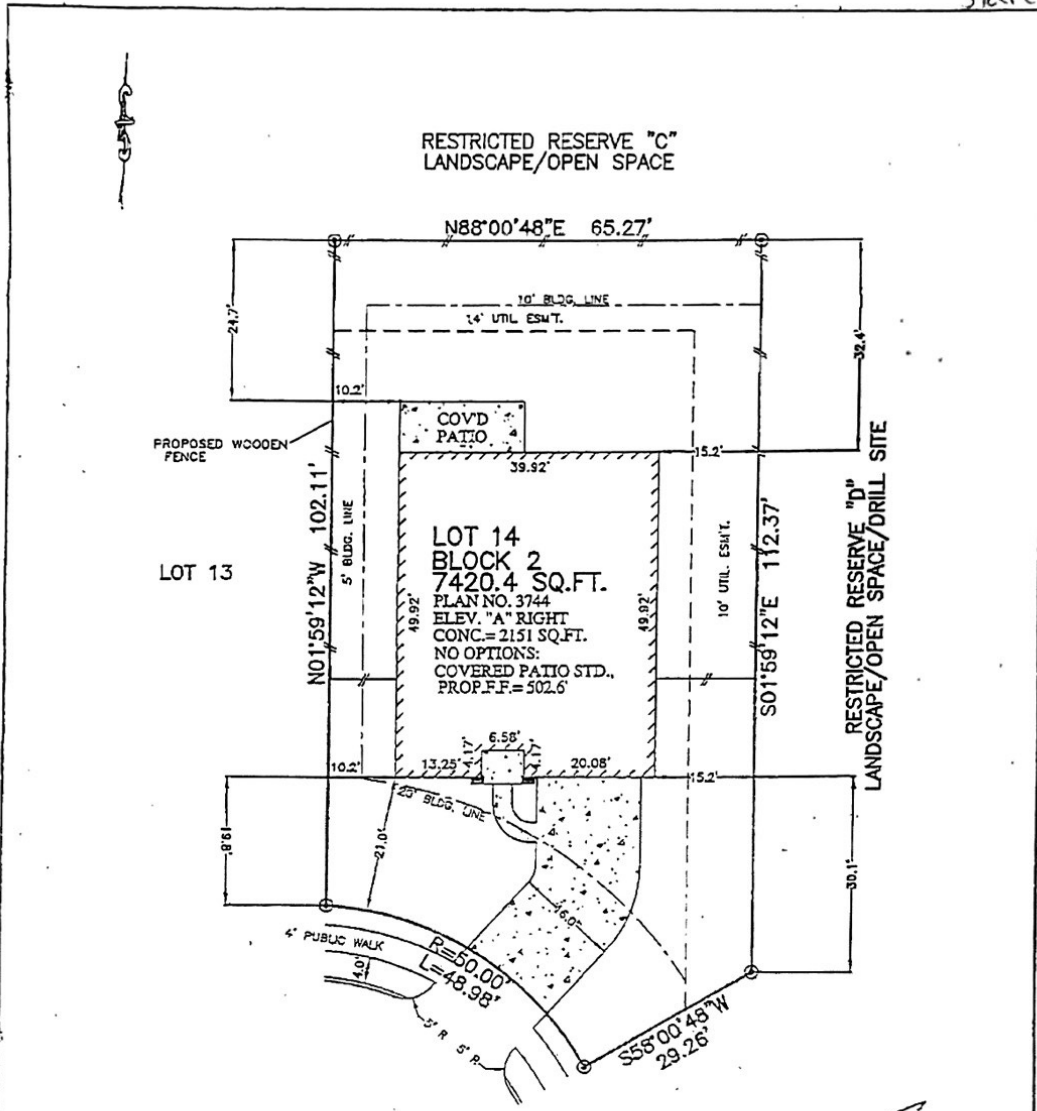


Flikema
Start Nov 2



14831 RALEIGHS MEADOW COURT
(CUL-DE-SAC)
28' CONCRETE PAVEMENT

APPROX. LOT COVERAGE:	23.99%
FENCE (LIN. FT.)	225.24 L.F.
HOUSE AREA	2151 SQ. FT.
FRONT SOD:	160 SQ. YD.
BACK SOD:	317 SQ. YD.
LEFT SOD:	17 SQ. YD.
RIGHT SOD:	25 SQ. YD.
R.O.W. SOD:	21 SQ. YD.
TOTAL SOD:	540 SQ. YD.
A/C PAD	16 SQ. FT.
PRIVATE WALK	33 SQ. FT.
PUBLIC WALK	1.1 SQ. FT.
DRIVEWAY	585 SQ. FT.
IN-TURN	193 SQ. FT.
TOTAL PAVING:	919 SQ. FT.

NOTES:
1. ALL BEARINGS SHOWN HEREON ARE BASED ON THE RECORDED PLAT.
2. THIS PLOT PLAN WAS PREPARED WITHOUT BENEFIT OF A TITLE REPORT. THERE MAY BE EASEMENTS, BUILDING LINES & OTHER MATTERS OF RECORD NOT SHOWN HEREON. SURVEYOR OR ALLPOINTS SERVICES CORP. IS NOT LIABLE FOR ANY DAMAGES THAT MAY INCUR IN ANY EVENT THE BUILDER BUILDS ANY IMPROVEMENTS CLOSER THAN 5.0' OR WITHIN AN EASEMENT.

PRELIMINARY ONLY

PLOT PLAN
SCALE: 1" = 20'

© 2015, ALLPOINTS SERVICES CORP., ALL RIGHTS RESERVED

FOR: LENNAR HOMES
ADDRESS:
14831 RALEIGHS MEADOW COURT
ALLPOINTS JOB #: LH105545
JOB# 4511567214 ARM

LOT 14, BLOCK 2,
FAIRFIELD VILLAGE SOUTH, SECTION 15,
FILM CODE NO. 673126, MAP RECORDS,
HARRIS COUNTY, TEXAS



ALLPOINTS
SERVICES CORP
PHONE: 713-468-7707
FAX: 713-827-1861

ISSUE DATE: 9/16/2015

LENNAR

ALLPOINTS SERVICES CORP. COMMERCIAL/BUILDER DIVISION 1515 WITTE ROAD HOUSTON, TEXAS 77080