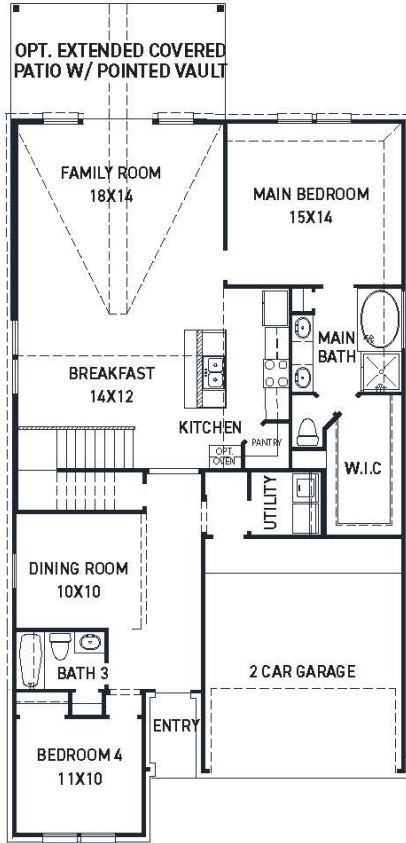


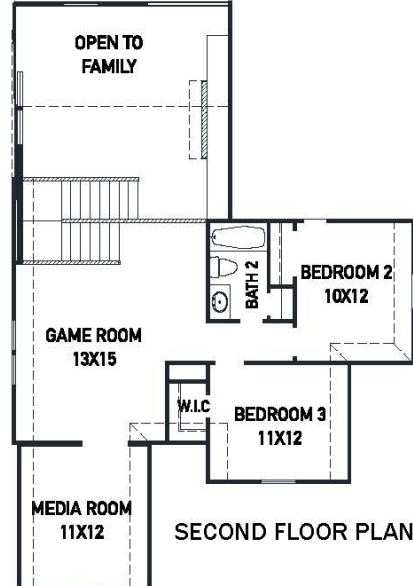
1830 Waters Branch Dr. - Maverick Plan

SIENNA 45' - Heritage Park - Section 29A

NEW COME COMING SOON!



FIRST FLOOR PLAN



SECOND FLOOR PLAN

- Stucco front elevation w/ brick on the 1st floor sides/back
- Built in appliances w/ a 36" 5 burner gas cook-top
- Modern 42" kitchen cabinetry w/ hardware
- Quartz in the kitchen & bathrooms
- Wood look tile in the main living areas
- Upgraded 8' wood front door with privacy Novomat glass

- THE NEWMARK STANDARD IN SIENNA
- Open cell spray foam insulation
- 16 seer duel stage HVAC system
- Full sprinkler system & sod
- Full rain gutters
- 2 year Energy Ogre agreement
- 3rd party inspections (Foundation, frame, energy, final)

FEATURES

- 2 Story - Apx: 2446sqft.
- 4 Bedrooms - 3 Bathrooms
- 2 Car Garage
- 6,335sqft. Pool Sized Homesite
- Estimated Completion: Aug. 2022

REV 8/20 (452M)



These drawings are conceptual only and are for the convenience of reference. They should not be relied upon as representations, express or implied, of the final detail of the residences. The builder expressly reserves the right to make modifications, revisions, and changes it deems desirable in its sole and absolute discretion. Dimensions and square footages are approximate and may vary with actual construction.