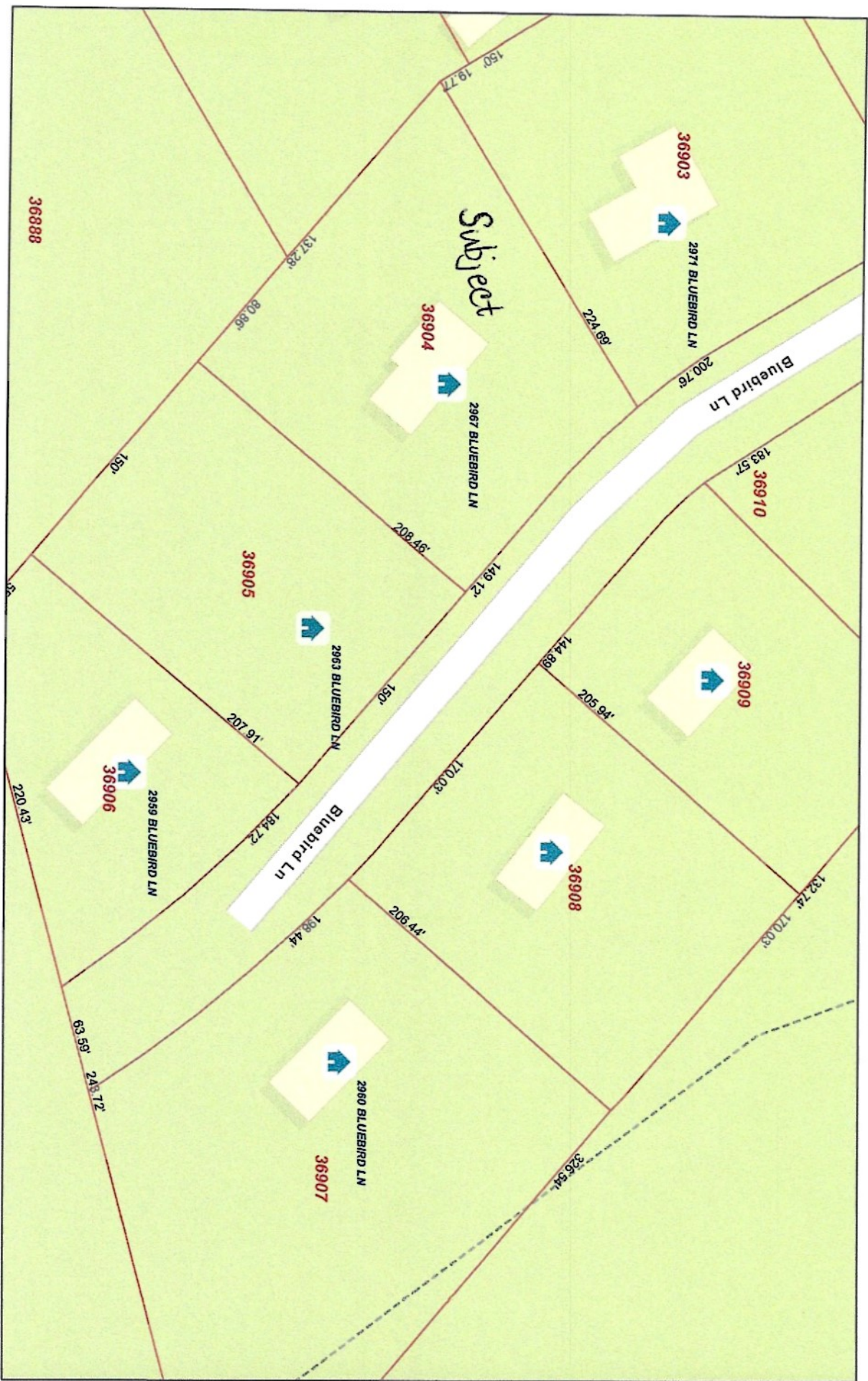


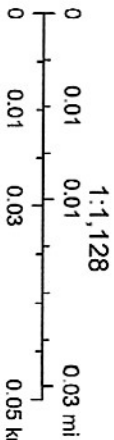
Walker CAD Web Map



6/13/2022, 6:09:34 PM

Parcels Lot Lines

Abstracts City of Huntsville Address Points



Disclaimer: This product is for informational purposes only and has not been prepared for or be suitable for legal, engineering, or surveying purposes. It does not represent an on-the-ground survey and represents only the approximate relative location of boundaries.

Walker County Appraisal District, BIS Consulting - www.bisconsulting.com

Sources: Esri, HERE, Garmin, FAO, NOAA, USGS, © OpenStreetMap contributors, and the GIS User Community