

2558 FM 390 E, 9.313 acres



6/17/2022, 11:28:11 AM

Parcels

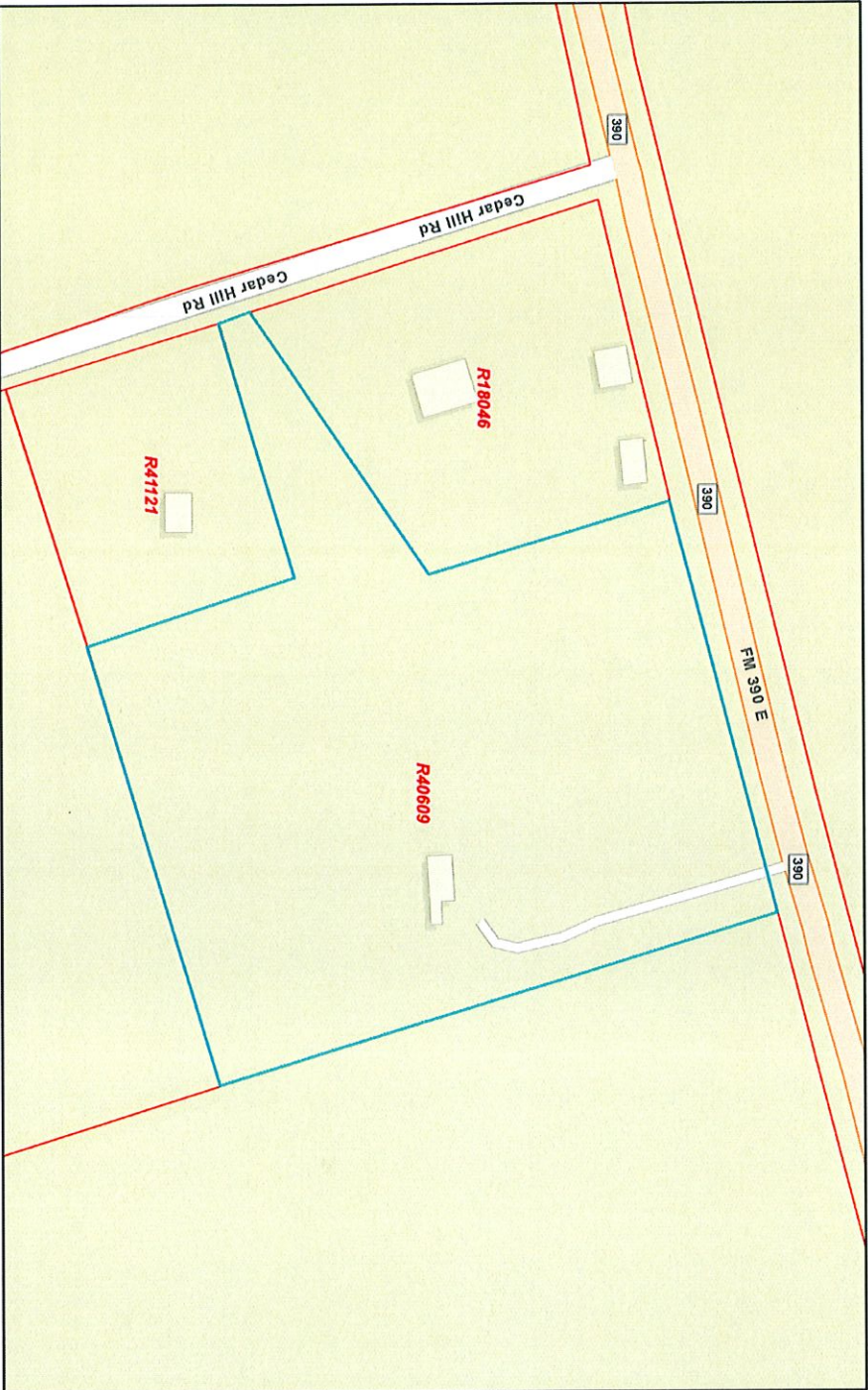
Washington County Boundary

© OpentStreetMap (and) contributors, CC-BY-SA



Washington County Appraisal District, GIS Consulting -
Disclaimer: This product is for informational purposes only and has not been prepared for or be suitable for legal, engineering, or surveying purposes. It does not represent an on-the-ground survey and represents only the approximate relative location of boundaries.

2558 FM 390 E, 9.313 acres



6/17/2022, 11:27:20 AM

Parcels

Washington County Boundary

Disclaimer: This product is for informational purposes only and has not been prepared for or suitable for legal, engineering, or surveying purposes. It does not represent an on-the-ground survey and represents only the approximate relative location of boundaries.

Sources: Esri, HERE, Garmin, FAO, NOAA, USGS © OpenStreetMap contributors, and the GIS User Community

Washington County Appraisal District, GIS Consulting -