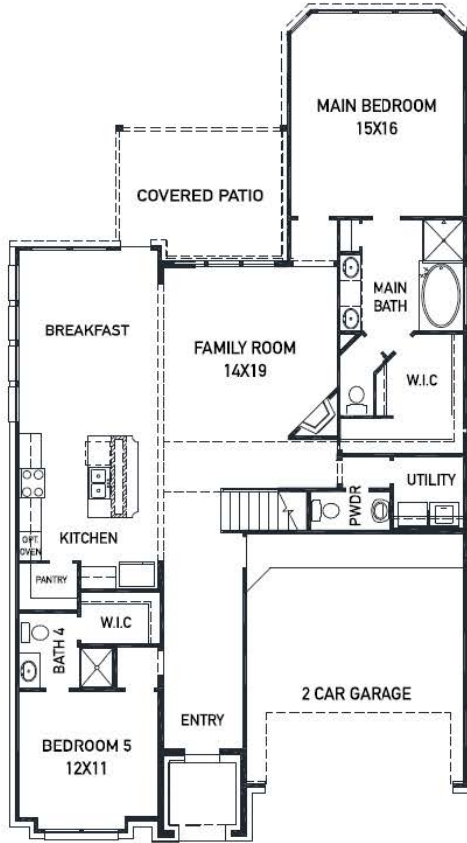


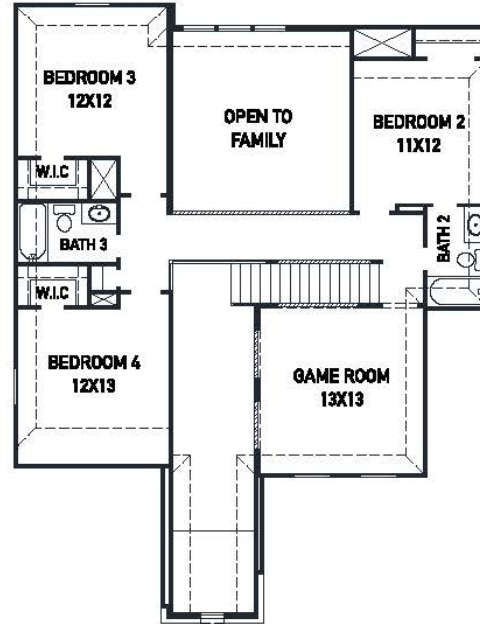


# 9602 Crescent Mill Dr. - Heidelberg Plan SIENNA 50' - Heritage Park - Section 33D

NEW HOME COMING SOON!



FIRST FLOOR PLAN



SECOND FLOOR PLAN

## FEATURES

- 2 Story - Apx: 2995sqft.
- 5 Bedrooms - 4.5 Bathrooms
- 2 Car Garage
- 6926 sqft. Homesite
- Estimated Completion: Sep. 2022

- Professionally designed & hand selected options
- Upgraded front elevation w/ brick on 1st floor sides/back
- Built in appliances w/ a 36" gas cook-top & cabinet hood
- 42" kitchen cabinetry w/ hardware
- Polished Porcelain countertops in the kitchen
- Elegant hardwoods in the main living areas
- Upgraded 8' front door w/ privacy glass
  
- THE NEWMARK STANDARD IN SIENNA
- Open cell spray foam insulation
- 16 seer dual stage HVAC system
- Full sprinkler system & sod
- Full rain gutters
- 3rd party inspections (Foundation, frame, energy, final)
- 2 year Energy Ogre Membership

REV 8/20 (5010)



These drawings are conceptual only and are for the convenience of reference. They should not be relied upon as representations, express or implied, of the final detail of the residences. The builder expressly reserves the right to make modifications, revisions, and changes it deems desirable in its sole and absolute discretion. Dimensions and square footages are approximate and may vary with actual construction.