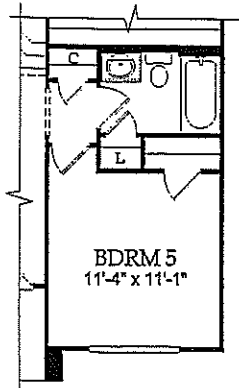


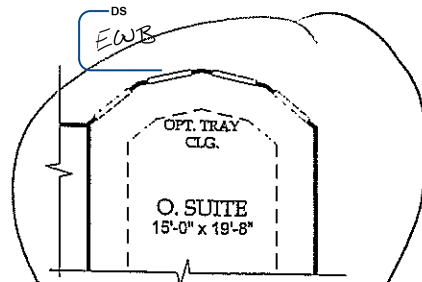
WINSFORD

floor plan

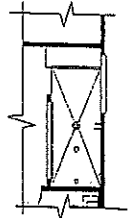
4-5 BEDROOMS
 3.5-4 BATHROOMS
 3,516 SQ. FT.



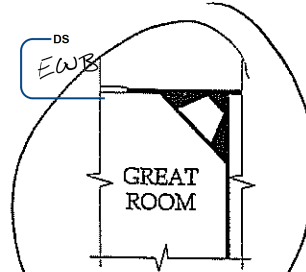
Opt Bedroom/
 Bath ILO Flex



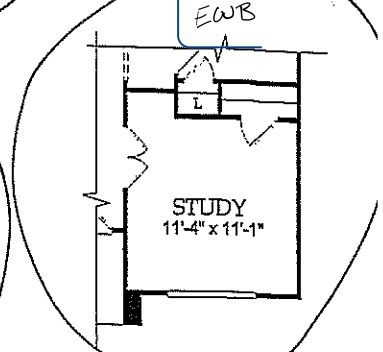
Opt Window Bay
 at Owner's Suite



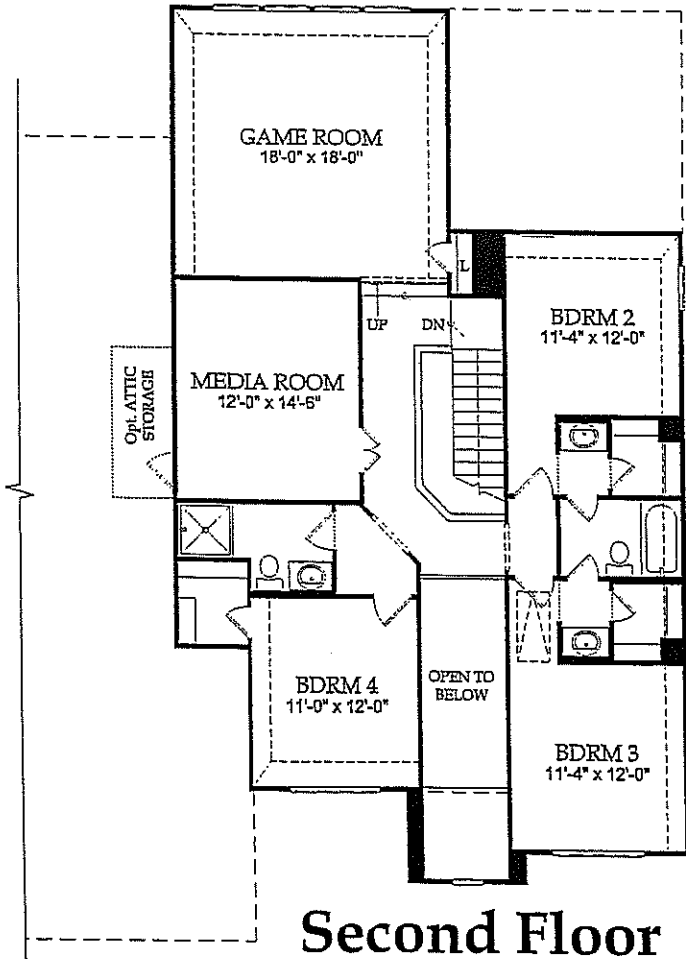
Opt Owner's Bath



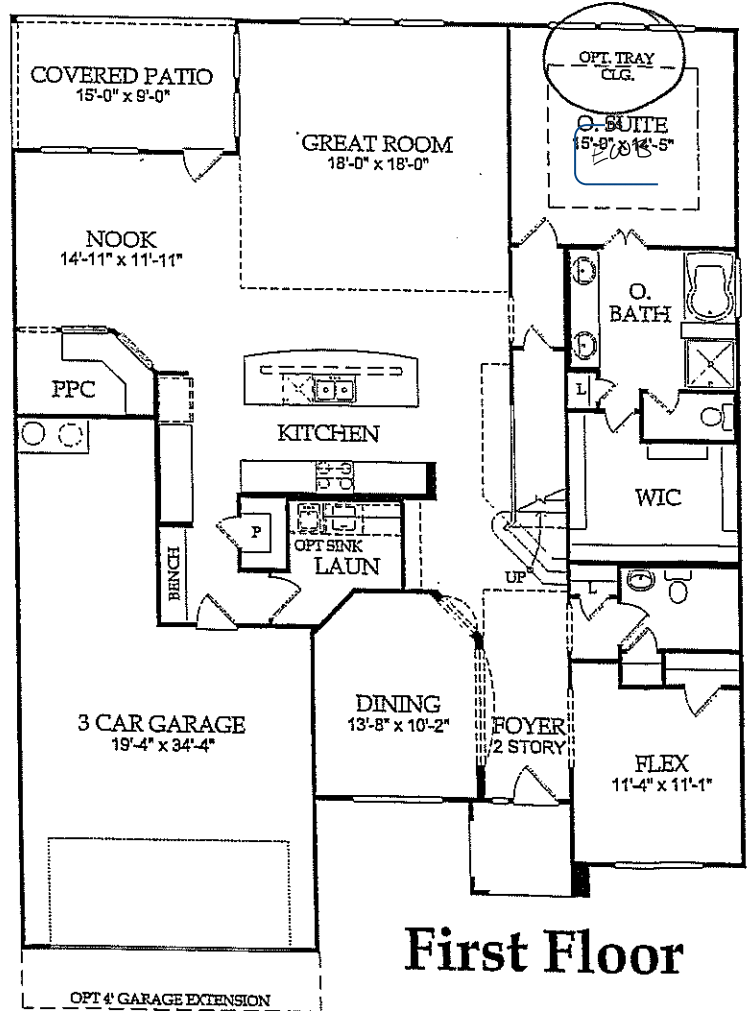
Opt Fireplace
 at Great Room



Opt Study
 ILO Flex



Second Floor



First Floor



Revised 2013. Elevations shown are artist's concepts. Floor plans may vary per elevation. Room sizes vary per elevation. Pulte reserves the right to make changes without notice or prior obligation. Square footage is approximate. ©2013 Pulte Homes. BTZ - 1716.100.02_09.27.13





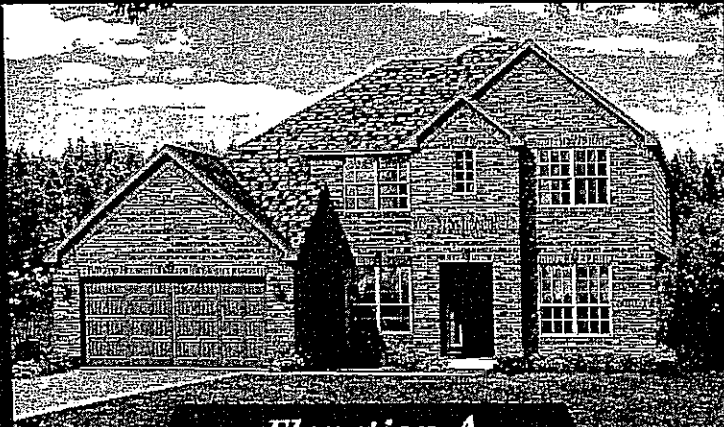
the WINSFORD



4-5 BEDS

3.5-4 BATHS

3,516 SQ. FT.



Elevation A



Elevation B



Elevation D



Elevation E

WIMBLEDON FALLS 60

Life Tested™ Standard Features

Interior

- Emser Tile® 13" Ceramic Tile in Entry, Bathrooms, Kitchen, Nook, and Utility Room
- Mohawk® Carpet with 5.5-pound Carpet Pad
- Rounded Drywall Corners with Textured Walls and Ceilings
- Sherwin-Williams® Interior Paint
- Rocker Switches
- Ceiling Fans w/ Light Kit in Great Room, Owner's Suite, and Game Room (Per Plan)
- All Secondary Bedrooms Blocked and Prewired for Ceiling Fans
- Decorative Nickel Light Fixture Package
- Decorative Chrome Bathroom Vanity Light Fixtures
- Fluorescent Lighting in Laundry Room and Owner's Closet
- Raised 3- Panel Textured Interior Doors
- Privacy Locks on Owner's Suite and all Bathroom Doors
- Schlage® Nickel Lever Interior Door Hardware
- Dual Phone (Cat5E) and Cable (RG6) Outlets (3 Locations Per Plan)
- 9-foot Ceiling Heights
- 3 1/4" Colonial Baseboards with 2 1/8" Door Casing
- Crown Molding in Owner's Suite and Formals (Per Plan)
- Wood Closet Rods and Shelving
- Staircases Include Wood Spindles with Stained Oak Handrail (Per Plan)
- Pulte Life Tested Drop Zone – Includes bench with lower storage cubbies

Kitchen

- Quality Cabinets® Birch 36/42" Staggered Flat Panel with Crown Molding per plan
- Whirlpool Gold® Black Built-In Appliance Package – Features Gas Cook-top with Sealed Burners, Microwave Vented to the Exterior, Wall Oven and Fully Integrated Dishwasher
- Icemaker Connection for Fridge
- 3 CM Granite Countertops with Square Edge Profile and Ceramic Tile Backsplash
- Recessed Can Lighting
- InSinkErator® Garbage Disposal
- Undermount Stainless Steel Split Kitchen Sink
- Moen® Chrome Single Handle Faucet with Side Hand Spray

Bathrooms

- Quality Cabinets® Birch Cabinetry
- 35" Elevated Comfort Height Double Vanity at Owner's Bath
- Medicine Cabinet in Owner's Bath
- Cultured Marble Vanities with Integrated Sinks in Owner and Secondary Baths
- Moen® Chrome Lavatory Faucets
- Moen® Chrome Bath Accessories
- GERBER® Elongated Toilets, including Comfort Height Featured in Owner's and Powder Bath
- Deluxe Owner's Bath with Separate Glass Enclosed Shower and ROYAL® Garden Tub with Deck Mounted Moen® Faucets
- Emser Tile® Shower Surround in Owner's Bath (straight set)
- STERLING® Tub with Fiberglass Wall Surround in all Secondary Baths
- GERBER® White Pedestal Sink in Powder Room

Exterior

- Acme Brick Covering American Made Clay (100-Year Guarantee) on 4 Sides of Home (1st floor only)
- HardieTrim® and Cemplank® Fiber Cement Trim and Siding with 25-Year Manufacturer Warranty
- Sherwin-Williams® Exterior Paint
- Vinyl Divided Light Windows on Front of Home with Half-Screens on all Operable Windows
- 6'8" Therma-Tru® Insulated Textured 6-Panel Front Door
- Schlage® Camelot Single Cylinder Deadbolt & Handleset
- Full Light Door at Rear Entry
- Professional Landscape Package in Front Yard
- Full Sod in Front, Back, and Side Yards
- 2-Coach Lights on Garage
- Gutters and Downspouts on Front of Home
- Windsor® Durable Embossed Metal Garage Door
- LiftMaster® 1/2 HP Garage Door Opener with 2 Remotes
- 16' Wide 2-Car Driveway with 3' Wide Private Walkway from Porch to Driveway
- 2-Hose Bibs on Exterior of Home
- Cast Stone Address Blocks
- Covered Rear Patio Blocked and Wired for Ceiling Fan (varies per plan)
- Broom Finish Front Porches
- Asphalt 30-Year Architectural Shingles
- 6-foot Privacy Fence with Gate

WIMBLEDON FALLS 60

Life Tested™ Standard Features

Energy

- Lennox® 16 SEER High Efficiency HVAC System with Environmentally Friendly 410A Refrigerant and R6 Rated Duct System
- Insulation Package Includes:
 - R-13 Batt Insulation Installed in wall with Zero Tolerance Application
 - R-22 Fiberglass Insulation in Sloped Ceilings
 - R-30 Fiberglass Insulation in Attic
- HardieTrim® Board Exterior Window Trim Product
- High Efficiency Insulated Low-E 366 Vinyl Glass Windows
- Energy Efficient Gas Water Heater
- Radiant Barrier Roof Decking
- Water-Resistive Barrier Thermo-Ply® AMG Protective Sheathing
- Programmable Honeywell™ Thermostat
- Electric Dryer Hookups with Outside Vent
- Roof Vents for Added Ventilation

Protection Plan

- Cable and Rebar Slab per Engineered Drawing with 2500 PSI Concrete
- Borate Treatment on Frame Exterior Walls and Slab Penetrations with Taexx® "Tubes in Wall" Pest Defense System
- Professionally Engineered frame designs
- GFCI Receptacles Located on Home Exterior and in Garage
- Professionally conducted Third Party Inspections at Foundation, Frame, HVAC Duct, and Final Stages
- 1 year limited warranty
- 2 year mechanical warranty
- 5 year water intrusion warranty
- 10 year structural warranty
- Builder Serviced Warranty

Design Center

- Personal appointment with a Professional Decorator Consultant at the Design Center

WIMBLEDON FALLS

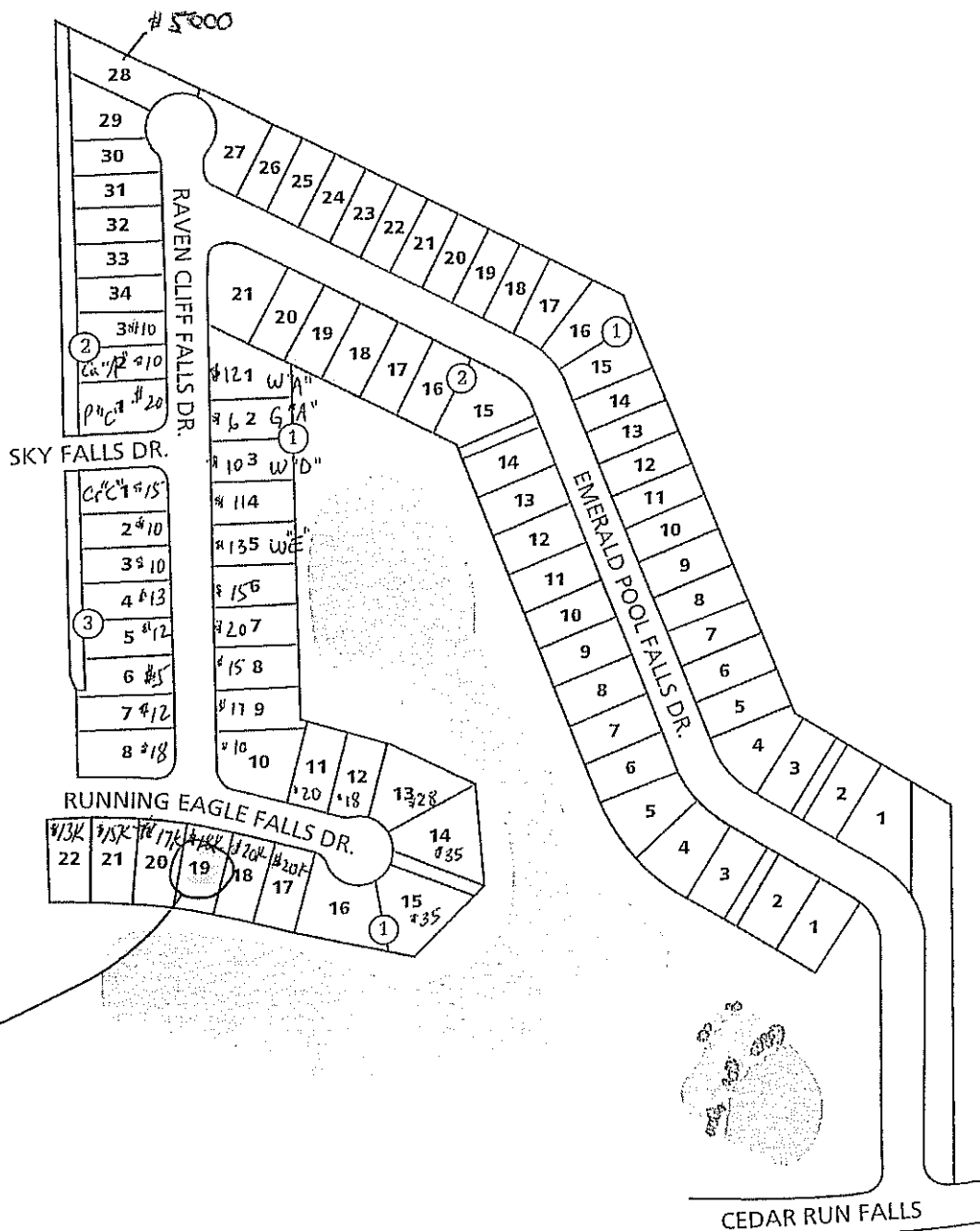
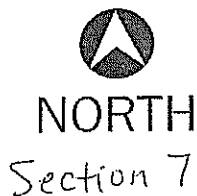
50's
50'x125'

60's
60'x119'

3 - 50'
2 - 50'
1 - 76'

1 - 65'
2 - 50'
3 - 50'
4 - 55'
5 - 55'
6 - 55'

7 - 50'x137'
8 - 65'x137'



DS
EWB



This artist rendition shows lots that were developed or owned by Pulte Homes. No representation is made concerning property not shown on this rendition. This is an artistic representation for planning and display purposes only. FOR ACTUAL LOT AREA, LOT DIMENSIONS, EASEMENTS, BUILDING LOCATIONS, PLEASE CONSULT AND REFER TO OFFICIAL DOCUMENTS. ALL ITEMS SUBJECT TO CHANGE. NOT TO SCALE. ©2014 PulteHomes. All Rights Reserved.

