



TAYLOR LAKE CANAL CONDOS

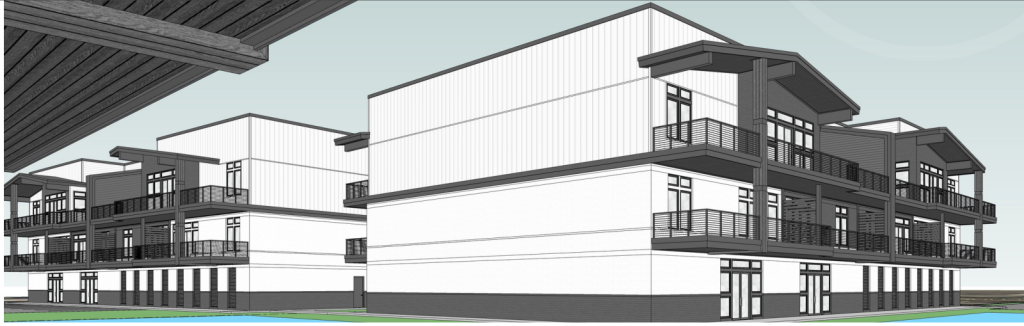
TAYLOR LAKE VILLAGE, TX

WATERFRONT LIVING

PIVOT
REALTY GROUP

TAYLOR LAKE CANAL CONDOS

Where living & leisure come together



For more information contact:



832-425-9507
dawna@pivotrealty.net
www.pivotrealty.net

Real Estate Executive/Owner



346-400-8233
heatherm@pivotrealty.net
@honestlyheatherm

Let's Talk Real Estate



MODERN LIVING

Taylor Lake Canal Condominiums features 72 residences with 2 bedroom units and 3 bedroom penthouses. Modern amenities, a lagoon style pool, walking trails, a fitness center and onsite retail/restaurants make this feel like vacation all year round!

- ✓ BOAT SLIPS
- ✓ OUTDOOR LIVING
- ✓ LAGOON POOL
- ✓ TWO & THREE BEDROOMS
- ✓ OPEN FLOOR PLANS

www.pivotrealty.net

**Features, options, floor plans, elevations, colors, sizes, renderings & photos are for illustration purposes and may vary slightly from actual home/development.*

TAYLOR LAKE CANAL CONDOS

Where living & leisure come together



Penthouse Specifications

- Single level floor plan
- Approximately 2,100 sq ft
- Open concept floor plan
- 3 bedrooms, 3 full bathrooms
- LVT flooring options
- Soft close drawers/doors on cabinets
- Quartz countertops
- Stainless steel appliances
- Windows everywhere
- Large Patio/Deck
- Elevator access
- One boat slip included
- Upgrades available

Property Features

- ✓ Maintenance free exterior
- ✓ Common elevator access
- ✓ Lagoon/swimming pool with beach area
- ✓ Covered parking
- ✓ Internet access in office space
- ✓ Professional landscaping
- ✓ Restaurants/Retail



www.pivotrealty.net

**Features, options, floor plans, elevations, colors, sizes, renderings & photos are for illustration purposes and may vary slightly from actual home/development.*

TAYLOR LAKE CANAL CONDOS

Where living & leisure come together



Two Bedroom Specifications

- Single level floor plan
- Approximately 1,150-1,200 sq ft
- Open concept floor plan
- 2 bedrooms, 2 full bathrooms
- LVT flooring options
- Soft close drawers/doors on cabinets
- Quartz countertops
- Stainless steel appliances
- Windows everywhere
- Covered Patio/Deck
- Elevator access
- Boat slip available for additional fee
- Upgrades available

Property Features

- ✓ Maintenance free exterior
- ✓ Common elevator access
- ✓ Lagoon/swimming pool with beach area
- ✓ Covered parking
- ✓ Internet access in office space
- ✓ Professional landscaping
- ✓ Restaurants/Retail

www.pivotalrealty.net

**Features, options, floor plans, elevations, colors, sizes, renderings & photos are for illustration purposes and may vary slightly from actual home/development.*