

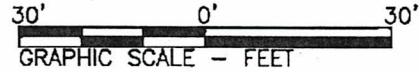
GENERAL NOTES

1. THIS PROPERTY IS SUBJECT TO ADDITIONAL EASEMENTS OR RESTRICTIONS OF RECORD.
2. CARTER LAND SURVEYORS IS UNABLE TO WARRANT THE ACCURACY OF BOUNDARY INFORMATION, STRUCTURES, EASEMENTS, AND BUFFERS THAT ARE ILLUSTRATED ON THE SUBDIVISION PLAT.
3. UTILITY EASEMENT HAS NOT BEEN FIELD VERIFIED BY SURVEYOR. CONTACT UTILITY CONTRACTOR FOR LOCATION PRIOR TO CONSTRUCTION. (IF APPLICABLE)
4. THIS PLAT IS FOR EXCLUSIVE USE BY CLIENT. USE BY THIRD PARTIES IS AT THEIR OWN RISK.
5. DIMENSIONS FROM HOUSE TO PROPERTY LINES SHOULD NOT BE USED TO ESTABLISH FENCES.
6. THIS PLAT HAS BEEN CALCULATED FOR CLOSURE AND IS FOUND TO BE ACCURATE WITHIN ONE FOOT IN 10,000 FEET.
7. THE FIELD DATA UPON WHICH THIS PLAT IS BASED HAS A CLOSURE PRECISION OF ONE FOOT IN 10,000 FEET AND AN ANGULAR ERROR OF 7 SECONDS PER ANGLE POINT AND WAS ADJUSTED USING THE COMPASS RULE.
8. EQUIPMENT USED: TOPCON APL1 TOTAL ROBOTIC STATION.

AREA: 10,721 S.F. ~ 0.25 ACRES
 CAB Z, PAGES 308-311

SCALE: 1" = 30'

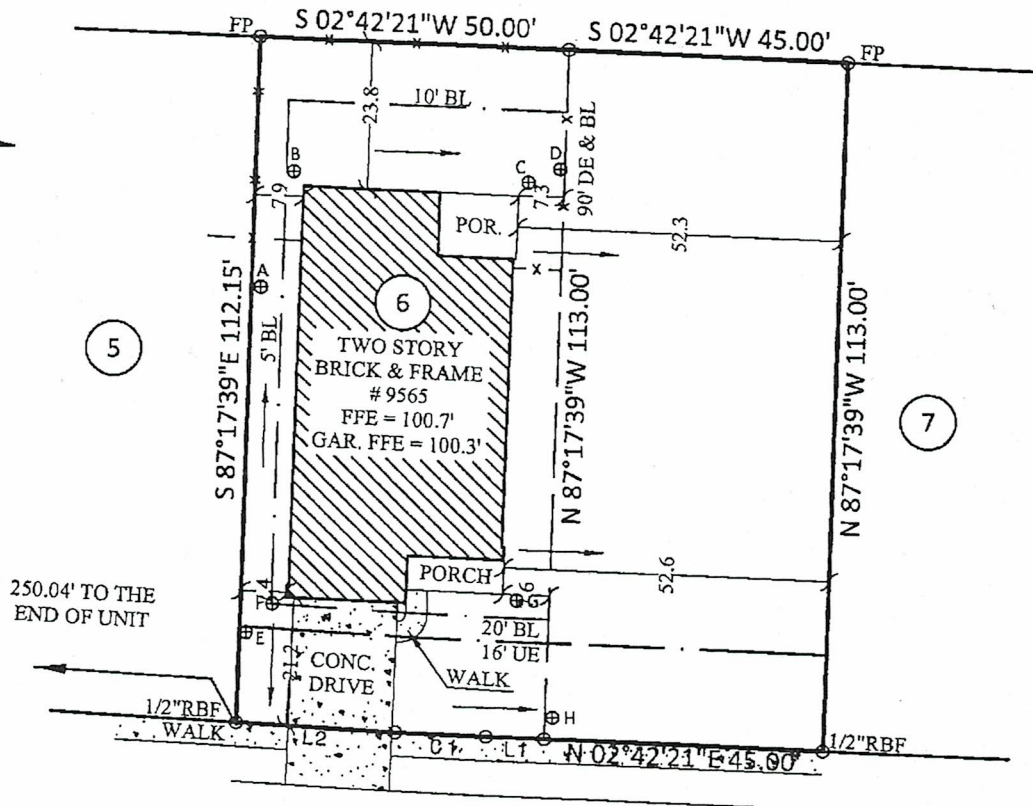
ADDRESS: 9565 EAST WOODMARK



Curve	Radius	Length	Chord	Chord Bear.
C1	570.00'	14.65'	14.65'	N 03°26'32" E

Course	Bearing	Distance
L1	N 02°42'19" E	9.49'
L2	N 04°10'17" E	25.87'

N/F
 BEATRICE HUBER



ELEVATIONS:

- A - 99.3'
- B - 99.6'
- C - 99.7'
- D - 99.3'
- E - 99.3'
- F - 99.9'
- G - 99.9'
- H - 99.1'

LEGEND:

- FP - Fence Post
- PP - Power Post
- P- - Power Line
- SB - Setback Line
- RBS - Rebar Set
- RBF - Rebar Found
- OITPF - Open Top Pipe Found
- CTPF - Crimp Top Pipe Found
- BL - Building Line
- DE - Drainage Easement
- PE - Perpetual Easement
- SSE - Sanitary Sewer Easement
- P - Porch
- UE - Utility Easement
- X- Fence
- D- Drainage Easement
- S- Sewer Easement
- CB - Catch Basin

EAST WOODMARK
 60' R/W

Janh Shuta Parker 4/26/13
Sean V... 4/26/13

NOTE: BASE ELEVATION IS ASSUMED.