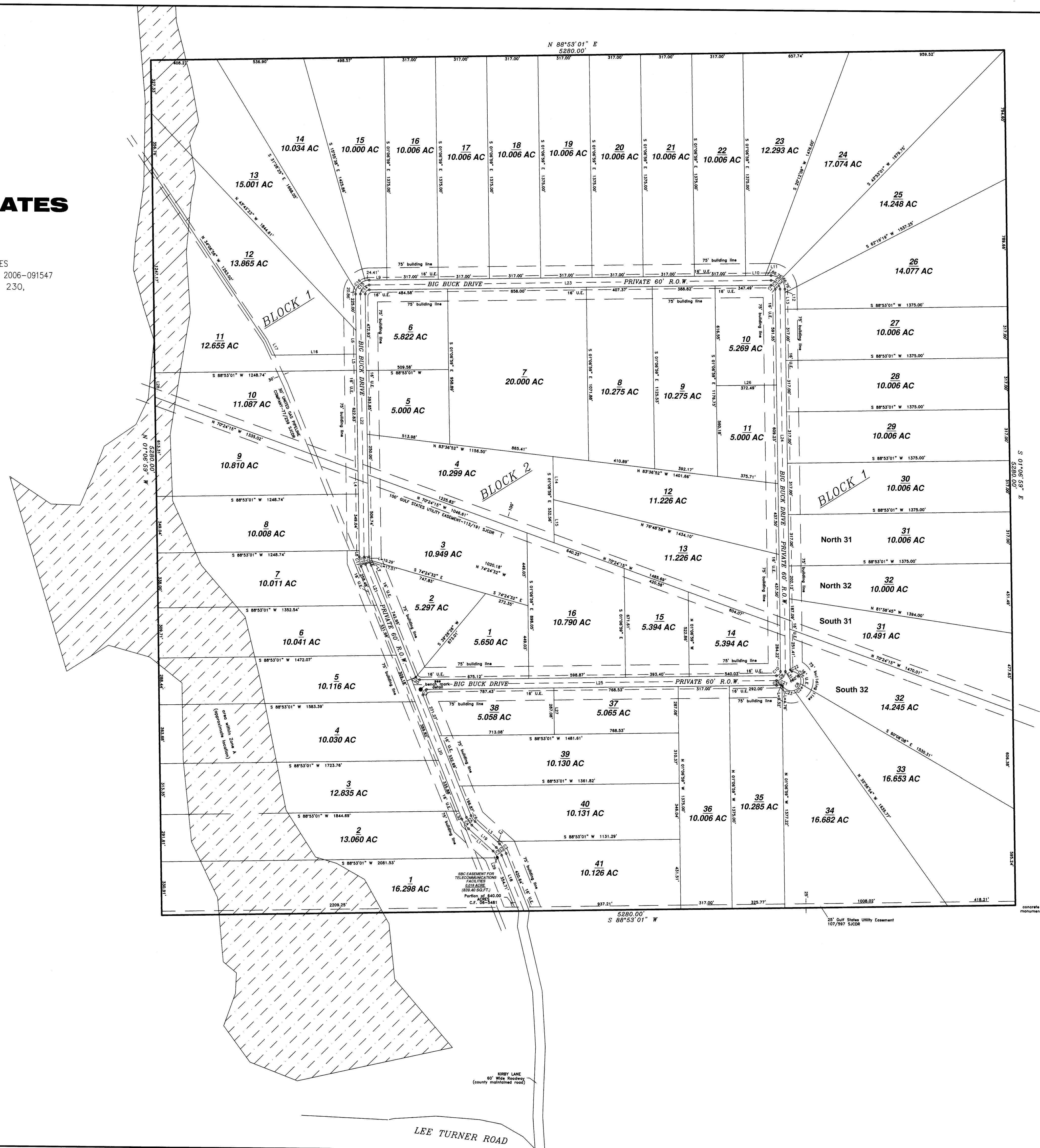


# PEACH CREEK ESTATES SECTION ONE

59 LOTS 2 BLOCKS  
A SUBDIVISION OF 640.000 ACRES OF LAND  
WITH 15.754 ACRES DEDICATED FOR R.O.W. PURPOSES  
AS RECORDED UNDER SAN JACINTO COUNTY CLERK'S FILE NO. 2006-091547  
LOCATED IN THE A. MARTIN SURVEY, A- 230,  
SAN JACINTO COUNTY, TEXAS



LEE TURNER ROAD

KIRBY LANE  
60' Wide Roadway  
(county maintained road)

800' EASEMENT FOR  
TELECOMMUNICATIONS  
FACILITIES  
6.019 ACRES  
(0.0540 SEC. 1)  
Portion of 840.00  
ACRES  
C.F. 06-3481

25' Gulf States Utility Easement  
107/297 S.C.C.M.

concrete monument