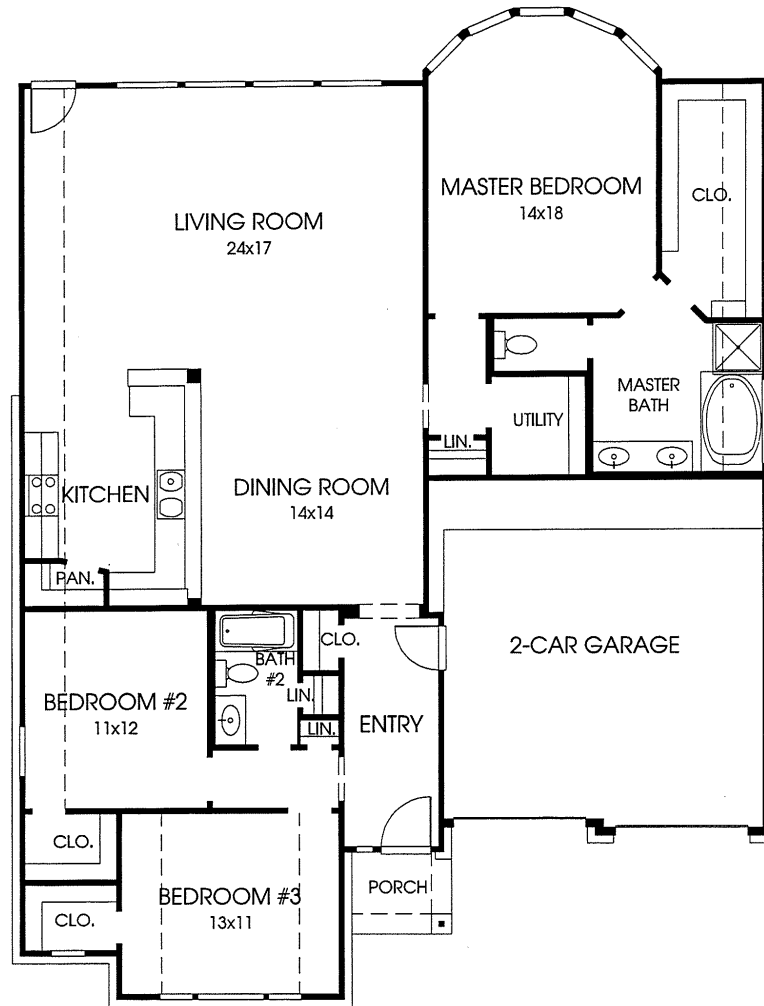


DESIGNS

Plan 1916W

This home contains approximately 1,916 square feet and includes three bedrooms and two baths.



OPTION 1

LIVING ROOM
24x17

This floor plan has the option for a fireplace in the living room.

Not included: inside keyed deadbolt locks, refrigerators, furnishings, drapery, plants, decorator items and all other personal property being used in model homes. Builder reserves the right to make changes in the plans and specifications, and to substitute material of similar quality. Room dimensions indicate approximate inside area measurements.
08/11/2008 - Perry Homes
(CL&CL-W)

Note: The option shown on this brochure is available at an additional cost.

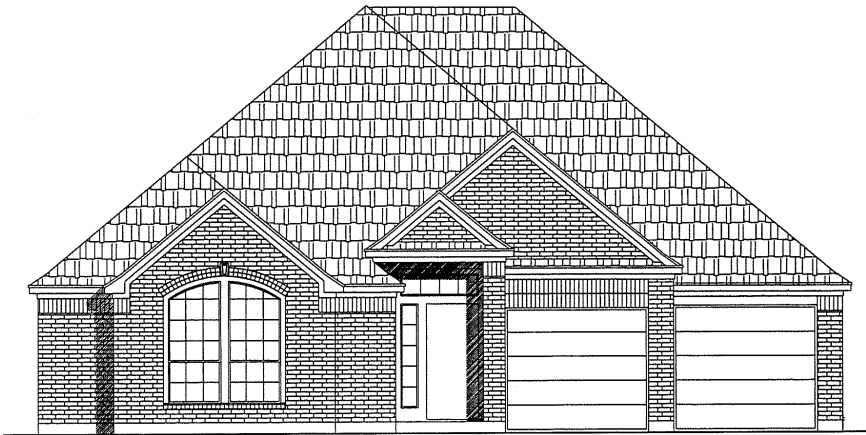
PERRY HOMES



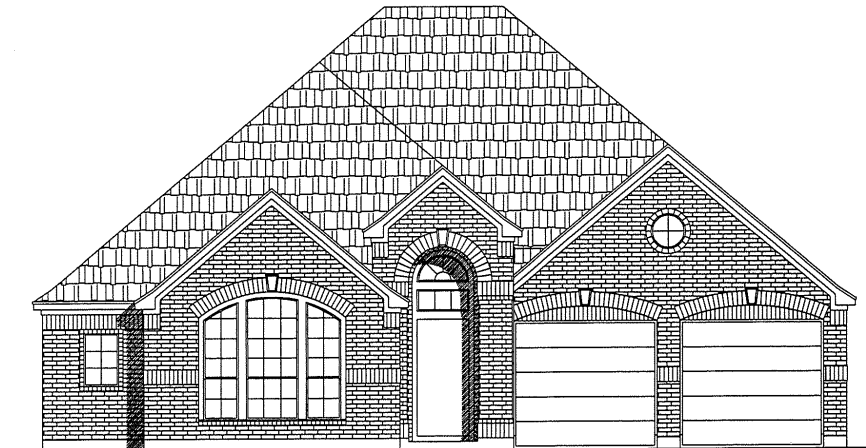
Some of the elevations shown may not be available in all communities.



PLAN 1916W E-1



PLAN 1916W E-2



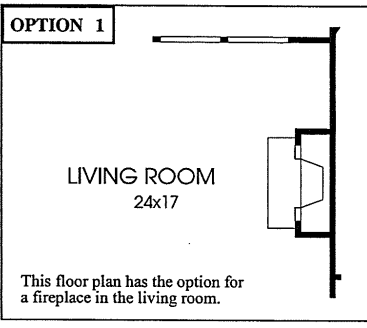
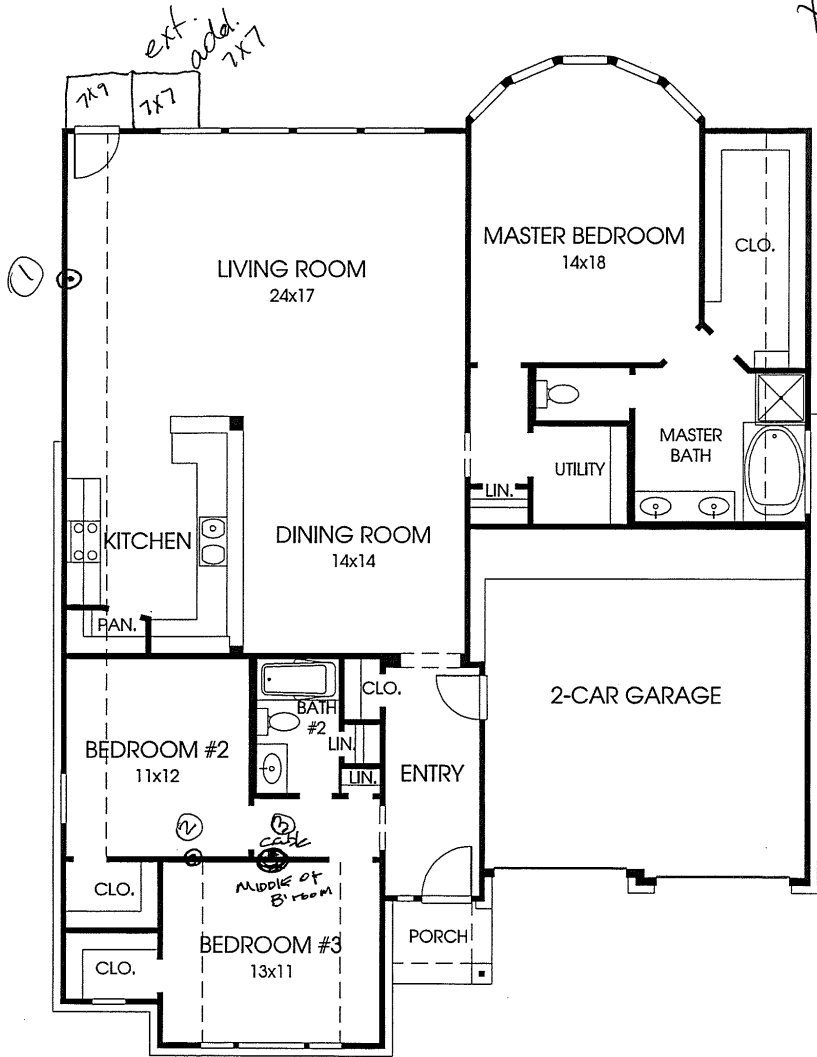
PLAN 1916W E-3

DESIGNS

Plan 1916W

This home contains approximately 1,916 square feet and includes three bedrooms and two baths.

X mmk



Cable outlets

Not included: inside keyed deadbolt locks, refrigerators, furnishings, drapery, plants, decorator items and all other personal property being used in model homes. Builder reserves the right to make changes in the plans and specifications, and to substitute material of similar quality. Room dimensions indicate approximate inside area measurements.
08/11/2008 - Perry Homes (CL&CL-W)

Note: The option shown on this brochure is available at an additional cost.

PERRY HOMES



Some of the elevations shown may not be available in all communities.



PLAN 1916W E-1



PLAN 1916W E-2



PLAN 1916W E-3

FEATURES

Features Included in Lakeshore, Shoreline Series, 55' Section

Quality Construction

- Limited Builder Warranty: Two year Workmanship Warranty, Ten year Structural Warranty.
- Hardiplank exterior siding with a 50-year transferable manufacturer's warranty (varies per plan).
- Hardiplank trim and soffit for durability.
- Professionally engineered post-tension foundations.
- Exterior base plates anchored to foundation.
- Second story subflooring, 3/4" tongue and groove, glued and screw shank nailed for smoother floors.
- Quality inspections performed by a third party or experienced construction staff at various stages of the construction process.

Exterior

- 30-year warranty architectural shingles – nailed, not stapled.
- Insulated and pinch resistant Wayne Dalton garage doors.
- Front yard grass and landscaping.
- Pre-wired for garage door opener.
- Beautiful six-panel front door.
- Concrete patio (varies per plan).
- Cedar fence in back yard.
- Two-tone paint on exterior of two-story homes.

Safety and Energy

- HardiBacker Cement Board with Moldblock Technology installed to provide superior protection against mold.
- Homes built to meet or exceed ENERGY STAR® and GHBA Green Building Initiative specifications, improving energy efficiency and protecting the environment.
- TechShield® radiant barrier roof decking to reduce heat transfer into the attic (not on detached garages).
- ENERGY STAR® labeled GE dishwasher operates on 40% less energy than the federal minimum standard for energy consumption and uses much less water than conventional models.
- Programmable thermostat.
- High-efficiency 14.0 SEER Carrier air conditioner with environmentally-friendly Puron® Refrigerant.
- High-efficiency Carrier furnace uses a hot surface ignition system and eliminates the need for a pilot light, reducing gas usage and promoting worry-free operation (varies per community).
- Energy-efficient State water heater with Green Choice gas burner reduces nitrogen oxide emissions up to 33% (varies per community).
- R-13 batt insulation in walls and R-30 blown insulation in all flat ceilings.
- Dow sheathing with a 3.0 R-Value.
- Polycel sealant around all windows, doors, pipes, wiring holes, and exterior base plates.
- Thermostatically-controlled power attic ventilator.
- Blocked and pre-wired for ceiling fans in family room, secondary bedrooms and master bedroom.*
- High-efficiency insulated low-E glass windows to reduce ultraviolet radiation.
- All exterior doors weather-stripped on-site.
- Smoke and carbon monoxide detectors.
- Fresh Air Intake System for improved indoor air quality.
- FlowGuard Gold plumbing system installed in homes, improving both water purity and energy efficiency.
- Gas line available for cooktop (varies per community).*
- Commodes use 1.6 or less gallons for water conservation.
- Pre-wired for alarm system.
- Heating and air conditioning unit located in attic for low noise level and space efficiency.

Interior Design

- Ceramic tile entry.
- Raised two-panel interior doors.**
- Powder room has Price Pfister faucet, pedestal sink, and octagonal mirror with beveled edges (varies per plan).
- Ceramic tile flooring in powder room, utility room and secondary baths (varies per plan).
- Medicine cabinet in secondary baths.
- Separate utility room with clothes rod and shelf (varies per plan).
- 9-foot ceilings on first floor of two-story plans (varies per plan).

Kitchen

- Job-built 42-inch cabinets with recessed doors.
- GE electric slide-in range.
- GE built-in microwave.
- GE dishwasher.
- Ceramic tile flooring in kitchen/morning area.
- Stainless steel sink with Price Pfister faucet.
- Recessed can lighting.
- Decorative laminate countertops with ceramic tile backsplash.

Master Bath

- Garden tub with cultured marble surround (varies per plan).
- Separate glass enclosed shower with ceramic tile surround (varies per plan).
- Ceramic tile flooring in master bath and commode room.
- Price Pfister faucets.
- Price Pfister Roman tub faucet on garden tub.
- Cultured marble vanity top with two oval sinks.
- Medicine cabinet in master bath.

Design Center

- Four (4) hours of complimentary design service to complete your selections.



*Available on homes started after September 1, 2008.

**Available on homes started after November 1, 2008.

Builder reserves the right to make changes in the plans and specifications, and to substitute material of similar quality.

Houston Area

November 1, 2008

PERRY HOMES



(CL-Base)(129/400)(55)