

# Yorktowne Oaks – Included Features



## Energy Conservation

- **Energy Star®** Qualified Homes Certified by Third-Party Inspector
- R-15 Exterior Wall Fiberglass Insulation
- R-19 Ceiling Fiberglass Insulation (Slope Ceiling)
- R-38 Ceiling Fiberglass Insulation (Flat Ceiling)
- Energy Efficient Gas Water Heater (size per plan)
- High Efficiency **14-SEER Carrier®** HVAC System with Digital Core **Carrier®** Thermostat
- R-6 Insulated Air Conditioning Duct Work
- **LP® TechShield®** Radiant Barrier
- Upgraded Polycell Sealant Around All Windows, Doors and Exterior Walls
- Energy Efficient Toilets and **Moen® WaterSense®** Shower Heads and Faucets
- Double Pane High Performance Low E<sup>3</sup> 1/1 Front, Side and Rear Vinyl Windows – White or Beige Finish
- Construction Complies with the International Residential Code and Exceeds the International Energy Conservation Code
- LED Recessed Lights
- **Energy Star®** Appliances
- **Energy Star®** Ventilation Fan in Bathrooms

## Exterior Construction

- **Claymex** Brick on Front and 2-ft. Return (per plan and elevation; 10 colors available)
- **Cemplank®** Fiber Cement Siding (A James Hardie® Building Product)
- **Hardie®** Ventilated Soffit
- **Hardiplank®** Fiber Cement Fascia
- **Hardie®** Window and Corner Trim
- Structural Engineered Post-Tension Foundation
- Engineered Panelized Wall Systems to Assure Sound Construction, Plumbness, Squareness and Structural Integrity
- Engineered Trusses for Maximum Strength
- 25 Year Warranty 3-Tab Shingles
- Durable Thermo-Sheath Sheathing in Brick Areas
- 6-Panel Textured and Painted Front Door
- Rear 6-ft. 8-in. Full Lite Door with 3-ft. x 3-ft. Concrete Stoop
- Screens on All Operable Windows
- Three-Tone Exterior Paint- **Sherwin Williams®** Pure Acrylic Primer with Latex Satin Top Coat
- Durable Concrete Walks and Drives
- Precast Address Block
- Side and Rear Exterior Water Faucets
- Front and Rear GFCI Outdoor Electrical Outlets
- Sealed Roof Penetrations

## Safety/Security

- **Kwikset®** Tylo Key Entry Knob with Deadbolt Lock in Satin Chrome Finish
- Doorbell and Peephole
- Smoke Detectors with Battery Back-Ups
- Reinforced Steel Raised Panel Garage Door
- Ground Fault Interrupter (GFCI) and Arc Fault Protection
- Exterior Lighting at Front and Rear Doors
- Fully Enclosed 6-ft. 1-in. x 6-in. Cedar Fence (Good Neighbor Style) to Start at Rear Corners of Home with One Gate on Garage Side

## KB Home Advantage

- 10 Year KB Home Limited Structural Warranty
- Four Strategic Point Inspections Conducted Throughout the Construction Process by Independent, Registered Engineers and FHA Inspectors
- "Sewer Cam" Video Inspection of Sewer Lines by Independent Inspector
- **HomeTeam Pest Defense®** Tubes in the Wall (service not included)
- Standard Boracare Termite Treatment
- Toll-Free 24-Hour Customer Care Line
- Professional Design Assistance at KB Home Studio
- Internationally Recognized Builder Listed on the NYSE
- Fortune 500 Company and NHQ certified by NAHB
- #1 Ranked Homebuilder on Fortune Magazine's "World's Most Admired Companies"

## Interior Construction

- Elegant Wood Grain 6-Panel Interiors Doors
- **Kwikset®** Tylo Knobs in Satin Chrome Finish
- 3¼-in. Colonial Baseboards and 2-in. Door Casings
- **Emser®** Daytona 13-in. x 13-in. Tile in Entryway, Kitchen/Breakfast Nook, Laundry, Master and Secondary Baths
- Powder Bath (per plan)
- Stairs Feature Half Wall with 1-in. x 8-in. Painted Cap
- **Shaw®** Wall-to-Wall Carpeting with 3/8-in. Carpet Pad (Level A)
- Telephone Jack in Kitchen and One Additional Room
- Cable TV Outlet in Main Living Area and One Additional Room
- Zero VOC Flat Latex Walls and Ceilings in **Sherwin Williams®** Simply White
- Zero VOC Gloss Trim and Moldings in **Sherwin Williams®** Simply White
- 8-ft. Ceilings Throughout
- Garage Walls and Ceiling Fully Sheet Rocked and Painted
- Garage Prewired for Garage Door Opener
- Washer and Electric Dryer Connections in Laundry Rooms
- Ceiling Light and Fan Prewire in Bedrooms, Main Living Area and Game Room
- Insulated Attic Access Hood Per Plan

## Kitchen Appointments

- 30-in. **San Antonio** Birch Cabinets in Two Finishes
- Pre-Plumbing for Icemaker Line
- 1/3 HP Garbage Disposal
- Five 12-in. Shelves in Pantry and Linen
- Dual-Compartment Stainless Steel Sink
- Single Handle Chrome Finish **Moen® WaterSense®** Faucet
- **DuPure®** Single Stage Water Filtration System with Spigot
- **Wilsonart®** Laminate Square Edge Countertops with 4-in. Black Backsplash
- **Whirlpool®** Free-Standing Gas Range in White or Black
- **Whirlpool®** Large Capacity Dishwasher in White or Black
- **Whirlpool®** Venthood – Exterior Exhaust at Range in White or Black
- LED Recessed Lights in Kitchen and Breakfast Nook (per plan)

## Master Bathroom Appointments

- 42-in. x 60-in. **Sterling® Ensemble™ Vikrell®** Tub with 13-in. x 13-in. **Emser®** Daytona Tile Surround
- Pressure Balancing Shower Valves
- Solid Surface Countertop and 4-in. Backsplash
- Two Porcelain Undermount Vanity Bowls
- Elongated Toilet
- Chrome Hardware and Single Lever Chrome Finish **Moen® WaterSense®** Faucet
- **San Antonio** Birch Cabinets in Two Finishes


## Secondary Bathroom Appointments

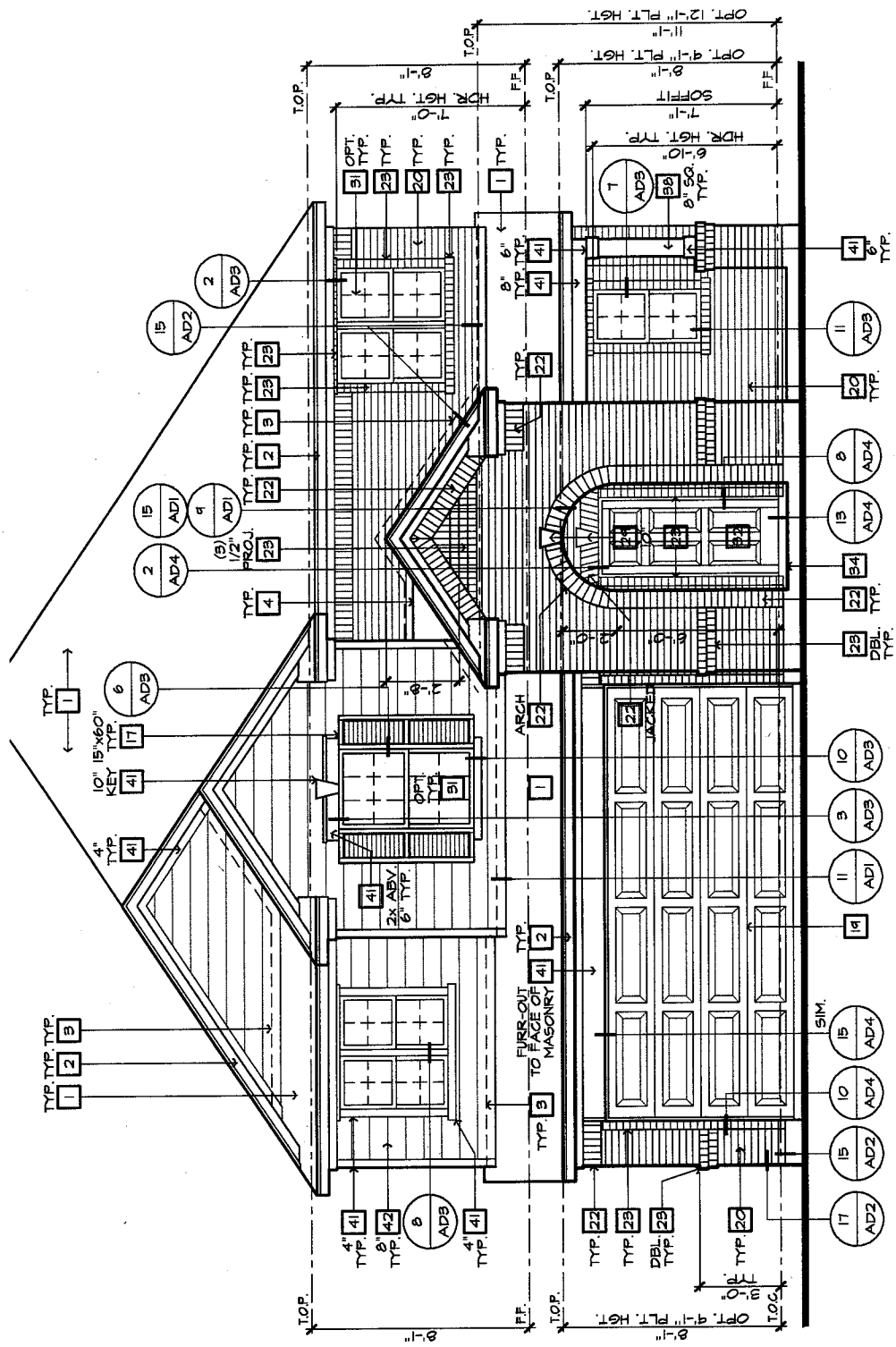
- 30-in. x 60-in. **Sterling® All Pro® Vikrell®** Tub with 13-in. x 13-in. **Emser®** Daytona Tile Surround
- Pressure Balancing Shower Valves
- Solid Surface Countertop and 4-in. Backsplash
- Extended Vanity with Knee Space
- One Porcelain Undermount Vanity Bowl
- Chrome Hardware and Single Lever Chrome Finish **Moen® WaterSense®** Faucet
- **San Antonio** Birch Cabinets in Two Finishes

## Landscaping

- Fully Sodded Front and Side Yards to Fence
- Professionally Designed Landscape – Front Yard
- Assorted Shrubs (per plan in 3, 15 and 20-gal. sizes)
- One 30-gal. Oak Tree

Rev 8/6/16

2016 KB Home. All rights reserved. KB Home reserves the right to change floorplan specifications, prices, financing terms and availability without prior notice and may vary by neighborhood, homesite location and home series. Special wall and window treatments, custom paint colors, photographs, upgraded floor coverings, furniture, landscaping, custom designed walks and patio treatments and many other items featured in and around the model homes are decorator suggested, and are not included in the purchase price and are not available for purchase from KB Home. Windows, columns, porches and posts may vary per elevation and predetermined homesite. Renderings and floor plans are artist conception; square footage is approximate and based upon design; area may vary according to construction; landscaping shown is not standard. See Built to Order options and upgrades offered at KB Home Studio. All options/ upgrades require additional charges, may require ordering at predetermined stages of construction and are subject to change/ discontinuation anytime by KB Home. BB Home is not a costume homebuilder and Built to Order only applies to options referenced. See sales representative for details. Equal Housing Opportunity. 



FRONT ELEVATION 'D'