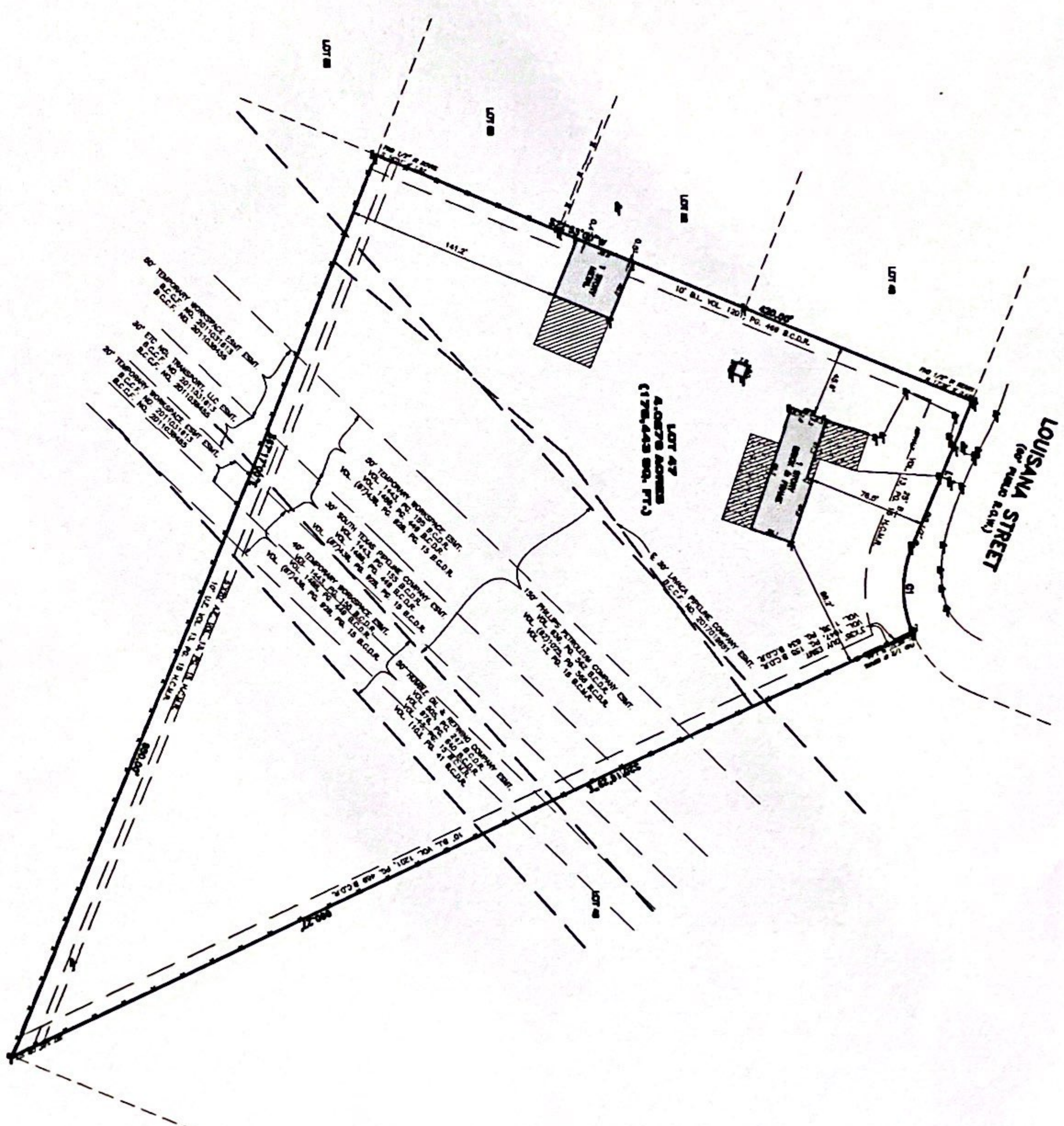


GRAPHIC SCALE
1" = 40'

- 1. ALUMINUM ELECTRIC
- 2. BRASS ELECTRIC
- 3. BRASS ELECTRIC
- 4. BRASS ELECTRIC
- 5. BRASS ELECTRIC
- 6. BRASS ELECTRIC
- 7. BRASS ELECTRIC
- 8. BRASS ELECTRIC
- 9. BRASS ELECTRIC
- 10. BRASS ELECTRIC
- 11. BRASS ELECTRIC
- 12. BRASS ELECTRIC
- 13. BRASS ELECTRIC
- 14. BRASS ELECTRIC
- 15. BRASS ELECTRIC
- 16. BRASS ELECTRIC
- 17. BRASS ELECTRIC
- 18. BRASS ELECTRIC
- 19. BRASS ELECTRIC
- 20. BRASS ELECTRIC
- 21. BRASS ELECTRIC
- 22. BRASS ELECTRIC
- 23. BRASS ELECTRIC
- 24. BRASS ELECTRIC
- 25. BRASS ELECTRIC
- 26. BRASS ELECTRIC
- 27. BRASS ELECTRIC
- 28. BRASS ELECTRIC
- 29. BRASS ELECTRIC
- 30. BRASS ELECTRIC
- 31. BRASS ELECTRIC
- 32. BRASS ELECTRIC
- 33. BRASS ELECTRIC
- 34. BRASS ELECTRIC
- 35. BRASS ELECTRIC
- 36. BRASS ELECTRIC
- 37. BRASS ELECTRIC
- 38. BRASS ELECTRIC
- 39. BRASS ELECTRIC
- 40. BRASS ELECTRIC
- 41. BRASS ELECTRIC
- 42. BRASS ELECTRIC
- 43. BRASS ELECTRIC
- 44. BRASS ELECTRIC
- 45. BRASS ELECTRIC
- 46. BRASS ELECTRIC
- 47. BRASS ELECTRIC
- 48. BRASS ELECTRIC
- 49. BRASS ELECTRIC
- 50. BRASS ELECTRIC
- 51. BRASS ELECTRIC
- 52. BRASS ELECTRIC
- 53. BRASS ELECTRIC
- 54. BRASS ELECTRIC
- 55. BRASS ELECTRIC
- 56. BRASS ELECTRIC
- 57. BRASS ELECTRIC
- 58. BRASS ELECTRIC
- 59. BRASS ELECTRIC
- 60. BRASS ELECTRIC
- 61. BRASS ELECTRIC
- 62. BRASS ELECTRIC
- 63. BRASS ELECTRIC
- 64. BRASS ELECTRIC
- 65. BRASS ELECTRIC
- 66. BRASS ELECTRIC
- 67. BRASS ELECTRIC
- 68. BRASS ELECTRIC
- 69. BRASS ELECTRIC
- 70. BRASS ELECTRIC
- 71. BRASS ELECTRIC
- 72. BRASS ELECTRIC
- 73. BRASS ELECTRIC
- 74. BRASS ELECTRIC
- 75. BRASS ELECTRIC
- 76. BRASS ELECTRIC
- 77. BRASS ELECTRIC
- 78. BRASS ELECTRIC
- 79. BRASS ELECTRIC
- 80. BRASS ELECTRIC
- 81. BRASS ELECTRIC
- 82. BRASS ELECTRIC
- 83. BRASS ELECTRIC
- 84. BRASS ELECTRIC
- 85. BRASS ELECTRIC
- 86. BRASS ELECTRIC
- 87. BRASS ELECTRIC
- 88. BRASS ELECTRIC
- 89. BRASS ELECTRIC
- 90. BRASS ELECTRIC
- 91. BRASS ELECTRIC
- 92. BRASS ELECTRIC
- 93. BRASS ELECTRIC
- 94. BRASS ELECTRIC
- 95. BRASS ELECTRIC
- 96. BRASS ELECTRIC
- 97. BRASS ELECTRIC
- 98. BRASS ELECTRIC
- 99. BRASS ELECTRIC
- 100. BRASS ELECTRIC



THIS SURVEY IS THE SOLE PROPERTY OF THE SURVEYOR AND IS NOT TO BE REPRODUCED OR TRANSMITTED IN ANY FORM OR BY ANY MEANS, ELECTRONIC OR MECHANICAL, INCLUDING PHOTOCOPYING, RECORDING, OR BY ANY INFORMATION STORAGE AND RETRIEVAL SYSTEM, WITHOUT THE WRITTEN PERMISSION OF THE SURVEYOR. THE SURVEYOR'S LIABILITY IS LIMITED TO THE PROFESSIONAL SERVICES PROVIDED AND DOES NOT INCLUDE THE CONSTRUCTION OF THE PROJECT OR THE ACCURACY OF THE DATA PROVIDED BY THE CLIENT. THE SURVEYOR'S LIABILITY IS LIMITED TO THE PROFESSIONAL SERVICES PROVIDED AND DOES NOT INCLUDE THE CONSTRUCTION OF THE PROJECT OR THE ACCURACY OF THE DATA PROVIDED BY THE CLIENT.

PLACED NOTES:
 ALL NOTES ARE TO BE PLACED ON THE SURVEY AS SHOWN ON THE ATTACHED SHEETS. THE SURVEYOR'S LIABILITY IS LIMITED TO THE PROFESSIONAL SERVICES PROVIDED AND DOES NOT INCLUDE THE CONSTRUCTION OF THE PROJECT OR THE ACCURACY OF THE DATA PROVIDED BY THE CLIENT.

[Signature]
 Surveyor's Name and Title



SURVEY OF
 LOT FORTY-SEVEN (47) BAYVIEW PLAZA, CITY OF BAYVIEW, BRANSON COUNTY, TEXAS, ACCORDING TO THE SURVEY RECORDED IN VOLUME 13, PAGE 18 OF THE PUBLIC RECORDS OF BRANSON COUNTY, TEXAS

ADJUTANT: JIMMY L. HARRIS

JOE NO. 1817-18

SOUTH TEXAS SURVEYING ASSOCIATES, INC.
 11281 Richmond Ave. Bldg 2, Suite 201, Ft. Worth, Texas 76044
 281-558-8318 FAX 281-558-8331

JOE NO. 1817-18

LINE	LENGTH	BEARING	AREA	PERIMETER
1	100.00	N 00° 00' 00" E	0.00	100.00
2	100.00	E 00° 00' 00" S	0.00	100.00
3	100.00	S 00° 00' 00" W	0.00	100.00
4	100.00	W 00° 00' 00" N	0.00	100.00
5	100.00	N 00° 00' 00" E	0.00	100.00