



Bracero Residence
20606 Chatfield Bend Way, Katy, TX 77449

Solar

Quantity: 24 Panels
System Size: Medium (7.56 kW)
Est. Annual Production: 9775 kWh

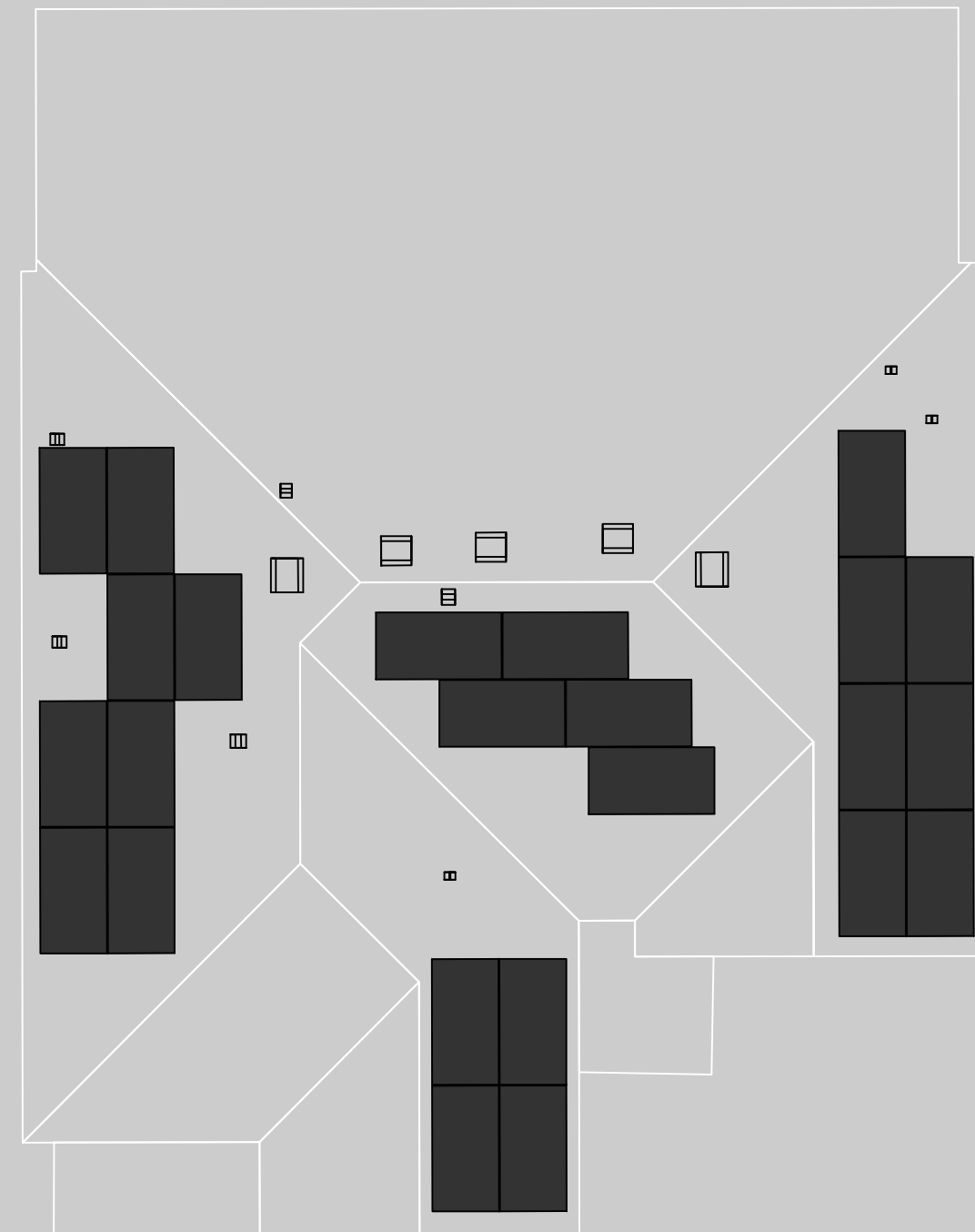
Powerwall

Quantity: 2 Powerwalls
Back up loads to be determined when electrical photos are submitted.

Equipment Location

Your solar inverter(s), Energy Gateway, Powerwall(s) and any additional equipment will be installed near your utility electric meter.

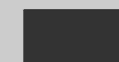
At the beginning of installation, the Tesla crew lead will discuss with you the exact location based on your preference and install feasibility.



Front Of House

LEGEND

Solar Panels



Rooftop vents, skylights, chimneys, and HVAC





SolarEdge Single Phase Inverters

for North America

SE3000H-US / SE3800H-US / SE5000H-US / SE6000H-US / SE7600H-US / SE10000H-US / SE11400H-US



INVERTERS

Optimized installation with HD-Wave technology

- Specifically designed to work with power optimizers
- Record-breaking efficiency
- Fixed voltage inverter for longer strings
- Integrated arc fault protection and rapid shutdown for NEC 2014 and 2017, per article 690.11 and 690.12
- UL1741 SA certified, for CPUC Rule 21 grid compliance
- Extremely small
- High reliability without any electrolytic capacitors
- Built-in module-level monitoring
- Outdoor and indoor installation
- Optional: Revenue grade data, ANSI C12.20 Class 0.5 (0.5% accuracy)
- Simple configuration and commissioning with smartphone app and built in Wi-Fi (SE10000H-US, SE11400H-US)



USA-CANADA-GERMANY-UK-ITALY-THE NETHERLANDS-JAPAN-CHINA-AUSTRALIA-ISRAEL-FRANCE-BELGIUM-TURKEY-INDIA-BULGARIA-ROMANIA-HUNGARY-SWEDEN-SOUTH AFRICA-POLAND-CZECH REPUBLIC

www.solaredge.us



Single Phase Inverters for North America

SE3000H-US / SE3800H-US / SE5000H-US / SE6000H-US / SE7600H-US / SE10000H-US / SE11400H-US

	SE3000H-US	SE3800H-US	SE5000H-US	SE6000H-US	SE7600H-US	SE10000H-US	SE11400H-US		
OUTPUT									
Rated AC Power Output	3000	3800 @240V 3300 @208V	5000	6000	7600	10000	11400	VA	
Max. AC Power Output	3000	3800 @240V 3300 @208V	5000	6000	7600	10000	11400	VA	
AC Output Voltage Min.-Nom.-Max. (183 - 208 - 229)	-	✓	✓	-	-	-	-	Vac	
AC Output Voltage Min.-Nom.-Max. (211 - 240 - 264)	✓	✓	✓	✓	✓	✓	✓	Vac	
AC Frequency (Nominal)	59.3 - 60 - 60.5 ⁽¹⁾							Hz	
Maximum Continuous Output Current 208V	-	16	24	-	-	-	-	A	
Maximum Continuous Output Current 240V	12.5	16	21	25	32	42	47.5	A	
GFDI Threshold	1							A	
Utility Monitoring, Islanding Protection, Country Configurable Thresholds	Yes								
INPUT									
Maximum DC Power	4650	5900	7750	9300	11800	15500	17670	W	
Transformer-less, Ungrounded	Yes								
Maximum Input Voltage	480							Vdc	
Nominal DC Input Voltage	380							Vdc	
Maximum Input Current 208V	-	9	13.5	-	-	400	-	Adc	
Maximum Input Current 240V	8.5	10.5	13.5	16.5	20	27	30.5	Adc	
Max. Input Short Circuit Current	45							Adc	
Reverse-Polarity Protection	Yes								
Ground-Fault Isolation Detection	600k Ω Sensitivity								
Maximum Inverter Efficiency	99						99.2	%	
CEC Weighted Efficiency								99	%
Nighttime Power Consumption								< 2.5	W
ADDITIONAL FEATURES									
Supported Communication	RS485, Ethernet, ZigBee (optional), Cellular (optional)								
Interfaces	Revenue Grade Data, ANSI C12.20							Optional ⁽²⁾	
Rapid Shutdown - NEC 2014 and 2017 690.12	Automatic Rapid Shutdown upon AC Grid Disconnect								
STANDARD COMPLIANCE									
Safety	UL1741, UL1741 SA, UL1699B, CSA C22.2, Canadian AFCI according to T.I.L. M-07								
Grid Connection Standards	IEEE1547, Rule 21, Rule 14 (HI)								
Emissions	FCC Part 15 Class B								
INSTALLATION SPECIFICATIONS									
AC Output Conduit Size / AWG Range	3/4" minimum / 20-4 AWG								
DC Input Conduit Size / # of Strings / AWG Range	3/4" minimum / 1-2 strings / 14-6 AWG					3/4" minimum / 1-3 strings / 14-6 AWG			
Dimensions with Safety Switch (HxWxD)	17.7 x 14.6 x 6.8 / 450 x 370 x 174					21.3 x 14.6 x 7.7 / 540 x 370 x 195	21.3 x 14.6 x 7.3 / 540 x 370 x 185	in / mm	
Weight with Safety Switch	22 / 10	25.1 / 11.4	26.2 / 11.9	38.8 / 17.6	40.1 / 18.2			lb / kg	
Noise	< 25							< 50	dB(A)
Cooling	Natural Convection				Natural convection and internal fan (user replaceable)				
Operating Temperature Range	-13 to +140 / -25 to +60 ⁽⁴⁾ (-40°F / -40°C option) ⁽⁵⁾							°F / °C	
Protection Rating	NEMA 3R (Inverter with Safety Switch)								

⁽¹⁾ For other regional settings please contact SolarEdge support
⁽²⁾ Revenue grade inverter P/N: SExxxxH-US000NCC2
⁽³⁾ For power de-rating information refer to: <https://www.solaredge.com/sites/default/files/se-temperature-derating-note-na.pdf>
⁽⁴⁾ -40 version P/N: SExxxxH-US000NNU4



© SolarEdge Technologies, Inc. All rights reserved. SOLAREEDGE, the SolarEdge logo, OPTIMIZED BY SOLAREEDGE are trademarks or registered trademarks of SolarEdge Technologies, Inc. All other trademarks mentioned herein are trademarks of their respective owners. Date: 11/2017/V01/ENG NAM. Subject to change without notice.



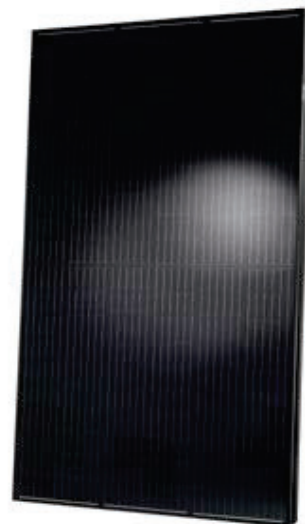
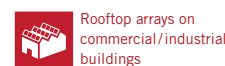
Q.PEAK DUO BLK-G5/SC 310-320

Q.ANTUM SOLAR MODULE

The new **Q.PEAK DUO BLK-G5/SC** solar module from Q CELLS impresses thanks to innovative **Q.ANTUM DUO** Technology, which enables particularly high performance on a small surface, and a black Zep Compatible™ frame design for improved aesthetics, easy installation and increased safety. Q.ANTUM's world-record-holding cell concept has now been combined with state-of-the-art circuitry half cells and a six-busbar design, thus achieving outstanding performance under real conditions - both with low-intensity solar radiation as well as on hot, clear summer days.

- Q.ANTUM TECHNOLOGY: LOW LEVELIZED COST OF ELECTRICITY**
Higher yield per surface area, lower BOS costs, higher power classes, and an efficiency rate of up to 19.3%.
- INNOVATIVE ALL-WEATHER TECHNOLOGY**
Optimal yields, whatever the weather with excellent low-light and temperature behavior.
- ENDURING HIGH PERFORMANCE**
Long-term yield security with Anti LID and Anti PID Technology¹, Hot-Spot Protect and Traceable Quality Tra.Q™.
- EXTREME WEATHER RATING**
High-tech aluminum alloy frame, certified for high snow (5400Pa) and wind loads (4000Pa) regarding IEC.
- A RELIABLE INVESTMENT**
Inclusive 12-year product warranty and 25-year linear performance guarantee².
- STATE OF THE ART MODULE TECHNOLOGY**
Q.ANTUM DUO combines cutting edge cell separation and innovative wiring with Q.ANTUM Technology.

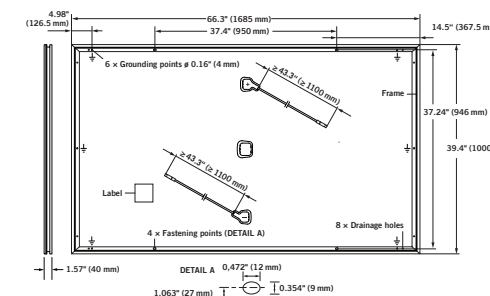
THE IDEAL SOLUTION FOR:



¹ APT test conditions according to IEC/TS 62804-1:2015, method B (-1500V, 168 h)
² See data sheet on rear for further information.

MECHANICAL SPECIFICATION

Format	66.3 in × 39.4 in × 1.57 in (including frame) (1685 mm × 1000 mm × 40 mm)
Weight	44.5 lbs (20.2 kg)
Front Cover	0.13 in (3.2 mm) thermally pre-stressed glass with anti-reflection technology
Back Cover	Composite film
Frame	Black anodized aluminum
Cell	6 × 20 monocrystalline Q.ANTUM solar half-cells
Junction box	2.76-3.35 in × 1.97-2.76 in × 0.51-0.83 in (70-85 mm × 50-70 mm × 13-21 mm), decentralized, IP67
Cable	4 mm ² Solar cable; (+) ≥ 43.3 in (1100 mm), (-) ≥ 43.3 in (1100 mm)
Connector	Multi-Contact MC4, IP68

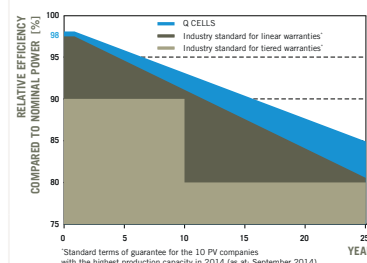


ELECTRICAL CHARACTERISTICS

POWER CLASS	310	315	320		
MINIMUM PERFORMANCE AT STANDARD TEST CONDITIONS, STC ¹ (POWER TOLERANCE +5W / -0W)					
Minimum	Power at MPP ²	P _{MPP} [W]	310	315	320
	Short Circuit Current ³	I _{SC} [A]	9.83	9.89	9.94
	Open Circuit Voltage ³	V _{OC} [V]	40.02	40.29	40.56
	Current at MPP ³	I _{MPP} [A]	9.36	9.41	9.47
	Voltage at MPP ³	V _{MPP} [V]	33.12	33.46	33.80
Efficiency ²	η [%]	≥ 18.4	≥ 18.7	≥ 19.0	
MINIMUM PERFORMANCE AT NORMAL OPERATING CONDITIONS, NOC ³					
Minimum	Power at MPP ²	P _{MPP} [W]	229.7	233.5	237.2
	Short Circuit Current ³	I _{SC} [A]	7.93	7.97	8.02
	Open Circuit Voltage ³	V _{OC} [V]	37.43	37.69	37.94
	Current at MPP ³	I _{MPP} [A]	7.36	7.41	7.45
	Voltage at MPP ³	V _{MPP} [V]	31.20	31.52	31.84

¹ 1000 W/m², 25 °C, spectrum AM 1.5G ² Measurement tolerances STC ± 3%; NOC ± 5% ³ 800 W/m², NOCT, spectrum AM 1.5G * typical values, actual values may differ

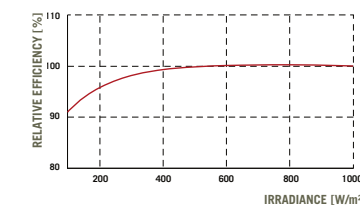
Q CELLS PERFORMANCE WARRANTY



At least 98% of nominal power during first year. Thereafter max. 0.54% degradation per year. At least 93.1% of nominal power up to 10 years. At least 85% of nominal power up to 25 years.

All data within measurement tolerances. Full warranties in accordance with the warranty terms of the Q CELLS sales organization of your respective country.

PERFORMANCE AT LOW IRRADIANCE



Typical module performance under low irradiance conditions in comparison to STC conditions (25 °C, 1000 W/m²).

TEMPERATURE COEFFICIENTS

Temperature Coefficient of I _{SC}	α [%/K]	+0.04	Temperature Coefficient of V _{OC}	β [%/K]	-0.28
Temperature Coefficient of P _{MPP}	γ [%/K]	-0.37	Normal Operating Cell Temperature	NOCT [°F]	113 ± 5.4 (45 ± 3 °C)

PROPERTIES FOR SYSTEM DESIGN

Maximum System Voltage V _{sys}	[V]	1000 (IEC) / 1000 (UL)	Safety Class	II
Maximum Series Fuse Rating	[A DC]	20	Fire Rating	C (IEC) / TYPE 1 (UL)
Design load, push (UL) ²	[lbs/ft ²]	50 (2400 Pa)	Permitted module temperature on continuous duty	-40 °F up to +185 °F (-40 °C up to +85 °C)
Design load, pull (UL) ²	[lbs/ft ²]	50 (2400 Pa)		² see installation manual

QUALIFICATIONS AND CERTIFICATES

UL 1703; CE-compliant; IEC 61215 (Ed. 2); IEC 61730 (Ed. 1), application class A



PACKAGING INFORMATION

Number of Modules per Pallet	26
Number of Pallets per 53' Trailer	32
Number of Pallets per 40' High Cube Container	26
Pallet Dimensions (L × W × H)	69.3 in × 45.3 in × 46.9 in (1760 mm × 1150 mm × 1190 mm)
Pallet Weight	1268 lbs (575 kg)

NOTE: Installation instructions must be followed. See the installation and operating manual or contact our technical service department for further information on approved installation and use of this product.

Hanwha Q CELLS America Inc.
300 Spectrum Center Drive, Suite 1250, Irvine, CA 92618, USA | TEL +1 949 748 59 96 | EMAIL inquiry@us.q-cells.com | WEB www.q-cells.us

Engineered in Germany



POWERWALL

Tesla Powerwall is a fully-integrated AC battery system for residential or light commercial use. Its rechargeable lithium-ion battery pack provides energy storage for solar self-consumption, time-based control, and backup.

Powerwall's electrical interface provides a simple connection to any home or building. Its revolutionary compact design achieves market-leading energy density and is easy to install, enabling owners to quickly realize the benefits of reliable, clean power.



PERFORMANCE SPECIFICATIONS

AC Voltage (Nominal)	120/240 V
Feed-In Type	Split Phase
Grid Frequency	60 Hz
Total Energy ¹	14 kWh
Usable Energy ¹	13.5 kWh
Real Power, max continuous ²	5 kW (charge and discharge)
Real Power, peak (10s, off-grid/backup) ²	7 kW (charge and discharge)
Apparent Power, max continuous	5.8 kVA (charge and discharge)
Apparent Power, peak (10s, off-grid/backup)	7.2 kVA (charge and discharge)
Maximum Supply Fault Current	10 kA
Maximum Output Fault Current	32 A
Overcurrent Protection Device	30 A
Imbalance for Split-Phase Loads	100%
Power Factor Output Range	+/- 1.0 adjustable
Power Factor Range (full-rated power)	+/- 0.85
Internal Battery DC Voltage	50 V
Round Trip Efficiency ^{1,3}	90%
Warranty	10 years

¹Values provided for 25°C (77°F), 3.3 kW charge/discharge power.

²In Backup mode, grid charge power is limited to 3.3 kW.

³AC to battery to AC, at beginning of life.

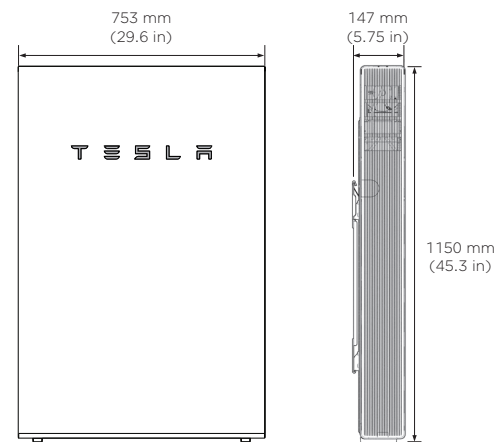
COMPLIANCE INFORMATION

Certifications	UL 1642, UL 1741, UL 1973, UL 9540, IEEE 1547, UN 38.3
Grid Connection	Worldwide Compatibility
Emissions	FCC Part 15 Class B, ICES 003
Environmental	RoHS Directive 2011/65/EU
Seismic	AC156, IEEE 693-2005 (high)

MECHANICAL SPECIFICATIONS

Dimensions ¹	1150 mm x 753 mm x 147 mm (45.3 in x 29.6 in x 5.75 in)
Weight ¹	114 kg (251.3 lbs)
Mounting options	Floor or wall mount

¹Dimensions and weight differ slightly if manufactured before March 2019. Contact Tesla for additional information.



ENVIRONMENTAL SPECIFICATIONS

Operating Temperature	-20°C to 50°C (-4°F to 122°F)
Recommended Temperature	0°C to 30°C (32°F to 86°F)
Operating Humidity (RH)	Up to 100%, condensing
Storage Conditions	-20°C to 30°C (-4°F to 86°F) Up to 95% RH, non-condensing State of Energy (SoE): 25% initial
Maximum Elevation	3000 m (9843 ft)
Environment	Indoor and outdoor rated
Enclosure Type	NEMA 3R
Ingress Rating	IP67 (Battery & Power Electronics) IP56 (Wiring Compartment)
Wet Location Rating	Yes
Noise Level @ 1m	< 40 dBA at 30°C (86°F)

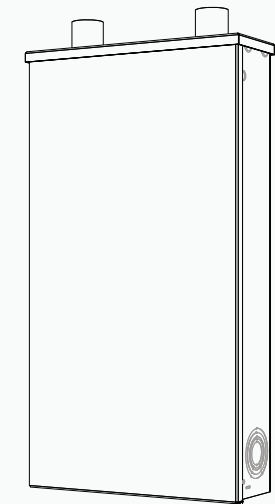
POWERWALL

Backup Gateway

The Backup Gateway for Tesla Powerwall provides energy management and monitoring for solar self-consumption, time-based control, and backup.

The Backup Gateway controls connection to the grid, automatically detecting outages and providing a seamless transition to backup power. When equipped with a circuit breaker, the Backup Gateway can be installed at the service entrance.

The Backup Gateway communicates directly with Powerwall, allowing you to monitor energy use and manage backup energy reserves from any mobile device with the Tesla app.



PERFORMANCE SPECIFICATIONS

AC Voltage (Nominal)	230 V, 120/240 V
Feed-In Type	Single & Split Phase
Grid Frequency	50 and 60 Hz
Disconnect Current	200 A
Maximum Input Short Circuit Current	10 kA
Overcurrent Protection Device ¹	100–200 A; Service Entrance Rated
Overvoltage Category	Category IV
AC Meter	Revenue grade (+/- 1%)
Connectivity	Ethernet, Cellular (3G) ² , Wi-Fi
User Interface	Tesla App
Operating Modes	Support for solar self-consumption, time-based control, and backup
Backup Operation	Automatic disconnect for seamless backup transition
Modularity	Supports up to 10 AC-coupled Powerwalls
Warranty	10 years

¹Circuit breaker required for installation at service entrance.

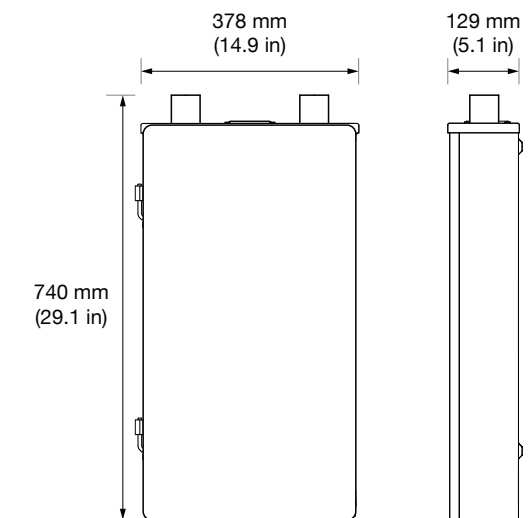
²Cellular connectivity subject to network operator service coverage and signal strength.

COMPLIANCE INFORMATION

Certifications	UL 1642, UL 1741, IEC 62109-1, CSA C22.2.107.1
Grid Connection	Worldwide Compatibility
Emissions	FCC Part 15 Class B, ICES 003, IEC 61000-6-3, EN 55024, EN 301489-1, EN 301489-7, EN 301489-17
Environmental	RoHS Directive 2011/65/EU, WEEE Directive 2012/19/EU, Battery Directive 2006/66/EC REACH Regulation
Seismic	AC156, IEEE 693-2005 (high)

MECHANICAL SPECIFICATIONS

Dimensions	740 mm x 378 mm x 129 mm (29.1 in x 14.9 in x 5.1 in)
Weight	16.4 kg (36 lbs)
Mounting options	Wall mount



ENVIRONMENTAL SPECIFICATIONS

Operating Temperature	-20°C to 50°C (-4°F to 122°F)
Operating Humidity (RH)	Up to 100%, condensing
Maximum Elevation	3000 m (9843 ft)
Environment	Indoor and outdoor rated
Enclosure Type	NEMA 3R
Ingress Rating	IP44



Customer Layout

Final Audit Report

2020-04-28

Created:	2020-04-14
By:	Tesla E-Sign (esignapi@tesla.com)
Status:	Delivered
Transaction ID:	CBJCHBCAABAAVmXM1mbRgEp_7lhChDojQ6DJAMMbjdL0

"Customer Layout" History

 Document created by Tesla E-Sign (esignapi@tesla.com)

2020-04-14 - 11:15:52 PM GMT- IP address: 209.133.79.5


 Waiting for delivery by Frank Bracero (frankjunior_7@msn.com)

2020-04-14 - 11:15:56 PM GMT

 Document receipt acknowledged by Frank Bracero (frankjunior_7@msn.com)

Acknowledgement receipt hosted by Tesla E-Sign (esignapi@tesla.com)

Receipt Acknowledgement Date: 2020-04-28 - 5:01:03 PM GMT - Time Source: server- IP address: 23.249.13.146

 2020-04-28 - 5:01:03 PM GMT