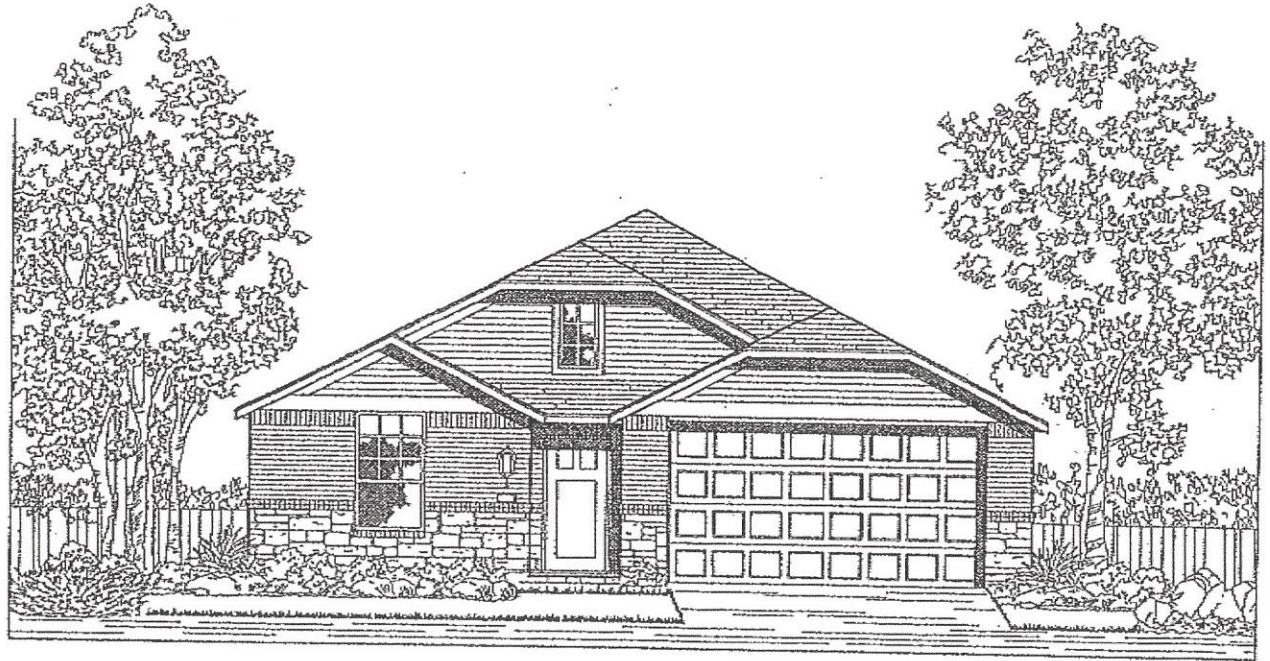


PLAN Dorchester (Elevation G)
Optional Stone Accent



© 2014 HD 1025

PLAN Dorchester (Elevation K)
Optional Stone Accent

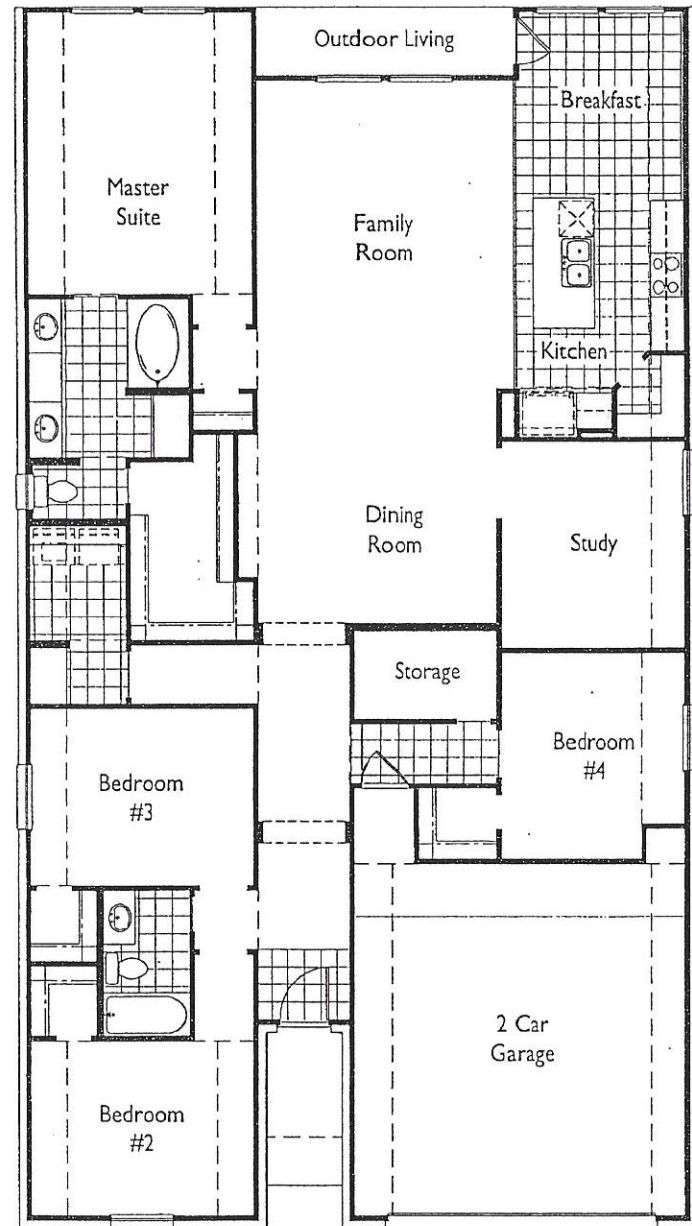
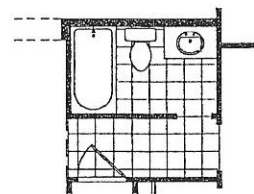
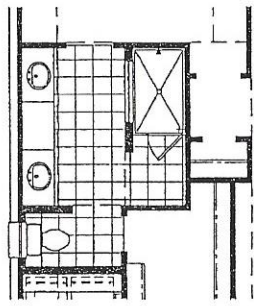
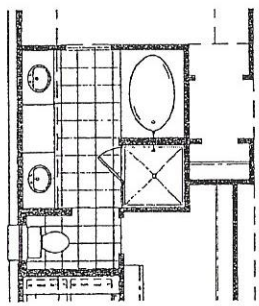
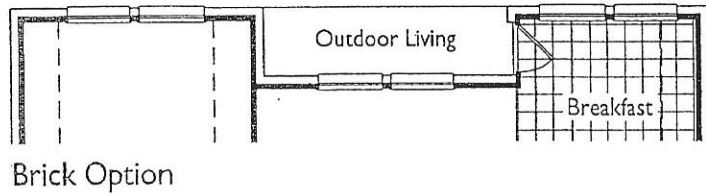
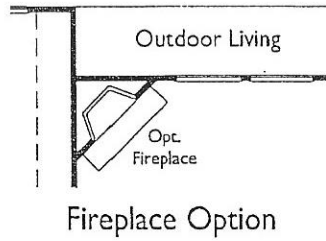
AK CM



© 2014 HD 1025

Prices, plans, specifications, square footage and availability subject to change without notice or prior obligation. Square footage is approximate and may vary upon elevations and/or options selected. Please see your Sales Counselor for more information.

Dorchester



Lower Level

This is a representation of a prototype plan. Prices, plans, specifications, square footage and availability subject to change without notice or prior obligation. Square footage is approximate and may vary upon elevations and/or options selected. Please see your Sales Counselor for more information.

DISTINCTIVE EXTERIOR FEATURES


- American made brick
- Landscaping package including fully sodded front yard
- 6' wood privacy fence with one gate
- White divided light windows on front of home
- Appealing entrance with 6'8" panel fiberglass front door
- Front coach light (per plan)
- Dimensional Owens Corning® fiberglass algae resistant roof shingles with a 30-year limited manufacturer's warranty
- Waterproof electrical plug box front and back
- Raised panel metal garage doors
- Front & rear frost proof hose bibs
- Seamless front guttering with down spouts

DRAMATIC INTERIOR FEATURES

- Ceramic tile in entry, kitchen, breakfast, utility room and all baths
- Rounded sheetrock corners (excluding windows)
- Textured walls and ceiling finishes
- Sherwin-Williams Painters Edge® interior paint throughout home
- Utility rooms include conveniently place shelf and rod
- Cambridge 2-panel interior doors
- Satin nickel lighting package
- Satin nickel Kwikset door hardware throughout home
- 5-blade ceiling fan in choice of one location
- Quality name brand nylon carpeting with 5 lb. 3/8" density pad
- Moen® chrome fixtures throughout (Posi-temp pressure balanced shower head with patented washerless cartridge and lifetime limited manufacturer's warranty)
- Pedestal sink in powder bath (per plan)
- Walk-in closet in Master Suite
- Sterling® soaker tub with ceramic tile surround in Master Bath
- Cultured marble vanity tops in all baths

GOURMET KITCHEN FEATURES

- 36" Poplar cabinets with concealed hinges, adjustable shelves and crown moulding
- 2 cm granite countertops with 18" gauge stainless steel undermount sink
- ½ Horsepower Insinkerator garbage disposal
- Black GE® gas or electric range
- Built-in GE® dishwasher with electronic controls and antibacterial cycle (NSF certified)
- Black GE® microwave with one-touch convenience and turntable
- Recessed can lighting (per plan)

 Prices, plans, specifications, square footage and availability subject to change without notice or prior obligation. Square footage is approximate and may vary upon elevations and/or options selected. Please see your Sales Consultant for more information.

QUALITY CONSTRUCTION

- Individually engineered 3,000 PSI foundation for each home
- Weyerhaeuser® Engineered I-beam 14" truss joist floor system on all two story plans with tongue and groove ¾" subfloor glued and screwed in place
- Flowguard Gold corrosion resistant plumbing system
- James Hardie® exterior siding, cornice, trim & fascia
- Energy saving rapid recovery natural gas water heater with one 50-gallon capacity or two 50-gallon capacity for homes with 3 or more baths
- Thermo ply sheathing placed behind brick for protection from outside elements
- 10-year structural home limited warranty
- Main sewer line inspection with camera for quality assurance
- All slabs pre-treated for termites
- Fresh air ventilation
- Low volatile organic compound (VOC) paint and finishes to improve indoor air quality
- Burgess third party inspectors check over 500 items in every homes

SECURITY AND WIRING FEATURES.

- Safelock by Kwikset deadbolts on exterior doors
- Smoke detectors interconnected with battery backup
- Carbon Monoxide detectors
- 18" Structured Wiring Cabinet
- 1x1 bundled outlet at two locations
- 1 additional CAT 5 phone location

ENERGY SAVING FEATURES

Green homes are built with the environment in mind. From energy and water efficiency, to reduced construction waste and the use of renewable materials, you can take pride in the fact that your home has less negative impact on the environment.

- Green Built Gulf Coast Program certified
- HERS energy rating on each home to determine energy efficiency
- LP® Tech Shield radiant barrier roof decking helps block heat from entering the attic
- RUUD® 14.5 SEER energy-saving HVAC with 5 year manufacturer's parts and 2 year labor warranty
- Honeywell Programmable Thermostat
- Effective leakage testing on all HVAC ductwork
- 4" media filter at one location for convenience
- Dual Paned thermal Low E glass high performance vinyl windows
- Extensive foam polysealant treatment to all exterior wall top and bottom plates, corners, door and window casings, plumbing penetrations and electrical outlets
- R-13 insulated exterior walls
- R-38 blown ceiling insulation with R-22 in sloped ceilings
- Energy efficient compact fluorescent lighting (CFL)

