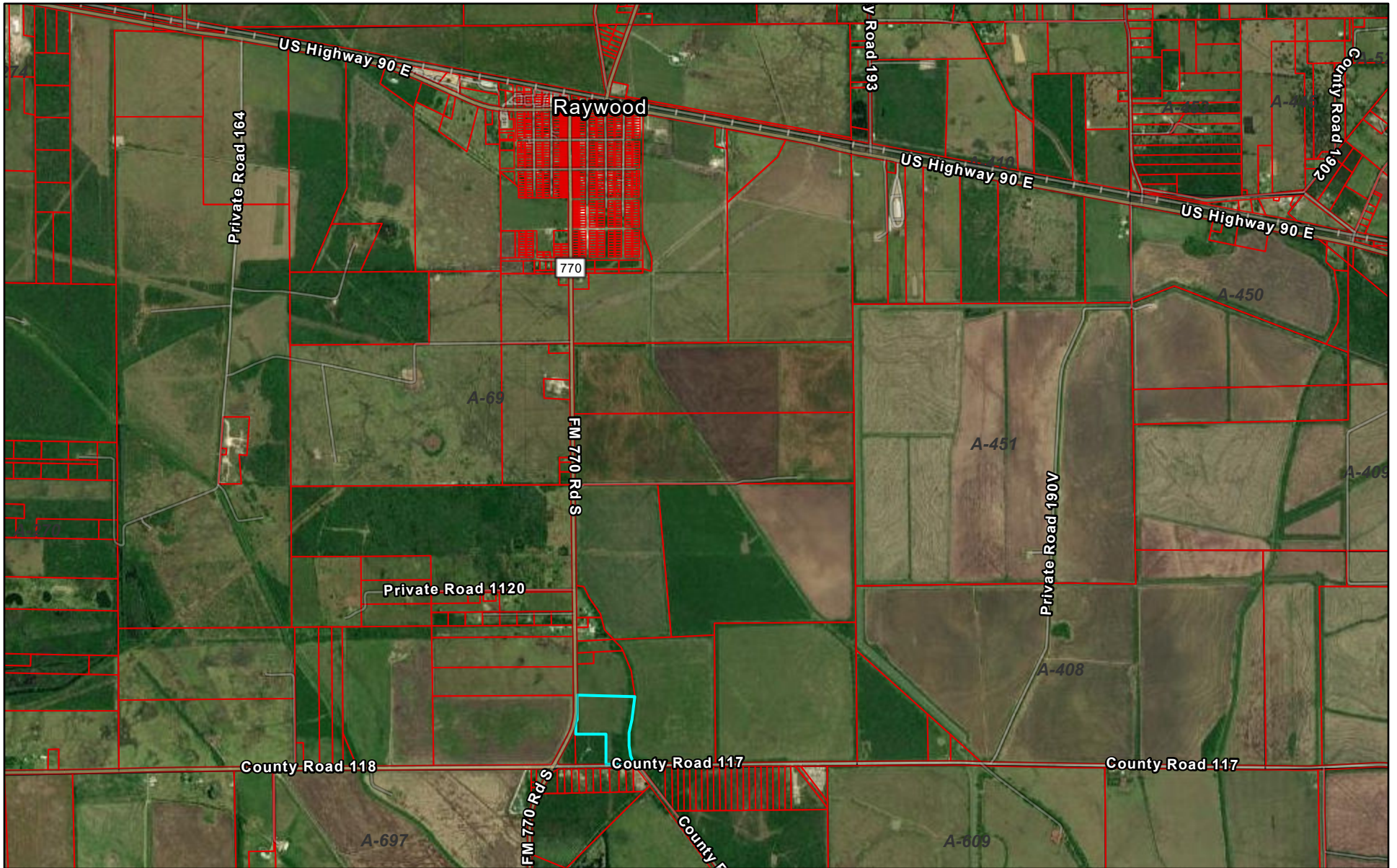



# Liberty CAD Web Map



7/28/2022, 9:05:33 AM

 Parcels

 Abstracts

1:36,112

0 0.28 0.55 1.1 mi

0 0.42 0.85 1.7 km

Source: Esri, DigitalGlobe, GeoEye, Earthstar Geographics, CNES/Airbus DS, USDA, USGS, AeroGRID, IGN, and the GIS User Community, Texas

Liberty County Appraisal District, BIS Consulting - [www.bisconsulting.com](http://www.bisconsulting.com)

Disclaimer: This product is for informational purposes only and has not been prepared for or be suitable for legal, engineering, or surveying purposes. It does not represent an on-the-ground survey and represents only the approximate relative location of boundaries.