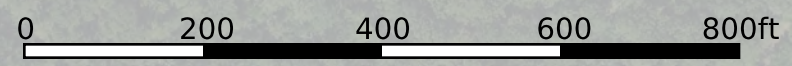
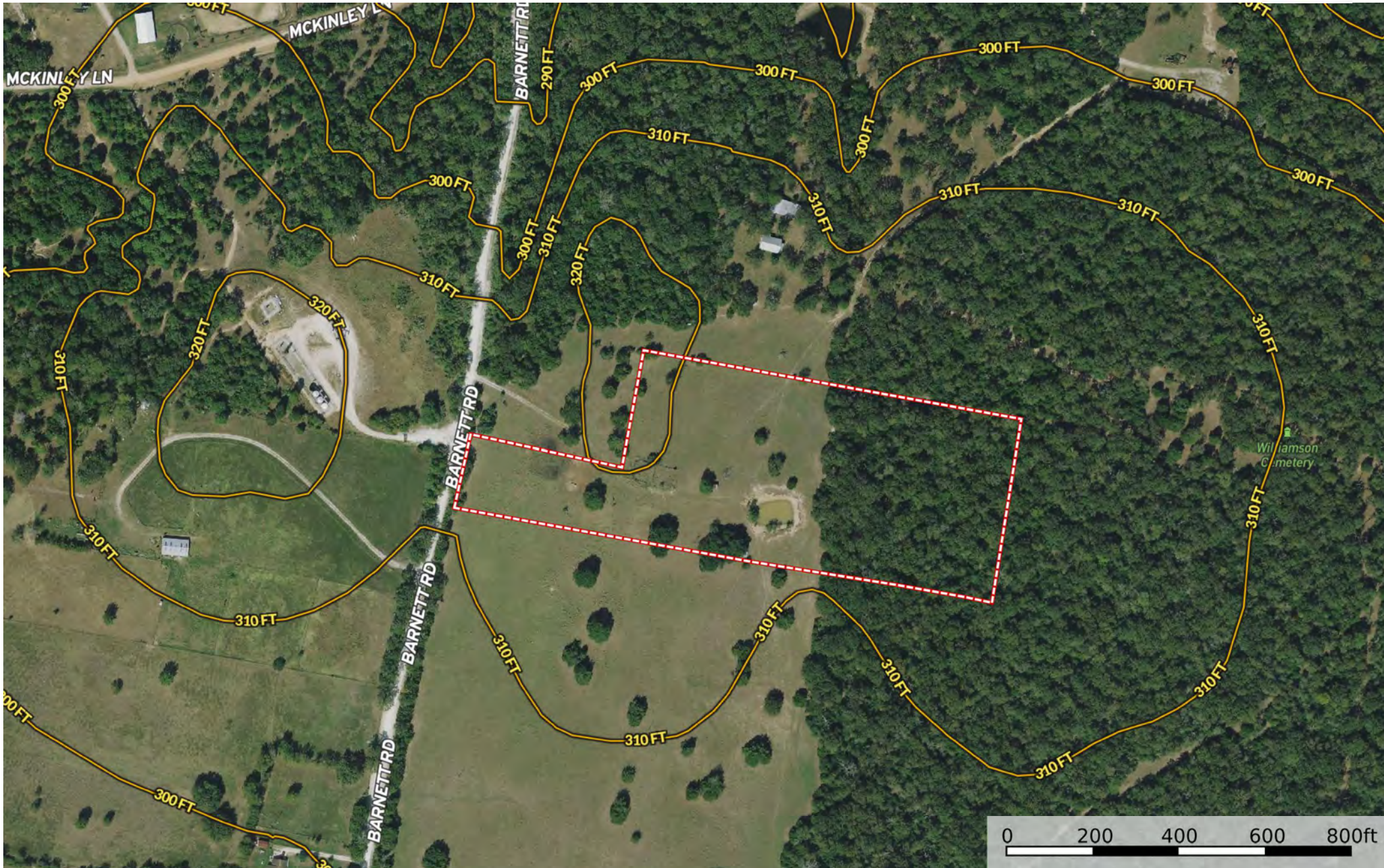


TBD Barnett Road, North Zulch, TX - 10.3 ACRES
Madison County, Texas, 10.3 AC +/-



 Boundary

TBD Barnett Road, North Zulch, TX - 10.3 ACRES
Madison County, Texas, 10.3 AC +/-



 Boundary

TBD Barnett Road, North Zulch, TX - 10.3 ACRES
Madison County, Texas, 10.3 AC +/-



 Boundary

Boundary 10.3 ac

SOIL CODE	SOIL DESCRIPTION	ACRES	%	CPI	NCCPI	CAP
ChB	Chazos loamy fine sand, 1 to 5 percent slopes	10.3	100.0	0	55	3e
TOTALS		10.3(*)	100%	-	55.0	3.0

(*) Total acres may differ in the second decimal compared to the sum of each acreage soil. This is due to a round error because we only show the acres of each soil with two decimal.

Capability Legend

Increased Limitations and Hazards

Decreased Adaptability and Freedom of Choice Users

Land, Capability



'Wild Life'

Forestry

Limited

Moderate

Intense

Limited

Moderate

Intense

Very Intense

Grazing Cultivation

(c) climatic limitations (e) susceptibility to erosion

(s) soil limitations within the rooting zone (w) excess of water