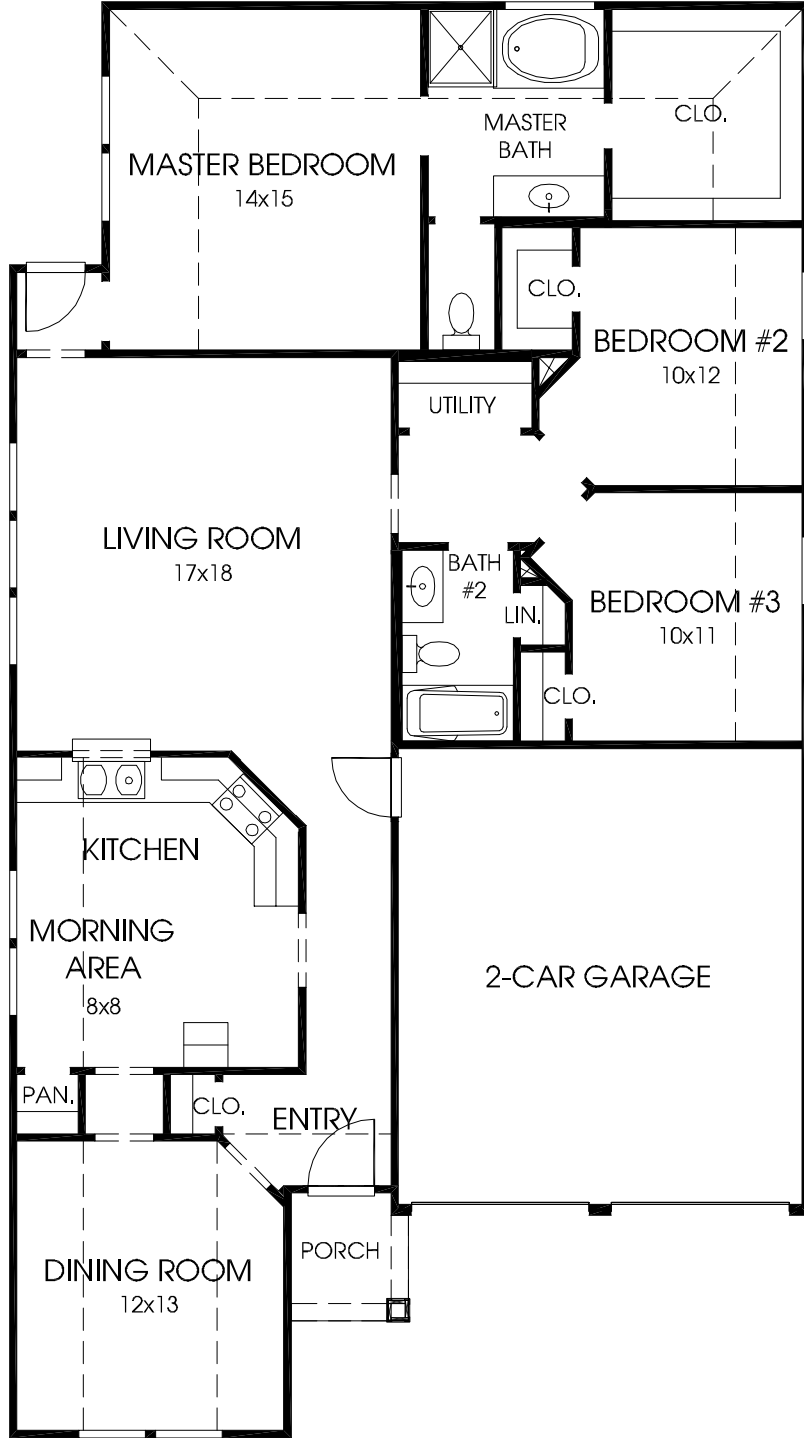


# DESIGNS

## Plan 1648

This home contains approximately 1,648 square feet and includes three bedrooms and two baths.



**OPTION 1**

LIVING ROOM  
17x18

This floor plan has the option for a corner fireplace in the living room.

**OPTION 2**

MASTER BATH

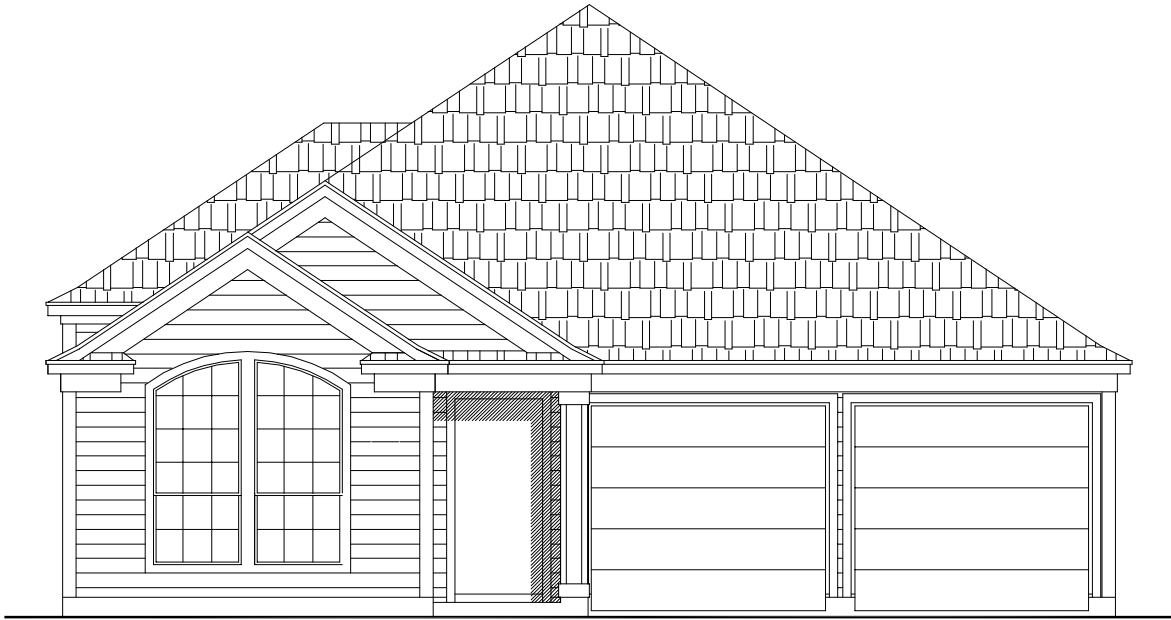
This floor plan has the option for a double vanity in the master bath.

*Note: The options shown on this brochure are available at an additional cost.*

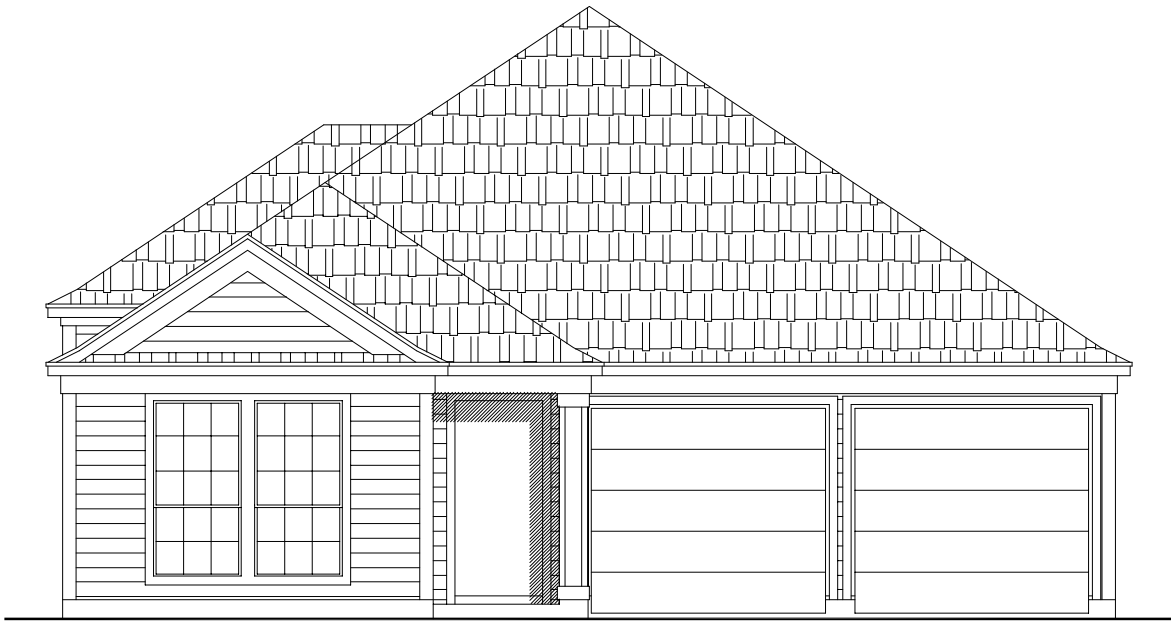
Not included: inside keyed deadbolt locks, refrigerators, furnishings, drapery, plants, decorator items and all other personal property being used in model homes. Builder reserves the right to make changes in the plans and specifications, and to substitute material of similar quality. Room dimensions indicate approximate inside area measurements.  
07/18/2008 - Perry Homes (HS-CL)



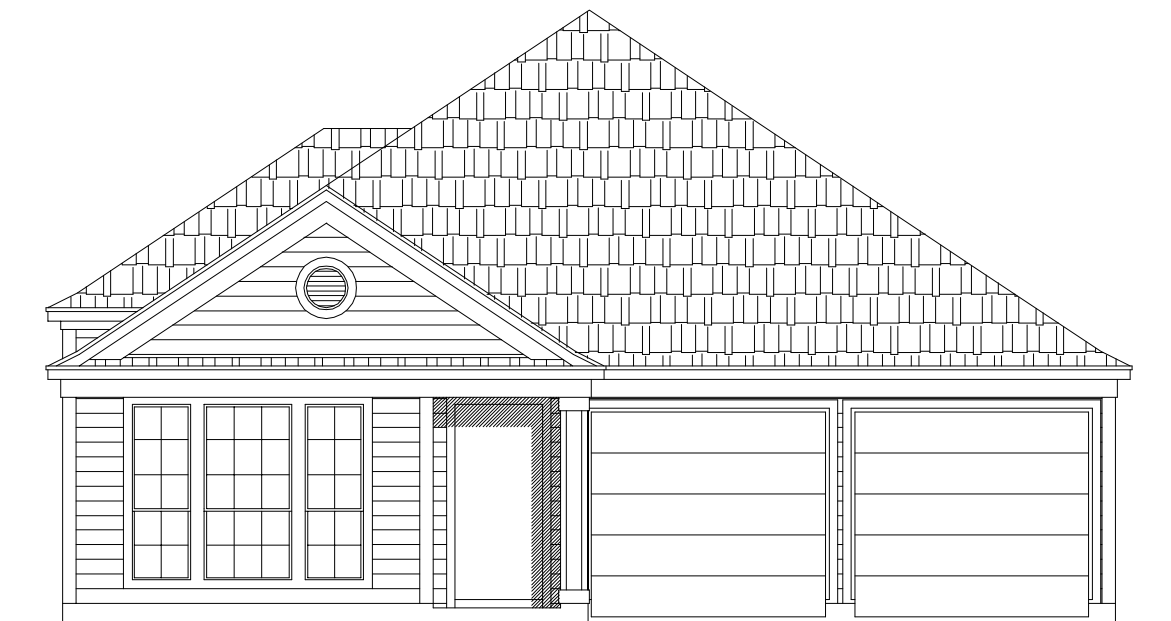
Some of the elevations shown may not be available in all communities.



**PLAN 1648 E-1**



**PLAN 1648 E-2**



**PLAN 1648 E-3**