

SUBJECT

New Hwy 290

FM 359

Waller County Land

Waller Spring Creek

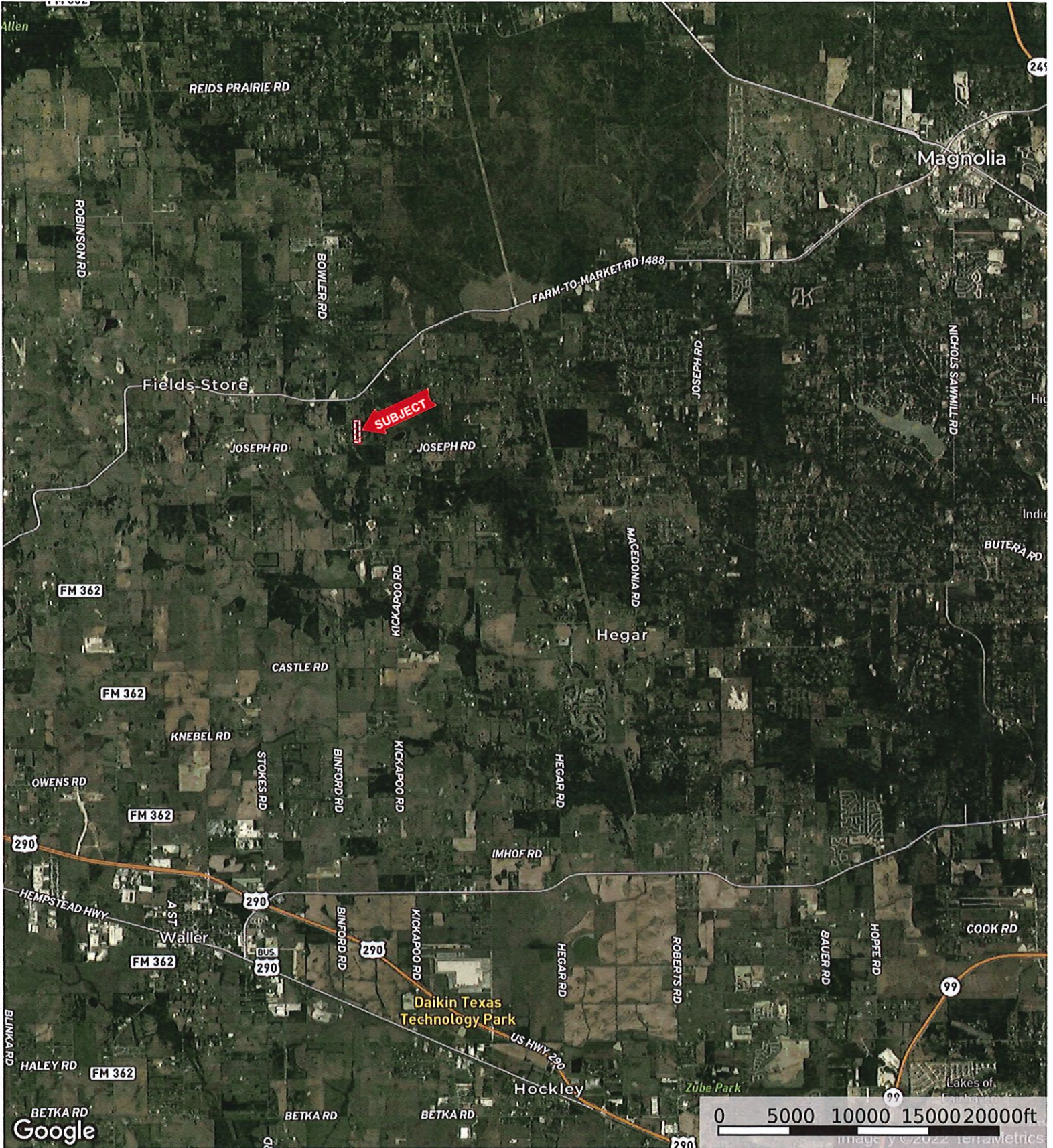
Cemetery

Mound Creek Subdivision

Katy Hockley

Waller County Harris Co

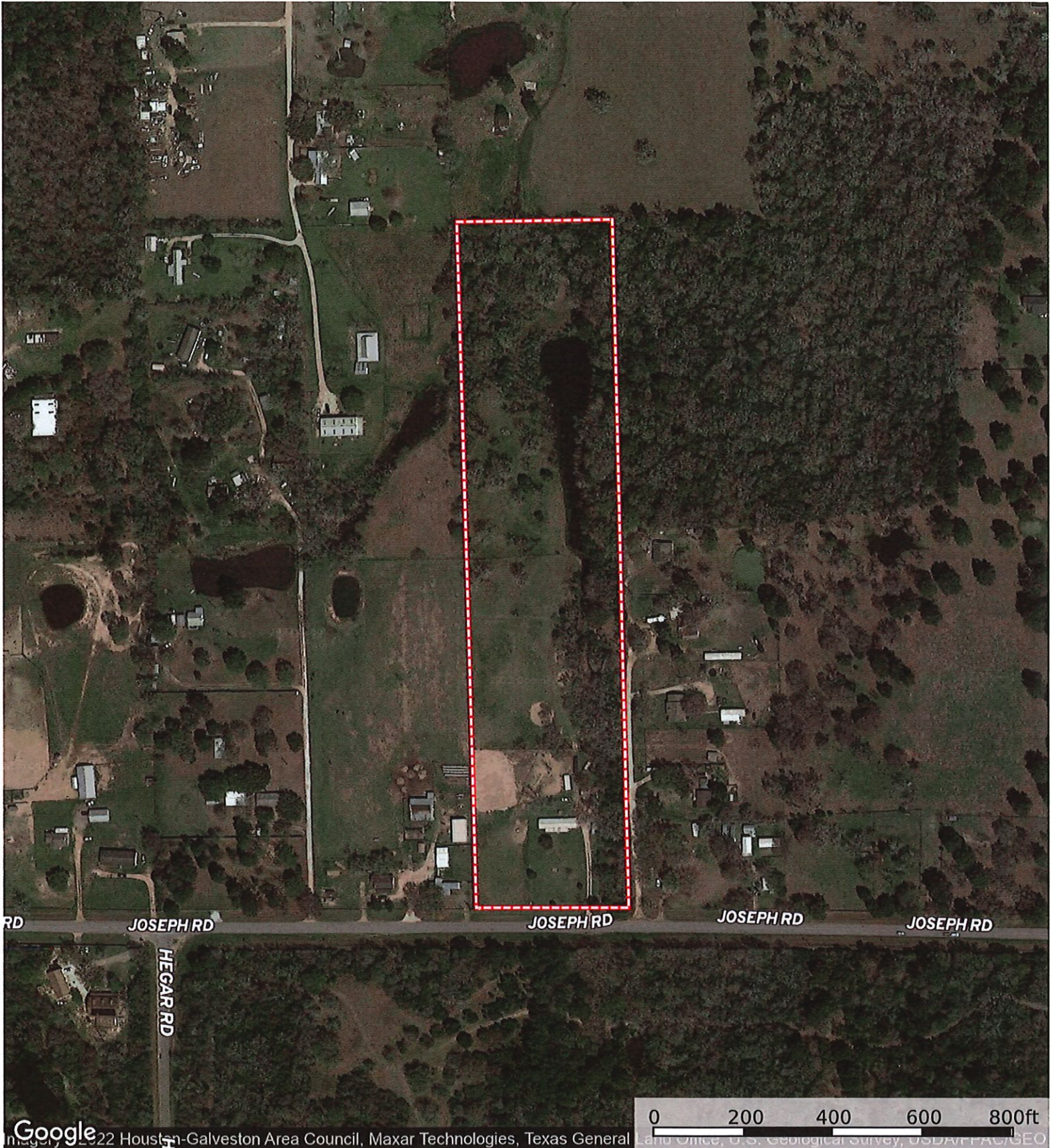
31404 Joseph Rd.
Waller County, Texas, 12.12 AC +/-



Boundary


M The information contained herein was obtained from sources deemed to be reliable. MapRight Services makes no warranties or guarantees as to the completeness or accuracy thereof.

31404 Joseph Rd.
Waller County, Texas, 12.12 AC +/-

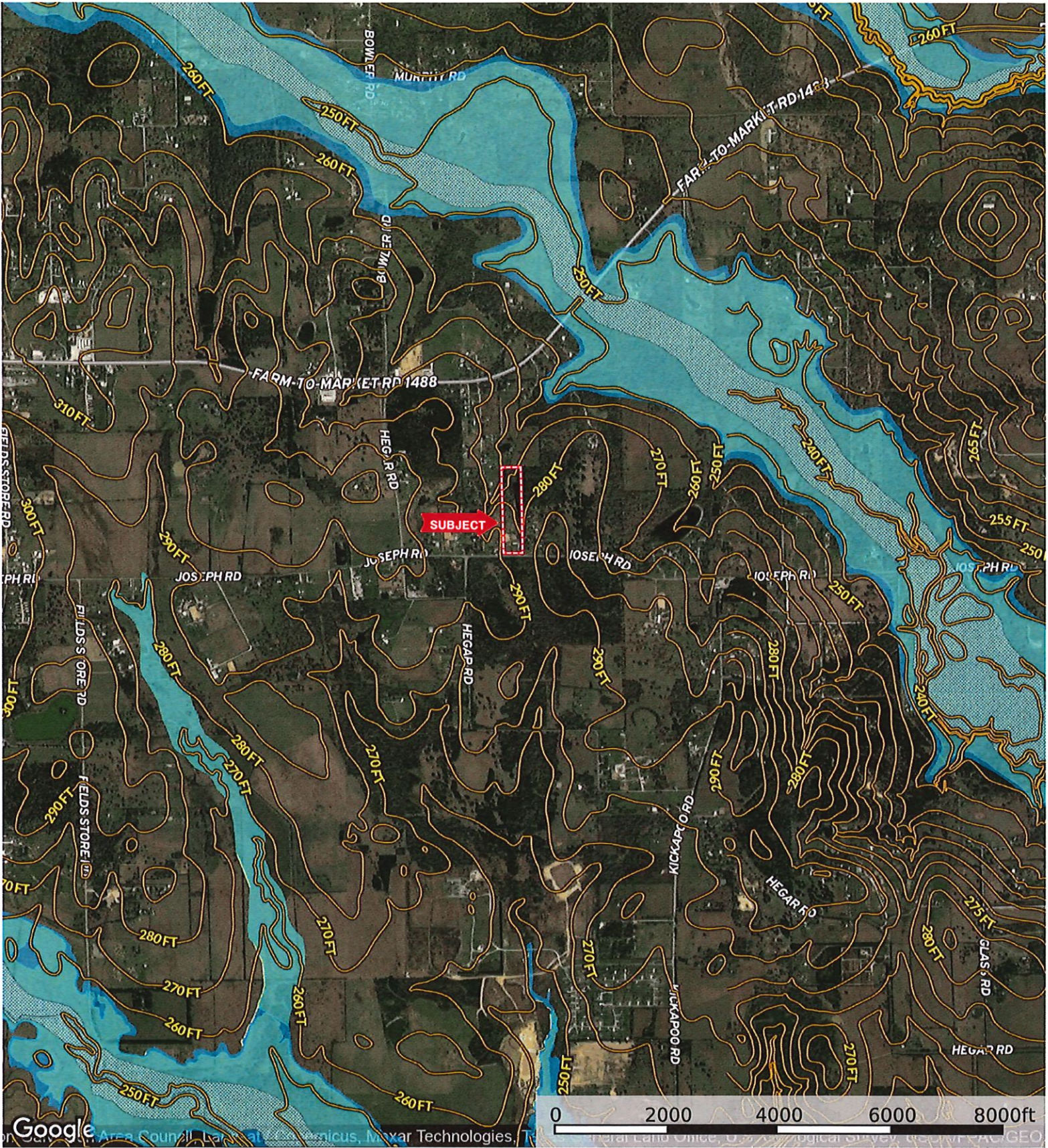


Google Earth imagery © 2022 Houston-Galveston Area Council, Maxar Technologies, Texas General Land Office, U.S. Geological Survey, USDA/FPA/USFS

 Boundary

 The information contained herein was obtained from sources deemed to be reliable. MapRight Services makes no warranties or guarantees as to the completeness or accuracy thereof.

31404 Joseph Rd.
Waller County, Texas, 12.12 AC +/-



- Boundary
- 100 Year Floodplain
- 500 Year Floodplain
- Floodway
- Special
- Unmapped/ Not Included