

-CREEK DATA-

LINE	BEARING	DISTANCE
L100	N82°12'38"W	299.13'
L101	N82°12'38"W	47.99'
L102	S58°24'17"W	201.22'
L103	S21°39'02"E	133.25'
L104	S65°53'54"W	138.24'
L105	S65°53'54"W	273.87'
L106	S19°38'05"W	140.78'
L107	S19°38'05"W	32.67'
L108	S40°17'17"W	157.16'
L109	S47°32'51"W	146.12'
L110	S20°47'42"E	164.10'
L111	S49°14'27"W	75.04'
L112	S08°38'32"E	204.49'

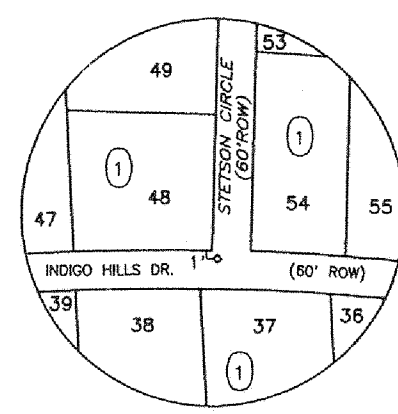
-BOUNDARY DATA-

LINE	BEARING	DISTANCE
L1	N01°05'46"E	16.26'
L2	N84°51'53"E	53.31'
L3	N00°00'53"W	138.00'
L4	N42°34'50"E	82.40'
L5	N62°59'10"E	58.52'
L6	N40°32'52"E	65.65'
L7	N64°58'30"E	85.95'
L8	N05°08'23"E	91.29'
L9	N09°22'55"W	194.47'
L10	S69°25'32"E	125.82'
L11	S28°53'32"E	212.78'
L12	N57°37'54"E	109.88'
L13	N07°33'28"E	283.10'
L14	N27°12'15"E	36.67'
L15	S15°59'04"E	48.49'
L16	S31°04'33"E	117.68'

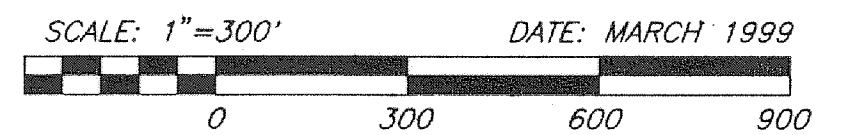
-CENTERLINE DATA-

LINE	ARC	DELTA	RADIUS
C1	915.93'	1°11'37"	3977.63'
C2	213.47'	0°24'02"	4216.80'
C3	702.91'	0°33'03"	4216.80'
C4	402.77'	1°43'19"	1681.73'
C5	188.15'	2°13'39"	500.00'
C6	188.15'	2°13'39"	500.00'
C7	932.38'	3°10'51"	1518.48'
C8	73.69'	0°18'44"	3685.31'
C9	583.50'	0°04'18"	3685.31'
C10	852.21'	2°01'17"	1866.46'
C11	387.47'	0°20'03"	4181.98'
C12	324.70'	0°42'12"	4181.98'
C13	725.63'	0°35'03"	4371.99'
C14	130.42'	0°28'10"	2834.90'
C15	710.15'	1°21'10"	2834.90'
C16	471.24'	0°00'00"	300.00'
C17	273.34'	1°34'35"	800.00'
C18	471.24'	0°00'00"	300.00'
C19	249.50'	4°39'02"	300.00'
C20	544.35'	0°31'20"	1000.00'
C21	167.23'	3°15'19"	300.00'
C22	252.87'	9°35'19"	150.00'
C23	502.48'	2°00'15"	1439.19'

LINE	BEARING	DISTANCE
L63	N03°43'47"W	1245.55'
L64	N02°59'15"W	442.77'
L65	N79°10'28"E	881.06'
L66	N87°08'55"E	828.89'
L67	N87°08'55"E	905.43'
L68	N86°58'45"E	360.48'
L69	N86°58'45"E	448.00'
L70	S86°58'45"W	860.92'
L71	N03°01'15"W	462.00'
L72	S86°58'45"W	287.31'
L73	N03°01'15"W	239.99'
L74	S86°58'45"W	104.00'
L75	S03°01'15"E	459.00'
L76	N03°01'15"W	900.00'
L77	N02°53'05"W	447.75'
L78	N04°01'49"W	693.76'
L79	S85°58'11"W	30.00'
L80	N01°35'07"E	474.98'
L81	S87°05'55"W	456.02'



-BENCHMARK-
3" BRASS DISK SET IN CONCRETE
ELEVATION = 202.5'
STAMPED: IR 1



FINAL PLAT
-INDIGO RANCH-

183 RESIDENTIAL LOTS * TWO BLOCKS * 4 RESERVES