

-CENTERLINE DATA-

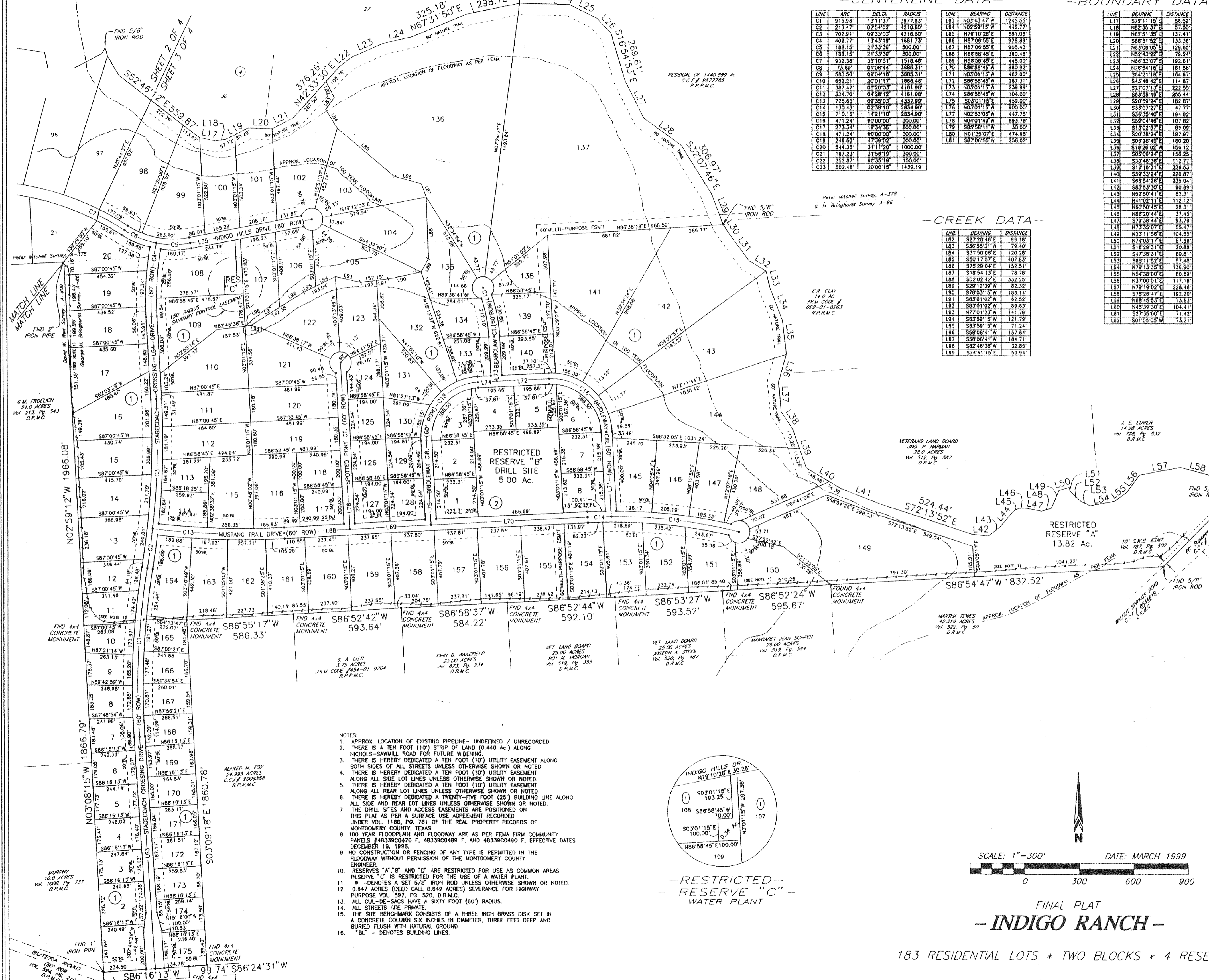
-BOUNDARY DATA-

Table with columns: LINE, ARC, DELTA, RADIUS. Lists centerline data for lines L1 through L23.

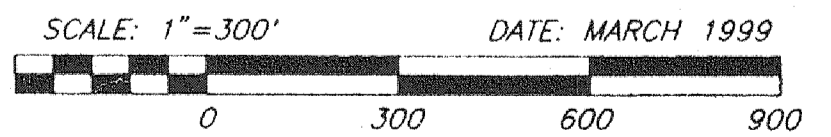
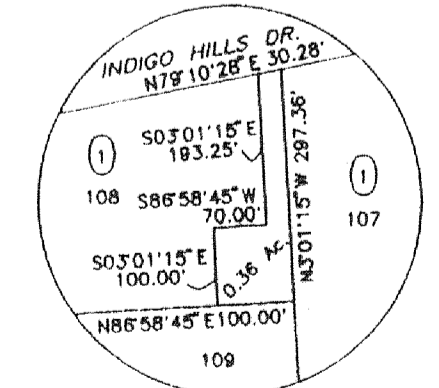
Table with columns: LINE, BEARING, DISTANCE. Lists boundary data for lines L1 through L81.

-CREEK DATA-

Table with columns: LINE, BEARING, DISTANCE. Lists creek data for lines L82 through L99.



- NOTES: 1. APPROX. LOCATION OF EXISTING PIPELINE... 2. THERE IS A TEN FOOT (10') STRIP OF LAND... 3. THERE IS HEREBY DEDICATED A TEN FOOT (10') UTILITY EASEMENT... 4. THERE IS HEREBY DEDICATED A TEN FOOT (10') UTILITY EASEMENT... 5. THERE IS HEREBY DEDICATED A TEN FOOT (10') UTILITY EASEMENT... 6. THERE IS HEREBY DEDICATED A TWENTY-FIVE FOOT (25') BUILDING LINE... 7. THE DRILL SITES AND ACCESS EASEMENTS ARE POSITIONED ON THIS PLAT AS PER A SURFACE USE AGREEMENT... 8. 100 YEAR FLOODPLAIN AND FLOODWAY ARE AS PER FEMA FIRM COMMUNITY PANELS... 9. NO CONSTRUCTION OR FENCING OF ANY TYPE IS PERMITTED... 10. RESERVES "A", "B" AND "D" ARE RESTRICTED FOR USE AS COMMON AREAS... 11. "C" IS RESTRICTED FOR THE USE OF A WATER PLANT... 12. "D" DENOTES A SET 5/8" IRON ROD... 13. ALL CUL-DE-SACS HAVE A SIXTY FOOT (60') RADIUS... 14. ALL STREETS ARE PRIVATE... 15. THE SITE BENCHMARK CONSISTS OF A THREE INCH BRASS DISK SET IN A CONCRETE COLUMN... 16. "BL" - DENOTES BUILDING LINES.



FINAL PLAT - INDIGO RANCH -

183 RESIDENTIAL LOTS * TWO BLOCKS * 4 RESERVES