

DESIGNS

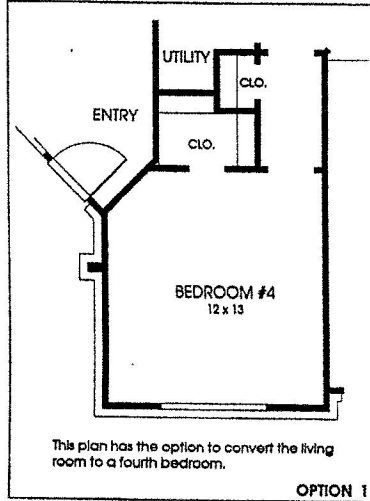
Plan 2020

This home contains approximately 2,020 square feet and includes three bedrooms and two baths.

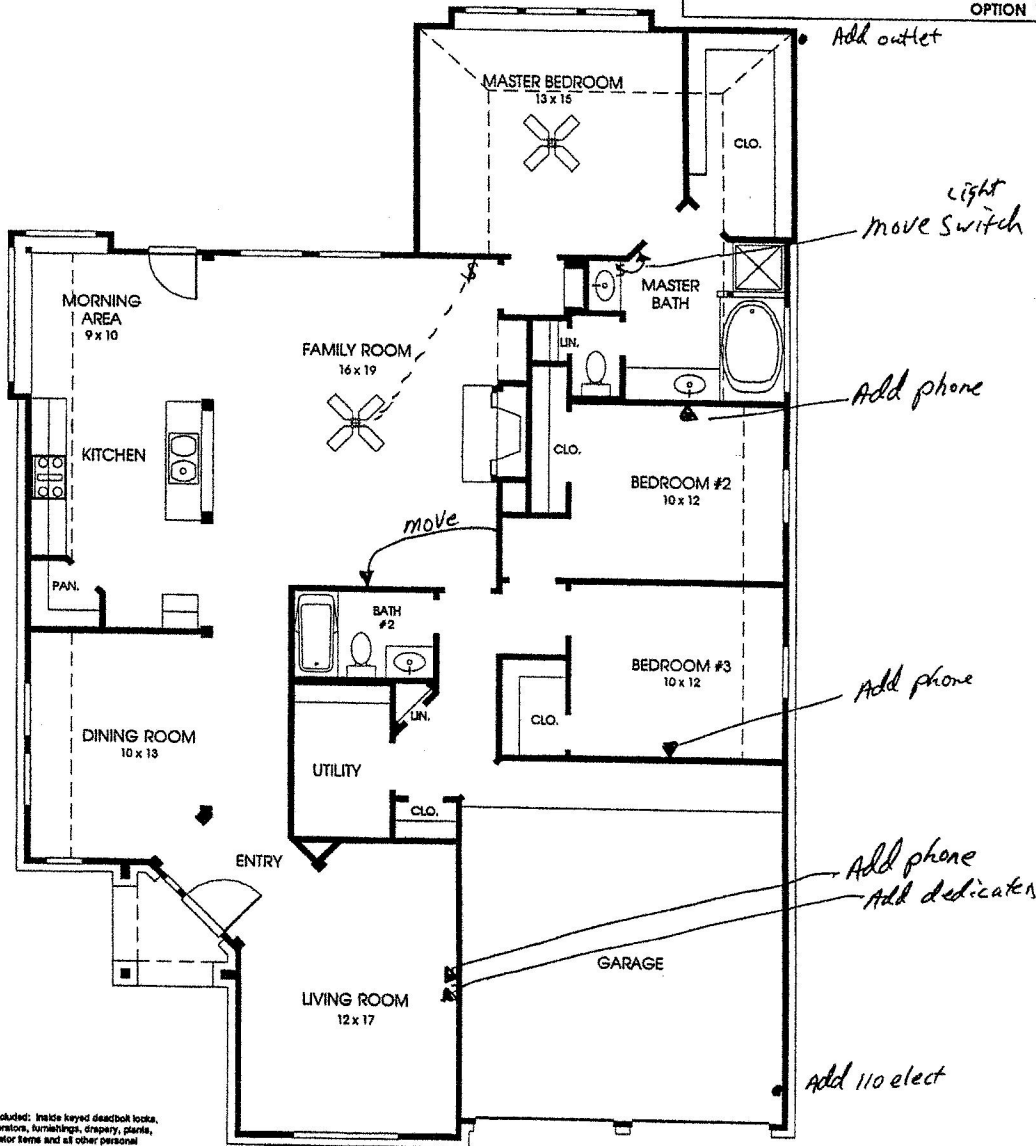
3731 Crescent DR

2-7-98

Mr. J. J. [Signature]



This plan has the option to convert the living room to a fourth bedroom.



Not included: Inside keyed deckbolt locks, refrigerators, furnishings, drapery, plants, decorator items and all other personal property being used in model homes. Builder reserves the right to make changes in the plans and specifications, and to substitute material of similar quality. Room dimensions indicate approximate inside area measurements.
DECEMBER 1997 © 1997 Perry Homes

PERRY HOMES

