

SUPER Neighborhood RESOURCE ASSESSMENT



	Super Neighborhood		Houston	
Pop. characteristics	2000	2019	2000	2019
Total population	40,200	38,782	1,953,631	2,310,432
Persons per sq. mile	6000	5,796	3,166	3,443
Age of Population				
Under 5 years	10%	8%	8%	8%
5- 17 years	23%	21%	19%	17%
18- 64 years	62%	63%	64%	65%
65 and over	4%	8%	9%	10%
Ethnicity				
Non Hispanic Whites	23%	11%	31%	24%
Non Hispanic Blacks	45%	26%	25%	22%
Hispanics	29%	59%	37%	45%
Non Hispanic Asians	3%	3%	6%	7%
Non Hispanic Others	1%	1%	1%	2%
Income				
Under \$25,000	35%	25%	33%	24%
\$25,000 to \$49,999	31%	32%	31%	24%
\$50,000 to \$99,999	25%	28%	24%	27%
Over \$100,000	9%	15%	12%	25%
Median Household Income	\$37,399	\$51,101	\$36,616	\$52,338
Educational Status				
No Diploma	24%	31%	30%	21%
High School Diploma	28%	30%	20%	23%
Some College	32%	23%	23%	23%
Bachelor's or Higher	16%	16%	27%	33%
Housing and Households				
Total housing units	15,168	14,822	782,378	968,704
Occupied	92%	89%	92%	89%
Vacant	8%	11%	8%	11%
Total households	13,995	13,147	717,945	858,374
Family households	10,194	8,628	457,549	521,891
Median Housing Value	\$82,430	\$130,508	\$79,300	\$171,800

Description

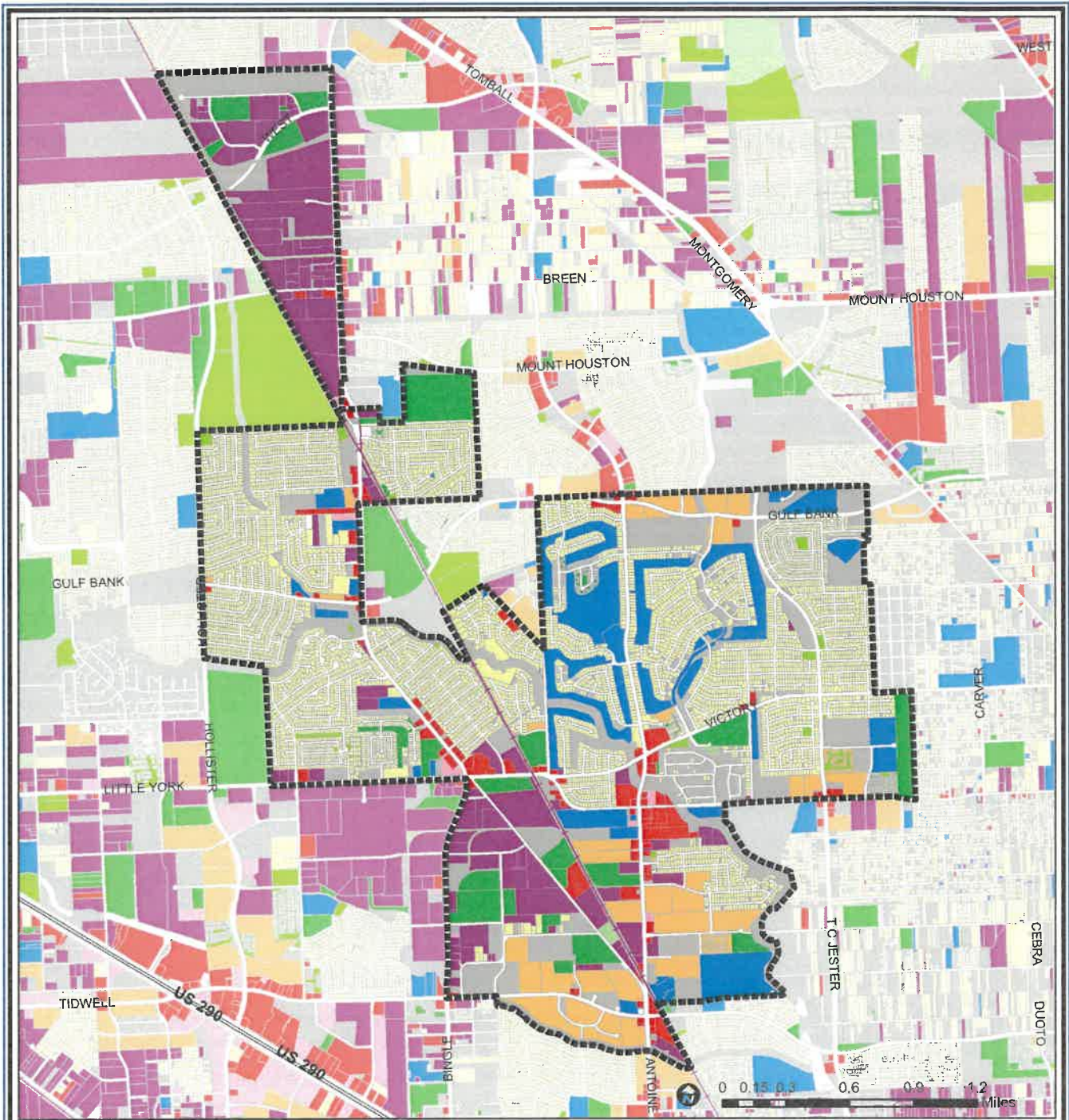
Greater Inwood has its origins in the development of Inwood Forest, a golf course-centered community, in the late 1960s. Other subdivisions include Woodland Trails, Candlelight Forest, Chateau Forest and Antoine Forest. Most of the area is heavily wooded, although the northern portions resemble the prairies found to the northwest. Almost all of Greater Inwood is part of the Aldine ISD. Large apartment complexes are found along Antoine, West Little York and Gulf Bank. New home construction resumed in the Oaks of Inwood luxury home area and Inwood Forest Village patio homes in the 1990s, after a slump from the mid-1980s economic crash. Two industrial parks take access from the Burlington and Northern rail line which bisects the area.

Highlights

- ✓ Houston City Council Districts A, C & B
- ✓ Aldine Independent School District
- ✓ Houston Independent School District
- ✓ Klein Independent School District
- ✓ Cypress-Fairbanks Independent School District
- ✓ 5 Police beats (includes bordering beats)
- ✓ 4,269 acres (6.7 sq. miles)



PLANNING & DEVELOPMENT DEPARTMENT



Greater Inwood : Land Use

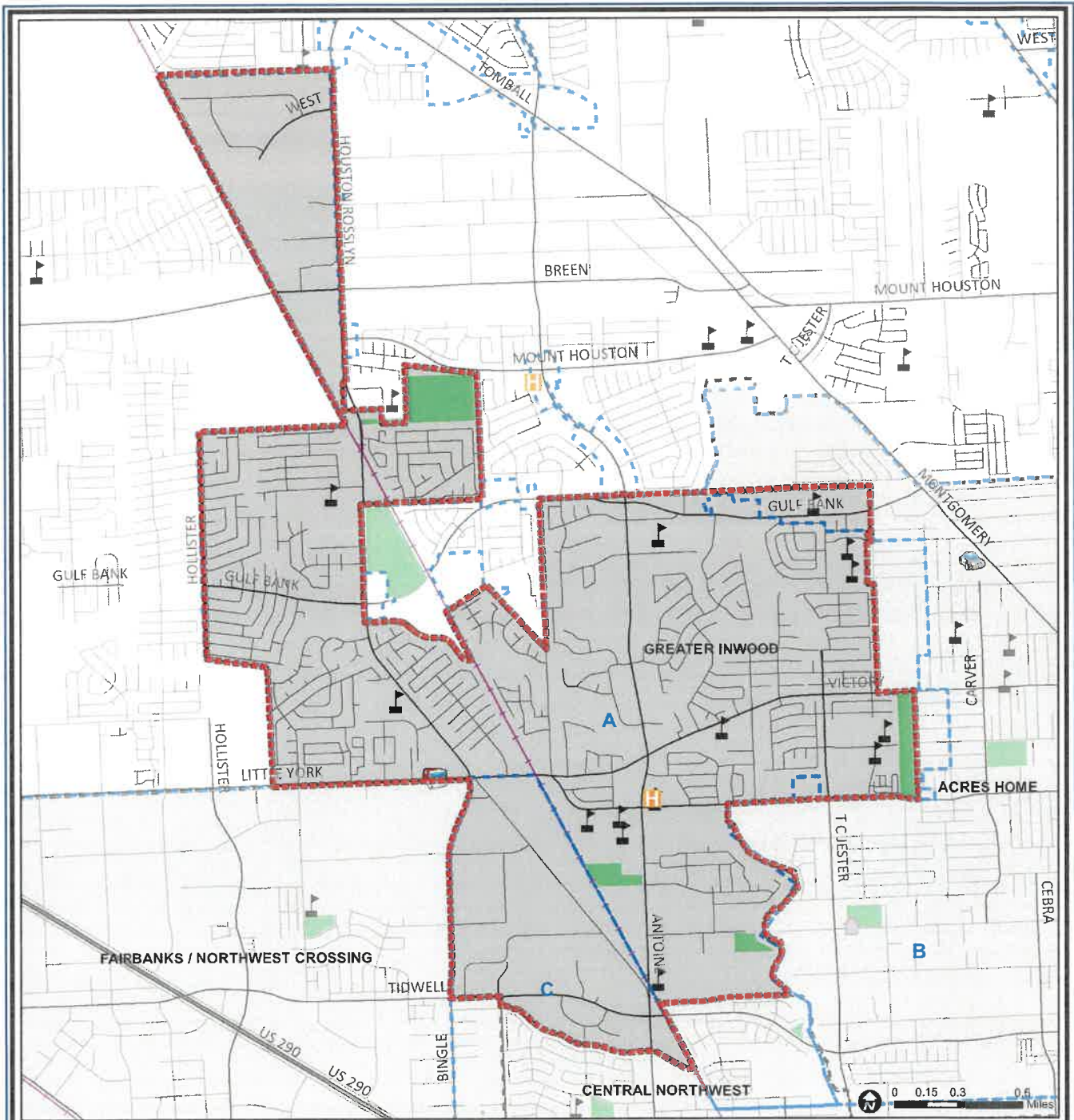
- | | | |
|-------------------------------|------------------------------|-------------------------|
| — Freeway | Commercial | Parks and Open Space |
| — Rail Road | Office | Undeveloped |
| ⬢ Super Neighborhood Boundary | Industrial | Agricultural Production |
| Single-family Residential | Public and Institutional | Open Water |
| Multi-family Residential | Transportation and Utilities | Unknown |

Source: City of Houston GIS Database, HCAD
Date: April 2021

This map is made available for reference purposes only and should not be substituted for a survey product. The City of Houston will not accept liability of any kind in conjunction with its use.



PLANNING & DEVELOPMENT DEPARTMENT



Greater Inwood : Public Facilities

- | | | |
|-----------------------------|-------------------------|---------------------|
| Super Neighborhood Boundary | Airports | Rail Road |
| Community Centers | Harris County Hospitals | Metro Rail Stations |
| Fire Station | Private Hospitals | Metro Rail Line |
| Police Station | Other Health Facilities | Parks |
| School | Library | TIRZ |

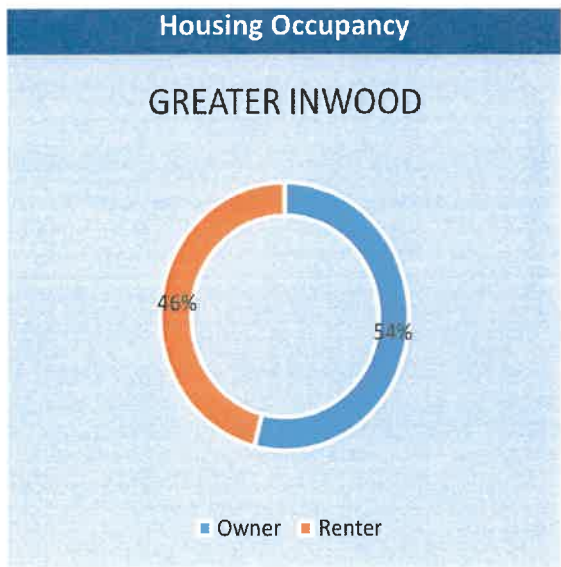
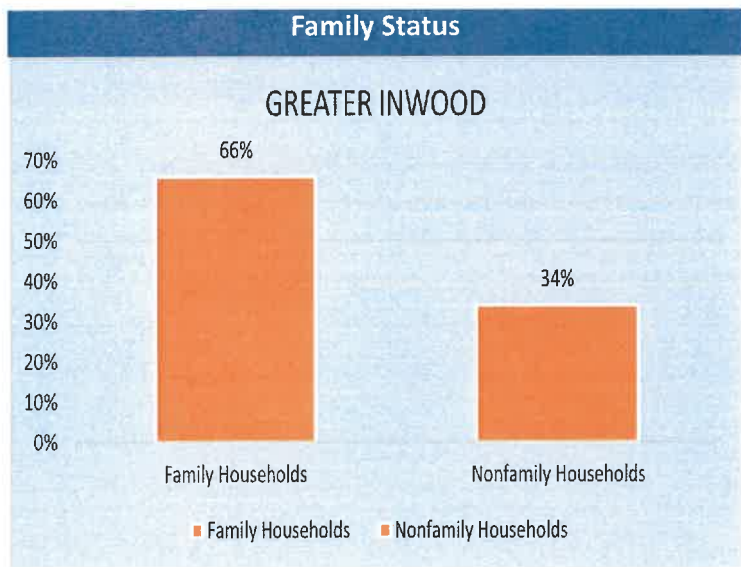
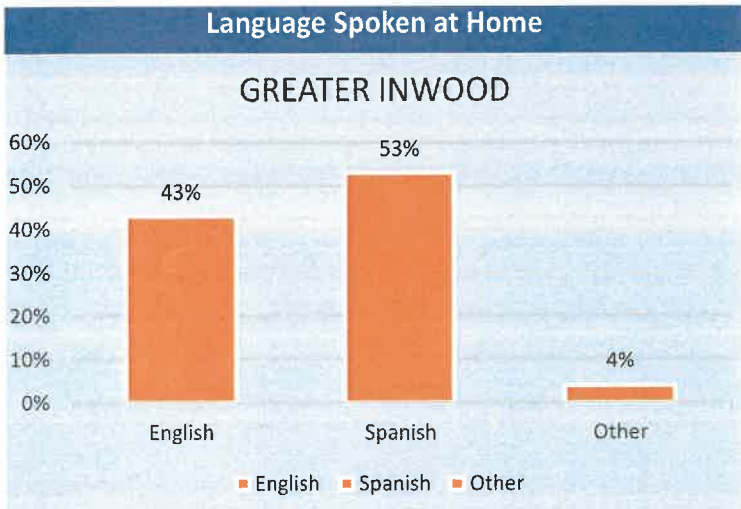
Source: City of Houston GIS Database

Date: April 2021

This map is made available for reference purposes only and should not be substituted for a survey product. The City of Houston will not accept liability of any kind in conjunction with its use.



PLANNING & DEVELOPMENT DEPARTMENT



Source: U.S. Census Bureau, 2000
American Community Survey, 2015-2019 Estimates



**PLANNING &
DEVELOPMENT
DEPARTMENT**