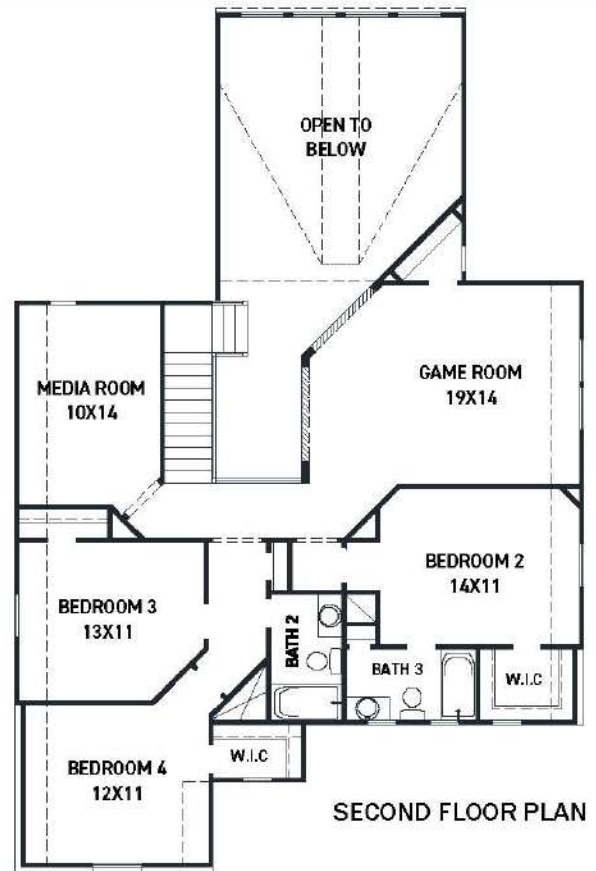
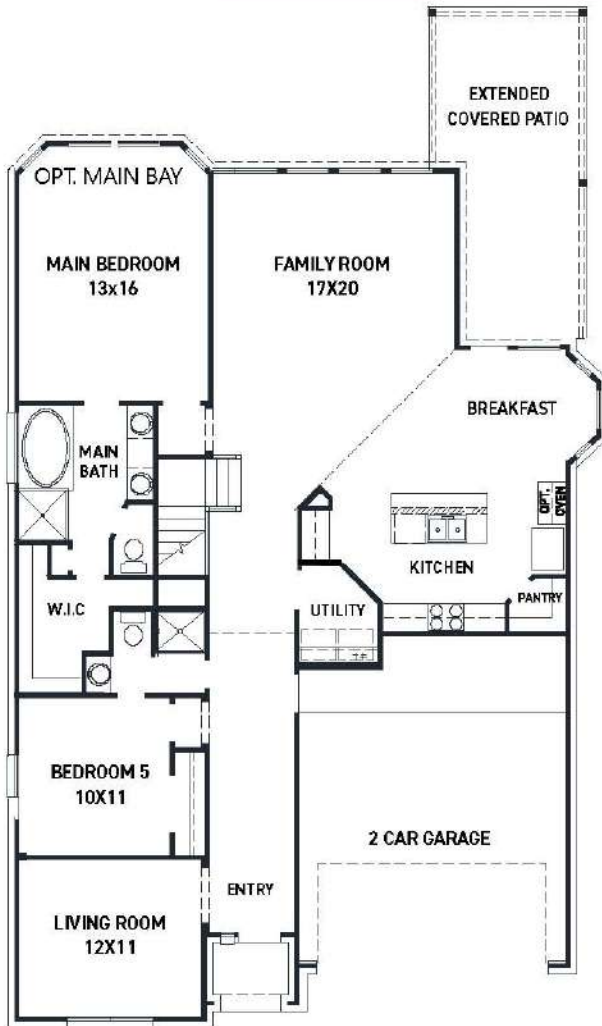




# 1731 Rustling Creek Dr. - Verona Plan

SIENNA 50' - Heritage Park - Section 33

**NEW HOME COMING SOON!**



**FEATURES**

- 2 Story - Apx: 3072sqft.
- 5 Bedrooms - 4 Bathrooms
- 2 Car Garage
- 8214 sqft. Homesite
- Estimated Completion: Dec 2022

- Upgraded front elevation w/ brick on 1st floor sides/back
- Built in appliances w/ a 5 burner cook-top & glass vent hood
- Upgraded 42" kitchen cabinetry w/ hardware
- Sleek Quartz countertops in the kitchen & bathrooms
- Hardwood floors in the main living areas
- 8' front door w/ privacy glass
- THE NEWMARK STANDARD IN SIENNA
- Open cell spray foam insulation
- 16 seer dual stage HVAC system
- Full sprinkler system & sod
- Full rain gutters
- 3rd party inspections (Foundation, frame, energy, final)

REV5/21 (5009)



These drawings are conceptual only and are for the convenience of reference. They should not be relied upon as representations, express or implied, of the final detail of the residences. The builder expressly reserves the right to make modifications, revisions, and changes it deems desirable in its sole and absolute discretion. Dimensions and square footages are approximate and may vary with actual construction.



[newmarkhomes.com](http://newmarkhomes.com)