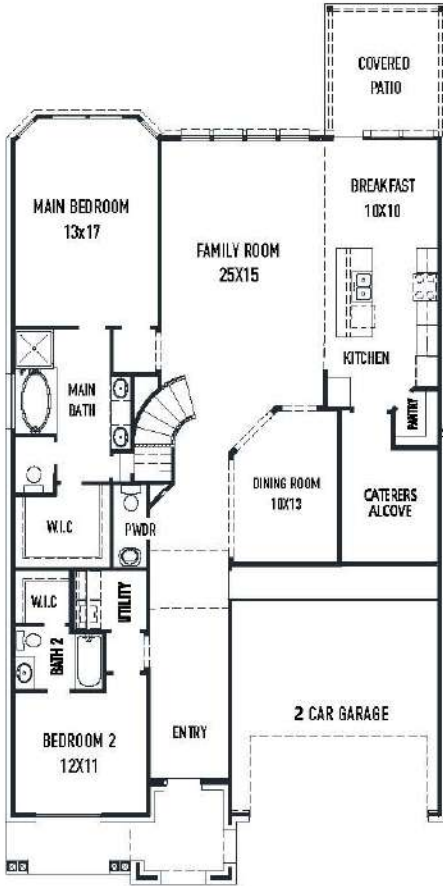




# 1735 Rustling Creek Dr. - Linz Plan

SIENNA 50' - Heritage Park - Section 33D

NEW HOME COMING SOON!



FIRST FLOOR PLAN

### FEATURES

- 2 Story - Apx: 3149sqft.
- 4 Bedrooms - 3.5 Bathrooms
- 2 Car Garage
- 8484 sqft. Homesite
- Estimated Completion: Dec. 2022



SECOND FLOOR PLAN

- Modern front elevation w/ brick on 1st floor sides/back
- Built in appliances w/ a 36" 5 burner cook-top
- Upgraded Modern 42" kitchen cabinetry w/ hardware
- Porcelain countertops in the kitchen
- Upgraded hardwood floors in the main living areas
- Upgraded 8' front door w/ flemish glass

- THE NEWMARK STANDARD IN SIENNA
- Open cell spray foam insulation
- 16 seer dual stage HVAC system
- Full sprinkler system & sod
- Full rain gutters
- 3rd party inspections (Foundation, frame, energy, final)

REV 11/20 (5015)



These drawings are conceptual only and are for the convenience of reference. They should not be relied upon as representations, express or implied, of the final detail of the residences. The builder expressly reserves the right to make modifications, revisions, and changes it deems desirable in its sole and absolute discretion. Dimensions and square footages are approximate and may vary with actual construction.



[newmarkhomes.com](http://newmarkhomes.com)