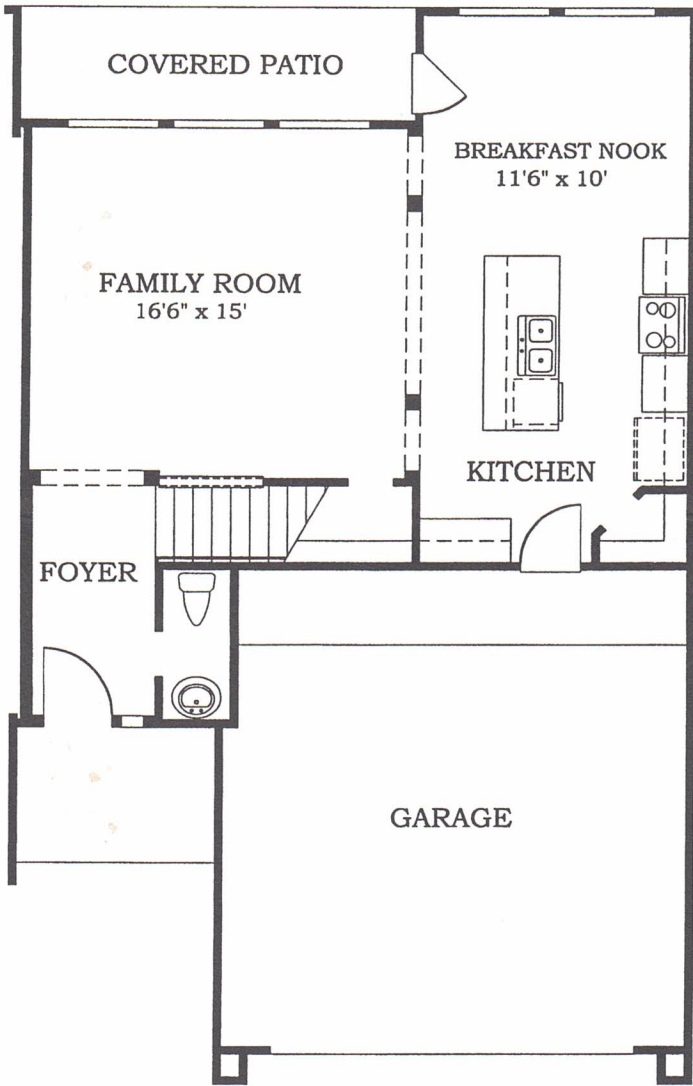




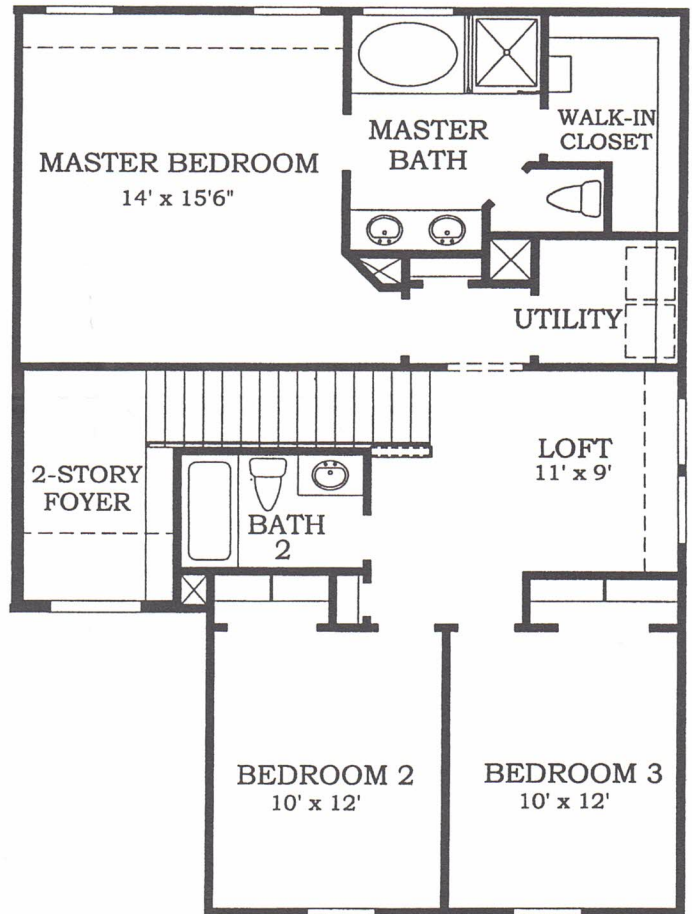
Everything's Includedsm Homes

The Everest

1692 sq. ft.



1st FLOOR



2nd FLOOR

10/04

The specific features in a home may vary from home to home and from one community to another. We reserve the right to substitute equipment, materials, appliances and brand names with items of equal or higher, in our sole opinion, value. Color and size variations may occur. The prices of our homes, included features, and available locations are subject to change without notice. Please see the actual home purchase agreement for additional information, disclosures, and disclaimers relating to the home and its features. Void where prohibited by law.



550 Greens Parkway, Suite 200
Houston, TX 77067

www.lennar.com

©2004 Lennar Inc. 2210





Everything's Includedsm Homes

Executive Twin Villas Collection Features

Interior:

- Security system with 1 keypad
- Rounded sheetrock corners (per plan)
- Mini-blinds on all operable windows
- Colonist raised panel interior doors
- Direct vent fireplace with gas log lighter, ceramic tile surround and mantle (per plan)
- Ceramic tile flooring in foyer
- Multi-speed ceiling fan with light kit in all bedrooms, family room, game room and study/sitting room
- Garage door opener
- 1/2" Rebond carpet pad
- 100% nylon "Stain Relief" carpeting with a five-year wear guarantee
- White "Divided Light" style windows on front of home
- Folding stair access to attic
- Pre-wired for telephones in kitchen, each bedroom, game room and study/sitting room
- Pre-wired for cable television outlets in each bedroom, family room, game room/loft and study/sitting room (where applicable)
- Brushed chrome interior door hardware
- Smoke detectors
- Crown molding (per plan)

Master Bath:

- 42x60 oval garden tub with therapeutic jets
- M^oen[®] washerless faucets
- Ceramic tile flooring
- Separate cultured marble shower
- Cultured marble vanity tops
- Mirrored medicine cabinet
- Posi-temp shower valves
- Air conditioned walk-in closet with fluorescent lighting

Secondary Bath:

- 6x6 ceramic tile shower walls
- Polished chrome M^oen[®] washerless faucets
- Ceramic tile flooring
- Cultured marble vanity tops
- Mirrored medicine cabinet
- Posi-temp shower valves

Powder Bath:

- Porcelain pedestal sink
- Polished chrome hardware
- Designer mirror
- Ceramic tile floor

Kitchen:

- White on white appliances
- Complete GE[®] appliance package:
 - Non-vented microwave oven
 - 22 cu. ft. refrigerator with ice maker
 - Self-cleaning electric oven
 - Multi-cycle dishwasher
- Recessed ceiling lighting
- Ceramic tile flooring in kitchen/breakfast area
- 42" upper cabinets
- Ceramic tile backsplash
- Stainless steel sink with designer faucet
- Gas line to range
- Garbage disposal

Laundry Room:

- Large capacity heavy duty GE[®] 7-cycle washer
- Heavy duty GE[®] 3-cycle electric dryer with 3 temperatures
- Ceramic tile floor
- Convenient shelving for storage
- Fluorescent lighting



Everything's Includedsm Homes

Executive Twin Villas Collection Features

Energy Features:

- **Energy Star[®] builder**
- **LP Tech Shield (Radiant Barrier)**
- **Low-E double pane windows**
- **13+ SEER Carrier air conditioning**
- **A/C system with jumper ducts (per plan)**
- **Honeywell[®] programmable thermostat**
- **High efficiency gas heating**
- **Dow Styrofoam insulating sheathing**
- **Polyseal foam insulation used at exterior doors, windows and floor/ceiling plates**
- **Continuous perforated Hardi soffit vents**
- **Insulation Specifications:**
 - R-30 flat ceilings
 - R-22 sloped ceilings
 - R-13 walls
 - R-3.0 insulated sheathing
 - R-6.0 heating and air conditioning duct
 - R-19 garage ceiling, with living area above and below attic mechanical items

Exterior Features:

- **50-year warranted Hardi-Plank masonry siding, soffits, fascia and trim**
- **Mahogany leaded glass entry door**
- **Fully sodded front and rear yard with landscape package**
- **Garage door with opener with 2 remotes**
- **Wood fenced back yard with gate**
- **GFI weatherproof exterior outlets, front and back**
- **Hose connections, front and back with anti-siphoning device**
- **Screens on all operable windows**
- **Deadbolt locks for exterior doors**
- **Concrete patio**
- **Front rain gutters at entry (per plan)**
- **Bright fluorescent lighting in garage**
- **Lighted door bell**

Construction Features:

- **Post tension foundation certified on-site by an independent engineer**
- **Vanguard PEX with water supply lines home run shut off valves**
- **2-10 Home Buyers Warranty**
- **Shingles nailed (not stapled) to decking**
- **3/4" tongue and groove subflooring secured with screws and adhesive on two-story homes**
- **Copper wiring**
- **High quality composition roof shingles with 20-year warranty**
- **2nd story I-Joist floor system**