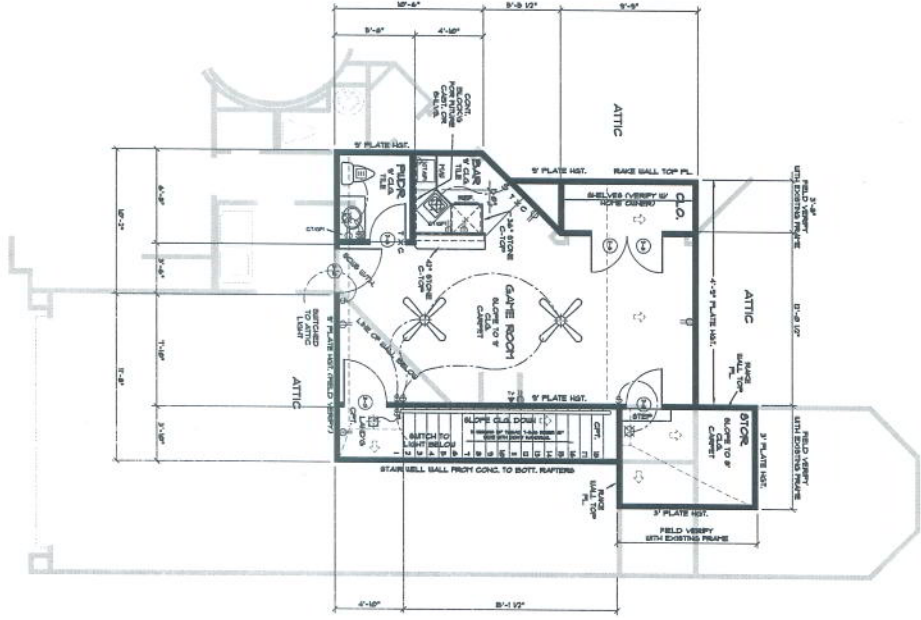


ELECTRICAL PLAN NOTES

- GENERAL NOTES:**
- A) PROFESSIONAL ENGINEER'S SIGNATURE AT ALL
 - B) ROOM FLOOR QUANTITY UNDER 4" FROM
 - C) ROOM FLOOR QUANTITY UNDER 4" FROM
- KEY NOTES:**
- 1) LIGHT SWITCH TO ATTIC LIGHT ON WALL
 - 2) OVER-CORNER SWITCHES 200V @ 2" A/F
 - 3) PREPARE FOR TUBE CANNED FAN
 - 4) **REMOVE 2" DIA. HOLE IN WALL TO ATTIC**
 - 5) **REMOVE 2" DIA. HOLE IN WALL TO ATTIC**
 - 6) **REMOVE 2" DIA. HOLE IN WALL TO ATTIC**
 - 7) **REMOVE 2" DIA. HOLE IN WALL TO ATTIC**
 - 8) **REMOVE 2" DIA. HOLE IN WALL TO ATTIC**
 - 9) **REMOVE 2" DIA. HOLE IN WALL TO ATTIC**
 - 10) **REMOVE 2" DIA. HOLE IN WALL TO ATTIC**
 - 11) **REMOVE 2" DIA. HOLE IN WALL TO ATTIC**
 - 12) **REMOVE 2" DIA. HOLE IN WALL TO ATTIC**
 - 13) **REMOVE 2" DIA. HOLE IN WALL TO ATTIC**
 - 14) **REMOVE 2" DIA. HOLE IN WALL TO ATTIC**
 - 15) **REMOVE 2" DIA. HOLE IN WALL TO ATTIC**
 - 16) **REMOVE 2" DIA. HOLE IN WALL TO ATTIC**
 - 17) **REMOVE 2" DIA. HOLE IN WALL TO ATTIC**
 - 18) **REMOVE 2" DIA. HOLE IN WALL TO ATTIC**
 - 19) **REMOVE 2" DIA. HOLE IN WALL TO ATTIC**
 - 20) **REMOVE 2" DIA. HOLE IN WALL TO ATTIC**
 - 21) **REMOVE 2" DIA. HOLE IN WALL TO ATTIC**
 - 22) **REMOVE 2" DIA. HOLE IN WALL TO ATTIC**
 - 23) **REMOVE 2" DIA. HOLE IN WALL TO ATTIC**
 - 24) **REMOVE 2" DIA. HOLE IN WALL TO ATTIC**
 - 25) **REMOVE 2" DIA. HOLE IN WALL TO ATTIC**
 - 26) **REMOVE 2" DIA. HOLE IN WALL TO ATTIC**
 - 27) **REMOVE 2" DIA. HOLE IN WALL TO ATTIC**
 - 28) **REMOVE 2" DIA. HOLE IN WALL TO ATTIC**
 - 29) **REMOVE 2" DIA. HOLE IN WALL TO ATTIC**
 - 30) **REMOVE 2" DIA. HOLE IN WALL TO ATTIC**
 - 31) **REMOVE 2" DIA. HOLE IN WALL TO ATTIC**
 - 32) **REMOVE 2" DIA. HOLE IN WALL TO ATTIC**
 - 33) **REMOVE 2" DIA. HOLE IN WALL TO ATTIC**
 - 34) **REMOVE 2" DIA. HOLE IN WALL TO ATTIC**
 - 35) **REMOVE 2" DIA. HOLE IN WALL TO ATTIC**
 - 36) **REMOVE 2" DIA. HOLE IN WALL TO ATTIC**
 - 37) **REMOVE 2" DIA. HOLE IN WALL TO ATTIC**
 - 38) **REMOVE 2" DIA. HOLE IN WALL TO ATTIC**
 - 39) **REMOVE 2" DIA. HOLE IN WALL TO ATTIC**
 - 40) **REMOVE 2" DIA. HOLE IN WALL TO ATTIC**
 - 41) **REMOVE 2" DIA. HOLE IN WALL TO ATTIC**
 - 42) **REMOVE 2" DIA. HOLE IN WALL TO ATTIC**
 - 43) **REMOVE 2" DIA. HOLE IN WALL TO ATTIC**
 - 44) **REMOVE 2" DIA. HOLE IN WALL TO ATTIC**
 - 45) **REMOVE 2" DIA. HOLE IN WALL TO ATTIC**
 - 46) **REMOVE 2" DIA. HOLE IN WALL TO ATTIC**
 - 47) **REMOVE 2" DIA. HOLE IN WALL TO ATTIC**
 - 48) **REMOVE 2" DIA. HOLE IN WALL TO ATTIC**
 - 49) **REMOVE 2" DIA. HOLE IN WALL TO ATTIC**
 - 50) **REMOVE 2" DIA. HOLE IN WALL TO ATTIC**

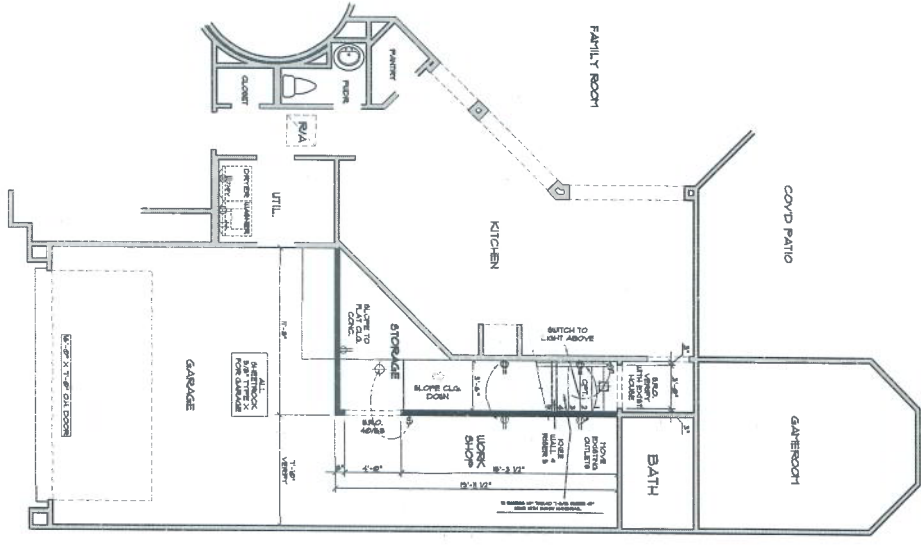
ELECTRICAL LEGEND

- 1) SWITCH
- 2) THREE-WAY SWITCH
- 3) FOUR-WAY SWITCH
- 4) RECEPTACLE
- 5) VOLUME CONTROL SWITCH
- 6) DIMMER
- 7) DIMMER
- 8) DIMMER
- 9) DIMMER
- 10) DIMMER
- 11) DIMMER
- 12) DIMMER
- 13) DIMMER
- 14) DIMMER
- 15) DIMMER
- 16) DIMMER
- 17) DIMMER
- 18) DIMMER
- 19) DIMMER
- 20) DIMMER
- 21) DIMMER
- 22) DIMMER
- 23) DIMMER
- 24) DIMMER
- 25) DIMMER
- 26) DIMMER
- 27) DIMMER
- 28) DIMMER
- 29) DIMMER
- 30) DIMMER
- 31) DIMMER
- 32) DIMMER
- 33) DIMMER
- 34) DIMMER
- 35) DIMMER
- 36) DIMMER
- 37) DIMMER
- 38) DIMMER
- 39) DIMMER
- 40) DIMMER
- 41) DIMMER
- 42) DIMMER
- 43) DIMMER
- 44) DIMMER
- 45) DIMMER
- 46) DIMMER
- 47) DIMMER
- 48) DIMMER
- 49) DIMMER
- 50) DIMMER
- 51) DIMMER
- 52) DIMMER
- 53) DIMMER
- 54) DIMMER
- 55) DIMMER
- 56) DIMMER
- 57) DIMMER
- 58) DIMMER
- 59) DIMMER
- 60) DIMMER
- 61) DIMMER
- 62) DIMMER
- 63) DIMMER
- 64) DIMMER
- 65) DIMMER
- 66) DIMMER
- 67) DIMMER
- 68) DIMMER
- 69) DIMMER
- 70) DIMMER
- 71) DIMMER
- 72) DIMMER
- 73) DIMMER
- 74) DIMMER
- 75) DIMMER
- 76) DIMMER
- 77) DIMMER
- 78) DIMMER
- 79) DIMMER
- 80) DIMMER
- 81) DIMMER
- 82) DIMMER
- 83) DIMMER
- 84) DIMMER
- 85) DIMMER
- 86) DIMMER
- 87) DIMMER
- 88) DIMMER
- 89) DIMMER
- 90) DIMMER
- 91) DIMMER
- 92) DIMMER
- 93) DIMMER
- 94) DIMMER
- 95) DIMMER
- 96) DIMMER
- 97) DIMMER
- 98) DIMMER
- 99) DIMMER
- 100) DIMMER



FLOOR PLAN 2

SCALE: 1/4" = 1'-0"



FLOOR PLAN 1

SCALE: 1/4" = 1'-0"

THESE DRAWINGS AND PROJECTS HEREON ARE THE PROPERTY OF MC CONSTRUCTION, L.L.C. AND MAY NOT BE COPIED OR REPRODUCED IN ANY MANNER WITHOUT THE WRITTEN CONSENT OF MC CONSTRUCTION, L.L.C.

THIS PLAN WAS NOT PREPARED BY A PROFESSIONAL ARCHITECT OR ENGINEER. PLAN IS FOR CONCEPT AND ESTIMATING PURPOSE ONLY. IF PLANS ARE USED FOR CONSTRUCTION AND NO PROFESSIONAL SEAL IS APPLIED, THE CONTRACTOR ASSUMES FULL RESPONSIBILITY FOR THE DESIGN, DETAILS, SPECIFICATIONS AND APPLICABLE CODES. THE CONTRACTOR SHALL BE RESPONSIBLE FOR OBTAINING ALL NECESSARY PERMITS AND APPROVALS.

MC Construction, L.L.C.
Katy, Texas

5328 E 5th Street Katy, TX 77493
Office: (281) 391-8000
Fax: (281) 391-8095

visit us at <http://mcoconstructionllc.com>

FIRST FLOOR PLAN

Davis and Kelli Terzian
Game Room from Attic Space

23918 Travis Trail
Katy, Texas 77494

A 3

DATE: 03/23/12
DRAWN BY: TJB/BN
CHECKED: [blank]
APPROVED: [blank]