

573.45 FEET

North 01° 25' 52" West
233.13 10 feet 274411

365.81'

303.84'

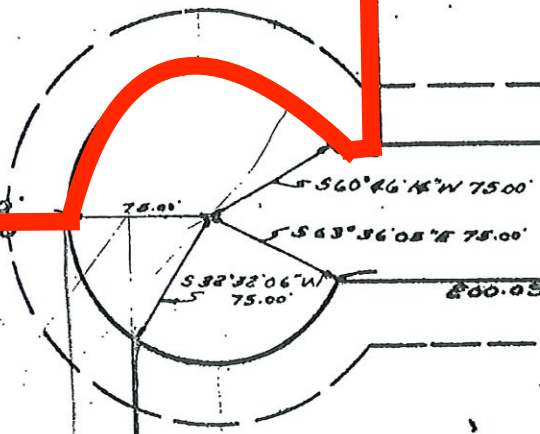
17
2.190 Ac.

16
1.756 Ac.

251.72'

303.84'

N 88° 35' 16" E 200.00'
S 88° 35' 16" W 200.00'



18
1.496 Ac.

19
1.674 Ac.

15

221.97'

245.82'

233.02'

303.84'