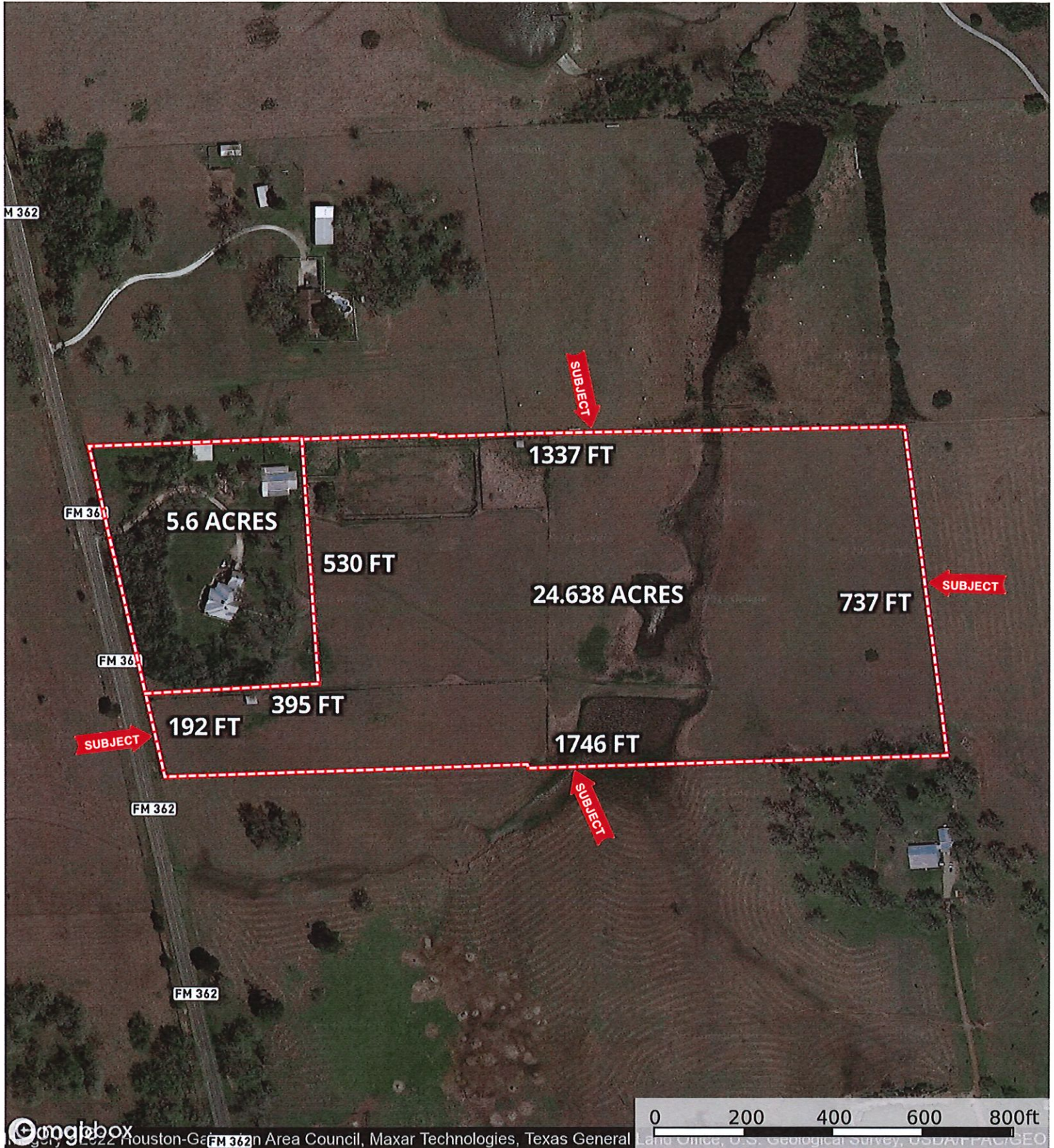

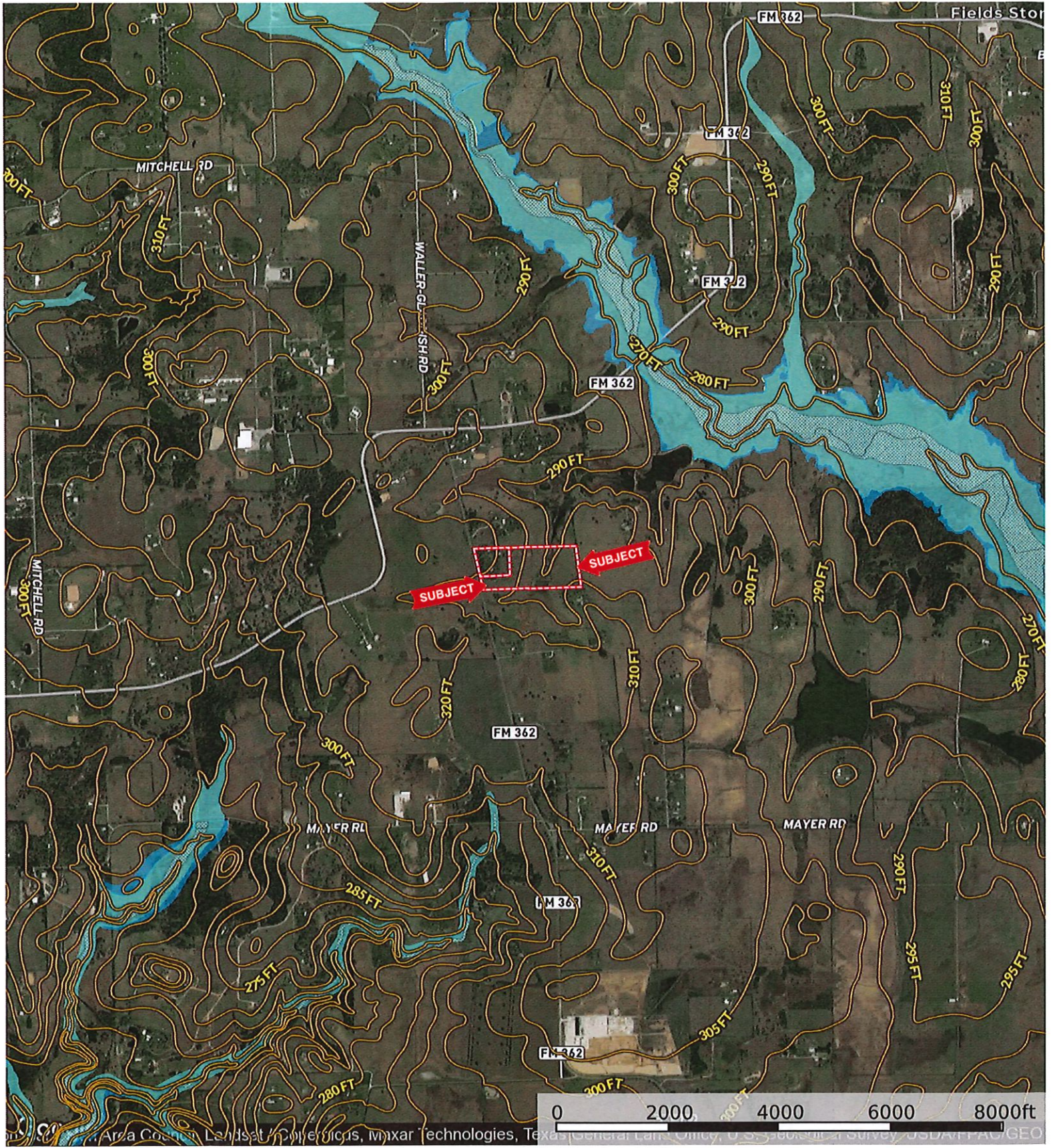


24602 FM 362
Waller County, Texas, AC +/-

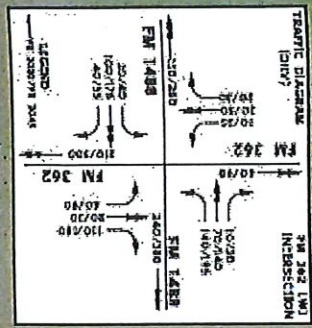


Boundary

 The information contained herein was obtained from sources deemed to be reliable. MapRight Services makes no warranties or guarantees as to the completeness or accuracy thereof.



FM 1488 PROPOSED REALIGNMENT/WIDENING
PER TxDOT - AUGUST 2022



SUBJECT

SUBJECT

SUBJECT

End Project CSJ 0523-01-031
Begin Project CSJ 0523-03-011
Sta: 523+60

WALLER COUNTY
HARRIS COUNTY

NEW ALIGNMENT

355
380

PROP ROW

