

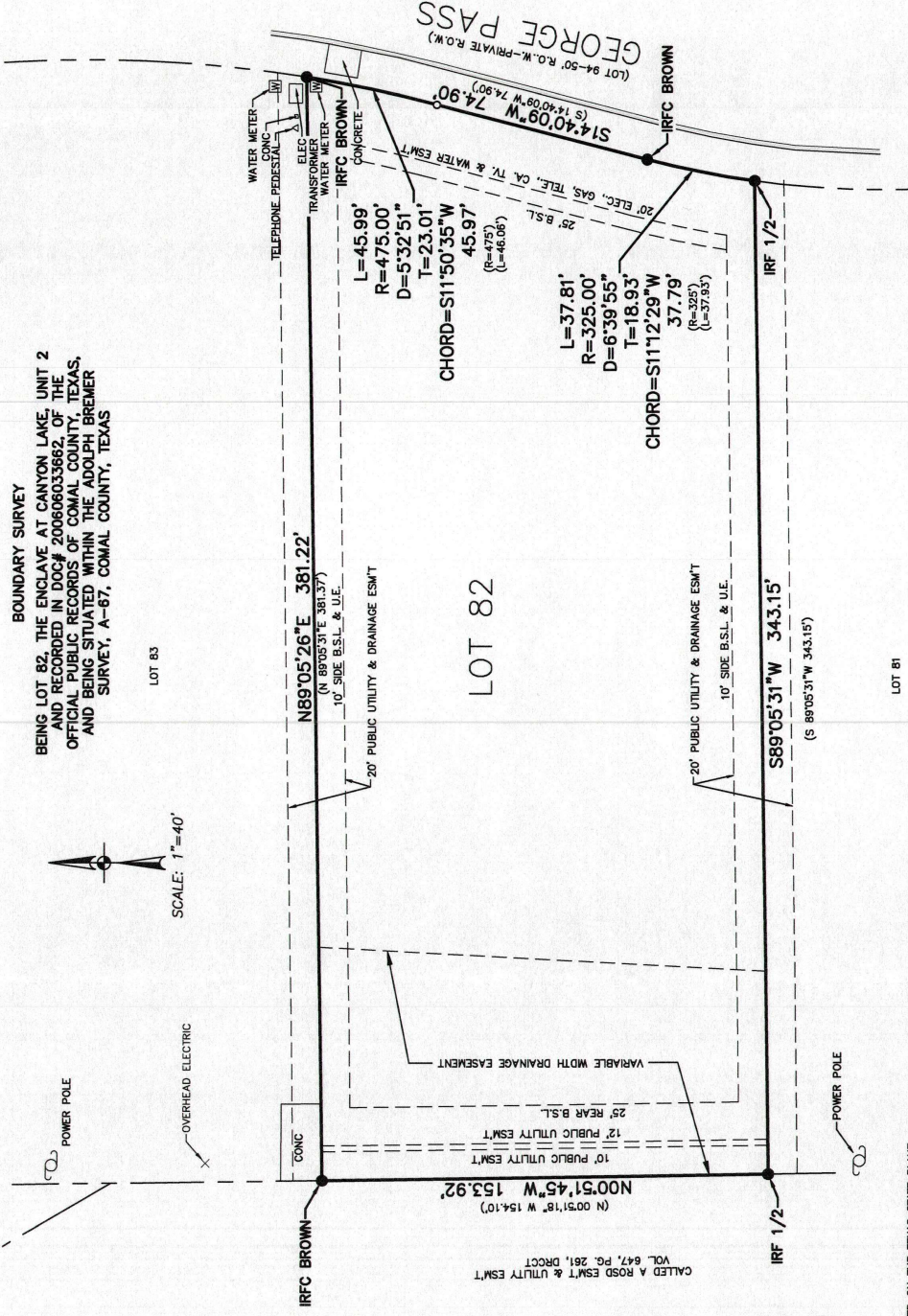
**LEGEND:**

- O = (IPS) SET 1/2" IRON PIN W/ A PLASTIC CAP STAMPED "DAM #5348 PROP. COR." UNLESS OTHERWISE NOTED
- = IRON PIN UNLESS OTHERWISE NOTED
- = CHAINLINK FENCE
- = BARBED WIRE FENCE
- = WOOD FENCE
- = OVERHEAD ELECTRIC
- = POWER POLE (PP)
- Y = GUY WIRE
- B.S.L. = BUILDING SETBACK LINE
- D.E. = DRAINAGE EASEMENT
- U.E. = UTILITY EASEMENT

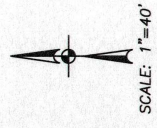
**TITLE COMMITMENT:**  
 CHICAGO TITLE INSURANCE CO.  
 200606033662  
 SEBIM PROPERTIES, LLC  
 GF# 20210100248W  
 EFFECTIVE DATE: JAN. 5, 2021

**REFERENCES:**

- The following restrictive covenants of record itemized below: Clerk's File Nos. 200606031403, 200606033662 (PCL) 200606014121, 200606014816, 200606014817, 200606014818, 200606014819, 200606014820, 200606014821, 200606014822, 200606014823, 200606014824, 200606014825, 200606014826, 200606014827, 200606014828, 200606014829, 200606014830, 200606014831, 200606014832, 200606014833, 200606014834, 200606014835, 200606014836, 200606014837, 200606014838, 200606014839, 200606014840, 200606014841, 200606014842, 200606014843, 200606014844, 200606014845, 200606014846, 200606014847, 200606014848, 200606014849, 200606014850, 200606014851, 200606014852, 200606014853, 200606014854, 200606014855, 200606014856, 200606014857, 200606014858, 200606014859, 200606014860, 200606014861, 200606014862, 200606014863, 200606014864, 200606014865, 200606014866, 200606014867, 200606014868, 200606014869, 200606014870, 200606014871, 200606014872, 200606014873, 200606014874, 200606014875, 200606014876, 200606014877, 200606014878, 200606014879, 200606014880, 200606014881, 200606014882, 200606014883, 200606014884, 200606014885, 200606014886, 200606014887, 200606014888, 200606014889, 200606014890, 200606014891, 200606014892, 200606014893, 200606014894, 200606014895, 200606014896, 200606014897, 200606014898, 200606014899, 200606014900, 200606014901, 200606014902, 200606014903, 200606014904, 200606014905, 200606014906, 200606014907, 200606014908, 200606014909, 200606014910, 200606014911, 200606014912, 200606014913, 200606014914, 200606014915, 200606014916, 200606014917, 200606014918, 200606014919, 200606014920, 200606014921, 200606014922, 200606014923, 200606014924, 200606014925, 200606014926, 200606014927, 200606014928, 200606014929, 200606014930, 200606014931, 200606014932, 200606014933, 200606014934, 200606014935, 200606014936, 200606014937, 200606014938, 200606014939, 200606014940, 200606014941, 200606014942, 200606014943, 200606014944, 200606014945, 200606014946, 200606014947, 200606014948, 200606014949, 200606014950, 200606014951, 200606014952, 200606014953, 200606014954, 200606014955, 200606014956, 200606014957, 200606014958, 200606014959, 200606014960, 200606014961, 200606014962, 200606014963, 200606014964, 200606014965, 200606014966, 200606014967, 200606014968, 200606014969, 200606014970, 200606014971, 200606014972, 200606014973, 200606014974, 200606014975, 200606014976, 200606014977, 200606014978, 200606014979, 200606014980, 200606014981, 200606014982, 200606014983, 200606014984, 200606014985, 200606014986, 200606014987, 200606014988, 200606014989, 200606014990, 200606014991, 200606014992, 200606014993, 200606014994, 200606014995, 200606014996, 200606014997, 200606014998, 200606014999, 200606015000.



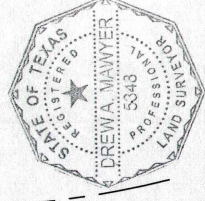
**BOUNDARY SURVEY**  
 BEING LOT 82, THE ENCLAVE AT CANYON LAKE, UNIT 2 AND RECORDED IN DOC# 200606033662, OF THE OFFICIAL PUBLIC RECORDS OF COMAL COUNTY, TEXAS, AND BEING SITUATED WITHIN THE ADOLPH BREMER SURVEY, A-87, COMAL COUNTY, TEXAS



STATE OF TEXAS  
 COUNTY OF COMAL

I HEREBY CERTIFY TO THE BEST OF MY KNOWLEDGE AND BELIEF THAT THIS SURVEY IS TRUE AND CORRECT ACCORDING TO AN ACTUAL SURVEY MADE ON THE GROUND UNDER MY SUPERVISION

THIS 18th DAY OF January 2021



*Drew A. Mawyer*  
 DREW A. MAWYER  
 REGISTERED PROFESSIONAL LAND SURVEYOR NO. 5348

BEARINGS BASED ON THE TEXAS STATE PLANE COORDINATE SYSTEM, TEXAS SOUTH CENTRAL ZONE (4204), NORTH AMERICAN DATUM 1983.



DATE: JAN. 2021 JOB: MISSAS

ADDRESS:  
 2420 GEORGE PASS  
 CANYON LAKE, TX 78133