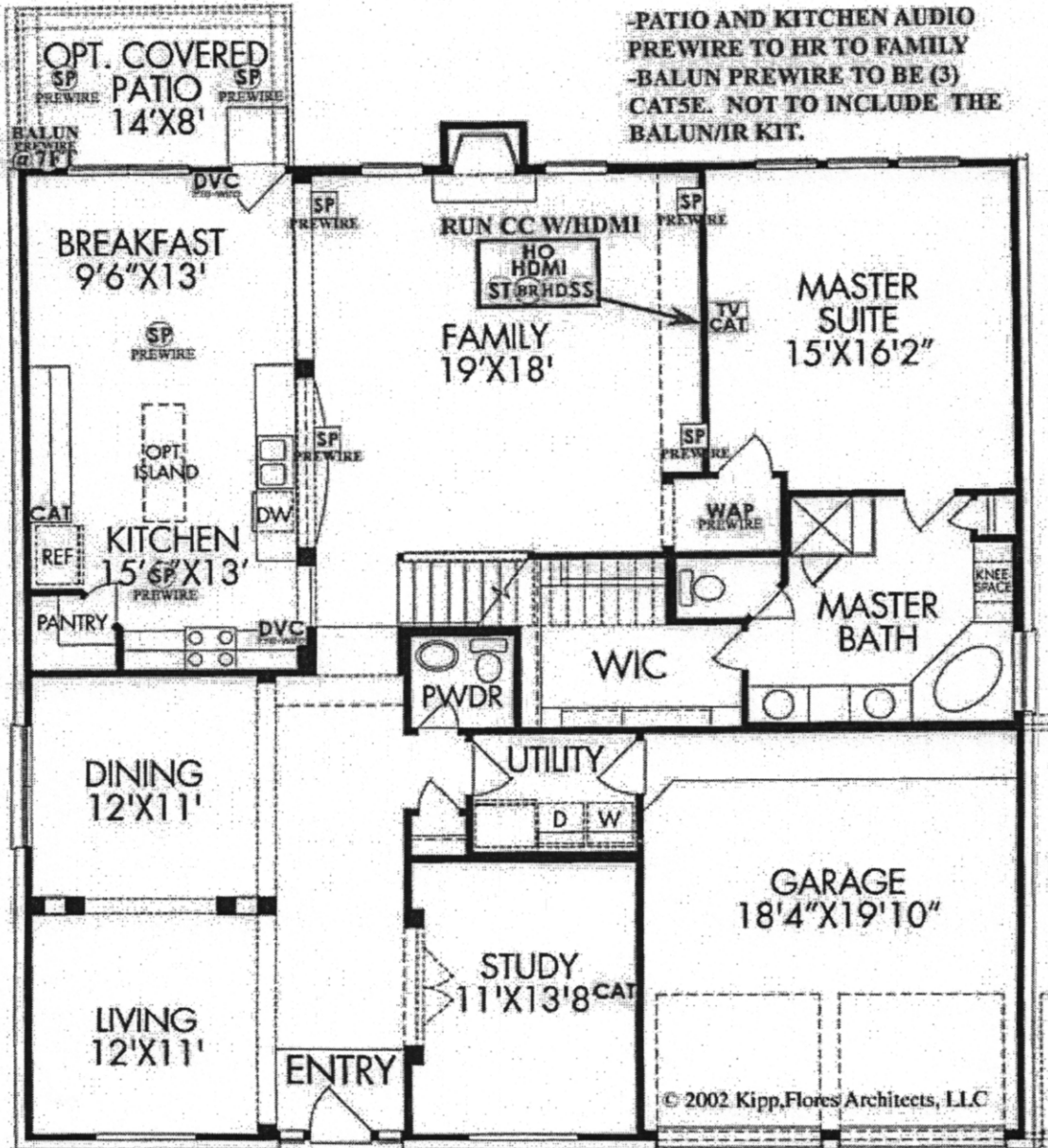


7018 River Rapids Lane



-PATIO AND KITCHEN AUDIO
PREWIRE TO HR TO FAMILY
-BALUN PREWIRE TO BE (3)
CAT5E. NOT TO INCLUDE THE
BALUN/IR KIT.

Carlin
Home Buyer Signature

- TV - TV Location (1 RG6)
- CAT - Phone or DATA (1 CAT5e)
- ENT - Home Entertainment (1 CAT5e/ 2 RG6)
- HO - Home Outlet(1 CAT5e/1 RG6)
- UNV - Universal Outlet (2 CAT5e/ 1 RG6)
- NO - Network Outlet (3 CAT5e/ 1 RG6)
- SP - Speaker Prewire
- SP - In-Ceiling Speaker
- SP - In-Wall Speaker
- AS - Atmos Speaker Prewire

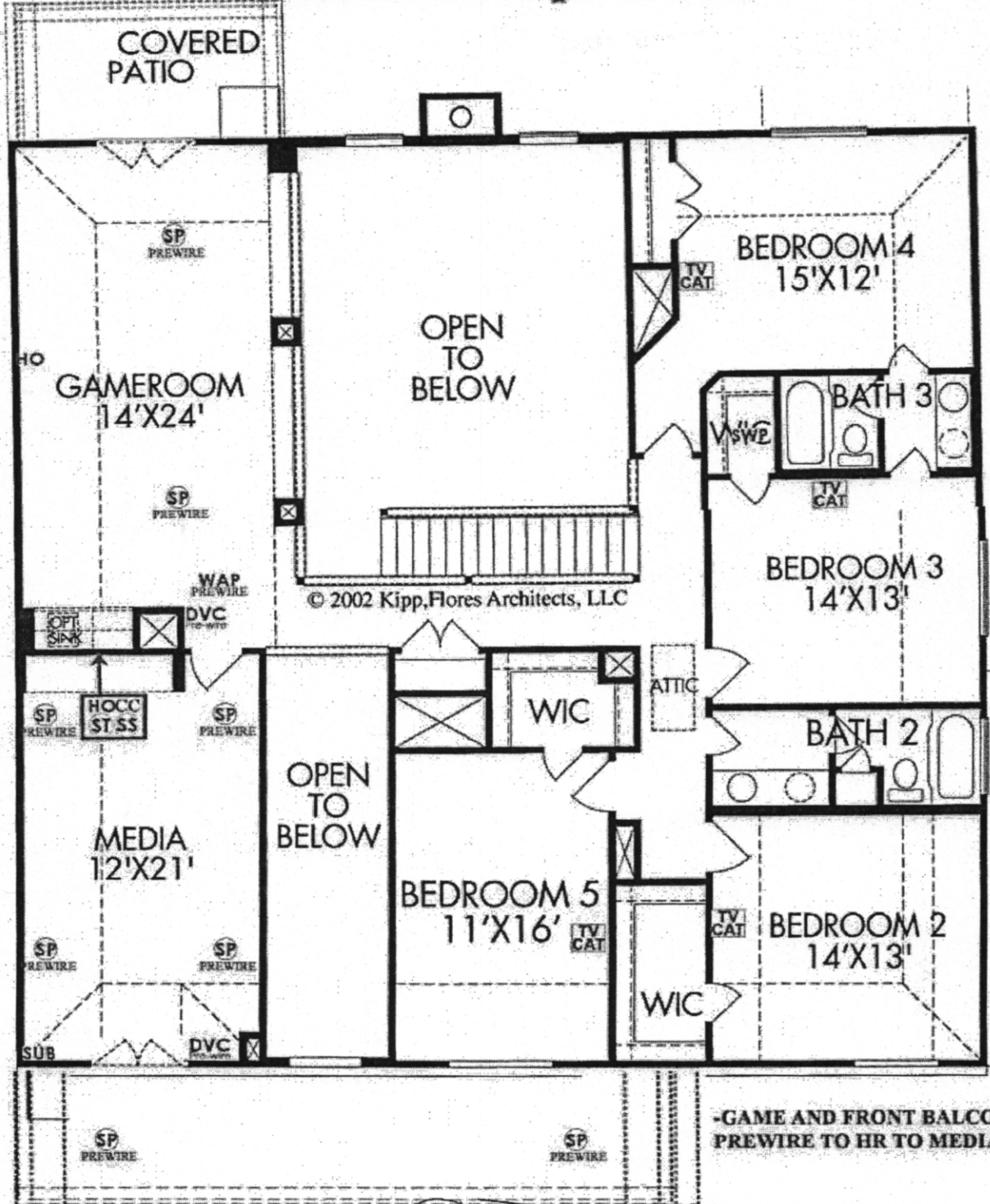
- SUB - Subwoofer (1 RG6)
- SS - Surround Sound Prewire Homerun
- DVC - Digital Volume Control Prewire Only
- ST - Stereo Speaker Prewire Homerun
- HOM - HDMI Bundle (2 HDMI/2 CAT5e Trimmed)(Conduit)
- HO - HDMI Bundle Homerun Locations
- PROJ - Projector Bundle (2 HDMI/ 2 CAT5e Trimmed)(Conduit)
- SWP - Structured Wiring Panel
- PK - Projector Bundle Homerun
- EO - Electrical Outlet (110 Volt)

- CAM - Camera Location
- CC - Camera NVR Homerun
- CO - Conduit (installed next to electrical)
- CH - Conduit Homerun
- 5R - 5 Runs of Cat5e Bundled
- 5RH - 5 Runs of Cat5e Homerun
- MD - Motion Detector
- KP - Keypad
- GB - Glass Break Detector
- LZ - Lighting Zone (1 Light switch)
- AP - Home Automation Panel Prewire

- WAP - Wireless Access Point Prewire (1 CAT5e)
- VAC - Central Vac Master Location
- INT - Intercom Station Prewire
- IMU - Intercom Master Unit
- IS - In-Space
- IR - IR Control
- OH - Overhead Garage Switch
- NH - Hammer Height
- SWP2 - Structured Wiring Panel 2
- DAT - DATA for automation use

© 2002 Kipp,Flores Architects, LLC

7018 River Rapids Lane



[Signature]
Home Buyer Signature

- TV - TV Location (1 RG6)
- CAT - Phone or DATA (1 CAT5e)
- ENT - Home Entertainment (1 CAT5e/ 2 RG6)
- HO - Home Outlet (2 CAT5e/1 RG6)
- UNV - Universal Outlet (2 CAT5e/2 RG6)
- NO - Network Outlet (3 CAT5e/ 1 RG6)
- SP - Speaker Prewire
- SP - In-Ceiling Speaker
- SP - In-Wall Speaker
- AS - Atmos Speaker Prewire

- SUB - Subwoofer (1 RG6)
- SS - Surround Sound Prewire Homerun
- DVC - Digital Volume Control Prewire Only
- SS - Stereo Speaker Prewire Homerun
- HDMI - HDMI Bundle (2 HDMI/2 CAT5e Trimmed)(Conduit)
- PROJ - Projector Bundle (2 HDMI/ 2 CAT5e Trimmed)(Conduit)
- SWP - Structured Wiring Panel
- PS - Projector Bundle Homerun
- EO - Electrical Outlet (110 Volt)

- Cam - Camera Location
- Cam - Camera NVR Homerun
- Con - Conduit (Installed next to electrical)
- Con - Conduit Homerun
- 5 - 5 Runs of Cat5e Bundled
- 5 - 5 Runs of Cat5e Homerun
- MD - Motion Detector
- KP - Keypad
- GB - Glass Break Detector
- LZ - Lighting Zone (1 Light switch)
- AP - Home Automation Panel Prewire

- WAP - Wireless Access Point Prewire (1 CAT5e)
- MAC - Central Vac Master Location
- INT - Intercom Station Prewire
- INT - Intercom Master Unit
- RS - Rock Speaker
- IR - IR Control
- OH - Overhead Garage Switch
- RH - Hammer Height
- SWP2 - Structured Wiring Panel 2
- DAT - DATA for automation use

Twin Falls - Estate
Meritage Estate Features

*Stucco by grade
walkway to door per plan*

7007 BRISTOL MEMORIAL DRIVE
SPRING, TX 77389
877-275-6374

Exterior Design Features

- James Hardie™ Fiber Cement Siding, Soffit & Trim
- Three-tone Exterior Paint Schemes
- Exterior Lighting at Front and Rear Door with Black Coach Lamp at Garage per plan
- 8' Thermatru Fiberglass Front Door w/ Satin Nickel "Dakota" Handleset per plan
- Kwikset™ "Satin Nickel" Deadbolt Locks - Exterior Doors
- Fully Fenced Back Yard with 6ft. Privacy Fence
- Sill Seal barrier at Exterior perimeter
- Fully Sodded Front & Side Yards to Fence with Front Landscape Package
- Irrigation system in front, side, and back yards
- Cast Stone Engraved Address Block
- Steel Garage Door with Opener
- 3 Exterior Hose Bibs
- Composite Shingles w/ 30 Year Limited Warranty
- 10'x10' Patio per plan *size*
- 8' Thermatru Full Lite Exterior Back Door per plan
- Full Brick, 1st Floor 4 Sides

Interior Design Features

- Low VOC Sherwin Williams™ textured Walls in Choice of 3 Colors and White Chip ceilings
- Stained Oak Stair Handrails and Newel Posts with Iron Spindles up to the second floor (per plan) *- Gameroom*
- 8' Rockport Doors with Kwikset™ Satin Nickel "Cove" Doorknobs on first floor per plan
- Honeywell Full Security System with One Key Pad
- Ceramic Tile Flooring in Entry and Utility Room
- 25 oz. Shaw™ Carpet with 3/8" Carpet Pad
- Direct Vent Fireplace, Tile Hearth and Wood Mantle
- Rounded Sheetrock Corners in Accent Areas
- Lighting in Brushed Nickel Finish
- Decora light switches throughout the home
- Single Stage Crown at Family Room and Dining Room *Crown molding*

Luxurious Master Suites

- Timberlake™ Flat Panel Maple Cabinets
- Moen® "Brantford" Chrome Fixtures
- Separate Garden Tub w/ Ceramic Tile skirt and Shower with Ceramic Tile Surround per plan
- Solid Surface Granite (Group 1) Master Bath Vanity
- Roomy Walk-In Closets
- Ceramic Tile Flooring in Entire Master Bath
- Lighting in Brushed Nickel Finish
- Hi/Hi Vanity Cabinets

Spacious Kitchens

- 42" Timberlake™ Flat Panel Maple Cabinets
- Ceramic Tile Backsplash Laid Straight
- Solid Surface Granite Countertops (Group 1)
- DuPure™ Water Filtration System at Kitchen Sink
- Ceramic Tile Flooring in Kitchen and Breakfast
- Undermount Sink w/ Moen® "Camerist" Chrome Faucet
- 1/3 HP Garbage Disposal
- Recessed Can Lighting per plan
- Stainless Steel Whirlpool™ Appliances:
 - 30" Electric Oven with Self Clean Feature
 - 4 Cycle Brilliant Clean Dishwasher
 - Touch Pad Control OTR Microwave with Turntable, Vented to Outside
 - Gas Cooktop

Quality Construction

- Code Certified Windstorm Bracing
- Carrier® 15 SEER HVAC System w/ Heat Pump and Puron® Refrigerant
- R-21 Roof deck open cell Foam Insulation
- R-13 Foam Walls
- R-6 Ductwork with Mastic Seal
- Single 40 gal. Electric Water Heater up to 2.5 Baths, Two 40 gal. Electric Water Heater with 3+ Baths
- Tyvek® House Wrap
- Engineered Post Tension designed Foundation
- Electric Dryer Connections
- Block and wire all bedrooms, family room and gameroom per plan
- 10 year limited structural warranty
- 1-2 year builder warranty
- Borate Termite Preventative Treatment by HomeTeam® Pest Defense
- Taexx™ Built in Pest Control System by HomeTeam® Pest Defense

Energy-Efficient and Safety Features

- Spray-foam insulation for energy savings and better health
- Low-E3 windows for 15% less heating/cooling costs
- ENERGY STAR® appliances for lower energy costs
- CFL lighting for about 75% less energy costs
- Fresh-air management system for clean, fresh air circulation
- Minimum SEER 15 HVAC helps save energy and money

Back wall

Ceiling fan? Cable?

?

Home, features, and community information are subject to change, and homes to prior sale, at any time without notice or obligation. Additionally, deviations and variations may exist in any constructed home, including, without limitation: (i) substitution of materials and equipment of substantially equal or better quality; (ii) minor style, lot orientation, and color changes; (iii) minor variances in square footage and in room and space dimensions, and in window, door, utility outlet, and other improvement locations; (iv) changes as may be required by any state, federal, county, or local governmental authority in order to accommodate requested selections and/or options; and (v) value engineering and field changes. Actual features included in any home are limited in all events to the specific terms set forth in the contract for such home. Any square footages and dimensions are approximate and may vary in construction and depending on the standard of measurement used, engineering and municipal requirements, or other site-specific conditions. All promotional, marketing, and advertising estimates and claims related to energy savings or performance are created exclusively by third party suppliers, rating services, utility companies, and/or certified auditors, based on U.S. Department of Energy methodology and average energy use and costs. Actual energy savings and performance of any home or any of its features may vary widely, and may be more or less than indicated savings and performance, depending on the personal energy consumption choices of the occupants and changes in energy provider rates and programs. See sales associate for additional details. Meritage Homes is a registered trademark of Meritage Homes Corporation. ©2012 Meritage Homes Corporation. All rights reserved. REVISED 3/27/15. EHome 4/27/15.

