



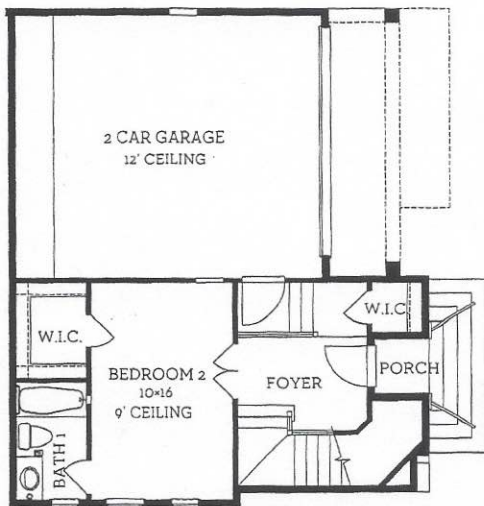
# INTOWN

— HOMES —

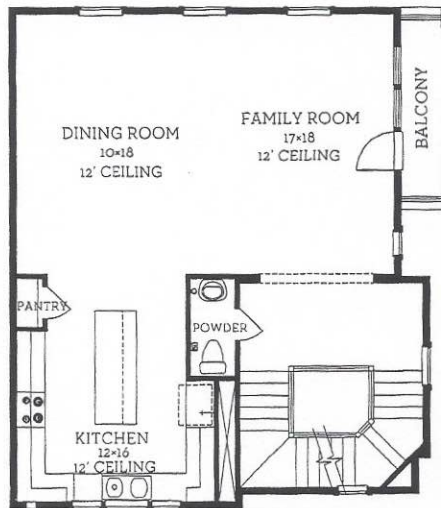
1203 E 28th St.

2,410 sq. ft.

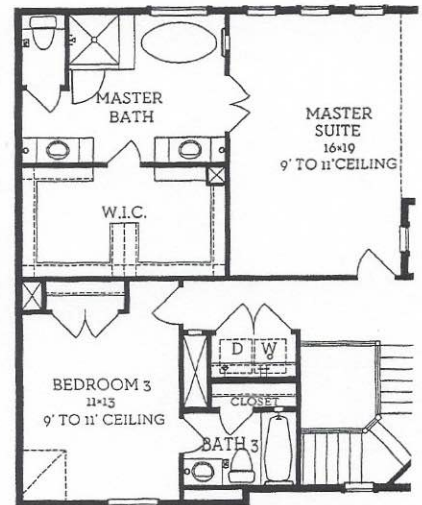
3 bed / 3.5 bath



**First Floor**  
459 sq.ft.



**Second Floor**  
988 sq.ft.



**Third Floor**  
963 sq.ft.

All prices, features and plans are subject to change without notice. Square footage is approximate. No representation or warranties either expressed or implied are made as to the accuracy of the information herein or with respect to the suitability, usability, merchantability or conditions of any property herein described. All rights Reserved. InTownHomes 2014



