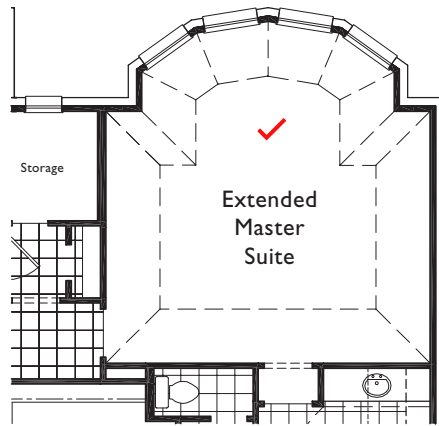
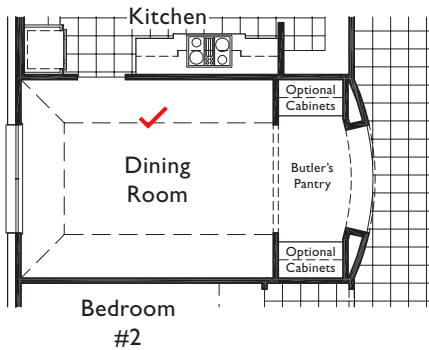


All options are marked with a RED Check. Base sq. ft per builder floor plan is 3786.
 Additional sq ft shown per option added is noted in RED for a total of 4481 sq ft.

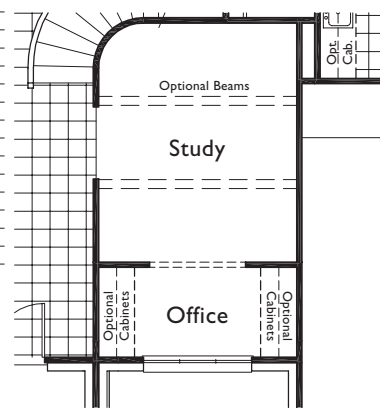
PLAN 296



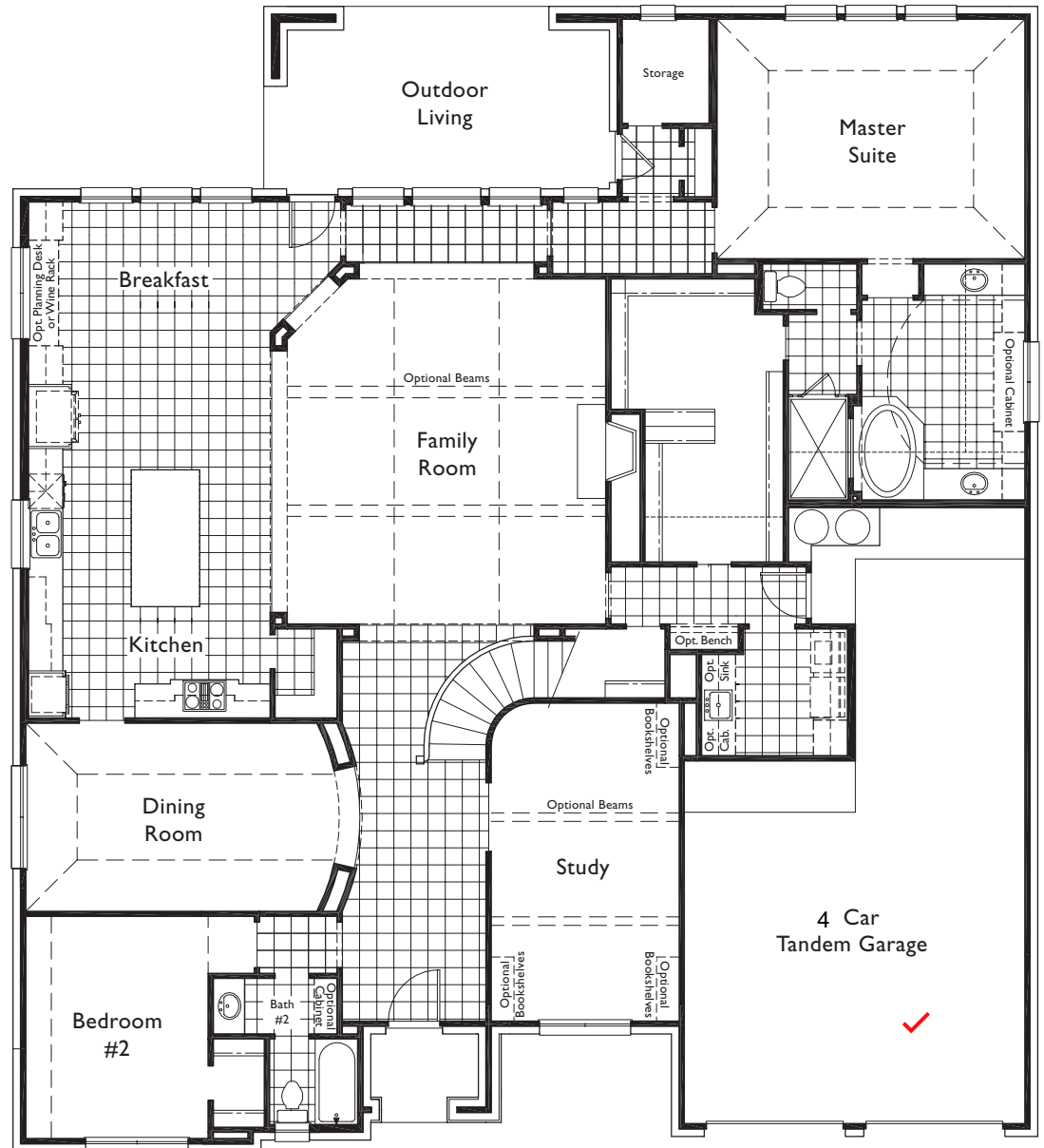
Bay Window in Master Suite Option
 1225-01 **59 sq. ft**



Butler's Pantry Option
 1450-70

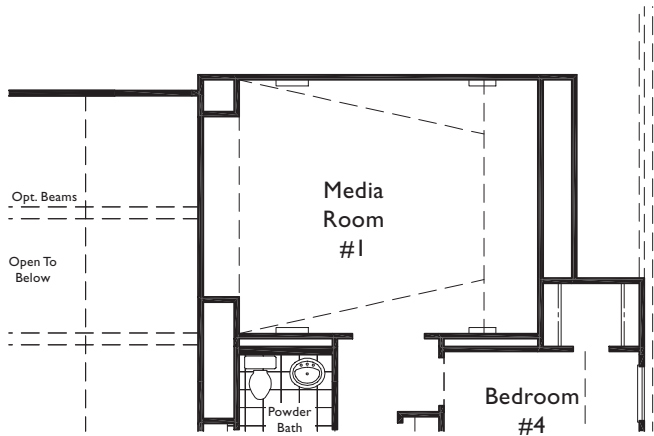


Office Area in Study Option
 1200-25

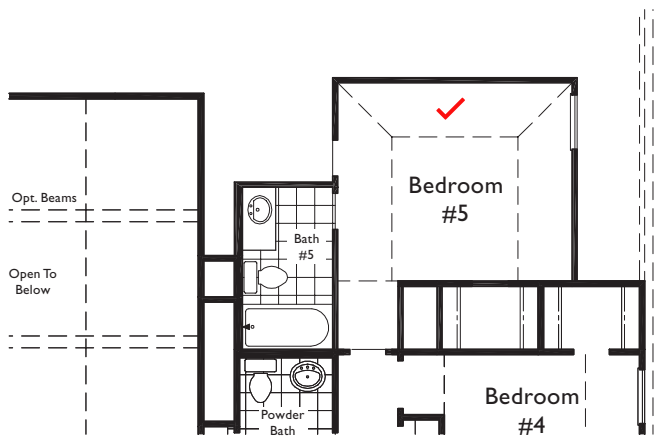


Lower Level

4th bay of garage not shown on floor plan. It is 3 side by side with middle bay as the tandem 4th bay.

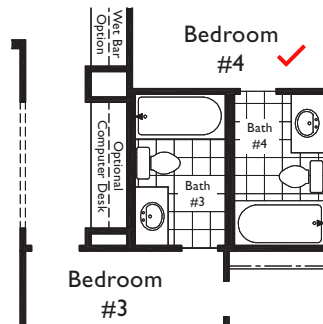


Media Room #1 Option
Upper Level
1100-00



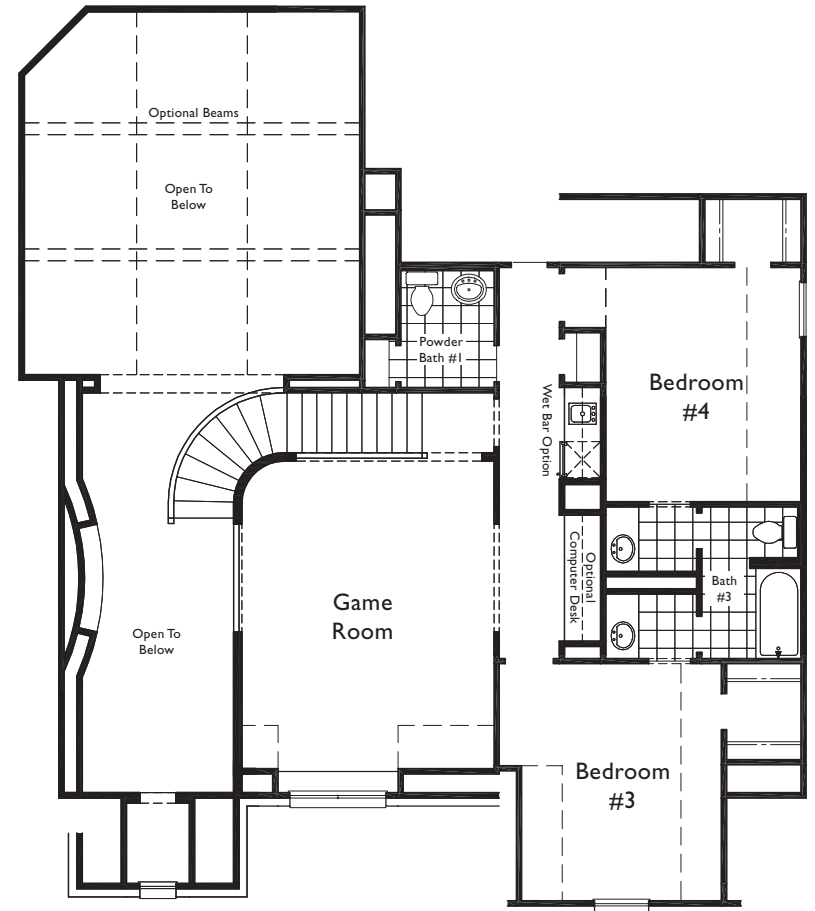
Bedroom #5 ~ Full Bath Option
1250-40

247 sq ft.



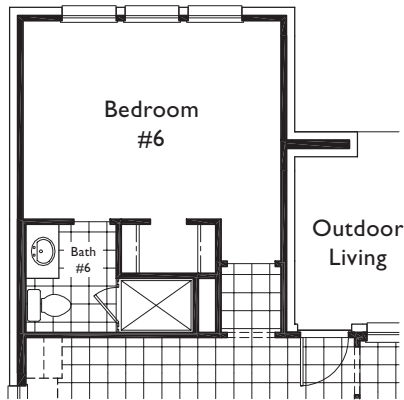
2 Full Baths Option
in lieu of Jack & Jill Bath
1300-02

127 sq ft.

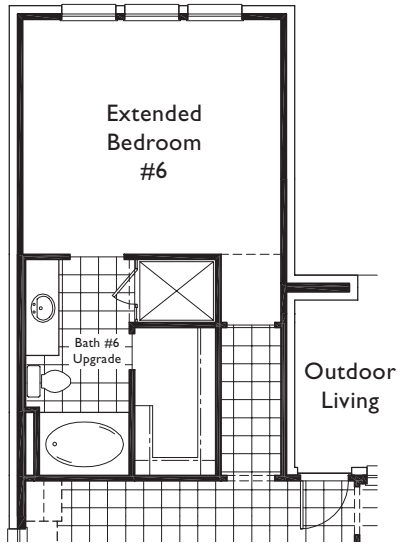


Upper Level

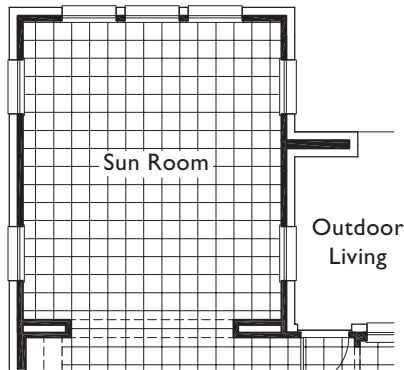
PLAN 296
Lower Level Options



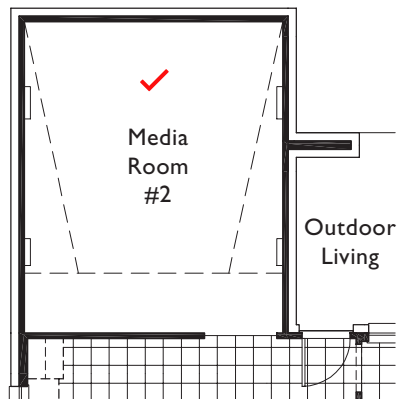
Bedroom #6 ~ Full Bath Option
1250-90



Extended Bedroom #6 Upgraded Full Bath Option
1250-93

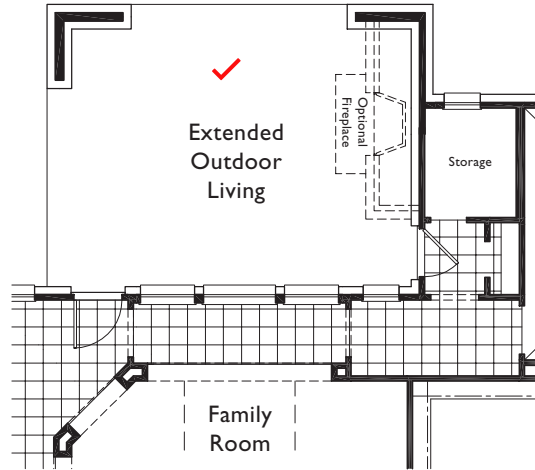


Sun Room Option
1120-00

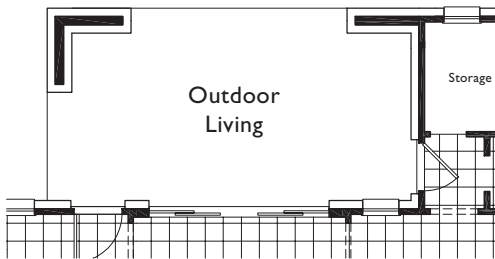


Media Room #2 Option Lower Level
1100-02

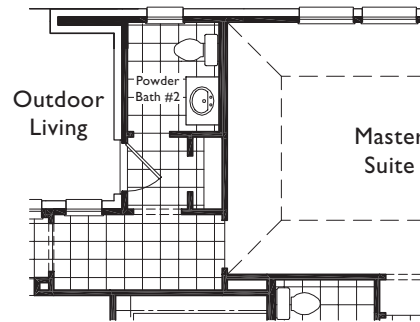
262 sq. ft.



Extended Outdoor Living Option
1500-25

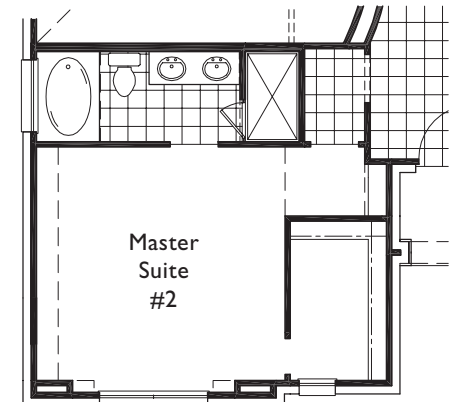


Sliding Doors in Family Room Option
1400-52



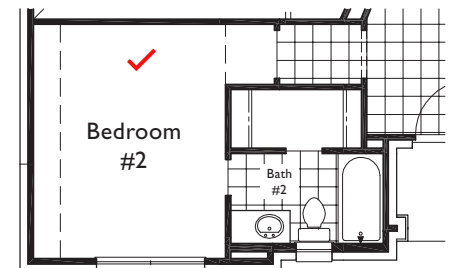
Powder Bath Option
2500-63

Note: Powder Bath is forced with Master Suite #2 Option



Master Suite #2 ~ Full Bath Option in lieu of Bedroom #2 ~ Full Bath
1250-03

Note: Powder Bath Option is forced with this option



Private Bath #2 ~ Powder Bath Option
2500-41

Note: Powder Bath is forced with Private Bath #2 Option

