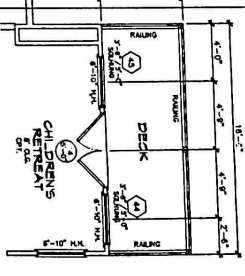


APPROX. SQUARE FOOTAGES

REAR PORCH	3,000 S.F.	REAR
TOTAL FLOOR	4,000 S.F.	REAR
TOTAL LAND	12,000 S.F.	REAR
REAR PORCH (REV. A)	1,000 S.F.	REAR
REAR PORCH (REV. B)	1,000 S.F.	REAR
REAR PORCH (REV. C)	1,000 S.F.	REAR
REAR PORCH (REV. D)	1,000 S.F.	REAR
REAR PORCH (REV. E)	1,000 S.F.	REAR
REAR PORCH (REV. F)	1,000 S.F.	REAR
REAR PORCH (REV. G)	1,000 S.F.	REAR
REAR PORCH (REV. H)	1,000 S.F.	REAR
REAR PORCH (REV. I)	1,000 S.F.	REAR
REAR PORCH (REV. J)	1,000 S.F.	REAR
REAR PORCH (REV. K)	1,000 S.F.	REAR
REAR PORCH (REV. L)	1,000 S.F.	REAR
REAR PORCH (REV. M)	1,000 S.F.	REAR
REAR PORCH (REV. N)	1,000 S.F.	REAR
REAR PORCH (REV. O)	1,000 S.F.	REAR
REAR PORCH (REV. P)	1,000 S.F.	REAR
REAR PORCH (REV. Q)	1,000 S.F.	REAR
REAR PORCH (REV. R)	1,000 S.F.	REAR
REAR PORCH (REV. S)	1,000 S.F.	REAR
REAR PORCH (REV. T)	1,000 S.F.	REAR
REAR PORCH (REV. U)	1,000 S.F.	REAR
REAR PORCH (REV. V)	1,000 S.F.	REAR
REAR PORCH (REV. W)	1,000 S.F.	REAR
REAR PORCH (REV. X)	1,000 S.F.	REAR
REAR PORCH (REV. Y)	1,000 S.F.	REAR
REAR PORCH (REV. Z)	1,000 S.F.	REAR



SECOND FLOOR PLAN
SCALE 1/8"=1'-0"

1/3/201

2ND FLOOR PLAN

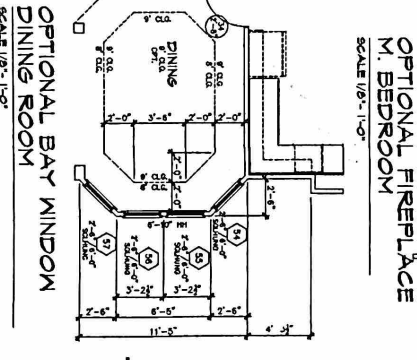
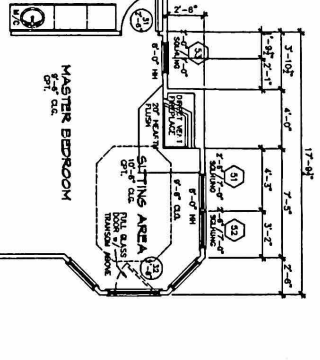
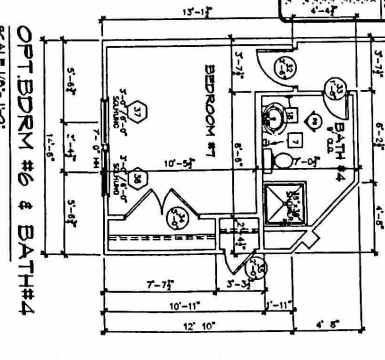
- 1 STAIRS WITH ACCESS
- 2 STAIRS WITH ACCESS
- 3 STAIRS WITH ACCESS
- 4 STAIRS WITH ACCESS
- 5 STAIRS WITH ACCESS
- 6 STAIRS WITH ACCESS
- 7 STAIRS WITH ACCESS
- 8 STAIRS WITH ACCESS
- 9 STAIRS WITH ACCESS
- 10 STAIRS WITH ACCESS
- 11 STAIRS WITH ACCESS
- 12 STAIRS WITH ACCESS
- 13 STAIRS WITH ACCESS
- 14 STAIRS WITH ACCESS
- 15 STAIRS WITH ACCESS
- 16 STAIRS WITH ACCESS
- 17 STAIRS WITH ACCESS
- 18 STAIRS WITH ACCESS
- 19 STAIRS WITH ACCESS
- 20 STAIRS WITH ACCESS
- 21 STAIRS WITH ACCESS
- 22 STAIRS WITH ACCESS
- 23 STAIRS WITH ACCESS
- 24 STAIRS WITH ACCESS
- 25 STAIRS WITH ACCESS
- 26 STAIRS WITH ACCESS
- 27 STAIRS WITH ACCESS
- 28 STAIRS WITH ACCESS
- 29 STAIRS WITH ACCESS
- 30 STAIRS WITH ACCESS
- 31 STAIRS WITH ACCESS
- 32 STAIRS WITH ACCESS
- 33 STAIRS WITH ACCESS
- 34 STAIRS WITH ACCESS
- 35 STAIRS WITH ACCESS
- 36 STAIRS WITH ACCESS
- 37 STAIRS WITH ACCESS
- 38 STAIRS WITH ACCESS
- 39 STAIRS WITH ACCESS
- 40 STAIRS WITH ACCESS
- 41 STAIRS WITH ACCESS
- 42 STAIRS WITH ACCESS
- 43 STAIRS WITH ACCESS
- 44 STAIRS WITH ACCESS
- 45 STAIRS WITH ACCESS
- 46 STAIRS WITH ACCESS
- 47 STAIRS WITH ACCESS
- 48 STAIRS WITH ACCESS
- 49 STAIRS WITH ACCESS
- 50 STAIRS WITH ACCESS
- 51 STAIRS WITH ACCESS
- 52 STAIRS WITH ACCESS
- 53 STAIRS WITH ACCESS
- 54 STAIRS WITH ACCESS
- 55 STAIRS WITH ACCESS
- 56 STAIRS WITH ACCESS
- 57 STAIRS WITH ACCESS
- 58 STAIRS WITH ACCESS
- 59 STAIRS WITH ACCESS
- 60 STAIRS WITH ACCESS
- 61 STAIRS WITH ACCESS
- 62 STAIRS WITH ACCESS
- 63 STAIRS WITH ACCESS
- 64 STAIRS WITH ACCESS
- 65 STAIRS WITH ACCESS
- 66 STAIRS WITH ACCESS
- 67 STAIRS WITH ACCESS
- 68 STAIRS WITH ACCESS
- 69 STAIRS WITH ACCESS
- 70 STAIRS WITH ACCESS
- 71 STAIRS WITH ACCESS
- 72 STAIRS WITH ACCESS
- 73 STAIRS WITH ACCESS
- 74 STAIRS WITH ACCESS
- 75 STAIRS WITH ACCESS
- 76 STAIRS WITH ACCESS
- 77 STAIRS WITH ACCESS
- 78 STAIRS WITH ACCESS
- 79 STAIRS WITH ACCESS
- 80 STAIRS WITH ACCESS
- 81 STAIRS WITH ACCESS
- 82 STAIRS WITH ACCESS
- 83 STAIRS WITH ACCESS
- 84 STAIRS WITH ACCESS
- 85 STAIRS WITH ACCESS
- 86 STAIRS WITH ACCESS
- 87 STAIRS WITH ACCESS
- 88 STAIRS WITH ACCESS
- 89 STAIRS WITH ACCESS
- 90 STAIRS WITH ACCESS
- 91 STAIRS WITH ACCESS
- 92 STAIRS WITH ACCESS
- 93 STAIRS WITH ACCESS
- 94 STAIRS WITH ACCESS
- 95 STAIRS WITH ACCESS
- 96 STAIRS WITH ACCESS
- 97 STAIRS WITH ACCESS
- 98 STAIRS WITH ACCESS
- 99 STAIRS WITH ACCESS
- 100 STAIRS WITH ACCESS

PRINCETON

LEGEND HOME CORPORATION
10410 WINDREME BLVD.
HOUSTON, TEXAS 77065
281-471-1000
281-471-1000
FAX 281-671-0060
www.legendhomecorp.com

OBalORCUS
TOP/01/01/01/01
2ND FLOOR PLAN
400B
SCALE 1/8"=1'-0"

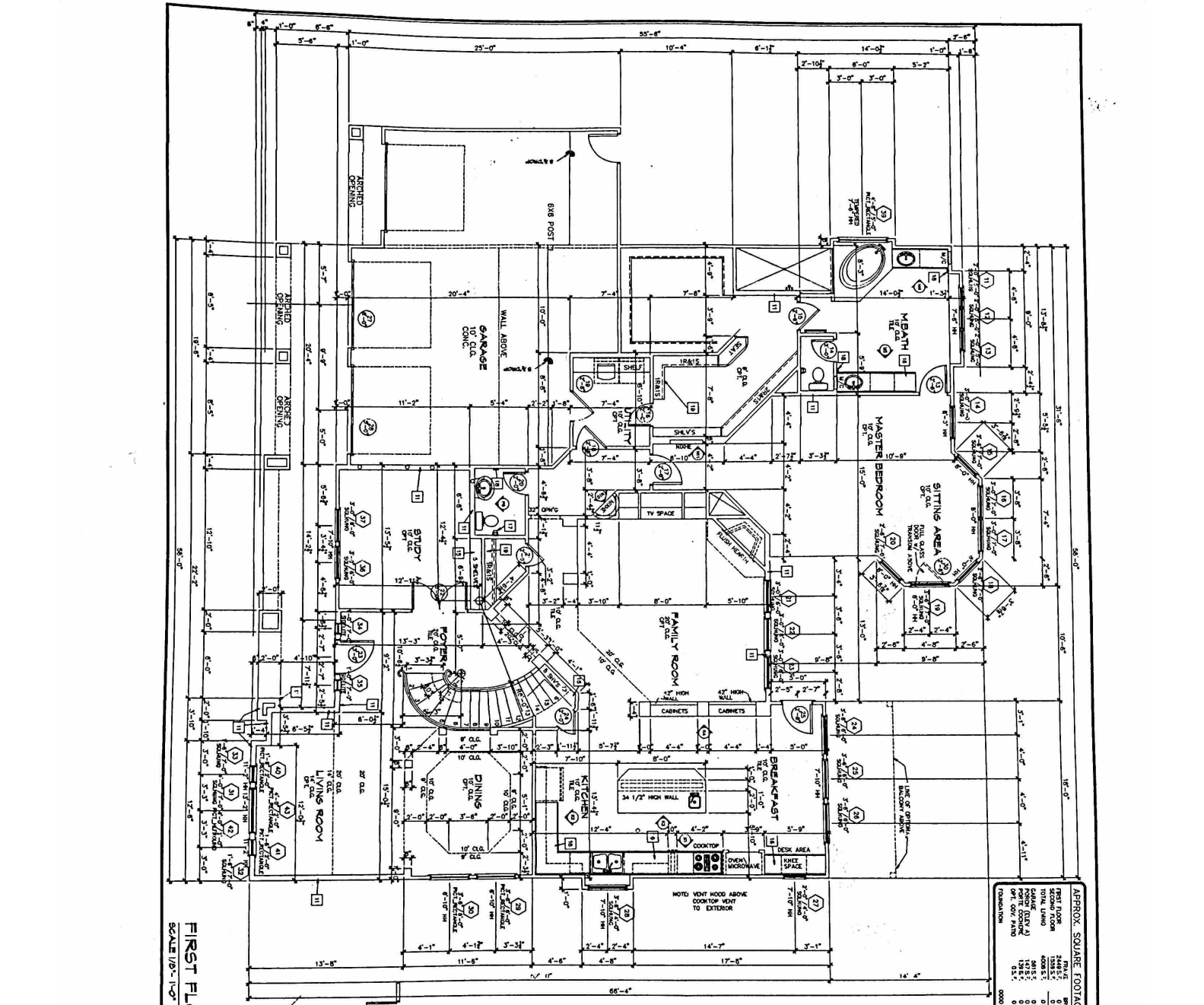
- 1 PARTIAL AISC ACCESS
- 2 PARTIAL DEEP STAIRS
- 3 WALKWAY MATERIAL TO BE 3/4" MIN. RAMPING WITH TREADS TO BE 1" MIN. W/ 1/4" GAPS
- 4 AIRC. SUPPLY REGISTER ON 1/2" MIN. GAPS
- 5 HORIZONTAL AIR SUPPLY REG. (LOCATION MAY VARY PER CITY CODE)
- 6 AIRC. SUPPLY REGISTER ON 1/2" MIN. GAPS
- 7 PARTIAL DEEP STAIRS
- 8 PARTIAL AISC ACCESS
- 9 LOCAL LIGHT FIXTURE
- 10 DOUBLE SINK AND SPOUTS
- 11 1" DIA. UPPER VENT TO OUTSIDE AIR
- 12 2" DIA. LOWER VENT TO OUTSIDE AIR
- 13 2" DIA. VENT TO OUTSIDE AIR
- 14 2" DIA. VENT TO OUTSIDE AIR
- 15 2" DIA. VENT TO OUTSIDE AIR
- 16 2" DIA. VENT TO OUTSIDE AIR
- 17 2" DIA. VENT TO OUTSIDE AIR
- 18 2" DIA. VENT TO OUTSIDE AIR
- 19 2" DIA. VENT TO OUTSIDE AIR
- 20 2" DIA. VENT TO OUTSIDE AIR
- 21 2" DIA. VENT TO OUTSIDE AIR
- 22 2" DIA. VENT TO OUTSIDE AIR
- 23 2" DIA. VENT TO OUTSIDE AIR
- 24 2" DIA. VENT TO OUTSIDE AIR
- 25 2" DIA. VENT TO OUTSIDE AIR
- 26 2" DIA. VENT TO OUTSIDE AIR
- 27 2" DIA. VENT TO OUTSIDE AIR
- 28 2" DIA. VENT TO OUTSIDE AIR
- 29 2" DIA. VENT TO OUTSIDE AIR
- 30 2" DIA. VENT TO OUTSIDE AIR
- 31 2" DIA. VENT TO OUTSIDE AIR
- 32 2" DIA. VENT TO OUTSIDE AIR
- 33 2" DIA. VENT TO OUTSIDE AIR
- 34 2" DIA. VENT TO OUTSIDE AIR
- 35 2" DIA. VENT TO OUTSIDE AIR
- 36 2" DIA. VENT TO OUTSIDE AIR
- 37 2" DIA. VENT TO OUTSIDE AIR
- 38 2" DIA. VENT TO OUTSIDE AIR
- 39 2" DIA. VENT TO OUTSIDE AIR
- 40 2" DIA. VENT TO OUTSIDE AIR
- 41 2" DIA. VENT TO OUTSIDE AIR
- 42 2" DIA. VENT TO OUTSIDE AIR
- 43 2" DIA. VENT TO OUTSIDE AIR
- 44 2" DIA. VENT TO OUTSIDE AIR
- 45 2" DIA. VENT TO OUTSIDE AIR
- 46 2" DIA. VENT TO OUTSIDE AIR
- 47 2" DIA. VENT TO OUTSIDE AIR
- 48 2" DIA. VENT TO OUTSIDE AIR
- 49 2" DIA. VENT TO OUTSIDE AIR
- 50 2" DIA. VENT TO OUTSIDE AIR
- 51 2" DIA. VENT TO OUTSIDE AIR
- 52 2" DIA. VENT TO OUTSIDE AIR
- 53 2" DIA. VENT TO OUTSIDE AIR
- 54 2" DIA. VENT TO OUTSIDE AIR
- 55 2" DIA. VENT TO OUTSIDE AIR
- 56 2" DIA. VENT TO OUTSIDE AIR
- 57 2" DIA. VENT TO OUTSIDE AIR
- 58 2" DIA. VENT TO OUTSIDE AIR
- 59 2" DIA. VENT TO OUTSIDE AIR
- 60 2" DIA. VENT TO OUTSIDE AIR
- 61 2" DIA. VENT TO OUTSIDE AIR
- 62 2" DIA. VENT TO OUTSIDE AIR
- 63 2" DIA. VENT TO OUTSIDE AIR
- 64 2" DIA. VENT TO OUTSIDE AIR
- 65 2" DIA. VENT TO OUTSIDE AIR
- 66 2" DIA. VENT TO OUTSIDE AIR
- 67 2" DIA. VENT TO OUTSIDE AIR
- 68 2" DIA. VENT TO OUTSIDE AIR
- 69 2" DIA. VENT TO OUTSIDE AIR
- 70 2" DIA. VENT TO OUTSIDE AIR
- 71 2" DIA. VENT TO OUTSIDE AIR
- 72 2" DIA. VENT TO OUTSIDE AIR
- 73 2" DIA. VENT TO OUTSIDE AIR
- 74 2" DIA. VENT TO OUTSIDE AIR
- 75 2" DIA. VENT TO OUTSIDE AIR
- 76 2" DIA. VENT TO OUTSIDE AIR
- 77 2" DIA. VENT TO OUTSIDE AIR
- 78 2" DIA. VENT TO OUTSIDE AIR
- 79 2" DIA. VENT TO OUTSIDE AIR
- 80 2" DIA. VENT TO OUTSIDE AIR
- 81 2" DIA. VENT TO OUTSIDE AIR
- 82 2" DIA. VENT TO OUTSIDE AIR
- 83 2" DIA. VENT TO OUTSIDE AIR
- 84 2" DIA. VENT TO OUTSIDE AIR
- 85 2" DIA. VENT TO OUTSIDE AIR
- 86 2" DIA. VENT TO OUTSIDE AIR
- 87 2" DIA. VENT TO OUTSIDE AIR
- 88 2" DIA. VENT TO OUTSIDE AIR
- 89 2" DIA. VENT TO OUTSIDE AIR
- 90 2" DIA. VENT TO OUTSIDE AIR
- 91 2" DIA. VENT TO OUTSIDE AIR
- 92 2" DIA. VENT TO OUTSIDE AIR
- 93 2" DIA. VENT TO OUTSIDE AIR
- 94 2" DIA. VENT TO OUTSIDE AIR
- 95 2" DIA. VENT TO OUTSIDE AIR
- 96 2" DIA. VENT TO OUTSIDE AIR
- 97 2" DIA. VENT TO OUTSIDE AIR
- 98 2" DIA. VENT TO OUTSIDE AIR
- 99 2" DIA. VENT TO OUTSIDE AIR
- 100 2" DIA. VENT TO OUTSIDE AIR



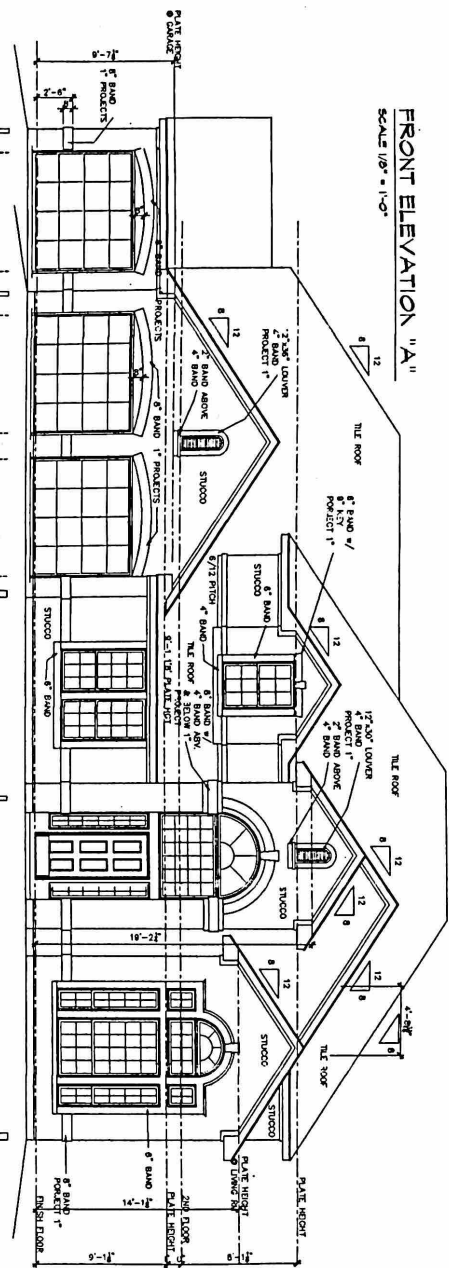
PRINCETON

LEGEND HOME CORPORATION
10416 WINDERMERE BLVD.
HOUSTON, TEXAS 77065
(281) 471-5000
FAX 791-6711-5060
www.princetonh.com

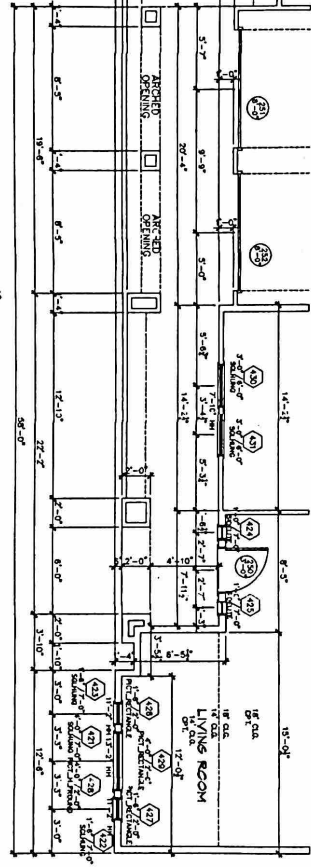
03diorcus	4008
1ST FLOOR PLAN	
1/8\"	1/8\"
A-2	



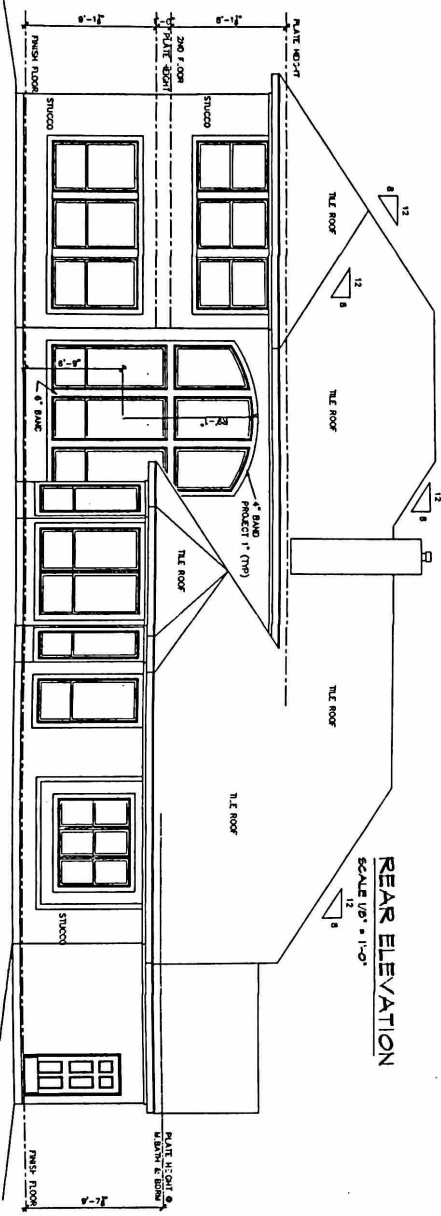
FRONT ELEVATION "A"
SCALE 1/8" = 1'-0"



FIRST FLOOR FRONT WALL PLAN



REAR ELEVATION
SCALE 1/8" = 1'-0"

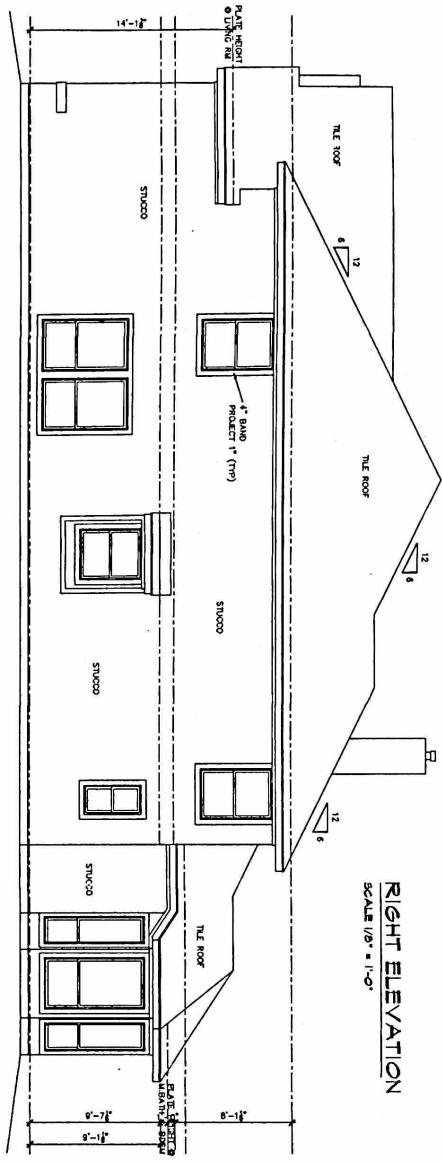


1/31/201
ELEVATION PER

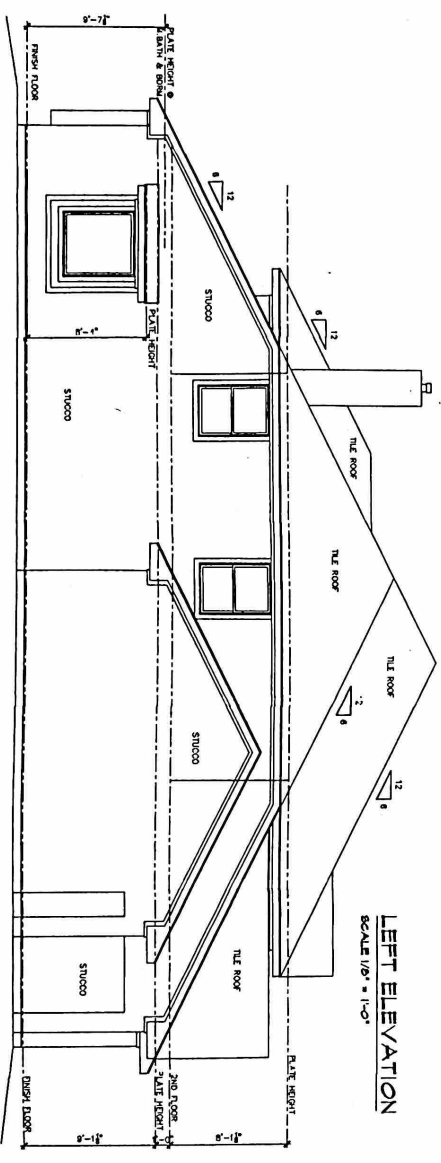
PRINCETON

LEGEND HOME CORPORATION
10410 WINDSORCRE ST #40
HOUSTON, TEXAS 77065
281-631-8000
FAX 281-671-6080
www.legendhomecorp.com

Osbaldo Arcus
TOPGON/OSBALDO
ELEVATION PER
DRAWN BY: SWS
DATE: 1/21/10
PROJECT: The Runfield
SHEET: A-4



RIGHT ELEVATION
SCALE 1/8" = 1'-0"



LEFT ELEVATION
SCALE 1/8" = 1'-0"

1/31/2011
ELEVATION L&R

PRINCETON

LEGEND HOME CORPORATION
10410 WINDERMERE BLVD.
HOUSTON, TEXAS 77065
281-471-5000
FAX 281-471-9060
www.legendhomecorp.com

NO. OF SHEETS	40005
TOTAL SHEETS	40005
DATE	1/31/2011
BY	DC
CHECKED BY	The Revue
SCALE	1/8" = 1'-0"
PROJECT	A-4A
DATE	1/31/2011
BY	DC
CHECKED BY	The Revue
SCALE	1/8" = 1'-0"
PROJECT	A-4A
DATE	1/31/2011
BY	DC
CHECKED BY	The Revue
SCALE	1/8" = 1'-0"
PROJECT	A-4A