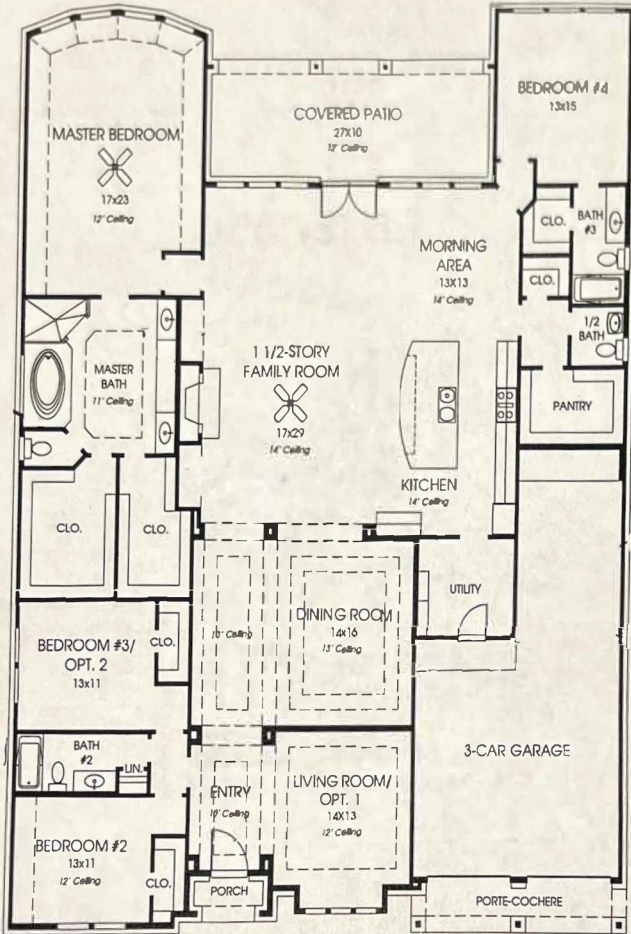


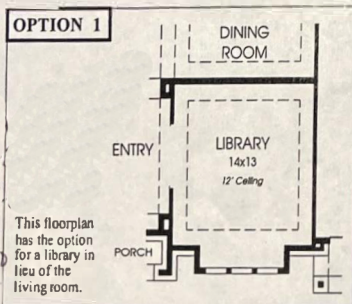
DESIGNS

Plan 3608

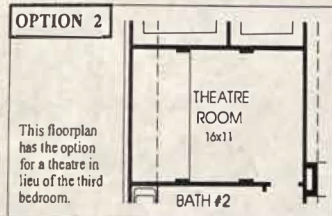
This home contains approximately 3,608 square feet and includes four bedrooms and three and a half baths.



OPTION 1



OPTION 2



Note: The options shown on this brochure are available at an additional cost.

This floorplan has a full 10-foot plate.

PERRY HOMES

Not included: inside keyed deadbolt locks, refrigerators, furnishings, drapery, plants, decorative items and all other personal property being used in model homes. Builder reserves the right to make changes in the plans and specifications, and to substitute material of similar quality. Room dimensions indicate approximate inside area measurements.

MARCH 2006 © 2006 Perry Homes (P)

