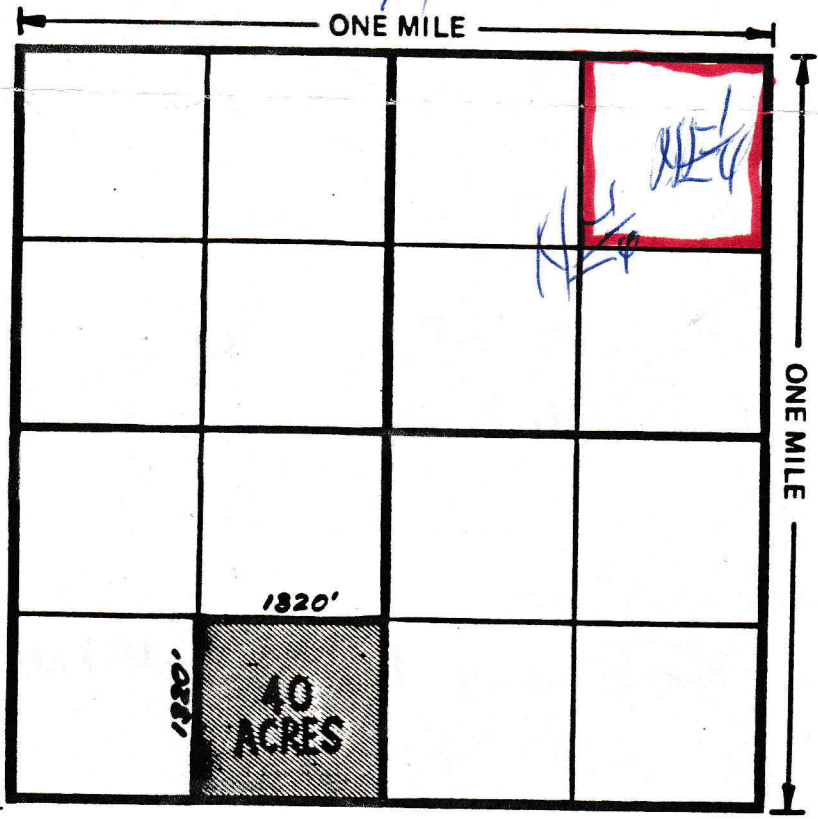


*Tx M R P Complex*

**PROPERTY LOCATION PLAT**

SECTION 7 TOWNSHIP \_\_\_\_\_ BLOCK 1  
 COUNTY Hudon STATE Tx



*40 acres is like 16 city blocks. If you go out of your house and walk to the corner and stare down the street--if you owned everything about you, if you could see four city blocks down the street...the fourth intersection would be the boundry of 40 acres.*

The above checkerboard square is a section of land of the ranch below. Approximately 640 Acres and each small square represents 40 Acres, approximately 1320' x 1320' feet, and a 30' foot road and utility right of way around each 40 Acres, so no one is land locked.

*5*