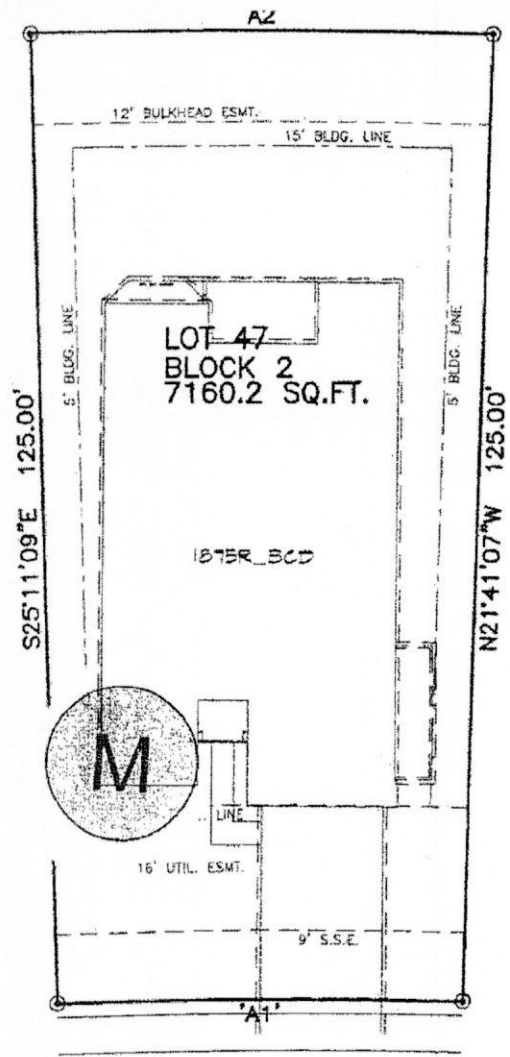


LD



3734 PANTANO COURT
(60' R.O.W.)
28' CONCRETE PAVEMENT

NOTES:
1. ALL BEARINGS SHOWN HEREON ARE BASED ON THE RECORDED PLAT.
2. THIS LOT DRAWING WAS PREPARED WITHOUT BENEFIT OF A TITLE REPORT. THERE MAY BE EASEMENTS, BUILDING LINES & OTHER MATTERS OF RECORD NOT SHOWN HEREON. SURVEYOR OR ALLPOINTS SERVICES CORP. IS NOT LIABLE FOR ANY DAMAGES THAT MAY INCUR IN ANY EVENT THE BUILDER BUILDS ANY IMPROVEMENTS CLOSER THAN 5.0' OR WITHIN AN EASEMENT.

LOT DRAWING
SCALE: 1 = 20'

© 2016, ALLPOINTS SERVICES CORP., ALL RIGHTS RESERVED

FOR: LEGEND HOMES
ADDRESS:
3734 PANTANO COURT
ALLPOINTS JOB #: LD107328 JG
LEGEND JOB #: 085-283



LOT 47, BLOCK 2,
LAKE SHORE HARBOUR, SECTION 6,
PLAT No. 20150273, PLAT RECORDS,
FORT BEND COUNTY, TEXAS

LEGEND
HOMES