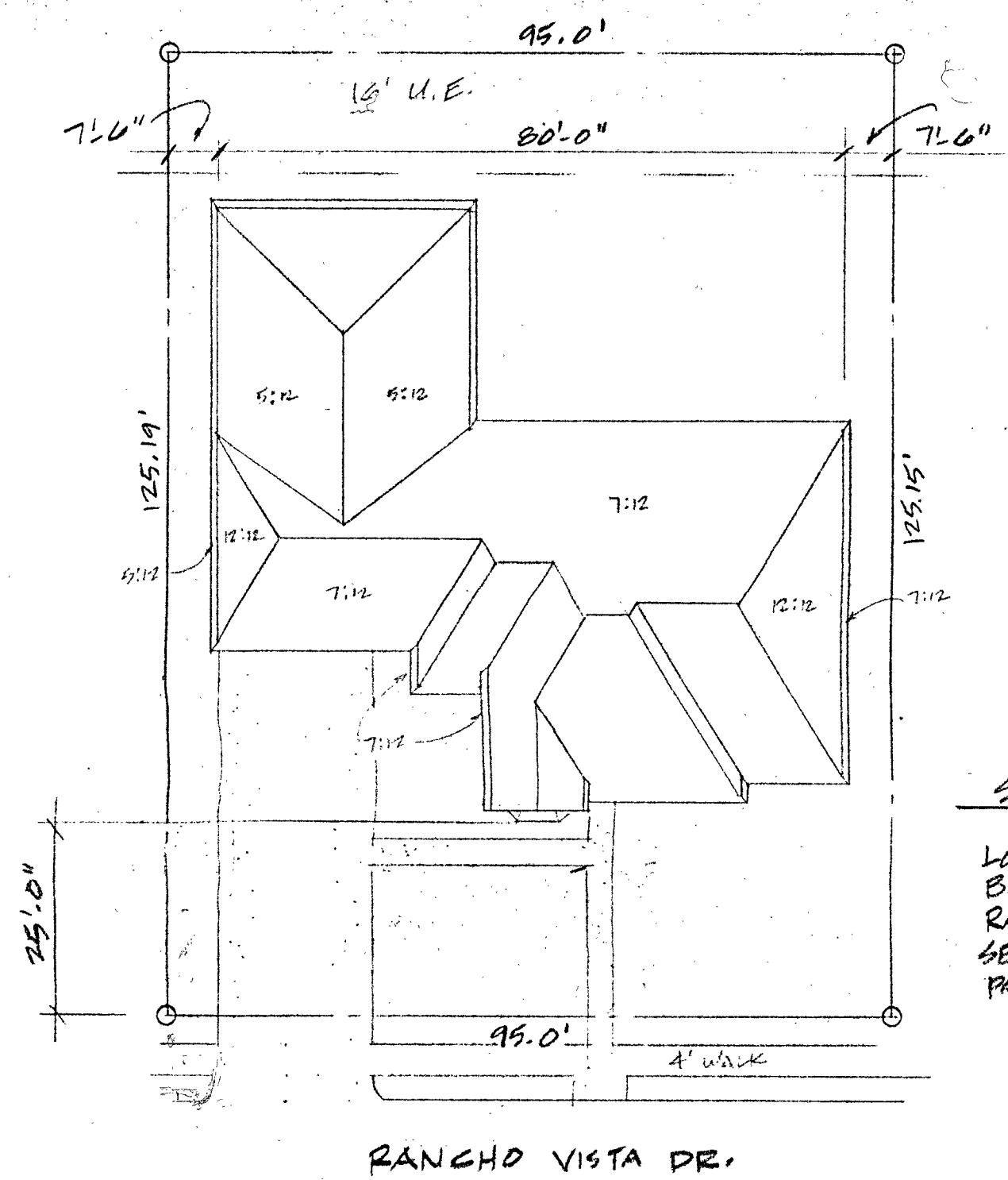


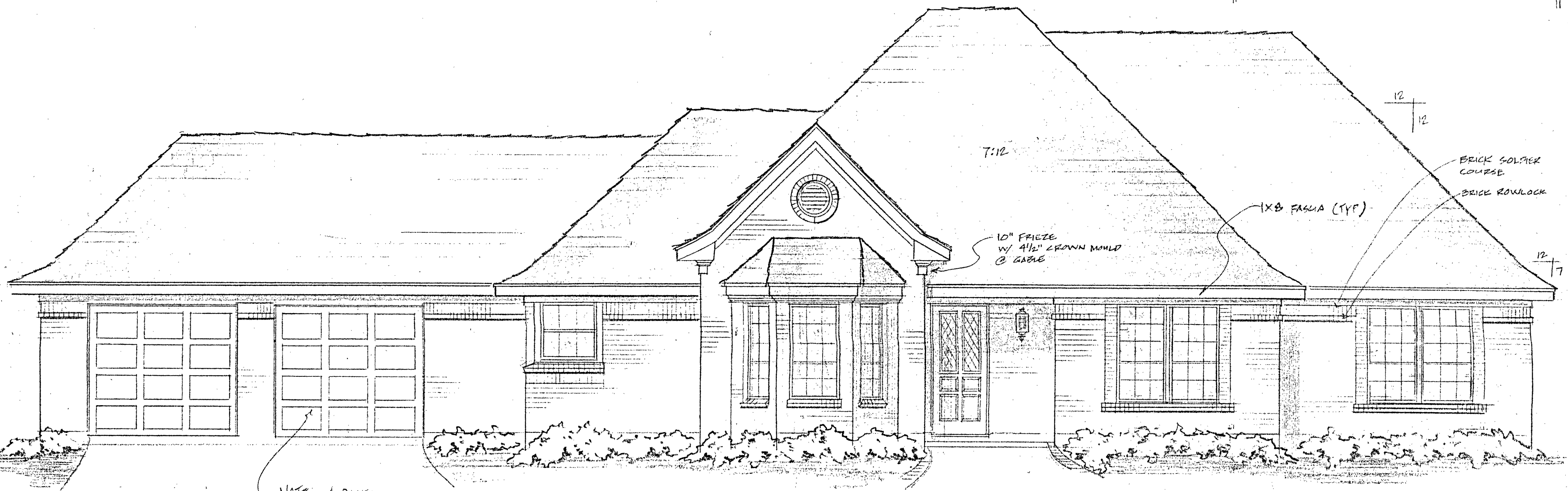
Handwritten notes in the top left corner, including "12/29/90" and "Charlie".



SITE PLAN 1" = 20'-0"

LOT 4
BLK 1
RANCHO VISTA
SECT. 1
PASADENA, TX.

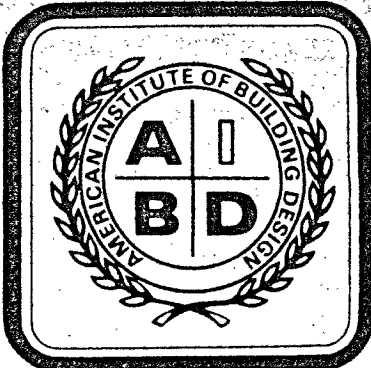
ARCHITECTURAL COMMITTEE
APPROVAL:
APPROVED _____ DATE 11-27-90
BY: *W. Buss*



FRONT ELEVATION

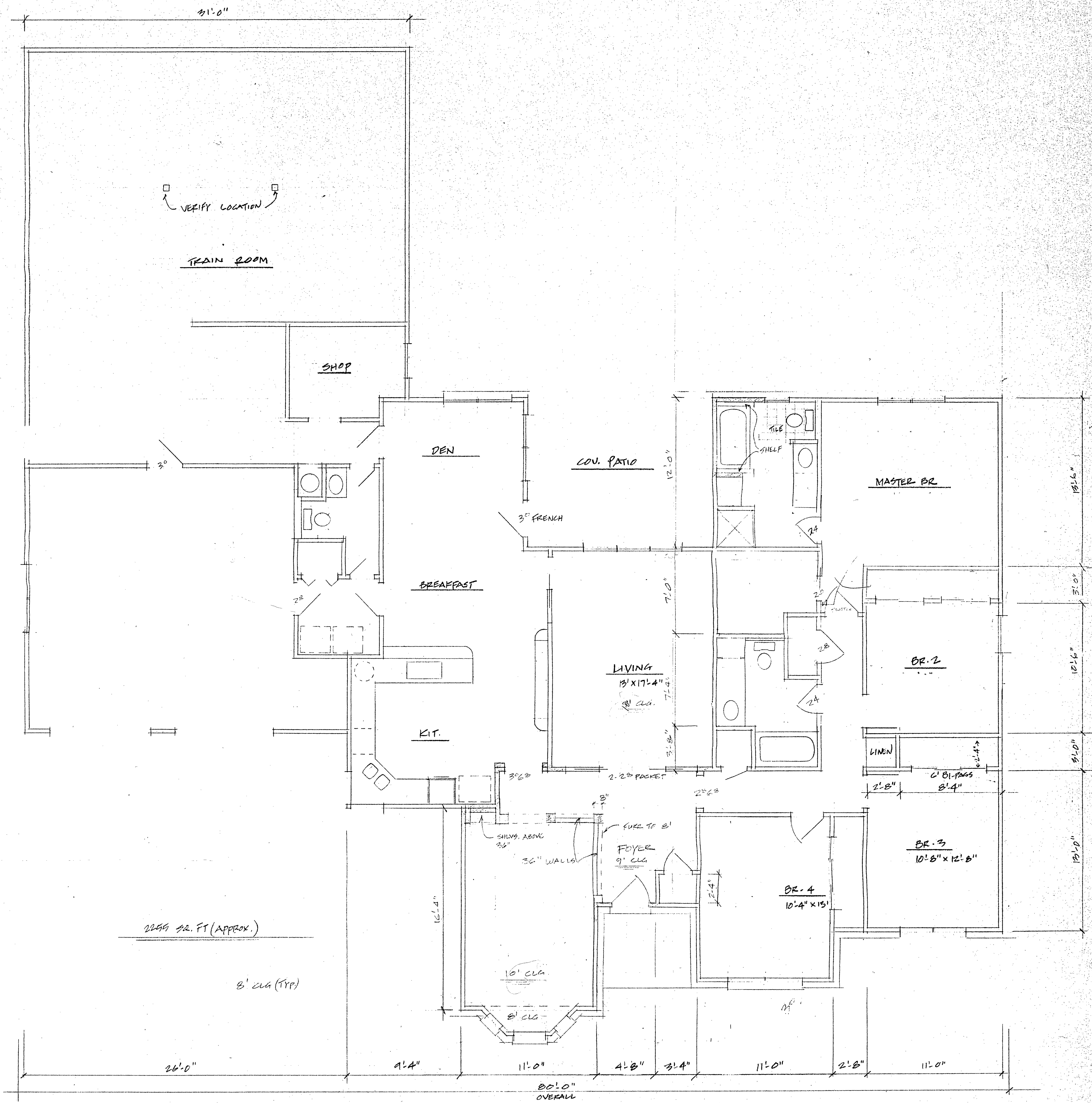
1/4" = 1'-0"

NOTE: 4 PANEL
W/ WINDOWS @ 2ND ROW



LARRY W. GARNETT & ASSOCIATES
BUILDING DESIGNERS
3515 PRESTON • SUITE 200 • PASADENA, TEXAS 77505 • (713) 487-0427

DATE 10-29-90
SCALE NOTED
JOB
DRAWN LWG



PRELIMINARY FLOOR PLAN

D-29-10 REV. 11-26-90