

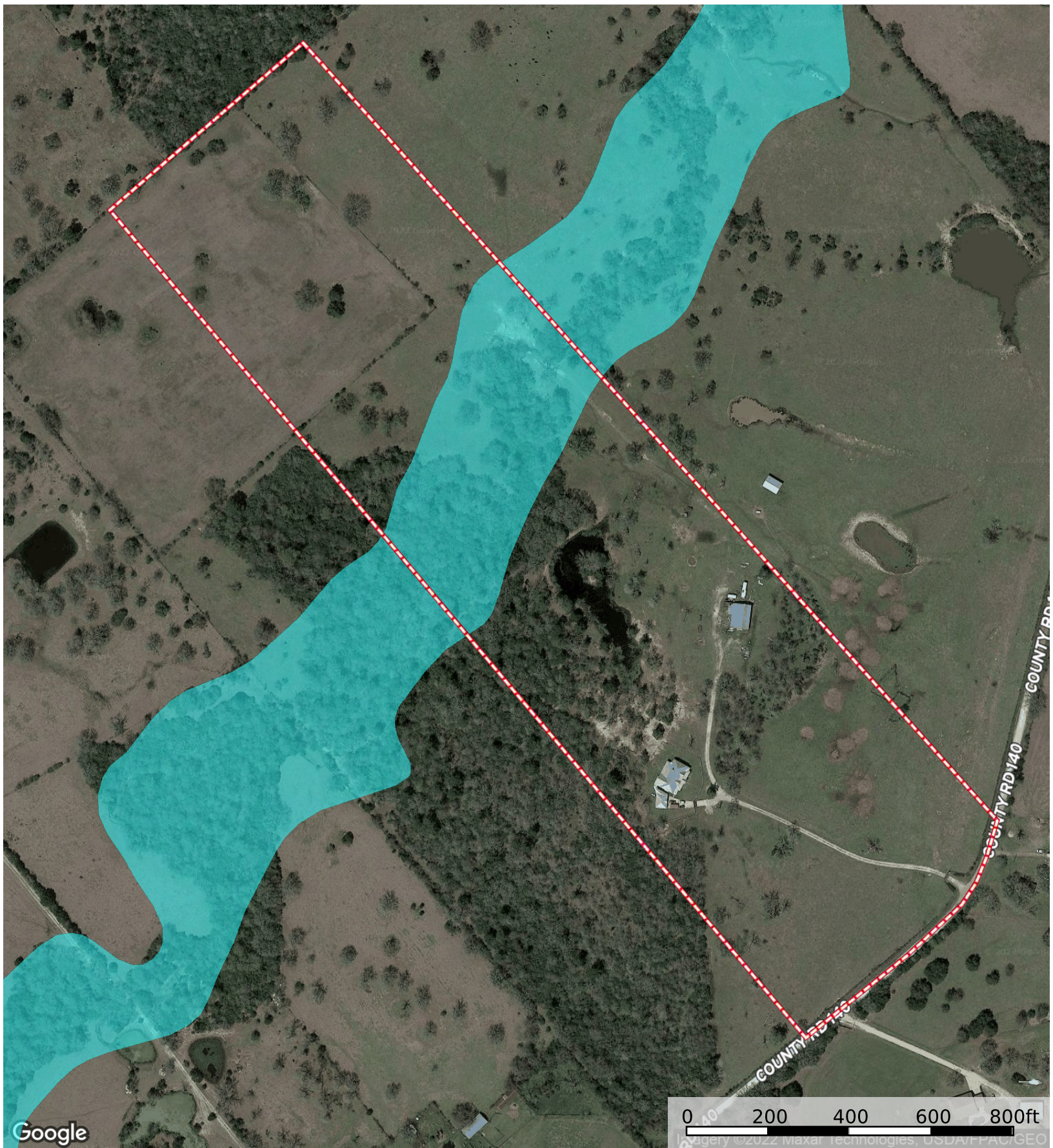


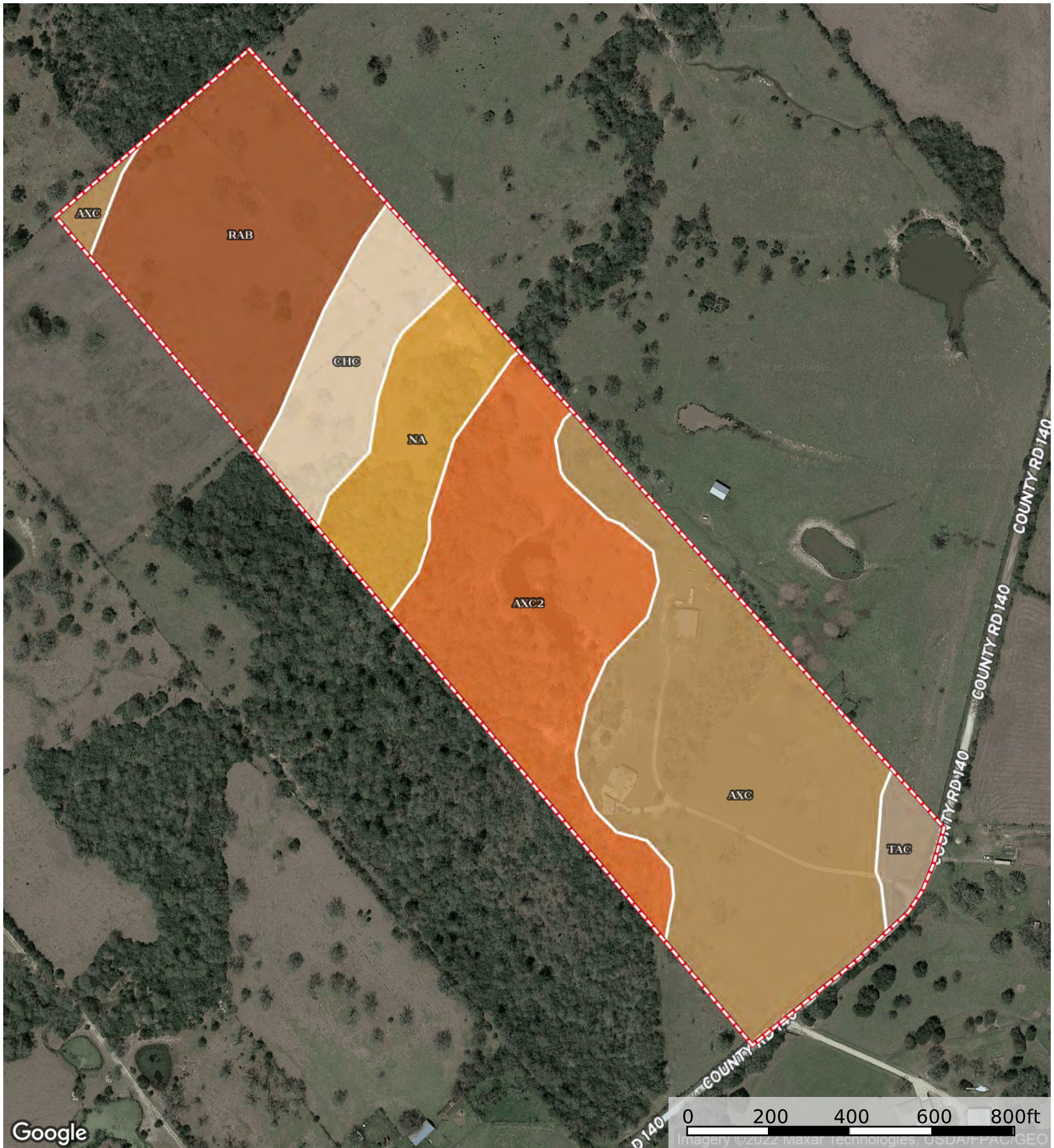
Google

40 . 5+/- Acres



40.5 +/- Acres





40.5 +/- Acres

| 40.5+/- Acres 40.51 ac

SOIL CODE	SOIL DESCRIPTION	ACRES	%	CPI	NCCPI	CAP
AxC	Axtell fine sandy loam, 1 to 5 percent slopes	14.06	34.71	0	55	4e
AxC2	Axtell fine sandy loam, 2 to 5 percent slopes, moderately eroded	9.44	23.3	0	51	4e
RaB	Rader fine sandy loam, 1 to 3 percent slopes	8.8	21.72	0	58	3s
Na	Nahatche clay loam, frequently flooded	3.84	9.48	0	40	5w
ChC	Chazos loamy fine sand, 1 to 5 percent slopes	3.47	8.57	0	55	3e
TaC	Tabor fine sandy loam, 1 to 5 percent slopes	0.9	2.22	0	39	4e
TOTALS		40.51(*)	100%	-	52.94	3.79

(*) Total acres may differ in the second decimal compared to the sum of each acreage soil. This is due to a round error because we only show the acres of each soil with two decimal.

