

Accurate
Surveys of
Texas Inc.

591 MONTGOMERY BLVD SUITE A-6
HOUSTON, TEXAS 77002
TEL: (713) 863-6969
FAX: (713) 864-4266

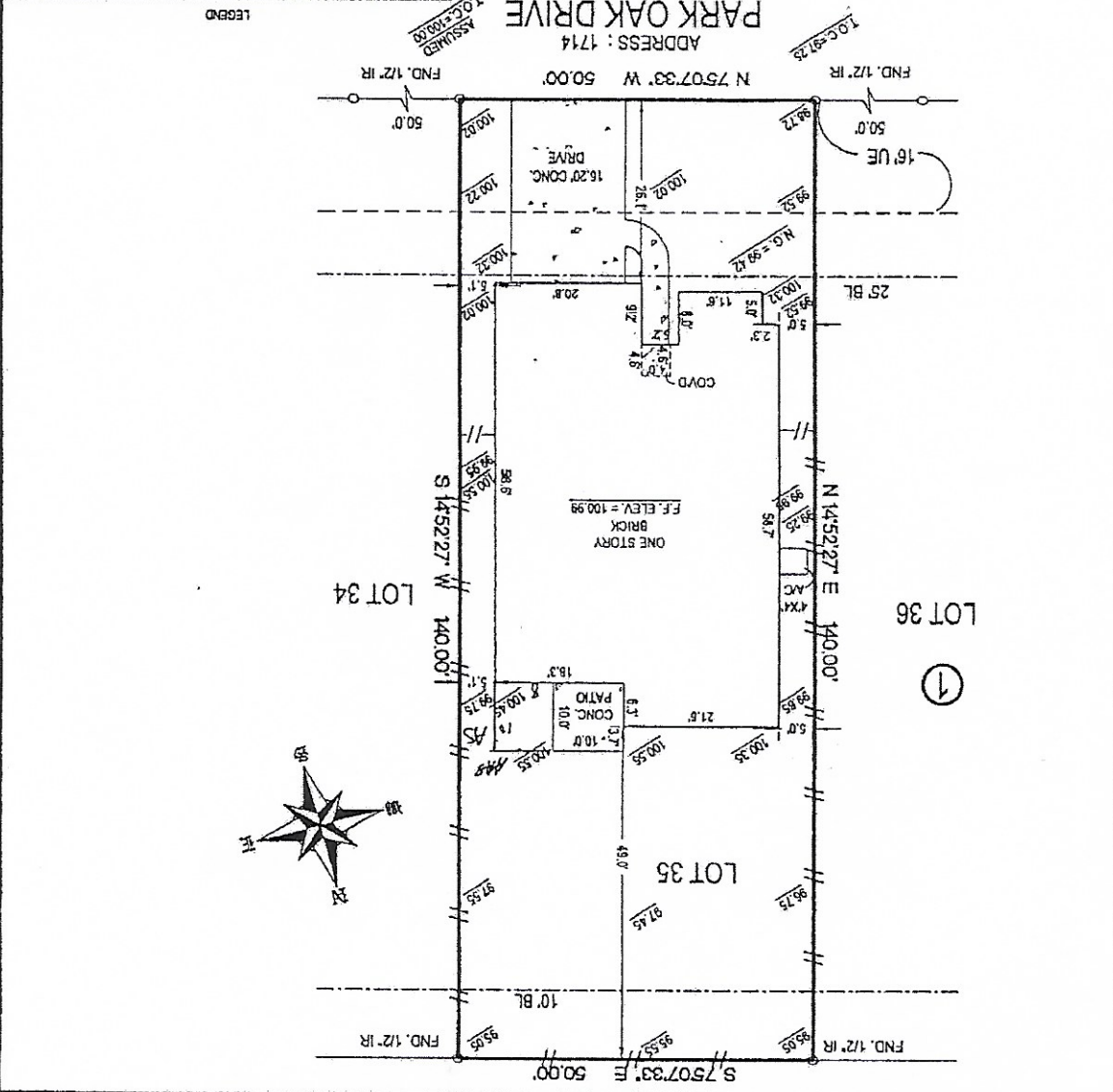


Daniel W. Goodale
R.F.L.S. No. 4919

REVISION #	REVISION DESCRIPTION
1	AS-BUILT
2	REVISION DESCRIPTION
3	REVISION DESCRIPTION
4	REVISION DESCRIPTION
5	REVISION DESCRIPTION
6	REVISION DESCRIPTION
7	REVISION DESCRIPTION
8	REVISION DESCRIPTION
9	REVISION DESCRIPTION
10	REVISION DESCRIPTION
11	REVISION DESCRIPTION
12	REVISION DESCRIPTION
13	REVISION DESCRIPTION
14	REVISION DESCRIPTION
15	REVISION DESCRIPTION
16	REVISION DESCRIPTION
17	REVISION DESCRIPTION
18	REVISION DESCRIPTION
19	REVISION DESCRIPTION
20	REVISION DESCRIPTION
21	REVISION DESCRIPTION
22	REVISION DESCRIPTION
23	REVISION DESCRIPTION
24	REVISION DESCRIPTION
25	REVISION DESCRIPTION
26	REVISION DESCRIPTION
27	REVISION DESCRIPTION
28	REVISION DESCRIPTION
29	REVISION DESCRIPTION
30	REVISION DESCRIPTION
31	REVISION DESCRIPTION
32	REVISION DESCRIPTION
33	REVISION DESCRIPTION
34	REVISION DESCRIPTION
35	REVISION DESCRIPTION
36	REVISION DESCRIPTION
37	REVISION DESCRIPTION
38	REVISION DESCRIPTION
39	REVISION DESCRIPTION
40	REVISION DESCRIPTION
41	REVISION DESCRIPTION
42	REVISION DESCRIPTION
43	REVISION DESCRIPTION
44	REVISION DESCRIPTION
45	REVISION DESCRIPTION
46	REVISION DESCRIPTION
47	REVISION DESCRIPTION
48	REVISION DESCRIPTION
49	REVISION DESCRIPTION
50	REVISION DESCRIPTION

LOT	35	SECTION	1
BLOCK	1	SUBMISSION	FINAL PLAT OF THE PARK AT WHITE OAK
COUNTY	TEXAS	RECORDATION	ADDRESS
STATE	TEXAS	RECORDATION	ADDRESS
MONTGOMERY	CABINET Z SHEET, 398-399, M.C.M.R.	RECORDATION	ADDRESS
PURCHASER	AARON A SAUER AND AMY T SAUER	RECORDATION	ADDRESS
PURCHASER	AARON A SAUER AND AMY T SAUER	RECORDATION	ADDRESS

NOTE: 1) SUBJECT TO RESTRICTIVE COVENANTS SET OUT IN CABINET Z SHEET 398 OF THE MAP RECORDS OF MONTGOMERY COUNTY, TEXAS AND COUNTY CLERK'S FILE NO. 20085444 OF THE OFFICIAL PUBLIC RECORDS OF MONTGOMERY COUNTY, TEXAS. 2) SUBJECT TO STORM WATER DRAINAGE AGREEMENT RECORDED UNDER COUNTY CLERK'S FILE NO. 2002-041981 OF THE OFFICIAL PUBLIC RECORDS OF MONTGOMERY COUNTY, TEXAS. 3) ALL BEARINGS SHOWN ARE REFERENCED PER RECORDED PLAT.



Legend: E = ELECTRIC EASEMENT, S = SANITARY SEWER EASEMENT, W = WATER EASEMENT, N = NATURAL UTILITY EASEMENT, etc.

The undersigned have received and reviewed
A copy of this survey.
[Signature]
Date: 5/9/15