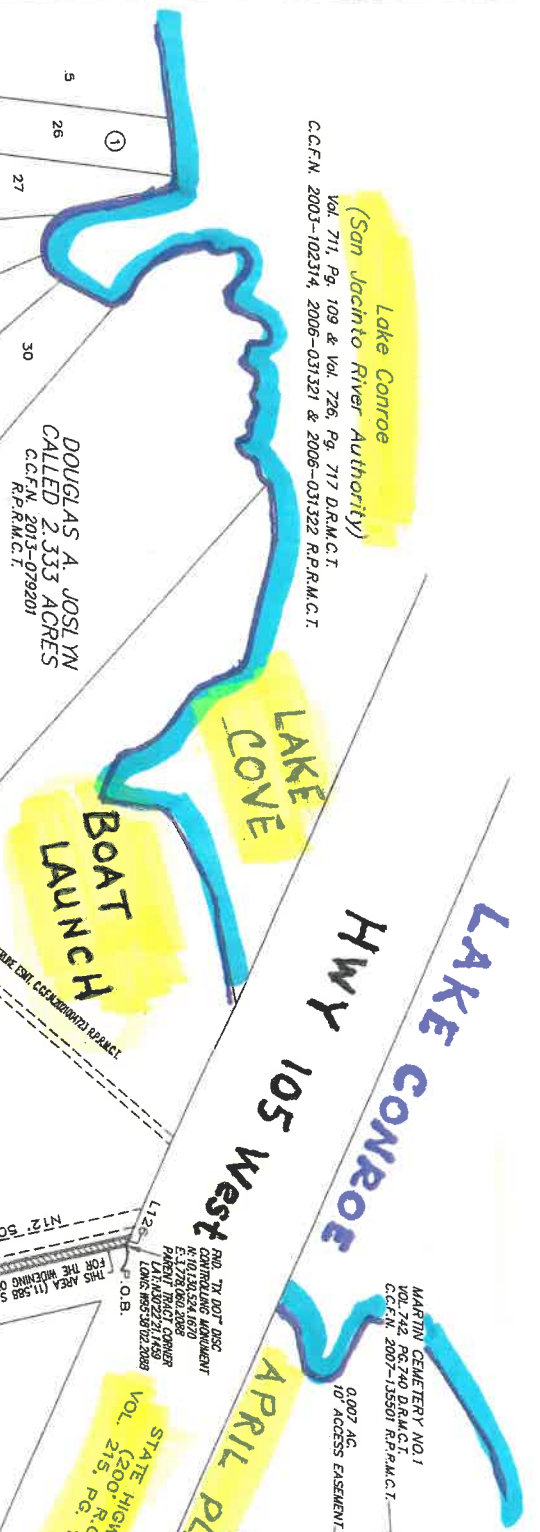


Lake Conroe
(San Jacinto River Authority)
Vol. 711, Pg. 109 & Vol. 726, Pg. 717 D.R.M.C.T.
C.C.F.N. 2003-102314, 2006-031321 & 2006-031322 R.P.R.M.C.T.



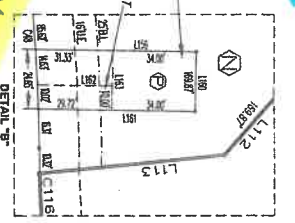
DOUGLAS A. JOSLYN
CALLED 2.333 ACRES
C.C.F.N. 2013-079201
R.P.R.M.C.T.

LAKE COVE
BOAT LAUNCH

LAKE CONROE
HWY 105 West

MARTIN CEMETERY NO. 1
0.002 AC.
10' ACCESS EASEMENT
C.C.F.N. 2007-13580 R.P.R.M.C.T.

STATE HIGHWAY 105
VOL. 215, PG. 117 D.R.M.C.T.



LAKEVIEW MARINA LTD
CALLED 8.370 ACRES
C.C.F.N. 93191223
R.P.R.M.C.T.

COMMERCIAL
CALLED 46,210 ACRES
C.C.F.N. 2018-099164
R.P.R.M.C.T.

PINE LAKE COVE
APARTMENTS

COMMERCIAL

KPS LAND INVESTMENTS
(TRACT 1)
CALLED 2.708 ACRES
C.C.F.N. 2021-015427
R.P.R.M.C.T.

KPS LAND INVESTMENTS
CALLED 1.689 ACRES
C.C.F.N. 2021-015408
R.P.R.M.C.T.

KPS LAND INVESTMENTS
(TRACT 3)
CALLED 7.484 ACRES
C.C.F.N. 2021-015427
R.P.R.M.C.T.

KPS LAND INVESTMENTS
CALLED 20.938 ACRES
C.C.F.N. 2021-015476
R.P.R.M.C.T.

MERLE V. DIXON
CALLED 10.029 ACRES
R.P.R.M.C.T.

10 AC
FOR SALE
MERLE V. DIXON
CALLED 10.029 ACRES
C.C.F.N. 2001-075414
R.P.R.M.C.T.

Charles R. & Renee S. Horton
CALLED 9.053 Acres
C.C.F.N. 9847367
R.P.R.M.C.T.

Charles R. & Renee S. Horton
CALLED 9.053 Acres
C.C.F.N. 9847367
R.P.R.M.C.T.

KDL VENTURES, LLC
RESIDUAL OF
CALLED 39.98 ACRES
C.C.F.N. 2016-099759
R.P.R.M.C.T.

WEDDING
VENUE

SET 5/8" I.R.
N: 10,127,202,2588
E: 3,776,698,2488
LAT: N30° 21' 48.8620
LONG: W95° 38' 19.6187

Charles Horton
CHARLES HORTON
Broker
936.520.1420
www.arrowheartrealty.com
charles@arrowheartrealty.com
550 S Pine Lake Rd
Montgomery TX 77316