



Everything's IncludedSM Homes

The Liberty

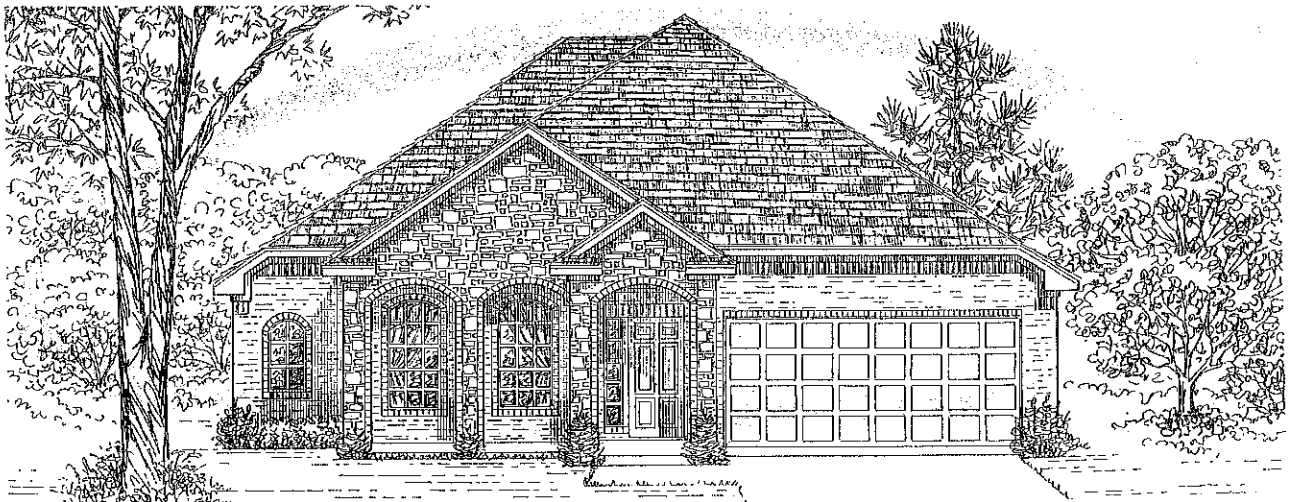
2130 sq. ft.



Elevation A



Elevation C



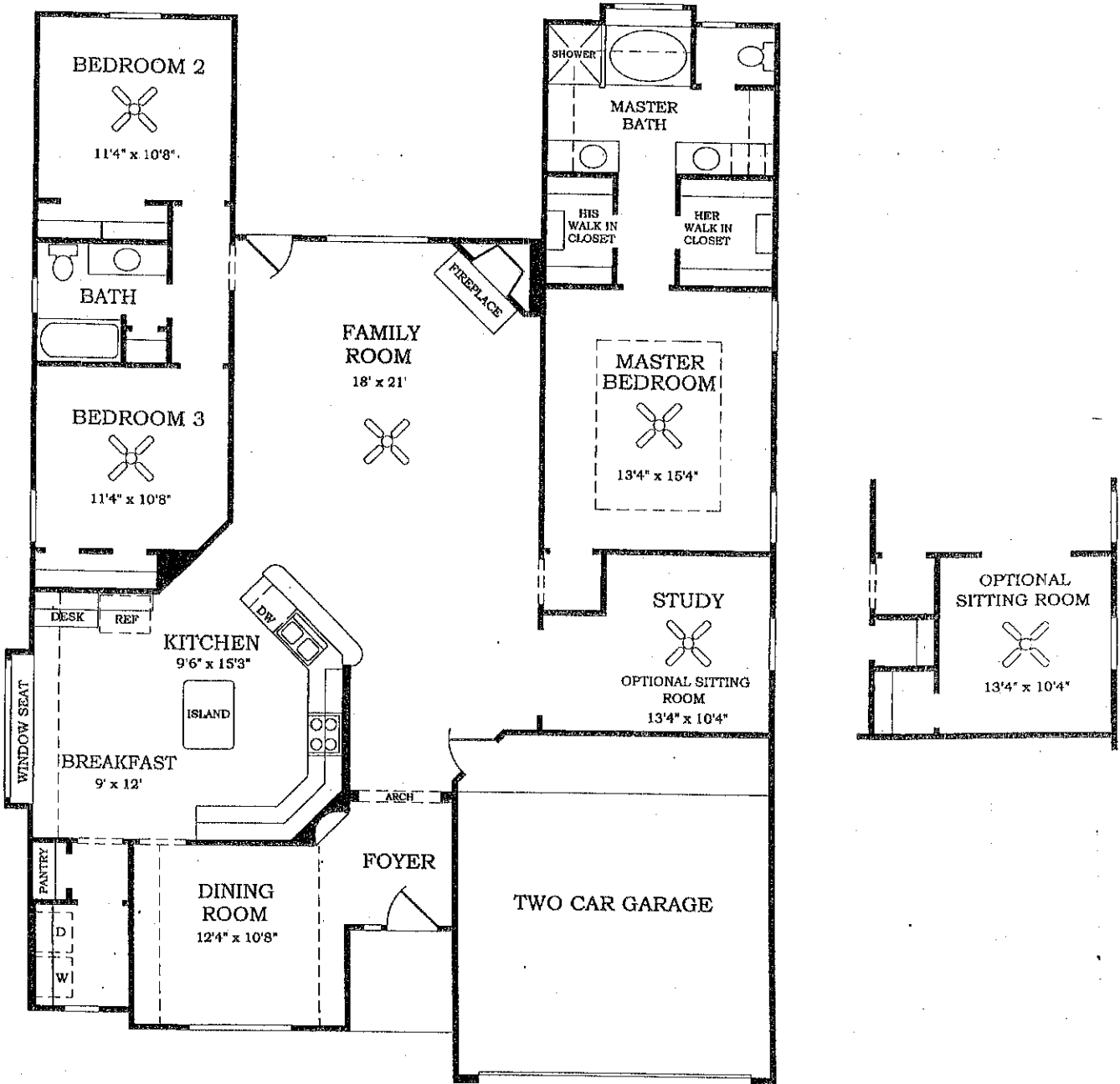
Elevation F



Everything's IncludedSM Homes

The Liberty

2130 sq. ft.



9/04

The specific features in a home may vary from home to home and from one community to another. We reserve the right to substitute equipment, materials, appliances and brand names with items of equal or higher, in our sole opinion, value. Square footages are approximate. Color and size variations may occur. The prices of our homes, included features, and available locations are subject to change without notice. Please see the actual home purchase agreement for additional information, disclosures, and disclaimers relating to the home and its features. Void where prohibited by law.



550 Greens Parkway, Suite 200
Houston, TX 77067
www.lennar.com
©2005 Lennar Inc.





SIGNATURE COLLECTION In Eagle Springs

Chad Barham New Home Consultant
www.cbarham10@yahoo.com

18411 Wide Brim Court Humble, TX 77346 Office (832) 445-0071 Fax (832) 445-0073
Mobile: 281 772- 8350

ONE STORY HOMES

Model Name	Sq. Ft.	Price	Stone Elevation
The Hillshire (Model 4260)	1946 Sq. Ft. 3/2 open concept one story, with large rooms, covered patio.	\$161,990	\$165,990
The Cameron (Model 4310)	2004 Sq. Ft. 3/2 formal dining room, large family room, study off master suite, two car attached garage.	\$161,990	\$165,990
The Liberty (Model 4150)	2130 Sq. Ft. 3+study/2/2, formal dining, large family room w/corner fireplace, island kitchen w/breakfast area.	\$167,990	\$171,990
The San Benito (Model Home) (Model 4240)	2254 Sq. Ft. 4/2/2, kitchen w/counter bar open to large family room with a corner fireplace, master bedroom with sitting area in rear, covered rear patio.	\$171,990	\$175,990

TWO STORY HOMES

The Edinburg (Model 4170)	2271 Sq. Ft. 3/2 1/2, formal dining room, large family room, master suite down, game room up.	\$169,990	\$173,990
The Arlington (Model 4250)	2650 Sq. Ft. 4/2 1/2/2+study, two story foyer, large family room with a corner fireplace, all bedrooms up.	\$181,990	\$185,990
The Travis II (Model 4211)	2642 Sq. Ft. 4/3 1/2, formal dining room, open floor plan, master bedroom down, game room up.	\$185,990	\$189,990
The Wimberly (Model 4300)	2726 Sq. Ft. 4/2 1/2, large family room with corner fireplace, formal dining room, master suite with large walk in closet, gameroom, and covered rear patio	\$183,990	\$187,990
The McAllen II (Model 4271)	2723 Sq. Ft. 4/2, kitchen w/counter bar open to large family room with a corner fireplace, master bedroom with sitting area in rear, covered rear patio, large game room up.	\$187,990	\$191,990
The Fredericksburg (Model #4230)	2999 Sq. Ft. 4/2 1/2, corner entry leads to large two story family room with a corner fireplace, master bedroom down, 3 bedrooms, game room upstairs, and option room.	\$195,990	\$199,990

Prices and Floor Plans subject to change without notice.
Square footage reflects living area & should be considered approximate.
Prices Effective May 2, 2005.



Everything's Included® Homes

Signature Collection Features

Interior:

- Security system with 1 keypad
- Mini-blinds on all operable windows
- Colonist raised panel interior doors
- Fireplace with gas log lighter, ceramic tile surround and mantle
- Ceramic tile flooring in foyer
- Multi-speed ceiling fan with light kit in all bedrooms, family room, game room & study/sitting room
- Rounded sheetrock corners (per plan)
- 1/2" Rebond carpet pad
- 100% nylon "Stain Relief" carpeting with a five year wear guarantee
- White "Divided Light" style windows on front of home
- Folding stair access to attic
- Pre-wired for telephones in kitchen, game room, study/sitting room and all bedrooms
- Pre-wired for cable television outlets in all bedrooms, game room, study/sitting room and family room (where applicable)
- Crown molding in study, dining room, master bedroom and foyer (per plan)
- Brushed chrome interior door hardware
- Smoke detectors
- Suspended light fixture in dining room with dimmer
- Interior electric breaker box
- Fluorescent lighting in garage

Laundry Room:

- Large capacity heavy duty GE® 7-cycle washer
- Heavy duty GE® 3-cycle electric dryer with 3 temperatures
- Ceramic tile floor
- Convenient shelving for storage
- Fluorescent lighting

Powder Bath:

- Porcelain pedestal sink
- Ceramic tile floor
- Polished chrome hardware
- Designer mirror

Master Bath:

- 42x60 oval garden tub with therapeutic jets
- Møen® washerless faucets
- Glass block window
- Ceramic tile flooring
- Separate shower with cultured marble walls
- Cultured marble vanity tops
- Mirrored medicine cabinet
- Posi-temp shower valves
- Air conditioned walk-in closet with fluorescent lighting

Secondary Bath:

- Ceramic tile flooring
- Ceramic tile shower walls
- Cultured marble vanity tops
- Polished chrome Møen® washerless faucets
- Mirrored medicine cabinet
- Posi-temp shower valves

Kitchen:

- Complete GE® appliance package:
 - Microwave oven vented to exterior
 - 22 cu. ft. refrigerator with ice maker
 - Self-cleaning electric oven
 - Multi-cycle dishwasher
- Recessed ceiling lighting
- Ceramic tile flooring in kitchen/breakfast area
- Stainless steel sink with designer faucet
- 42" upper cabinets
- Garbage disposal
- Gas line to range