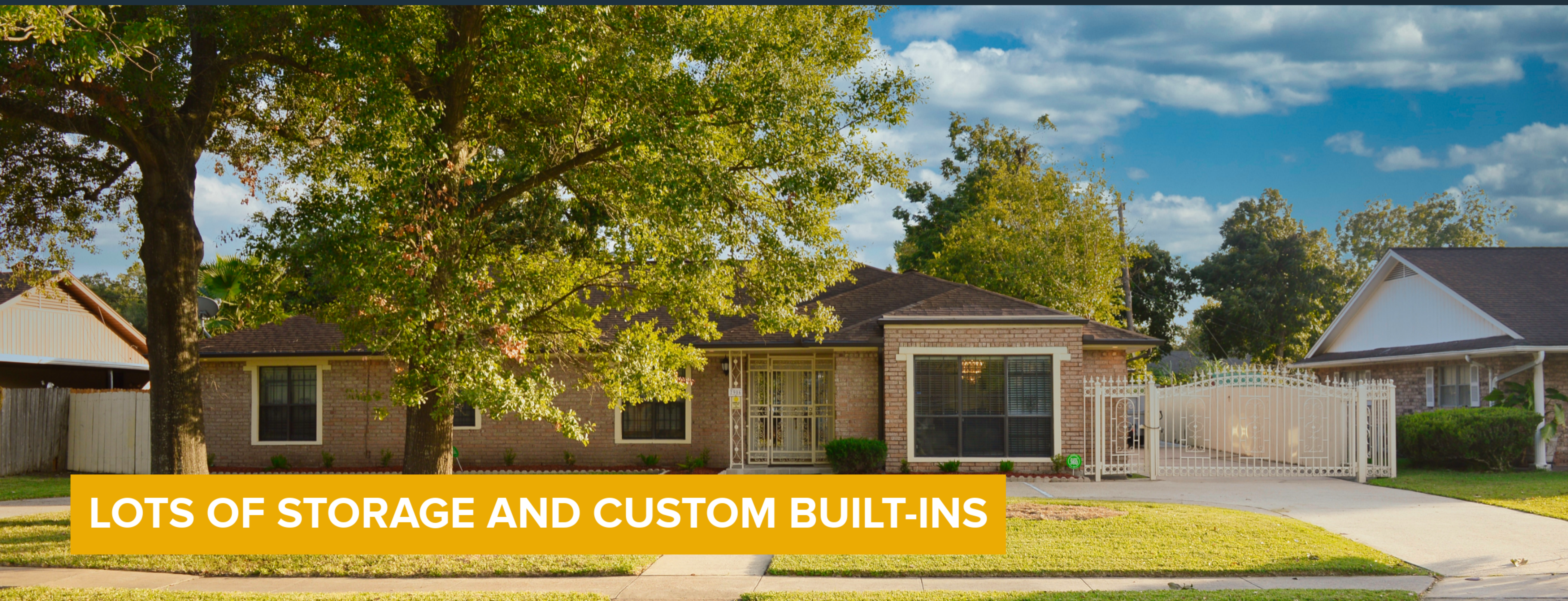


7906 BELLFORT STREET, HOUSTON, TX 77061

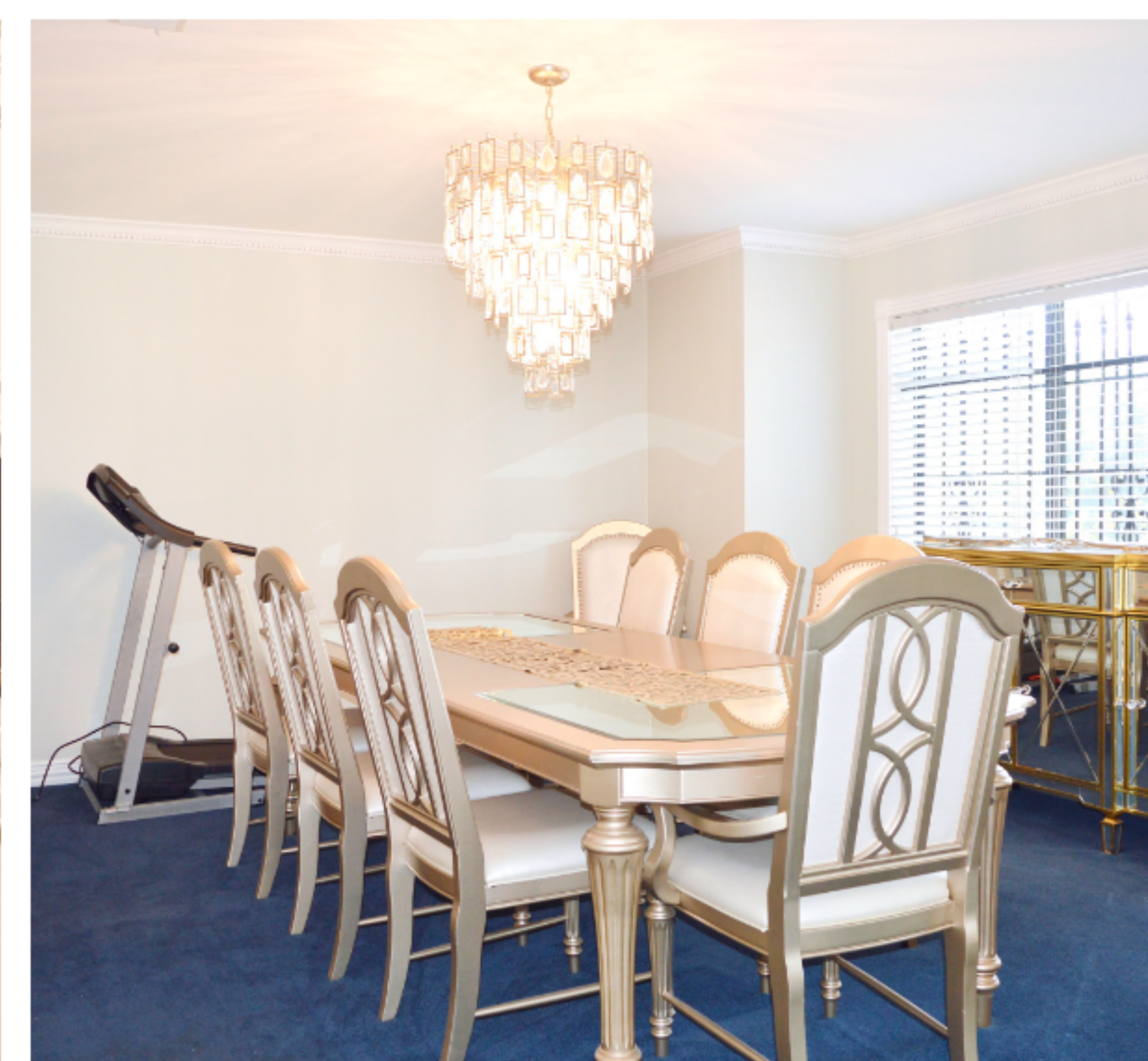
3 BD | 2 BA | 2,398 SQ. FT | 0.25 ACRE LOT



LOTS OF STORAGE AND CUSTOM BUILT-INS

ABOUT THIS PROPERTY

Great location!! You can be close to everything with this house if you hurry!! This fabulous home comes with extra parking with a circle driveway and an oversized car garage. You can enjoy a front yard with incredible curb appeal and a fully fenced backyard. Inside the house, you can find lots of storage, all walk-in closets, including the kitchen pantry, and lots of built-ins and crown molding around the house. 3 Beds and 2 Baths with Formal Dining and Formal Living. Don't miss any memories in the spacious kitchen with lots of counter space, stain-steel appliances, and a double oven. **COME MAKE IT YOURS BEFORE SOMEONE ELSE DOES!**



2,398
SQ. FT.

0.25
ACRE LOT



JOSEPH LANDES

Directed Realty

LIC# 605143

m: (832) 559-0527 | o: (281) 962-4082

e: transactions@directedrealty.com

w: www.directedrealty.com



2526 Harlequin Ct, League City, TX 77573

7906 BELLFORT STREET, HOUSTON, TX 77061

3 BD | 2 BA | 2,398 SQ. FT | 0.25 ACRE LOT



JOSEPH LANDES

m: (832) 559-0527 | o: (281) 962-4082
e: transactions@directedrealty.com
w: www.directedrealty.com



VERY CONVENIENT

This home is in a **very convenient** area. Some errands in this location require a car and most major services are within 1 mile.

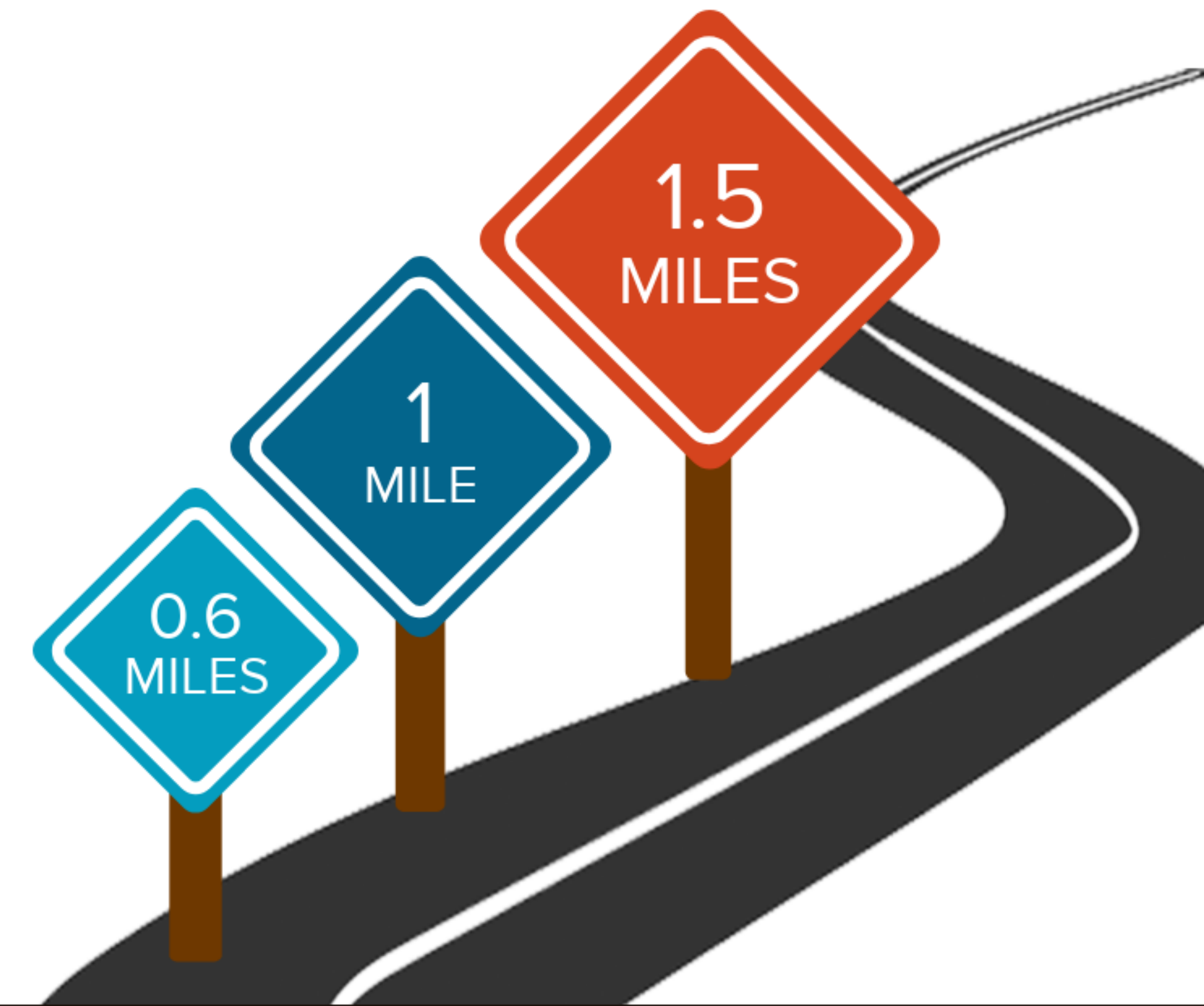
- PHARMACY 0.1 MI
- GAS 0.1 MI
- CLEANERS 0.1 MI
- GROCERIES 0.2 MI
- ATM 0.2 MI
- MEDICAL 0.3 MI
- COFFEE 0.8 MI
- GYM 1.3 MI
- MOVIE THEATER 3.4 MI



SCHOOLS IN YOUR AREA

The assigned schools are **average** for the area. There are also 31 private schools and 14 charter schools within 5 miles.

- 4 RATING** 1-5 LEWIS ELEMENTARY SCHOOL ASSIGNED
- 4 RATING** 6-8 ORTIZ MIDDLE SCHOOL ASSIGNED
- 2 RATING** 9-12 CHAVEZ HIGH SCHOOL ASSIGNED



THE GREAT OUTDOORS

This home is located near a variety of outdoor activities.

POPULAR

- HIKING HTXOUTDOORS (3.7 MILES)
- PARK SMITHER PARK (4.3 MILES)
- GOLF COURSE GUS WORTHAM PARK GOLF COURSE (4.5 MILES)
- DOG PARK MARKET SQUARE PARK (8.2 MILES)



NEIGHBORHOOD EATS

This home is located near 87 moderately priced restaurants and has an **average** variety of cuisines.

BY CATEGORY

MEXICAN	27	SEAFOOD	5
AMERICAN	20	BARBECUE	3
FAST FOOD	20	FOOD TRUCKS	2
ASIAN	7	BAKERIES	1
PIZZA	6	OTHER	5

