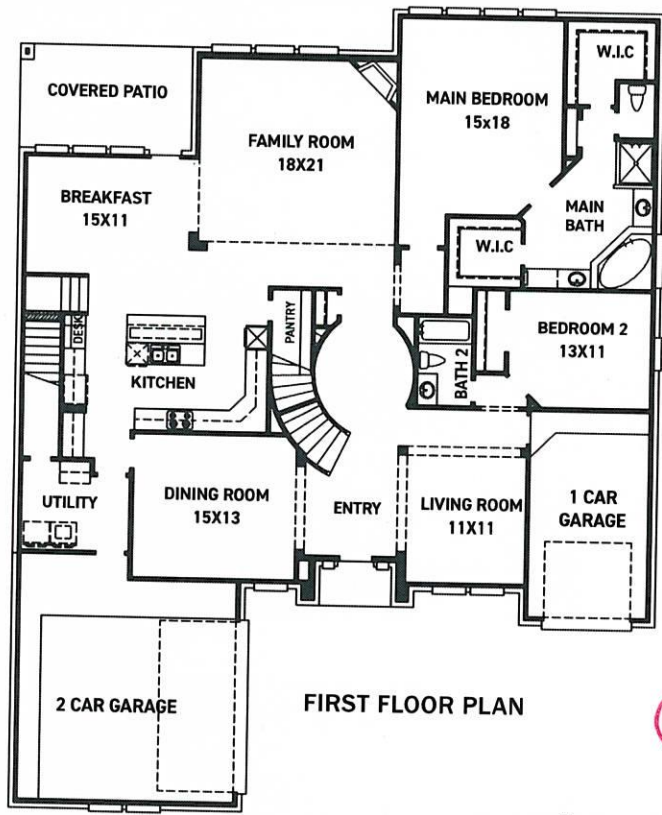


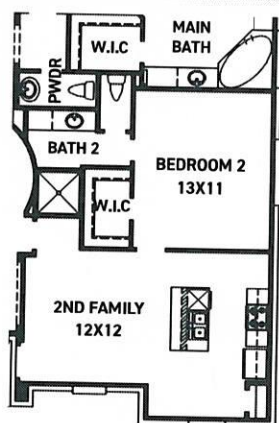


18134 BACHMAN BRANCH

San Sebastian



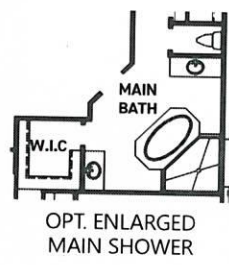
FIRST FLOOR PLAN



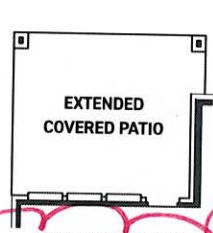
OPT. DUAL HOME



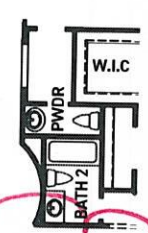
OPT. LIVING QUARTERS



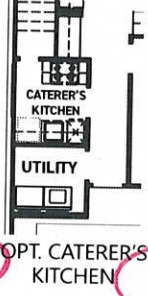
OPT. ENLARGED MAIN SHOWER



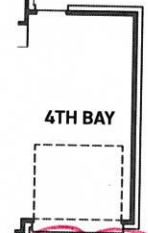
OPT. EXTENDED COVERED PATIO



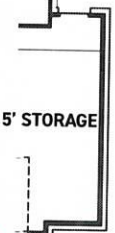
OPT. POWDER



OPT. CATERER'S KITCHEN

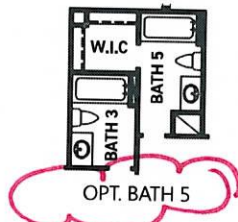


OPT. 4TH BAY

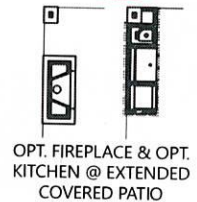


OPT. 5FT STORAGE

- FEATURES:**
- 4,227 SQUARE FT.
 - 5 BEDROOM
 - 4 BATHROOM
 - 3 CAR GARAGE



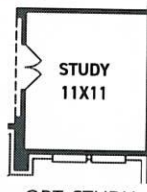
OPT. BATH 5



OPT. FIREPLACE & OPT. KITCHEN @ EXTENDED COVERED PATIO



OPT. MAIN BEDROOM BAY



OPT. STUDY @ LIVING



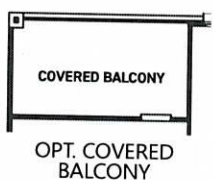
OPT. EXTENDED COVERED BALCONY



OPT. BEDROOM 8 @ LIVING



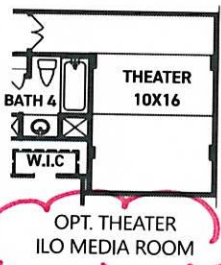
OPT. BEDROOM 7 @ 1 CAR GARAGE



OPT. COVERED BALCONY



OPT. BEDROOM 6 ILO MEDIA ROOM



OPT. THEATER ILO MEDIA ROOM



SECOND FLOOR PLAN

REV 6/21 (7014)



These drawings are conceptual only and are for the convenience of reference. They should not be relied upon as representations, express or implied, of the final detail of the residences. The builder expressly reserves the right to make modifications, revisions, and changes it deems desirable in its sole and absolute discretion. Dimensions and square footages are approximate and may vary with actual construction.



newmarkhomes.com



18134 BACHMAN BRANCH San Sebastian



ELEVATION 1



ELEVATION 3



ELEVATION 4



ELEVATION 5



ELEVATION 6



ELEVATION 7

REV 6/21 (7014)



These drawings are conceptual only and are for the convenience of reference. They should not be relied upon as representations, express or implied, of the final detail of the residences. The builder expressly reserves the right to make modifications, revisions, and changes it deems desirable in its sole and absolute discretion. Dimensions and square footages are approximate and may vary with actual construction.



newmarkhomes.com